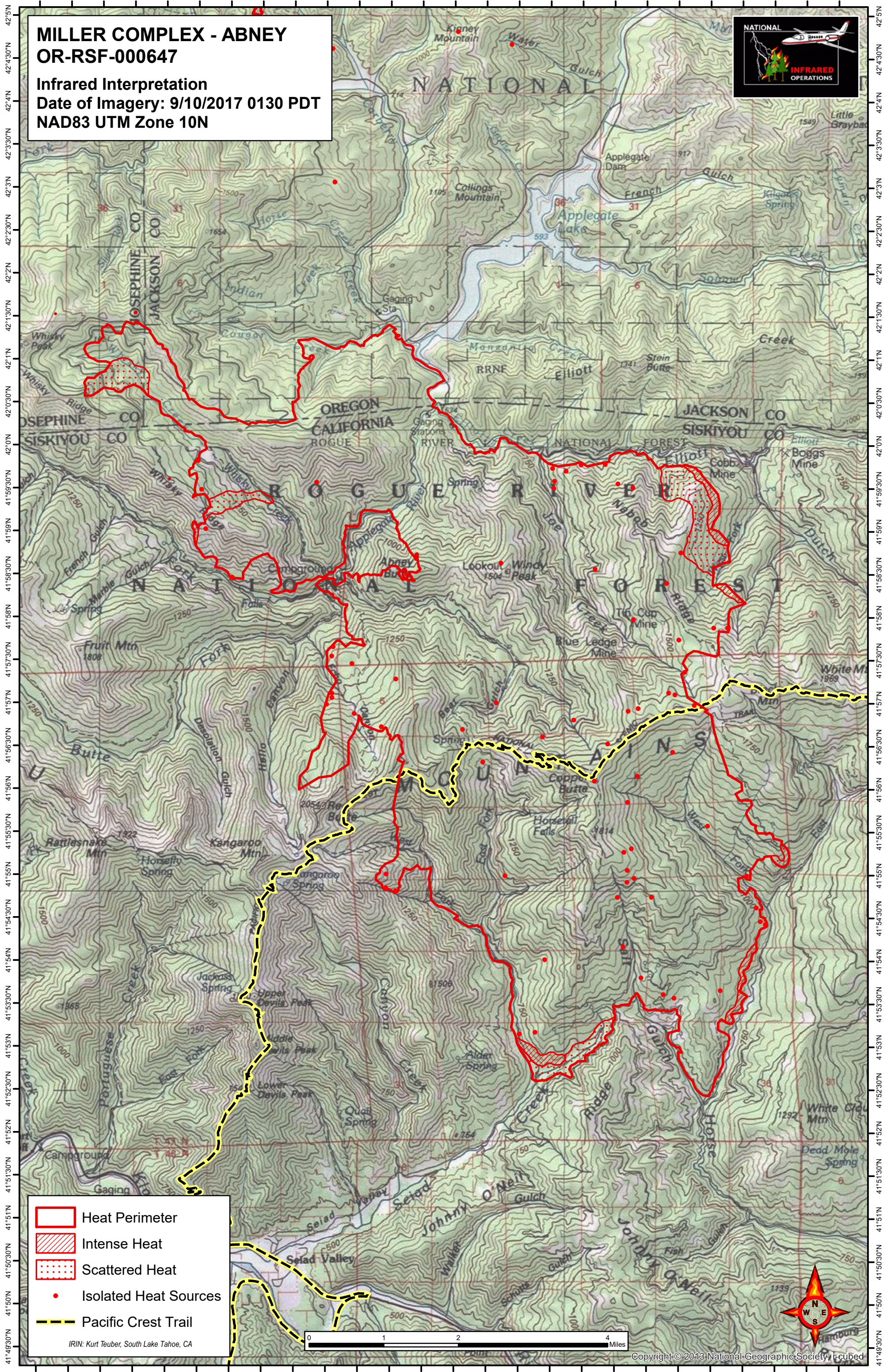







MILLER COMPLEX - ABNEY
OR-RSF-000647
 Infrared Interpretation
 Date of Imagery: 9/10/2017 0130 PDT
 NAD83 UTM Zone 10N



-  Heat Perimeter
-  Intense Heat
-  Scattered Heat
-  Isolated Heat Sources
-  Pacific Crest Trail

IRIN: Kurt Teuber, South Lake Tahoe, CA

