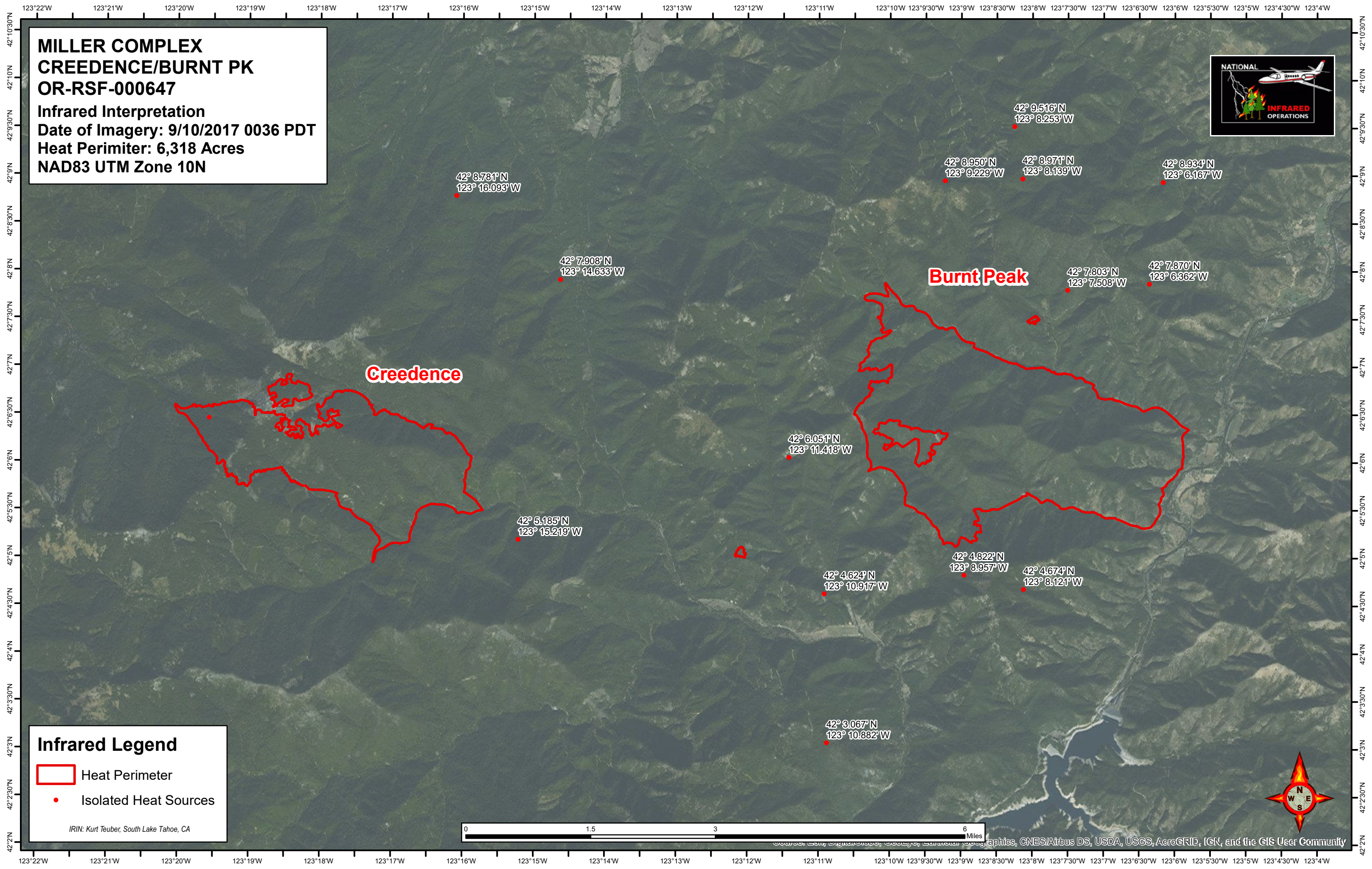


**MILLER COMPLEX
 CREEDENCE/BURNT PK
 OR-RSF-000647**
 Infrared Interpretation
 Date of Imagery: 9/10/2017 0036 PDT
 Heat Perimeter: 6,318 Acres
 NAD83 UTM Zone 10N



Creedence

Burnt Peak

42° 8.781' N
 123° 16.093' W

42° 7.908' N
 123° 14.633' W

42° 9.516' N
 123° 8.253' W

42° 8.950' N
 123° 9.229' W

42° 8.971' N
 123° 8.139' W

42° 8.934' N
 123° 6.167' W

42° 7.803' N
 123° 7.508' W

42° 7.870' N
 123° 6.362' W

42° 6.051' N
 123° 11.418' W

42° 5.185' N
 123° 15.219' W



42° 4.624' N
 123° 10.917' W

42° 4.822' N
 123° 8.957' W

42° 4.674' N
 123° 8.121' W

42° 3.067' N
 123° 10.882' W

Infrared Legend

-  Heat Perimeter
-  Isolated Heat Sources

IRIN: Kurt Teuber, South Lake Tahoe, CA

