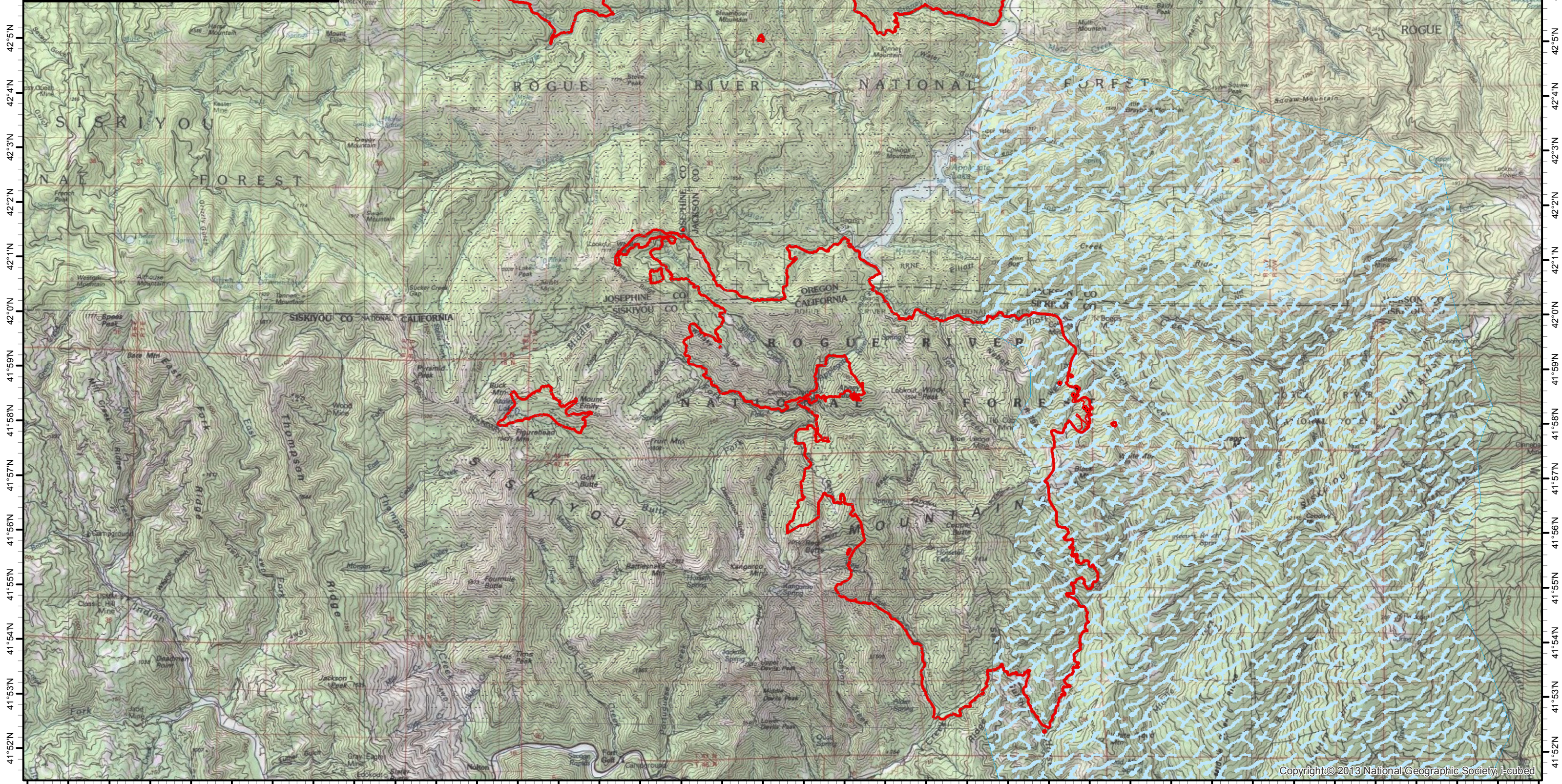


123°30'W 123°28'W 123°26'W 123°24'W 123°22'W 123°20'W 123°18'W 123°16'W 123°14'W 123°12'W 123°10'W 123°9'W 123°8'W 123°7'W 123°6'W 123°5'W 123°4'W 123°3'W 123°2'W 123°1'W 123°0'W 122°59'W 122°57'W 122°55'W 122°53'W

**Miller Complex Infrared Map** ● Isolated Heat Sources  
**OR-RSF-000647** ■ Heat Perimeter  
**Map Date: 9/19/2017** ▨ Intense Heat  
**Imagery Date: 09/18/2017** ○ Scattered Heat  
**Imagery Time: 2055 MDT** □ Previous Heat Perimeter  
**IR Interpreted Acres: 36,279** ☐ No Scan Coverage  
**IRIN: Tina Rotenbury** ☁ Clouds

NAD 1983 UTM Zone 10N  
 0 0.250.5 1 1.5 2 2.5 3 3.5 Miles



123°30'W 123°28'W 123°26'W 123°24'W 123°22'W 123°20'W 123°18'W 123°16'W 123°14'W 123°12'W 123°10'W 123°9'W 123°8'W 123°7'W 123°6'W 123°5'W 123°4'W 123°3'W 123°2'W 123°1'W 123°0'W 122°59'W 122°57'W 122°55'W 122°53'W