

123°23'W 123°22'W 123°21'W 123°20'W 123°19'W 123°18'W 123°17'W 123°16'W 123°15'W 123°14'W 123°13'W 123°12'W 123°11'W 123°10'W 123°9'W 123°8'W 123°7'W 123°6'W 123°5'W 123°4'W 123°3'W 123°2'W 123°1'W 123°0'W

Miller Fire Complex

OR-RSF-000647

Heat Acres: 32,432

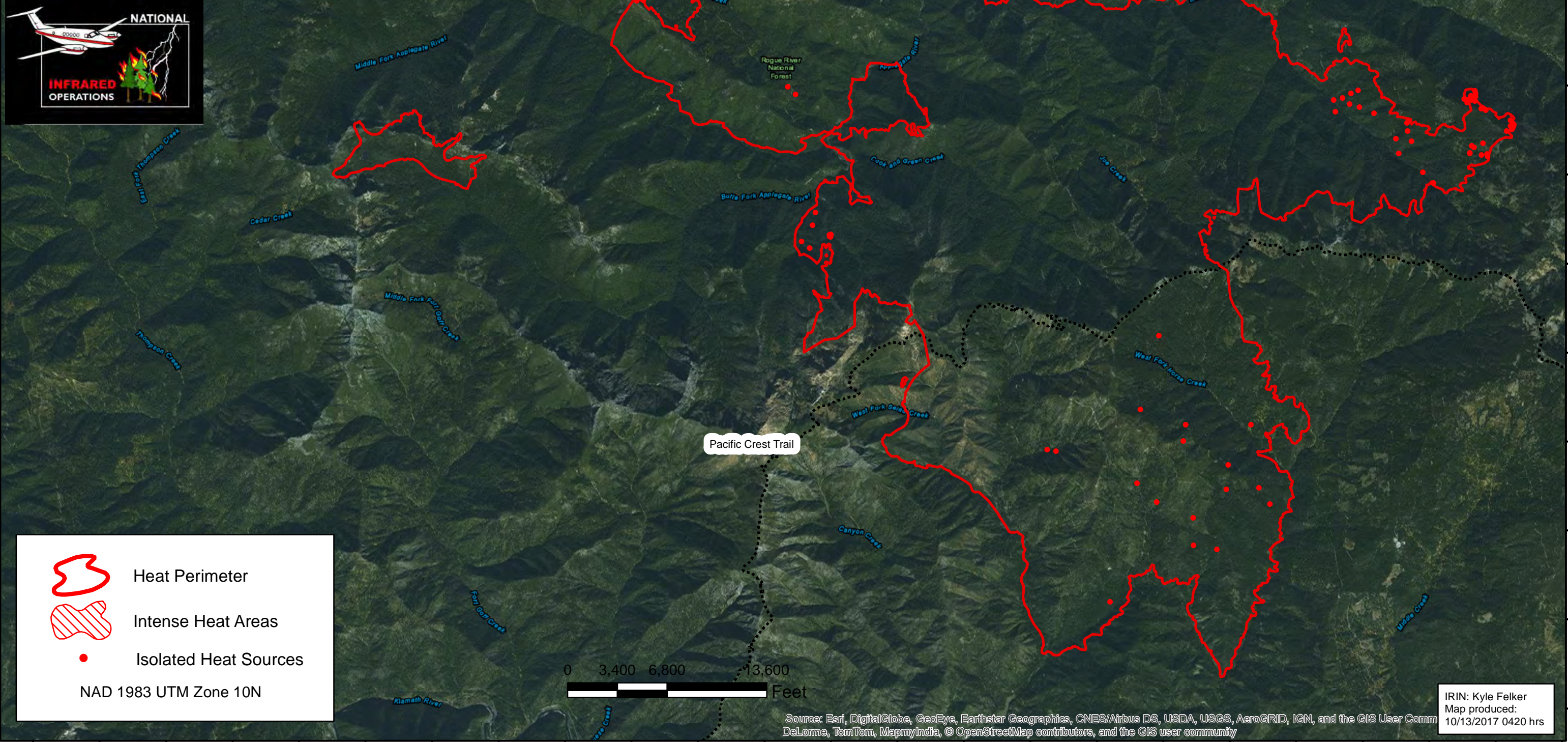
Infrared Interpretation




Imagery Date:
2017/10/13 0054 Hrs

Clouds present but able to get a read on the 2 areas of perimeter increase from yesterday. Else ware was hit and miss cloudy cover.



1:80,000



-  Heat Perimeter
-  Intense Heat Areas
-  Isolated Heat Sources

NAD 1983 UTM Zone 10N

IRIN: Kyle Felker
Map produced:
10/13/2017 0420 hrs

Source: Esri, DigitalGlobe, GeoEye, Earthstar Geographics, CNES/Airbus DS, USDA, USGS, AeroGRID, IGN, and the GIS User Community
DeLorme, TomTom, MapmyIndia, © OpenStreetMap contributors, and the GIS user community

123°23'W 123°22'W 123°21'W 123°20'W 123°19'W 123°18'W 123°17'W 123°16'W 123°15'W 123°14'W 123°13'W 123°12'W 123°11'W 123°10'W 123°9'W 123°8'W 123°7'W 123°6'W 123°5'W 123°4'W 123°3'W 123°2'W 123°1'W 123°0'W