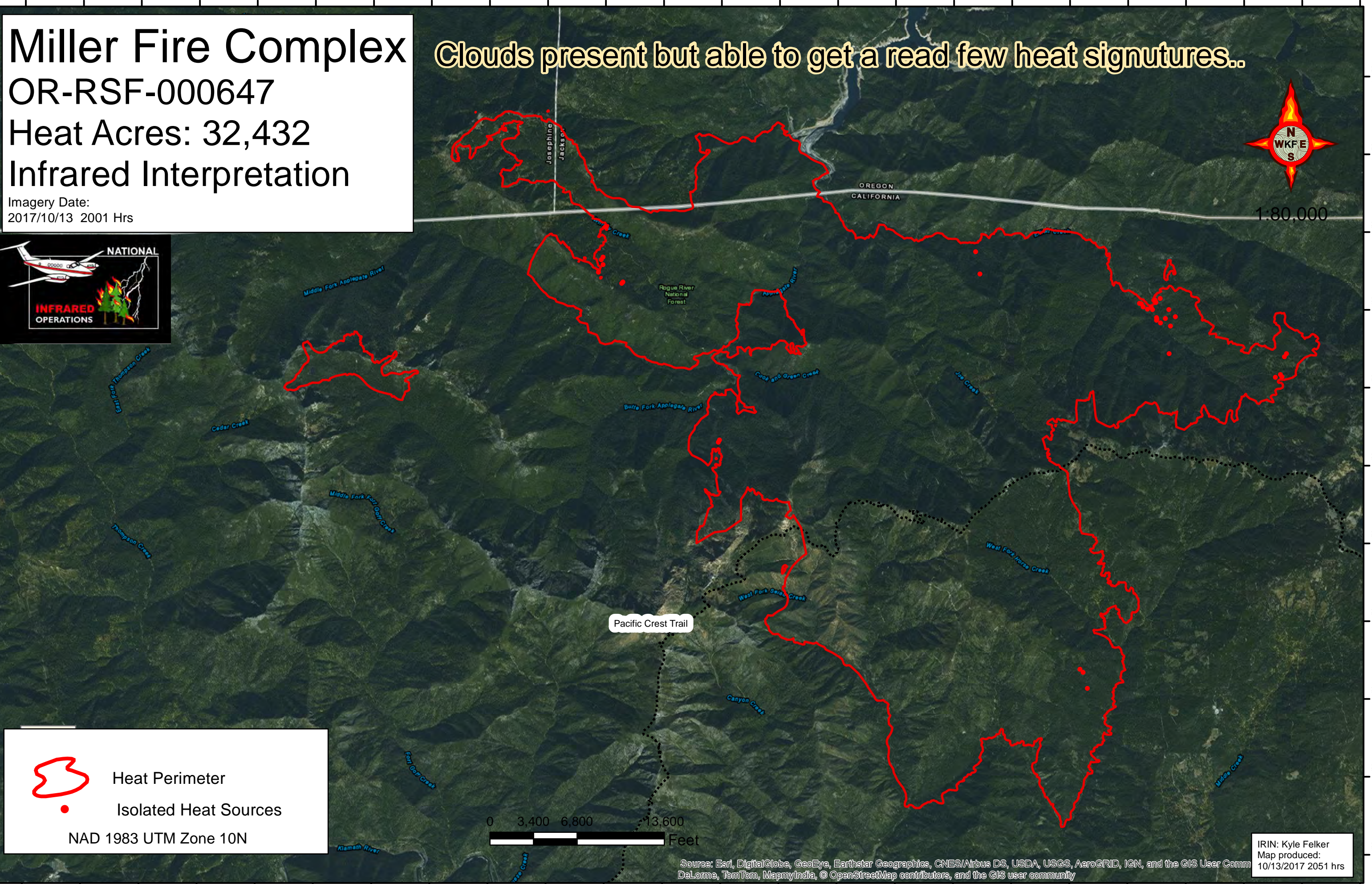




123°23'W 123°22'W 123°21'W 123°20'W 123°19'W 123°18'W 123°17'W 123°16'W 123°15'W 123°14'W 123°13'W 123°12'W 123°11'W 123°10'W 123°9'W 123°8'W 123°7'W 123°6'W 123°5'W 123°4'W 123°3'W 123°2'W 123°1'W 123°0'W

# Miller Fire Complex

OR-RSF-000647  
Heat Acres: 32,432  
Infrared Interpretation  
Imagery Date:  
2017/10/13 2001 Hrs

Clouds present but able to get a read few heat signatures..



 Heat Perimeter  
 Isolated Heat Sources  
NAD 1983 UTM Zone 10N

0 3,400 6,800 13,600 Feet

Source: Esri, DigitalGlobe, GeoEye, Earthstar Geographics, CNES/Airbus DS, USDA, USGS, AeroGRID, IGN, and the GIS User Community  
DeLorme, TomTom, MapmyIndia, © OpenStreetMap contributors, and the GIS user community

IRIN: Kyle Felker  
Map produced:  
10/13/2017 2051 hrs

123°23'W 123°22'W 123°21'W 123°20'W 123°19'W 123°18'W 123°17'W 123°16'W 123°15'W 123°14'W 123°13'W 123°12'W 123°11'W 123°10'W 123°9'W 123°8'W 123°7'W 123°6'W 123°5'W 123°4'W 123°3'W 123°2'W 123°1'W 123°0'W