

NENA SPRINGS WA-WSA-054 BRIEFING Map

Datum: North American 1983

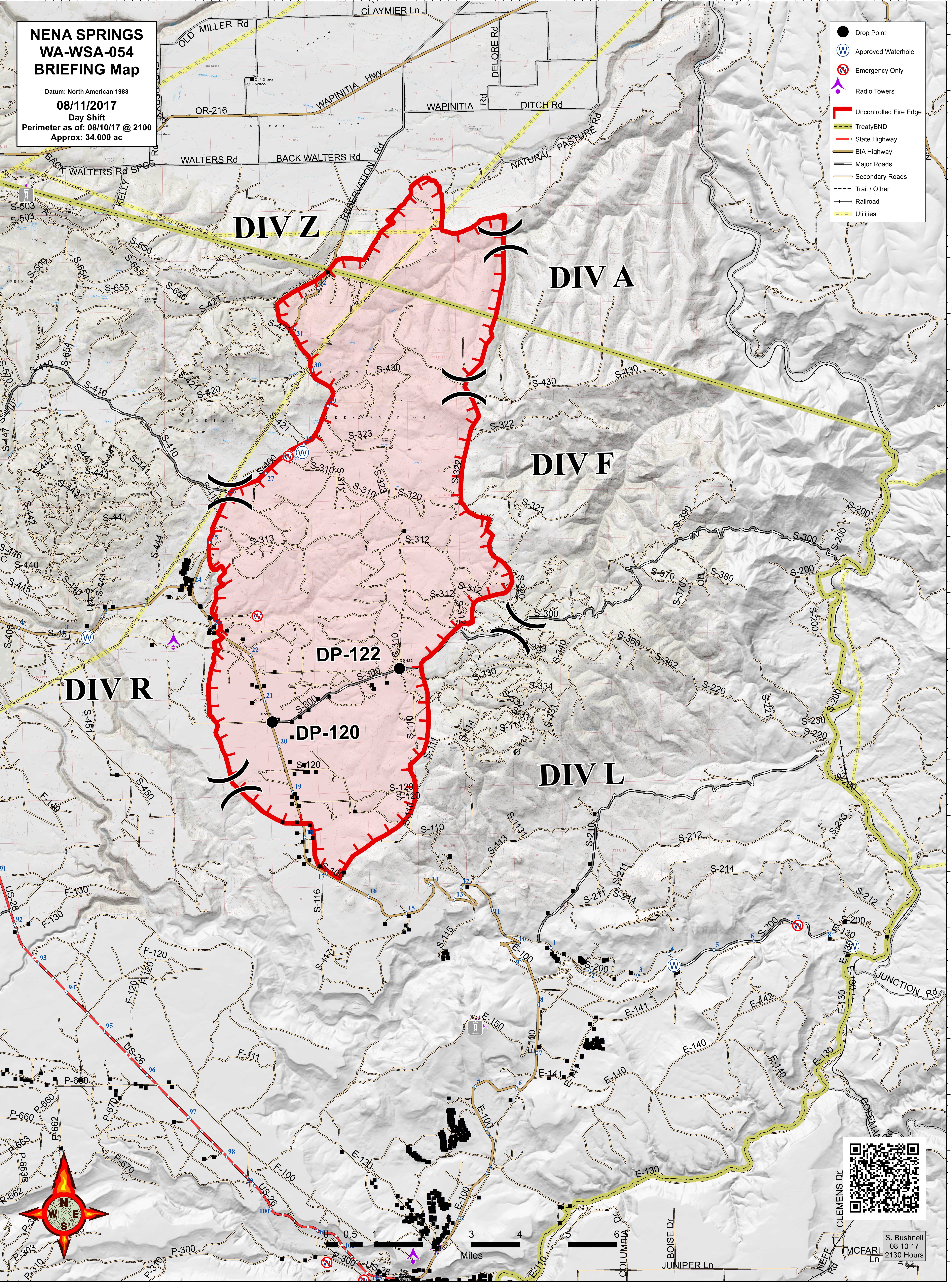
08/11/2017

Day Shift

Perimeter as of: 08/10/17 @ 2100

Approx: 34,000 ac

- Drop Point
- ⊕ Approved Waterhole
- ⊖ Emergency Only
- ⬆ Radio Towers
- ▬ Uncontrolled Fire Edge
- ▬ TreatyBND
- ▬ State Highway
- ▬ BIA Highway
- ▬ Major Roads
- ▬ Secondary Roads
- - - Trail / Other
- ▬ Railroad
- ▬ Utilities



S. Bushnell
08 10 17
2130 Hours