

# NENA SPRINGS WA-WSA-054 PACE Planning

Datum: North American 1983

08/11/2017

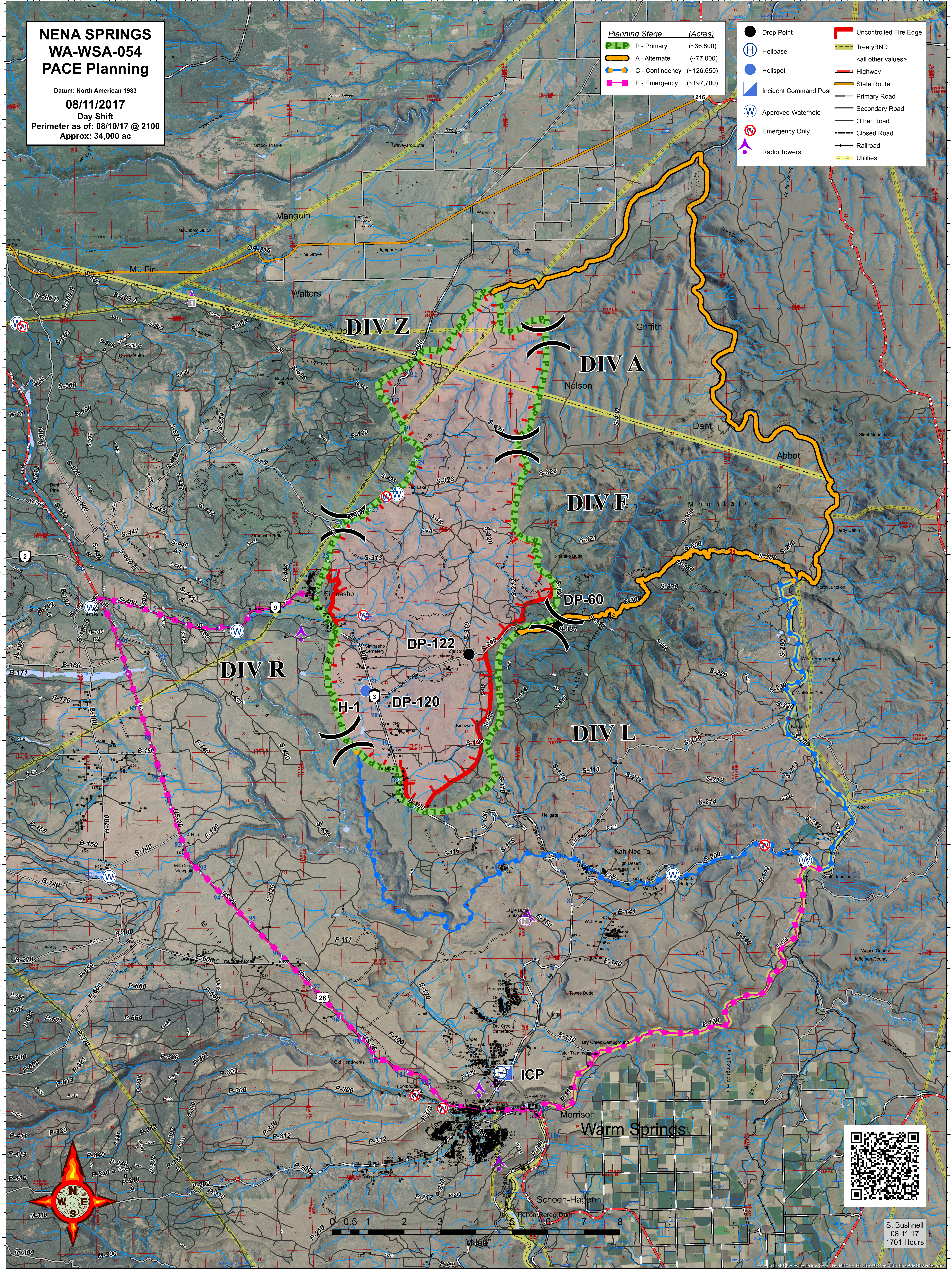
Day Shift

Perimeter as of: 08/10/17 @ 2100

Approx: 34,000 ac

Planning Stage	(Acres)
P - Primary	(~36,800)
A - Alternate	(~77,000)
C - Contingency	(~126,650)
E - Emergency	(~197,700)

- Drop Point
- Helibase
- Helispot
- Incident Command Post
- Approved Waterhole
- Emergency Only
- Radio Towers
- Uncontrolled Fire Edge
- TreatyBND
- Highway
- State Route
- Primary Road
- Secondary Road
- Other Road
- Closed Road
- Railroad
- Utilities



S. Bushnell  
08 11 17  
1701 Hours