

NENA SPRINGS



TFR 7/7586 (7,500 MSL)

OR-WSA-054
PILOT Map



Division Break



Fire Area

08/11/2017

Approx. 34,000 ac

Perimeter as of 08/10/17 @ 2100

Datum: North American 1983



Declination 14.58° E

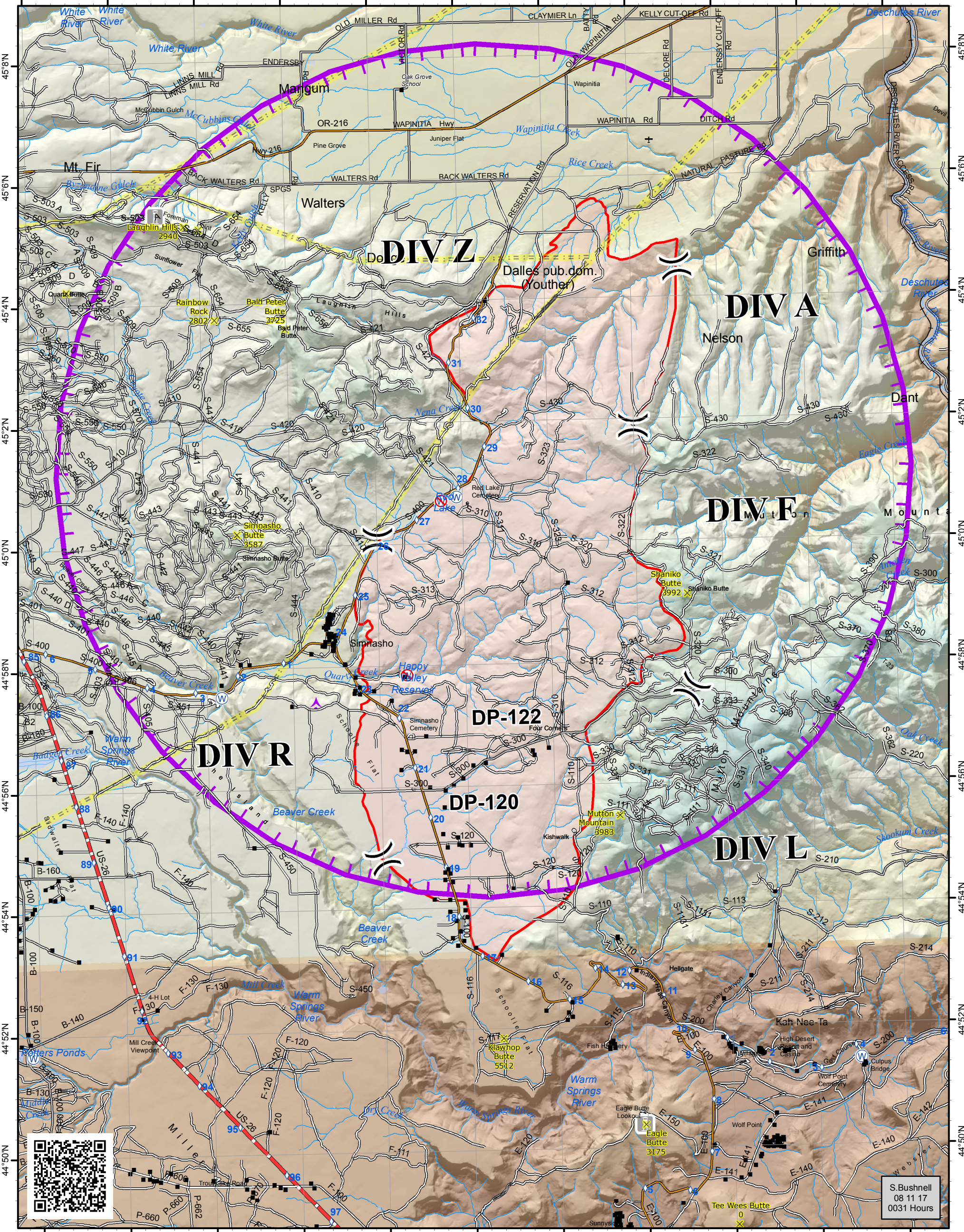
Datum: North American 1983



Nautical Miles

1 inch equals 1.5 nautical miles

121°28'W 121°26'W 121°24'W 121°22'W 121°20'W 121°18'W 121°16'W 121°14'W 121°12'W 121°10'W 121°8'W



121°28'W 121°26'W 121°24'W 121°22'W 121°20'W 121°18'W 121°16'W 121°14'W 121°12'W 121°10'W 121°8'W

S. Bushnell
08 11 17
0031 Hours