

NENA SPRINGS WA-WSA-054 Planning Map

Datum: North American 1983

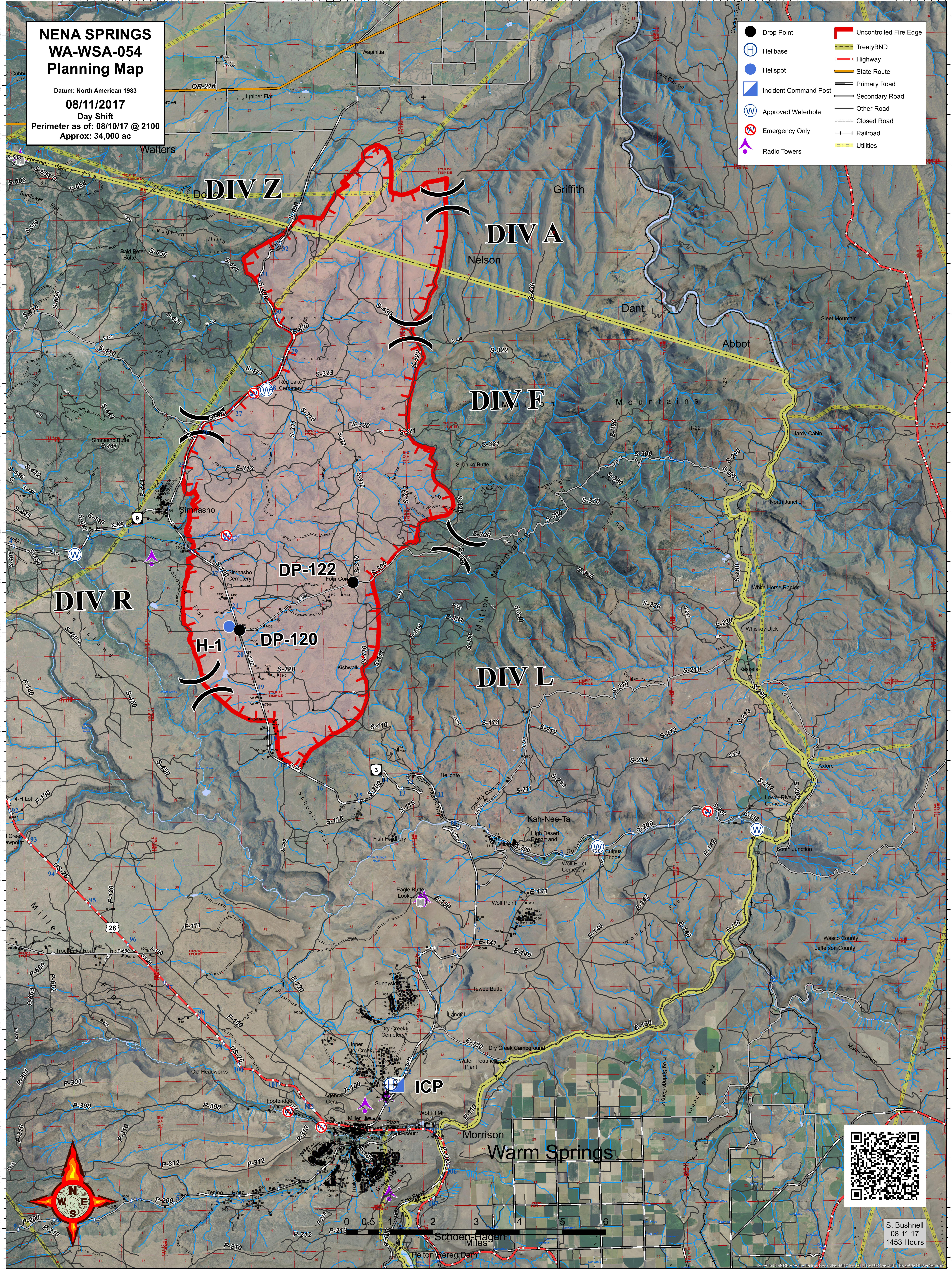
08/11/2017

Day Shift

Perimeter as of: 08/10/17 @ 2100

Approx: 34,000 ac

- Drop Point
- ⊕ Helibase
- Helispot
- ⊠ Incident Command Post
- ⊕ Approved Waterhole
- ⊗ Emergency Only
- ⊕ Radio Towers
- ▬ Uncontrolled Fire Edge
- ▬ TreatyBND
- ▬ Highway
- ▬ State Route
- ▬ Primary Road
- ▬ Secondary Road
- ▬ Other Road
- ▬ Closed Road
- ▬ Railroad
- ▬ Utilities



S. Bushnell
08 11 17
1453 Hours