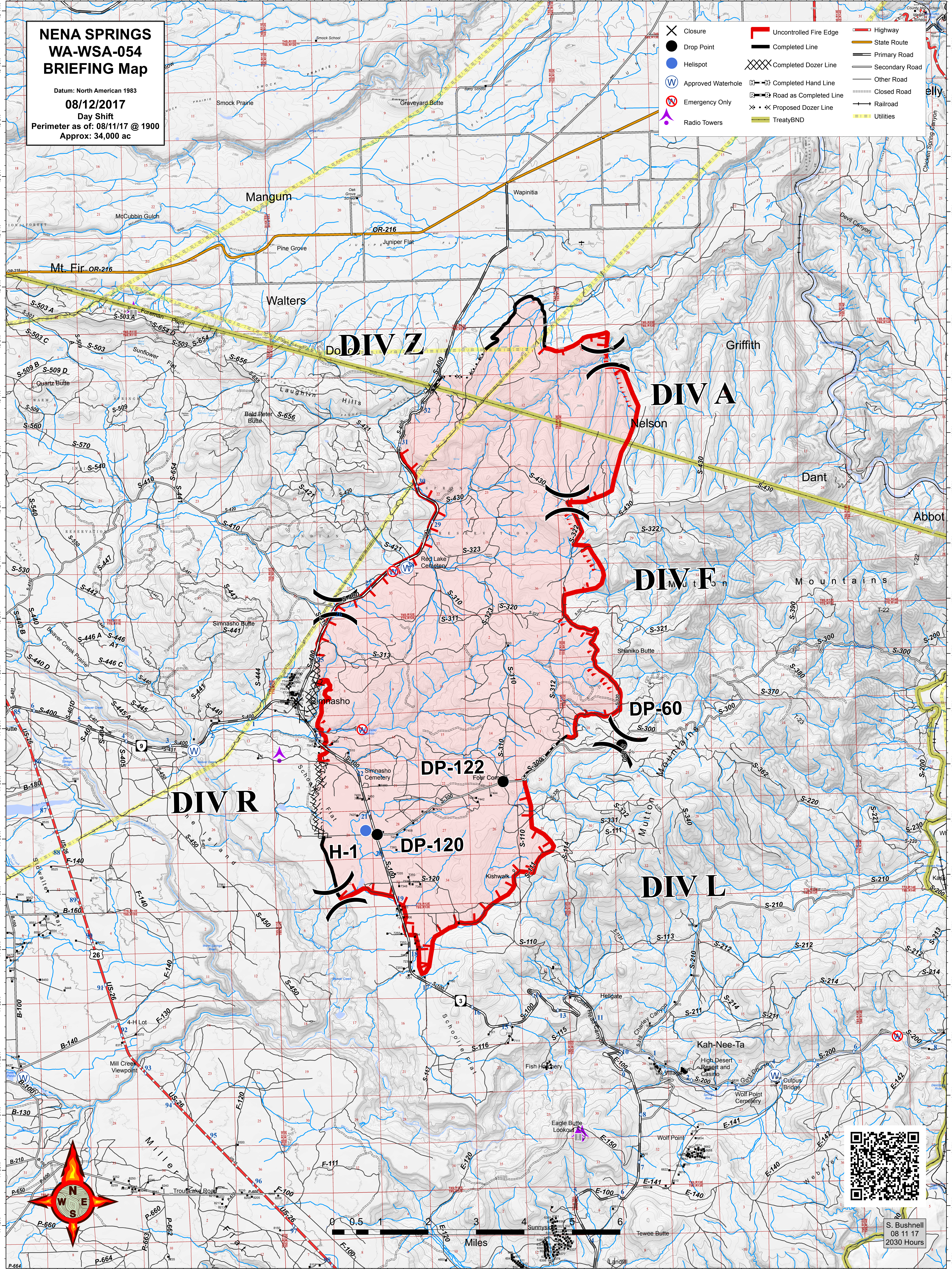


**NENA SPRINGS
WA-WSA-054
BRIEFING Map**

Datum: North American 1983
08/12/2017
 Day Shift
 Perimeter as of: 08/11/17 @ 1900
 Approx: 34,000 ac

- Closure
- Drop Point
- Helispot
- Approved Waterhole
- Emergency Only
- Radio Towers
- Uncontrolled Fire Edge
- Completed Line
- Completed Dozer Line
- Completed Hand Line
- Road as Completed Line
- Proposed Dozer Line
- TreatyBND
- Highway
- State Route
- Primary Road
- Secondary Road
- Other Road
- Closed Road
- Railroad
- Utilities



S. Bushnell
 08 11 17
 2030 Hours