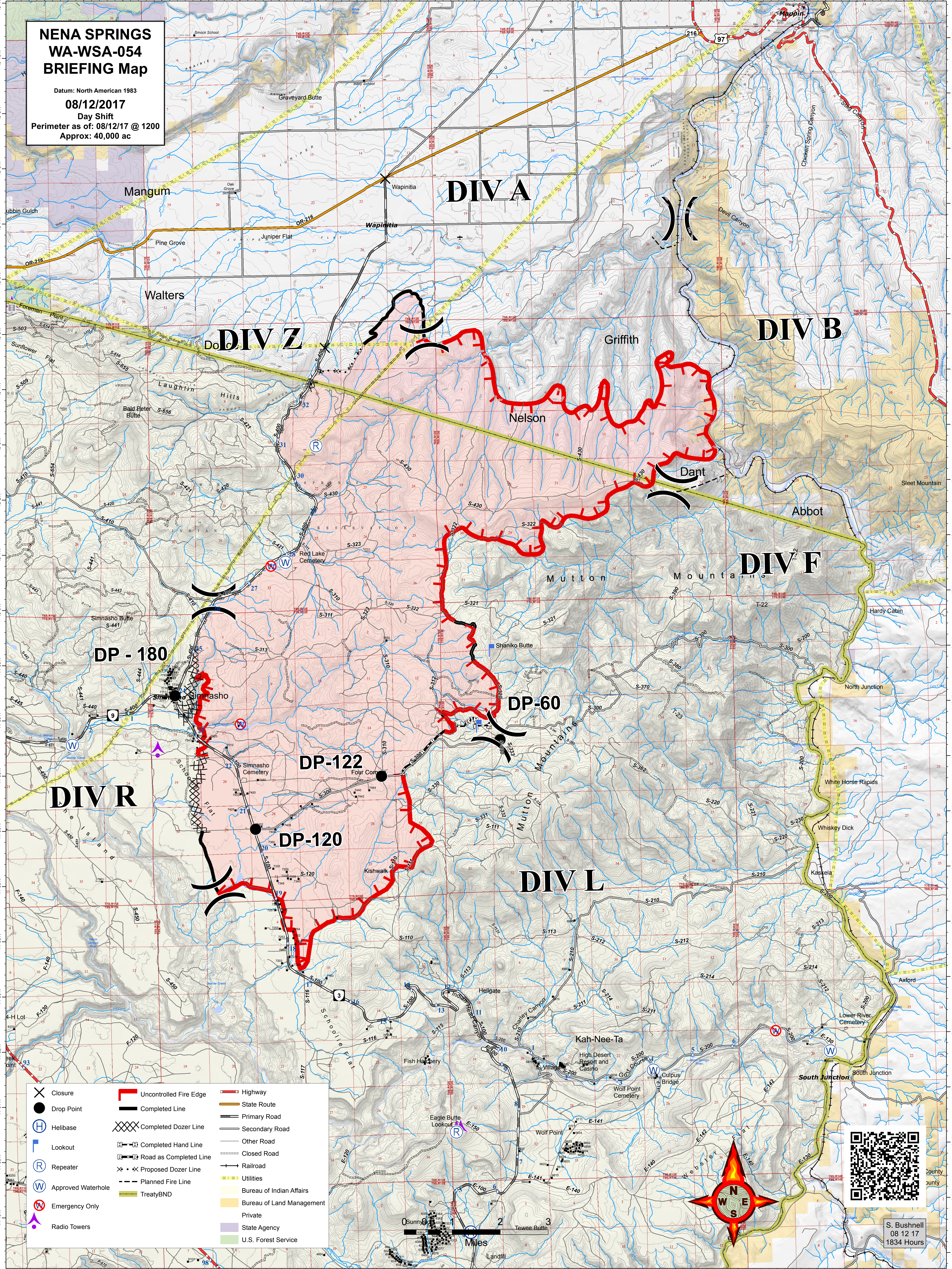
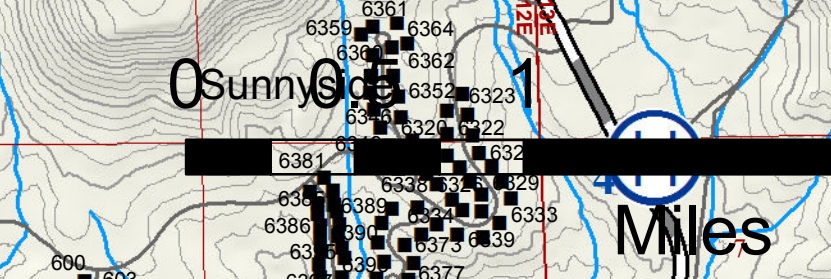


**NENA SPRINGS
WA-WSA-054
BRIEFING Map**

Datum: North American 1983
08/12/2017
 Day Shift
 Perimeter as of: 08/12/17 @ 1200
 Approx: 40,000 ac



✕ Closure	🔴 Uncontrolled Fire Edge	🛣 Highway
● Drop Point	🟢 Completed Line	🛣 State Route
Ⓜ Helibase	🔲 Completed Dozer Line	🛣 Primary Road
📍 Lookout	🔲 Completed Hand Line	🛣 Secondary Road
Ⓜ Repeater	🔲 Road as Completed Line	🛣 Other Road
Ⓜ Approved Waterhole	✕ Proposed Dozer Line	🛣 Closed Road
Ⓜ Emergency Only	⋯ Planned Fire Line	🛣 Railroad
📡 Radio Towers	🟢 Treaty BND	🛣 Utilities
	🟡 Bureau of Indian Affairs	🟡 Bureau of Land Management
	🟠 Private	🟠 State Agency
	🟢 U.S. Forest Service	



S. Bushnell
 08 12 17
 1834 Hours