

NENA SPRINGS

OR-WSA-054 Helispot Confirmation Map

08/12/2017
Approx. 40,000 ac
Perimeter as of 08/12/17 @ 1200
Datum: North American 1983



Declination 14.58° E
Datum: North American 1983

PROPOSED

- TFR 7/8367 (7,500 MSL)
- Proposed New TFR
- TFR Coordinate
- Fire Area
- Highway
- State Route
- Primary Road
- Secondary Road
- Trail / Other
- Division Break
- Helibase
- Helispot
- ICP
- Repeater

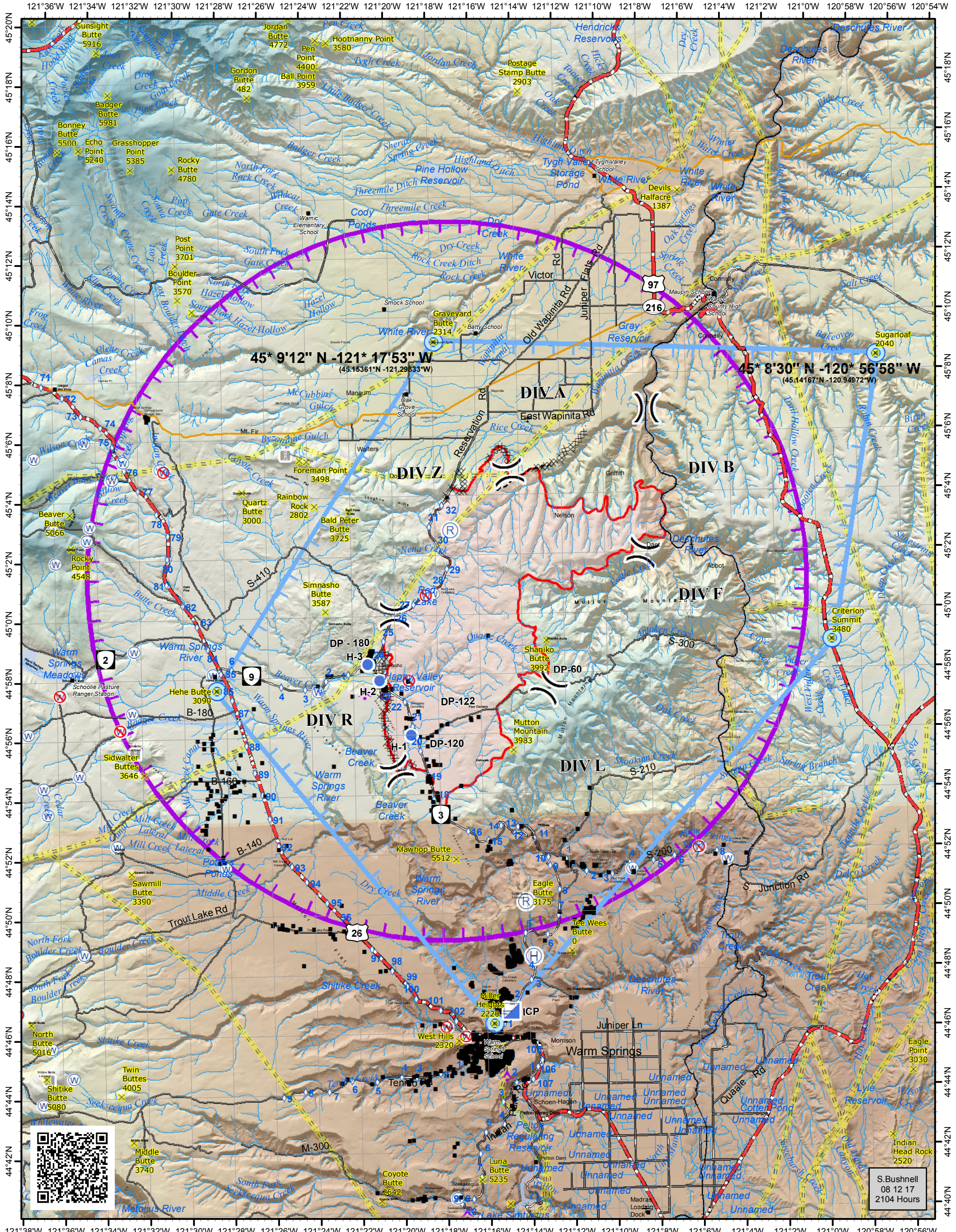
0 0.5 1 2 3
Nautical Miles
1 inch equals 3 nautical miles

LABEL	LON_DM	LAT_DM

TYPE: Helibase		
Warm Springs Helibase	121 13.780 W	44 48.569 N

TYPE: Helispot (Unconfirmed)		
H-1	121 19.331 W	44 56.027 N
H-2	121 20.763 W	44 57.877 N
H-3	121 21.318 W	44 58.433 N
DP-60	121 12.756 W	44 57.478 N

TYPE: Proposed TFR Coordinate		
Graveyard Butte	121 17.899 W	45 09.216 N
Hehe Butte	121 28.433 W	44 57.616 N
Miller Heights	121 15.666 W	44 46.333 N
Criterion Summit	121 59.366 W	44 59.983 N
Sugarloaf	121 56.953 W	45 08.500 N



S. Bushnell
08 12 17
2104 Hours