

NENA SPRINGS

OR-WSA-054
PILOT Map

08/11/2017
Approx. 34,000 ac
Perimeter as of 08/10/17 @ 2100
Datum: North American 1983

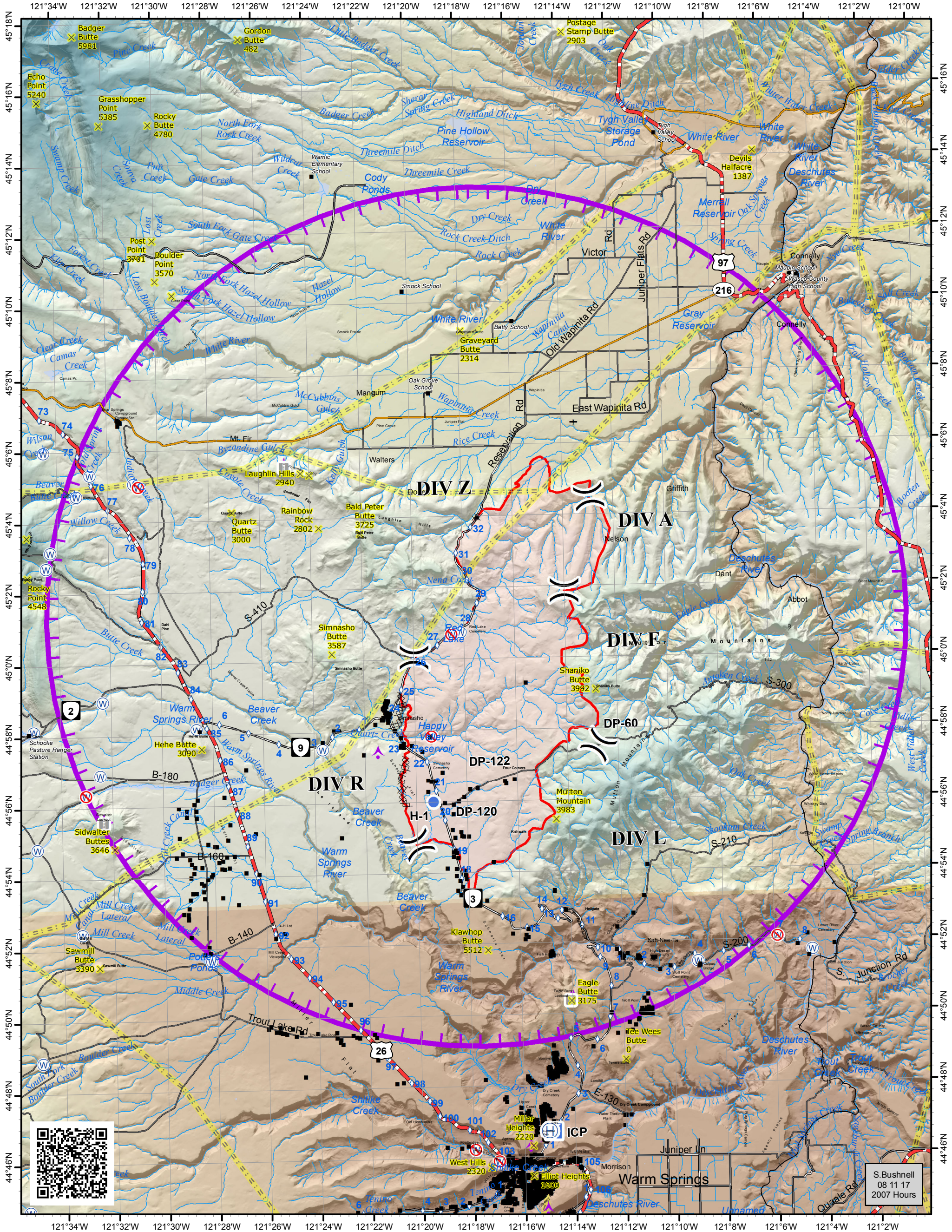


Declination 14.58° E
Datum: North American 1983

- TFR 7/8367 (7,500 MSL)
- Fire Area
- Highway
- State Route
- Primary Road
- Secondary Road
- Division Break
- Helibase
- Helispot
- Incident Command Post

LABEL	LON_DM	LAT_DM
TYPE: Helibase		
Warm Springs Helibase	121 15.038 W	44 46.747 N
TYPE: Helispot (Unconfirmed)		
H-1	121 19.33 W	44 56.027 N
DP-60	121 12.756 W	44 57.478 N

0 0.5 1 2 3
Nautical Miles
1 inch equals 2.5 nautical miles



S. Bushnell
08 11 17
2007 Hours