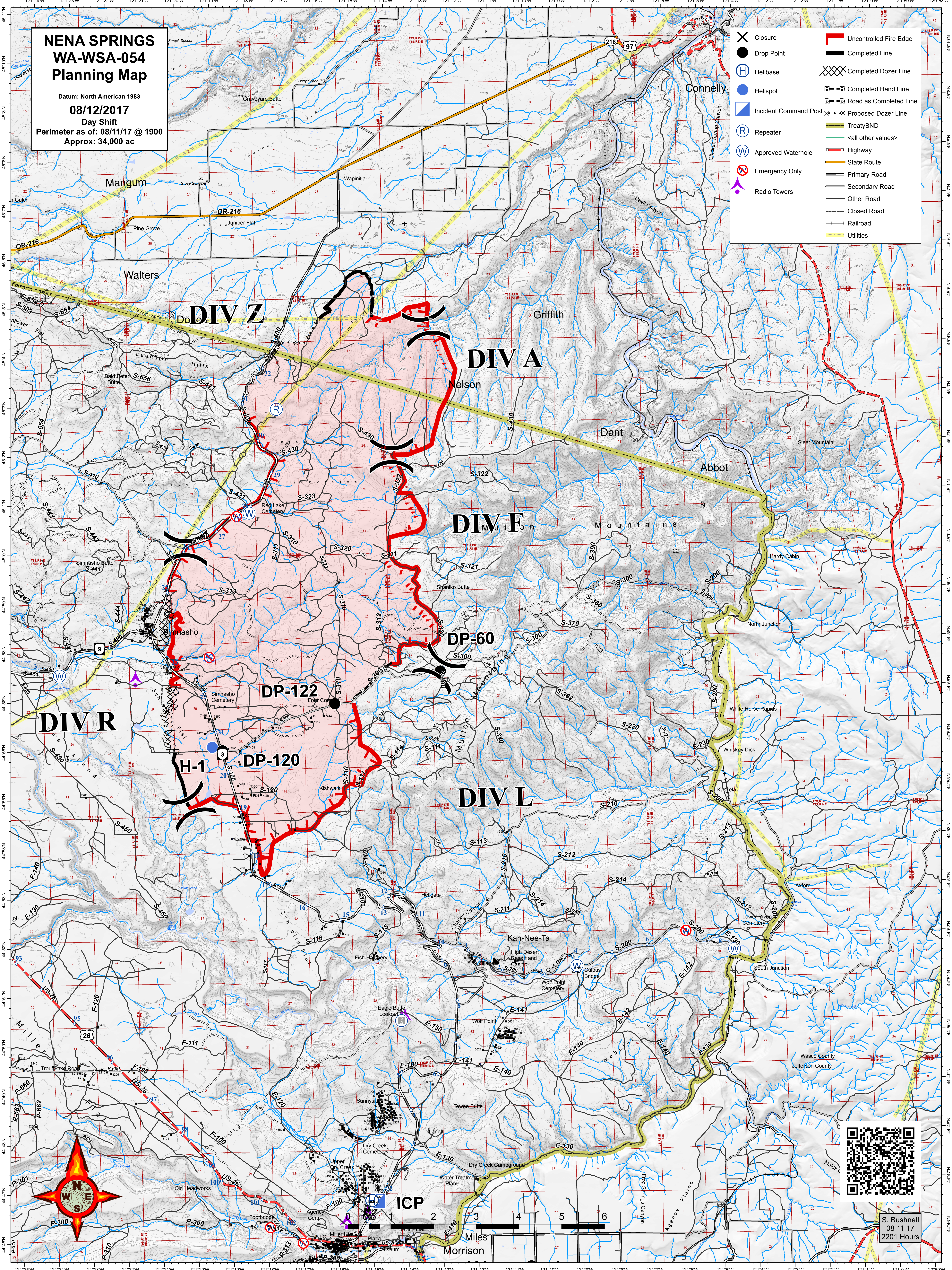


# NEA SPRINGS WA-WSA-054 Planning Map

Datum: North American 1983  
08/12/2017  
Day Shift  
Perimeter as of: 08/11/17 @ 1900  
Approx: 34,000 ac

- X Closure
- Drop Point
- H Helibase
- Helispot
- IC Incident Command Post
- R Repeater
- W Approved Waterhole
- W Emergency Only
- Radio Towers
- Uncontrolled Fire Edge
- Completed Line
- Completed Dozer Line
- Completed Hand Line
- Road as Completed Line
- Proposed Dozer Line
- Treaty BND
- <all other values>
- Highway
- State Route
- Primary Road
- Secondary Road
- Other Road
- Closed Road
- Railroad
- Utilities



S. Bushnell  
08 11 17  
2201 Hours