

# NENA SPRINGS WA-WSA-054 Planning Map

Datum: North American 1983

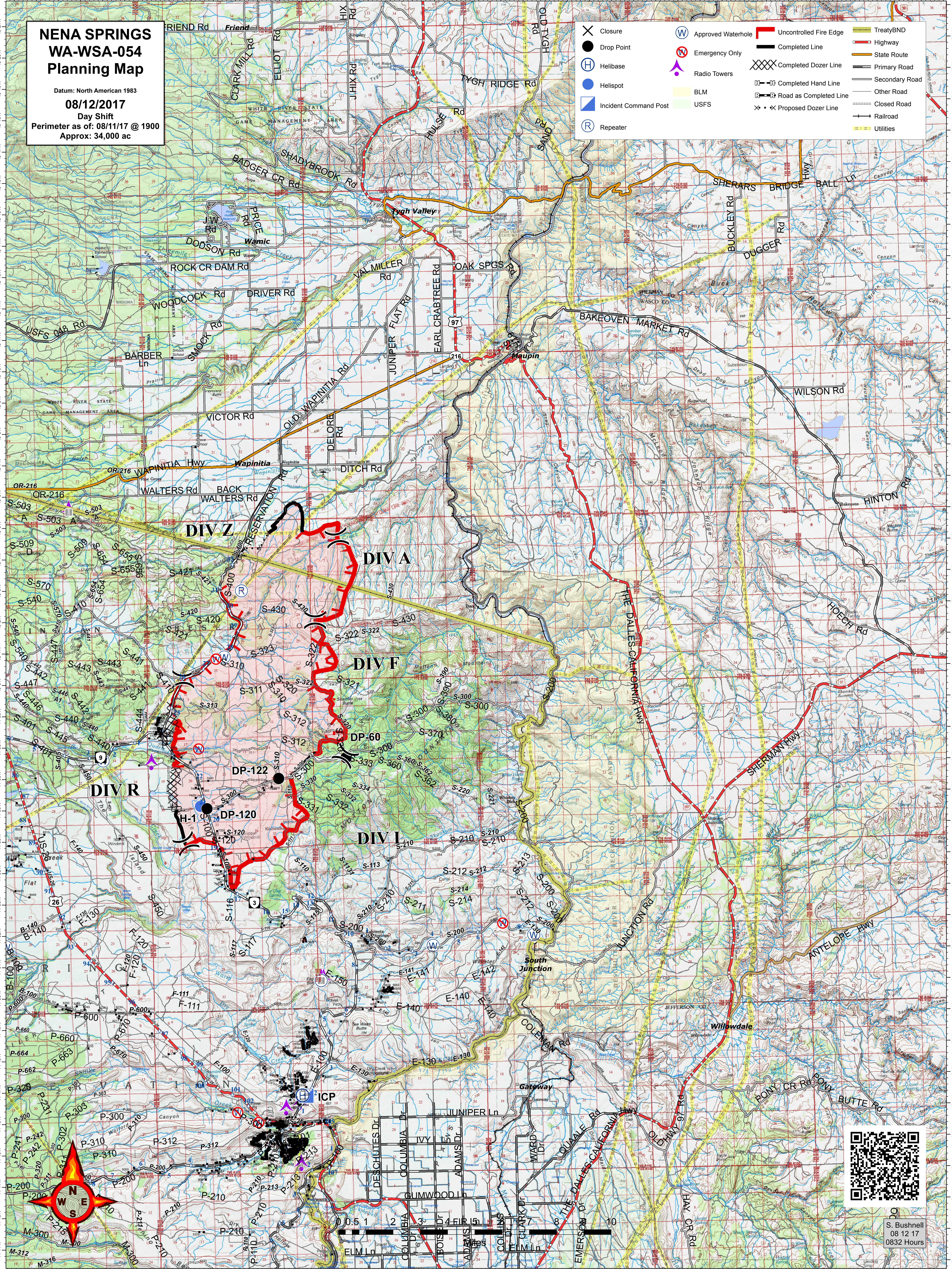
08/12/2017

Day Shift

Perimeter as of: 08/11/17 @ 1900

Approx: 34,000 ac

- X Closure
- Drop Point
- ⊕ Helibase
- ⊙ Helispot
- Ⓜ Incident Command Post
- Ⓡ Repeater
- Ⓜ Approved Waterhole
- Ⓡ Emergency Only
- Ⓡ Radio Towers
- Ⓡ BLM
- Ⓡ USFS
- Uncontrolled Fire Edge
- Completed Line
- Ⓡ Completed Dozer Line
- Ⓡ Completed Hand Line
- Ⓡ Road as Completed Line
- Ⓡ Proposed Dozer Line
- TreatyBND
- Highway
- State Route
- Primary Road
- Secondary Road
- Other Road
- Closed Road
- Railroad
- Utilities



S. Bushnell  
08 12 17  
0832 Hours