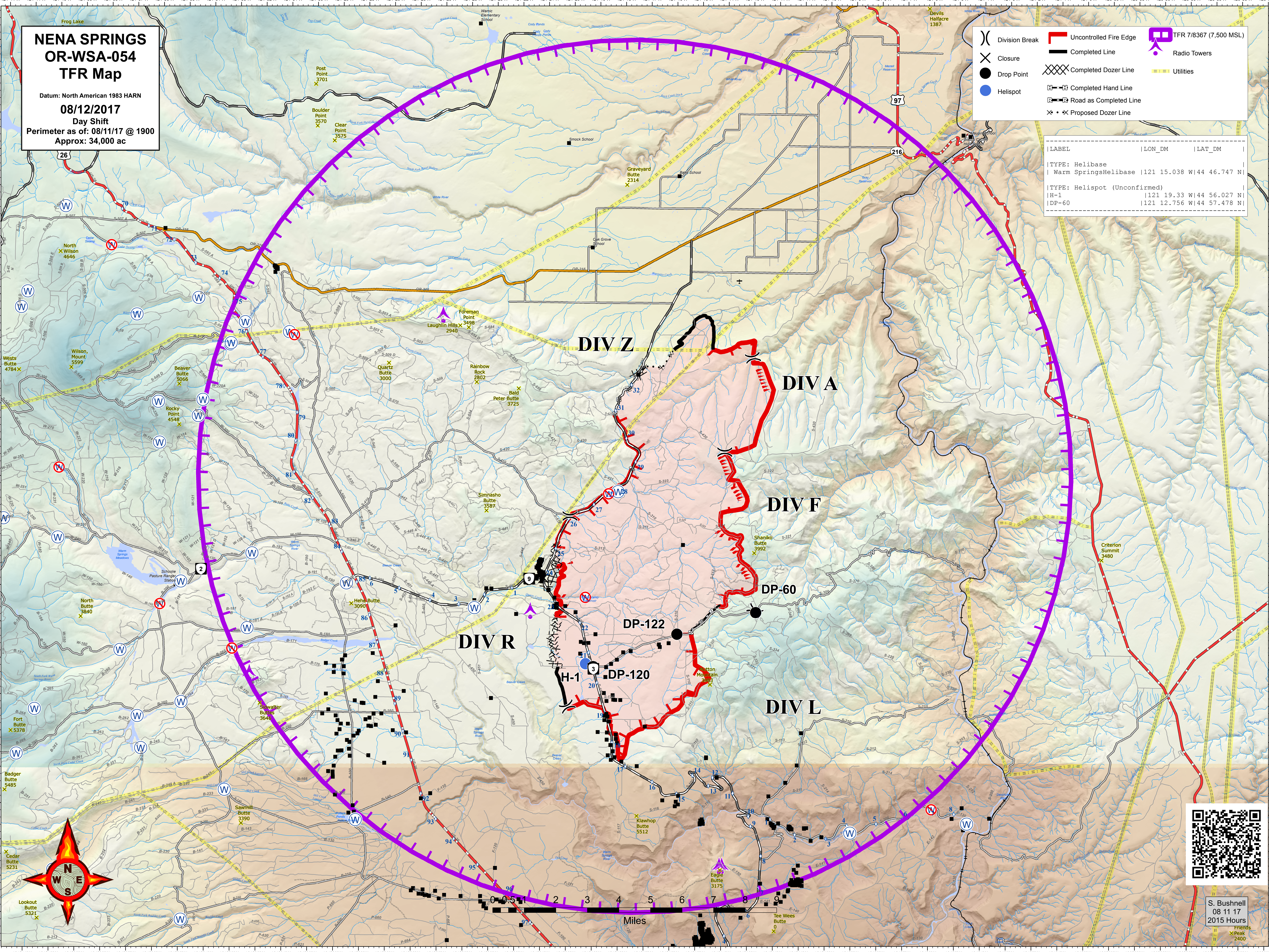


NENA SPRINGS OR-WSA-054 TFR Map

Datum: North American 1983 HARN
08/12/2017
 Day Shift
 Perimeter as of: 08/11/17 @ 1900
 Approx: 34,000 ac

()	Division Break	▬	Uncontrolled Fire Edge	⬮	TFR 7/8367 (7,500 MSL)
✕	Closure	▬	Completed Line	⬮	Radio Towers
●	Drop Point	▬	Completed Dozer Line	⬮	Utilities
⊙	Helispot	▬	Completed Hand Line	⬮	
		▬	Road as Completed Line	⬮	
		⊙	Proposed Dozer Line		

Label	Lon_DM	Lat_DM
Type: Helibase Warm Springs Helibase	121 15.038 W	44 46.747 N
Type: Helispot (Unconfirmed) H-1	121 19.33 W	44 56.027 N
DP-60	121 12.756 W	44 57.478 N



S. Bushnell
 08 11 17
 2015 Hours