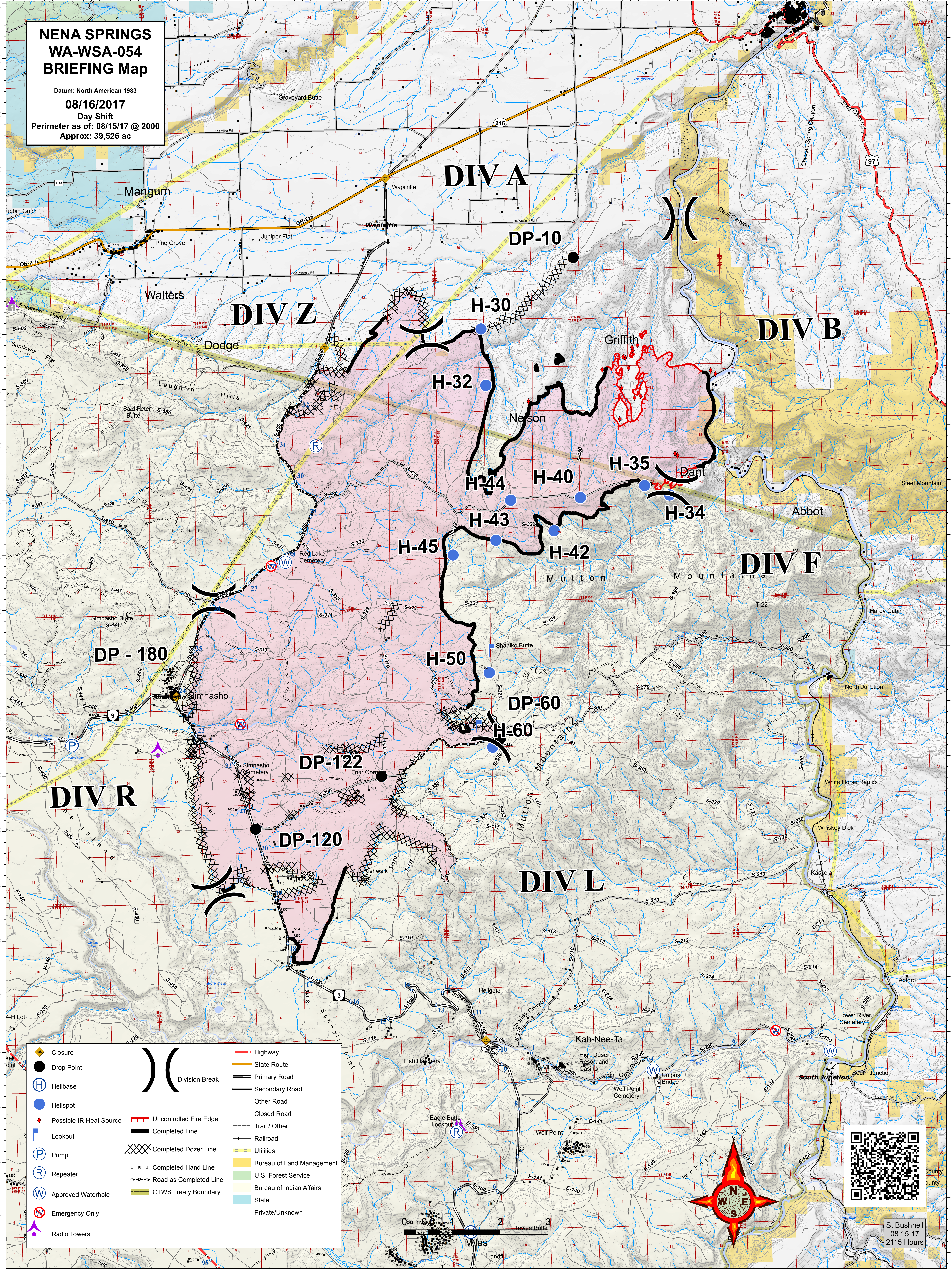


**NENA SPRINGS
WA-WSA-054
BRIEFING Map**

Datum: North American 1983
08/16/2017
 Day Shift
 Perimeter as of: 08/15/17 @ 2000
 Approx: 39,526 ac



- | | |
|------------------------|---------------------------|
| Closure | Highway |
| Drop Point | State Route |
| Helibase | Primary Road |
| Helispot | Secondary Road |
| Lookout | Other Road |
| Pump | Closed Road |
| Repeater | Trail / Other |
| Approved Waterhole | Railroad |
| Emergency Only | Completed Dozer Line |
| Radio Towers | Completed Hand Line |
| Division Break | Road as Completed Line |
| Uncontrolled Fire Edge | Utilities |
| Completed Line | Bureau of Land Management |
| Completed Dozer Line | U.S. Forest Service |
| Completed Hand Line | Bureau of Indian Affairs |
| Road as Completed Line | State |
| Trail / Other | Private/Unknown |
| Railroad | |



S. Bushnell
08 15 17
2115 Hours

0 1 2 3
Miles