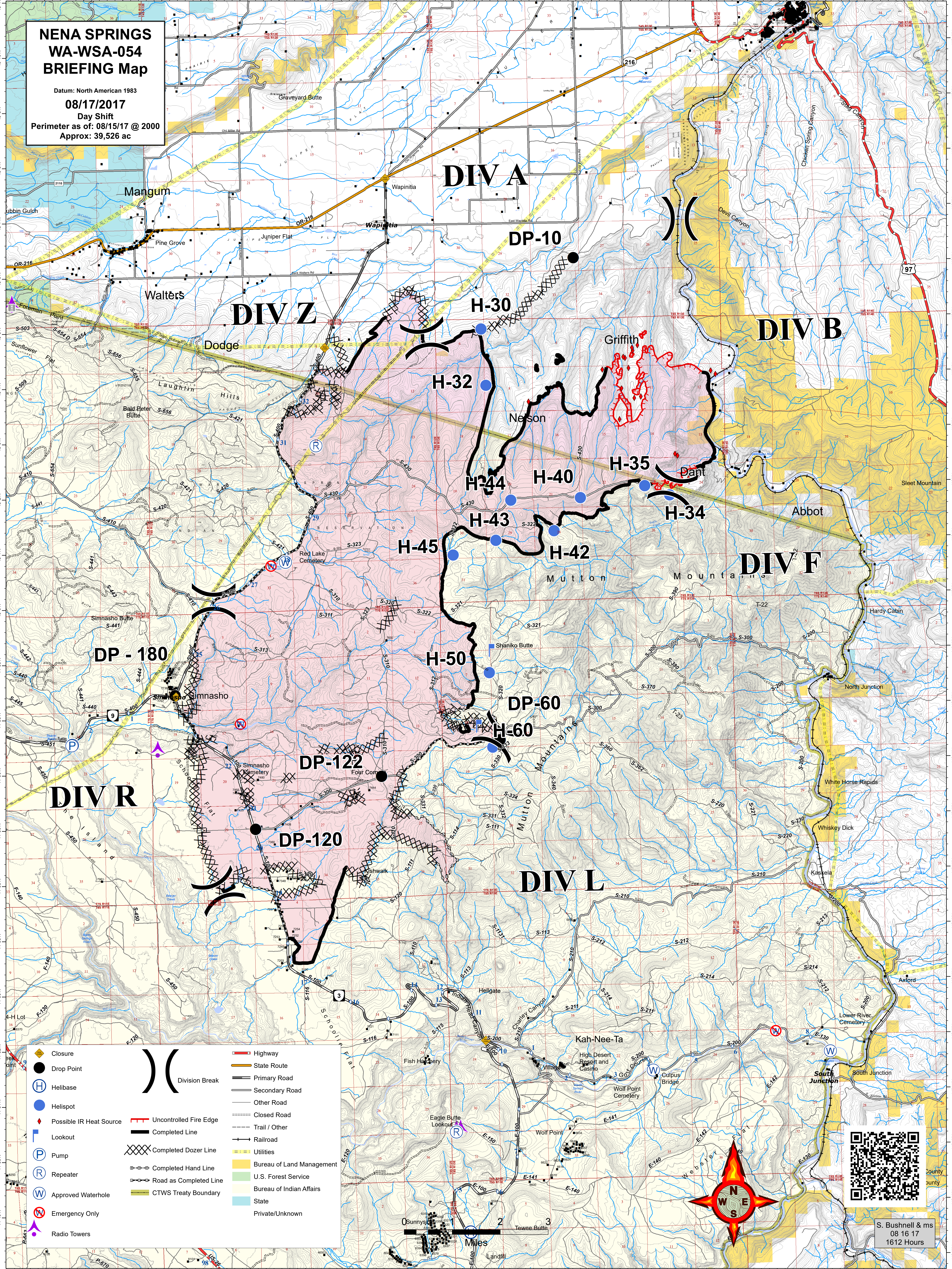


NENA SPRINGS WA-WSA-054 BRIEFING Map

Datum: North American 1983
08/17/2017
 Day Shift
 Perimeter as of: 08/15/17 @ 2000
 Approx: 39,526 ac



	Closure		Highway
	Drop Point		State Route
	Helibase		Primary Road
	Helispot		Secondary Road
	Lookout		Other Road
	Pump		Closed Road
	Repeater		Trail / Other
	Approved Waterhole		Railroad
	Emergency Only		Completed Dozer Line
	Radio Towers		Completed Hand Line
	Uncontrolled Fire Edge		Road as Completed Line
	Completed Line		Utilities
	Division Break		Bureau of Land Management
	Division Break		U.S. Forest Service
	Division Break		Bureau of Indian Affairs
	Division Break		State
	Division Break		Private/Unknown



S. Bushnell & ms
 08 16 17
 1612 Hours

Miles
 0 1 2 3