

NEA SPRINGS WA-WSA-054 BRIEFING Map

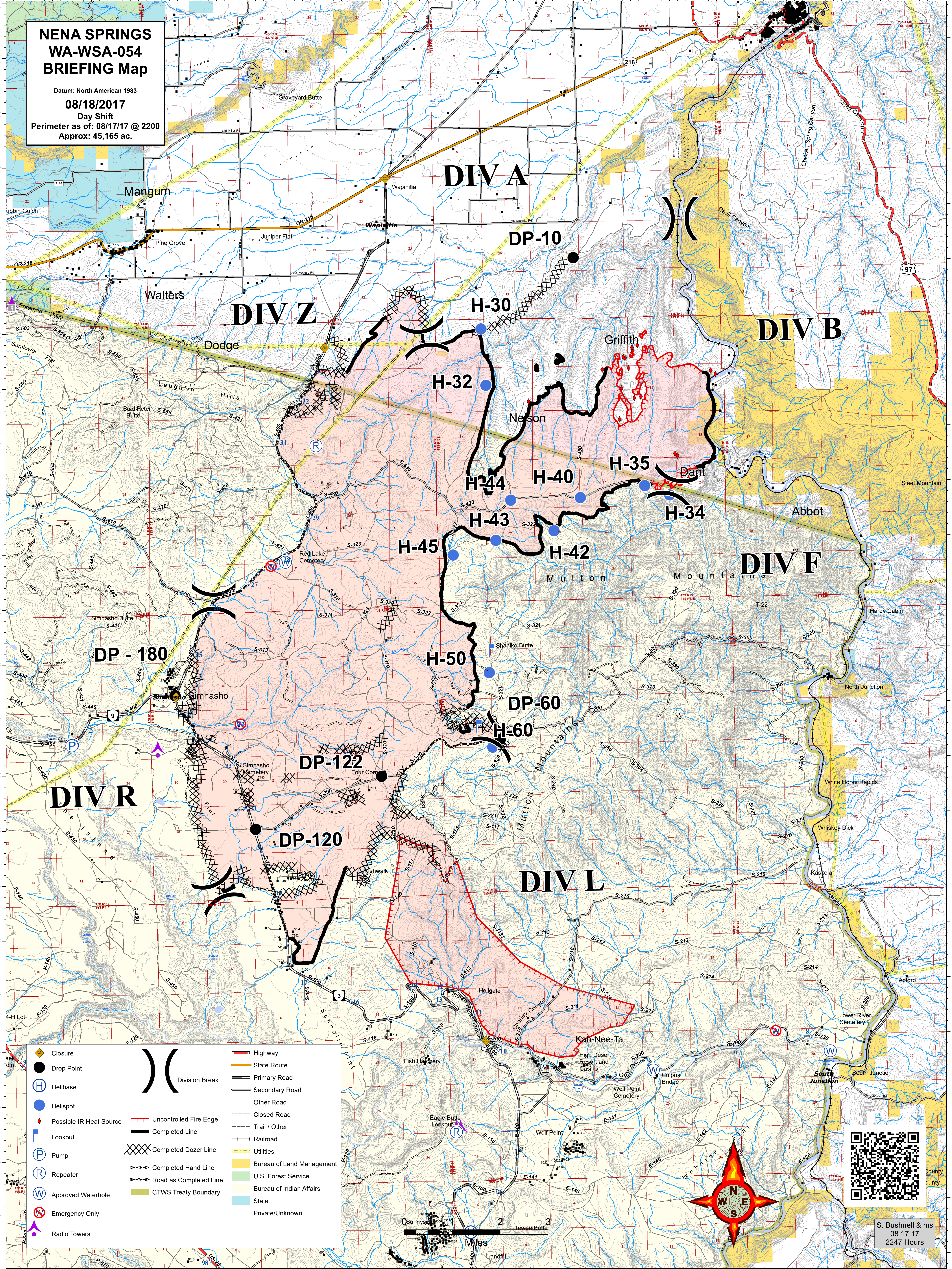
Datum: North American 1983

08/18/2017

Day Shift

Perimeter as of: 08/17/17 @ 2200

Approx: 45,165 ac.



	Closure		Highway
	Drop Point		State Route
	Helibase		Primary Road
	Helispot		Secondary Road
	Lookout		Other Road
	Pump		Closed Road
	Repeater		Trail / Other
	Approved Waterhole		Railroad
	Emergency Only		Completed Dozer Line
	Radio Towers		Completed Hand Line
	Uncontrolled Fire Edge		Road as Completed Line
	Completed Line		Utilities
	Division Break		Bureau of Land Management
	Completed Dozer Line		U.S. Forest Service
	Bureau of Land Management		Bureau of Indian Affairs
	U.S. Forest Service		State
	Bureau of Indian Affairs		Private/Unknown

0 1 2 3 Miles



S. Bushnell & ms
08 17 17
2247 Hours