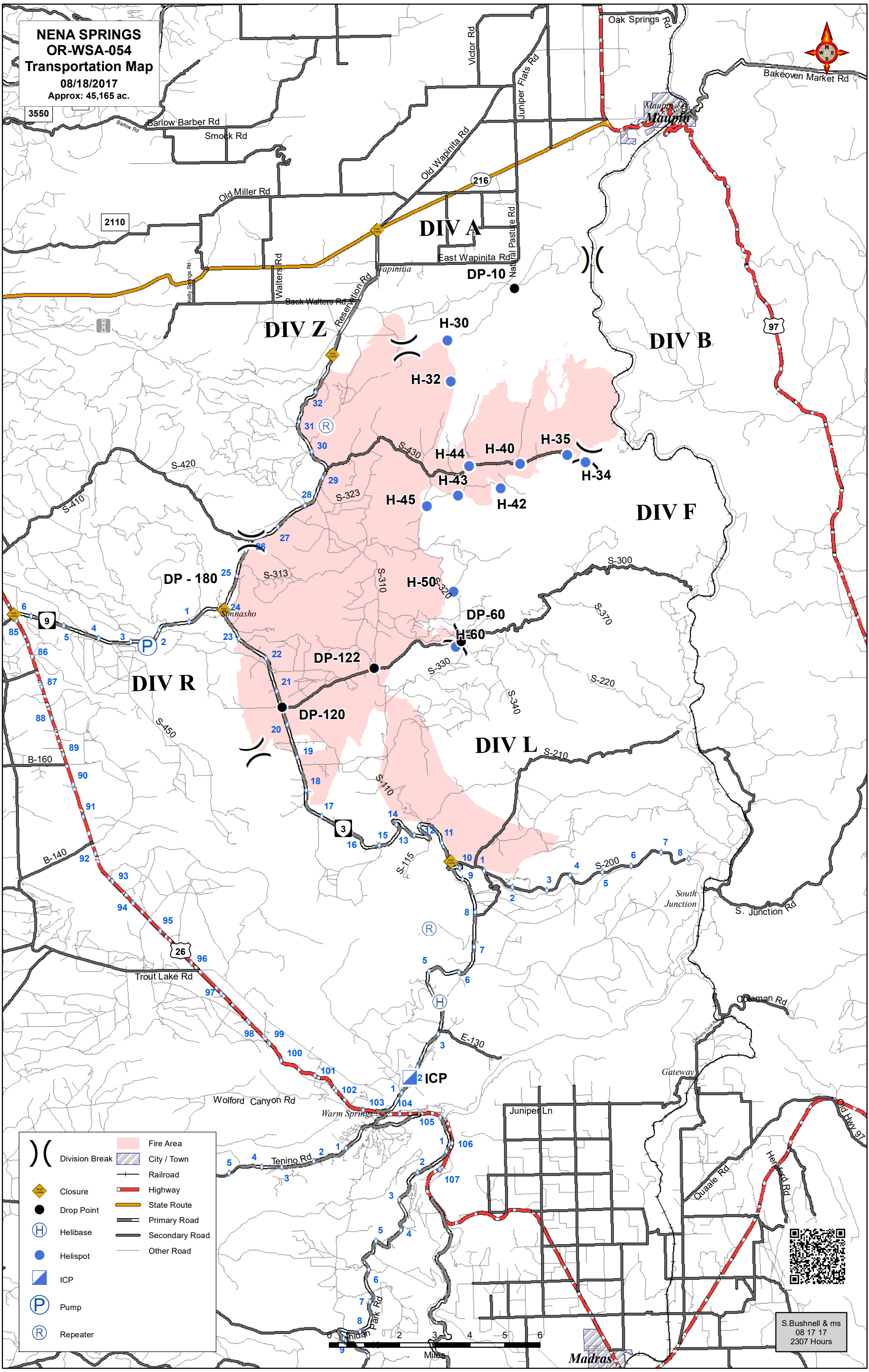


**NENA SPRINGS  
OR-WSA-054  
Transportation Map**  
08/18/2017  
Approx: 45,165 ac.



- |  |                |  |                |
|--|----------------|--|----------------|
|  | Division Break |  | Fire Area      |
|  | City / Town    |  | Railroad       |
|  | Closure        |  | Highway        |
|  | Drop Point     |  | State Route    |
|  | Helibase       |  | Primary Road   |
|  | Helispot       |  | Secondary Road |
|  | ICP            |  | Other Road     |
|  | Pump           |  |                |
|  | Repeater       |  |                |



S. Bushnell & ms  
08 17 17  
2307 Hours