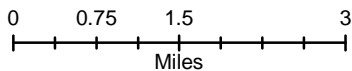


**NENA SPRINGS  
OR-WSA-054  
IAP Map**

08/16/2017 Day Shift  
Perimeter as of: 08/15/17 @ 2000  
Approx: 39,526 ac



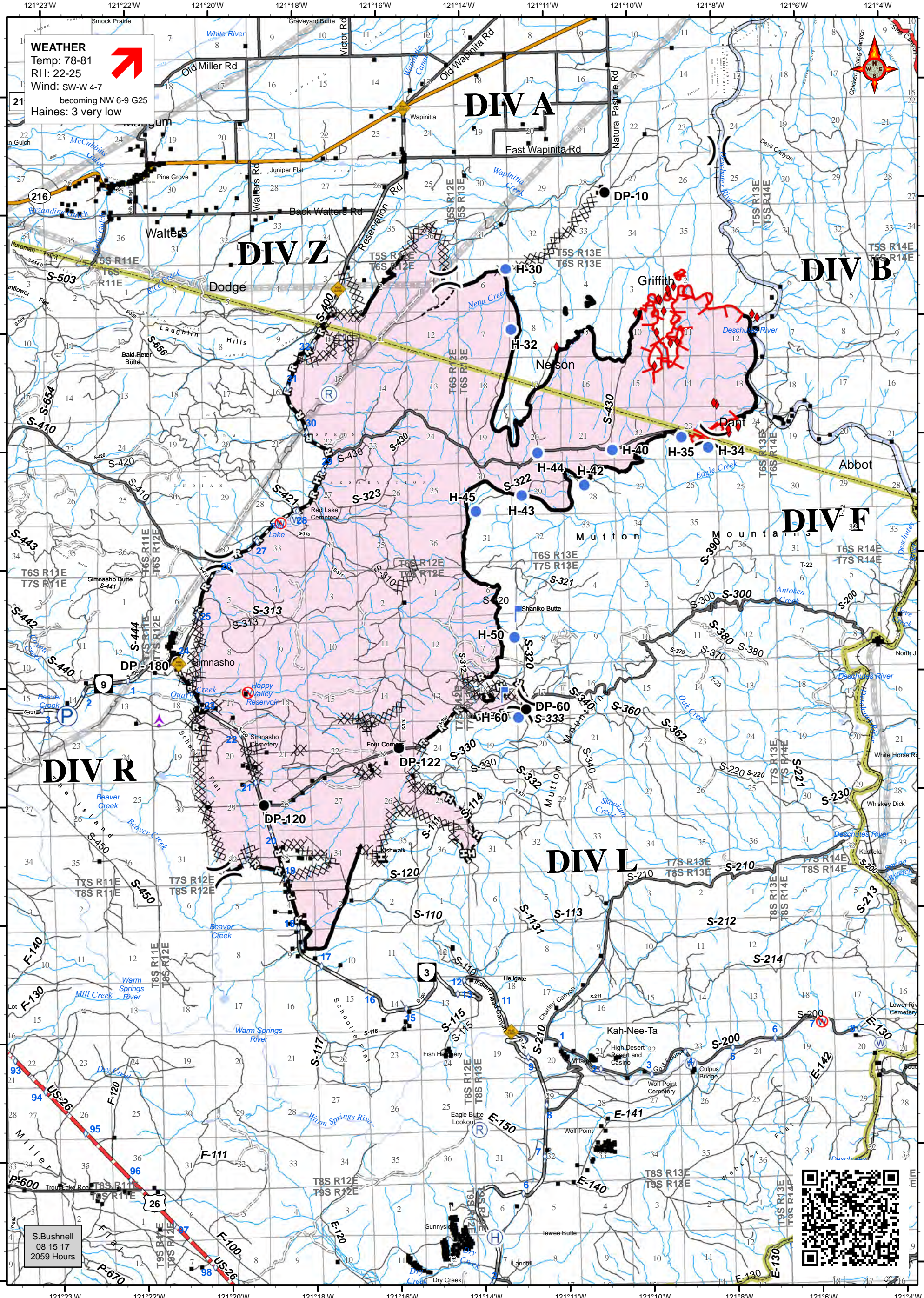
Datum: North American 1983

- ( ) Division Break
- ◆ Closure
- Drop Point
- (H) Helibase
- Helispot
- ◆ Possible IR Heat Source
- ⬆ Lookout
- (P) Pump
- (R) Repeater
- (W) Approved Waterhole
- (W with slash) Emergency Only
- ⬆ Aerial Hazard

- ⌈ Uncontrolled Fire Edge
- Completed Line
- ⊗ Completed Dozer Line
- ⌈ Completed Hand Line
- ⌈ Road as Completed Line

- ▬ Utility
- ▬ Highway
- ▬ State Route
- ▬ Primary Road
- ▬ Secondary Road
- ▬ Other Road
- ▬ Closed Road
- ⋯ Trail / Other
- ▬ Railroad

**WEATHER**  
Temp: 78-81  
RH: 22-25  
Wind: SW-W 4-7  
becoming NW 6-9 G25  
Haines: 3 very low



S. Bushnell  
08 15 17  
2059 Hours

