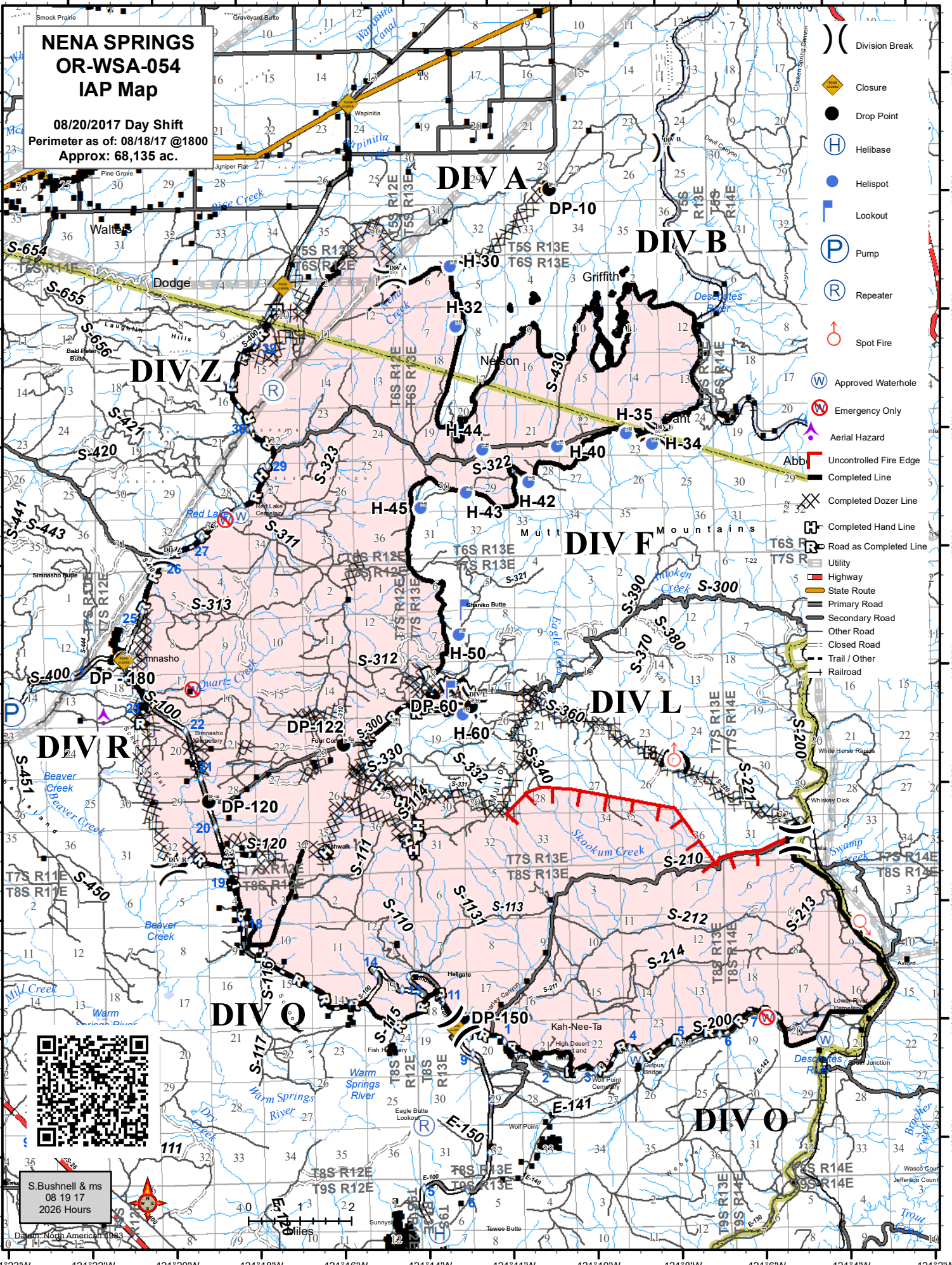


# NENA SPRINGS OR-WSA-054 IAP Map

08/20/2017 Day Shift  
Perimeter as of: 08/18/17 @1800  
Approx: 68,135 ac.

- ( ) Division Break
- ◆ Closure
- Drop Point
- H Helibase
- Helispot
- Lookout
- P Pump
- R Repeater
- ♂ Spot Fire
- W Approved Waterhole
- W Emergency Only
- Abb Uncontrolled Fire Edge
- Completed Line
- ⊗ Completed Dozer Line
- ⊞ Completed Hand Line
- ⊞ Road as Completed Line
- Utility
- 5 Highway
- State Route
- Primary Road
- Secondary Road
- Other Road
- Closed Road
- Trail / Other
- Railroad



S. Bushnell & ms  
08 19 17  
2026 Hours

© 1983  
Dartmouth North America