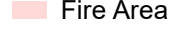
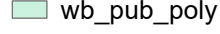
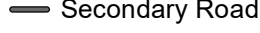
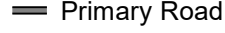
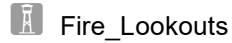
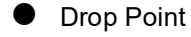


NENA SPRINGS OR-WSA-054 Pilot Map

08/19/2017 Day Shift
Perimeter as of: 08/18/17 @ 1800
Approx: 66,003 ac



City_and_Town_Lo...



| LABEL

| LON_DM

| LAT_DM

| TYPE: Helibase
| Helibase

| 121 13.78 W | 44 48.569 N |

| TYPE: Helispot

| H-30 | 121 13.014 W | 45 4.924 N |

| H-32 | 121 12.921 W | 45 3.900 N |

| H-34 | 121 8.291 W | 45 1.840 N |

| H-35 | 121 8.921 W | 45 2.020 N |

| H-40 | 121 10.571 W | 45 1.830 N |

| H-42 | 121 11.261 W | 45 1.240 N |

| H-43 | 121 12.751 W | 45 1.090 N |

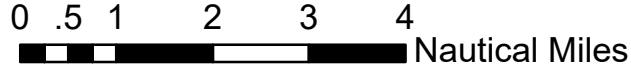
| H-44 | 121 12.351 W | 45 1.810 N |

| H-45 | 121 13.851 W | 45 0.840 N |

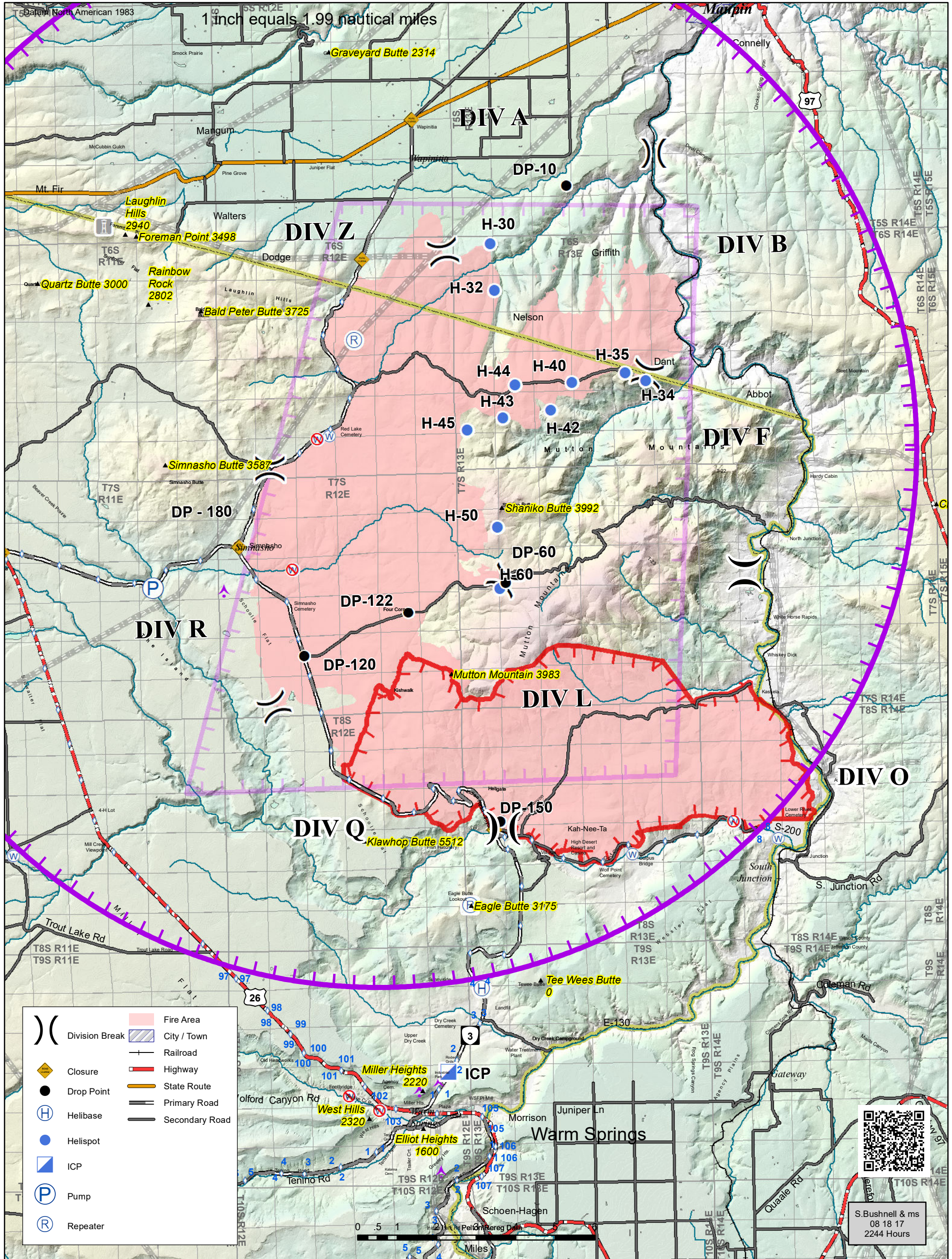
| H-50 | 121 12.994 W | 44 58.695 N |

| H-60 | 121 12.947 W | 44 57.354 N |

TFR7_4976 (7,500 MSL)



Declination 14.58 E



	Division Break		Fire Area
	Closure		City / Town
	Drop Point		Railroad
	Helibase		Highway
	Helispot		State Route
	ICP		Primary Road
	Pump		Secondary Road
	Repeater		

S. Bushnell & ms
08 18 17
2244 Hours