

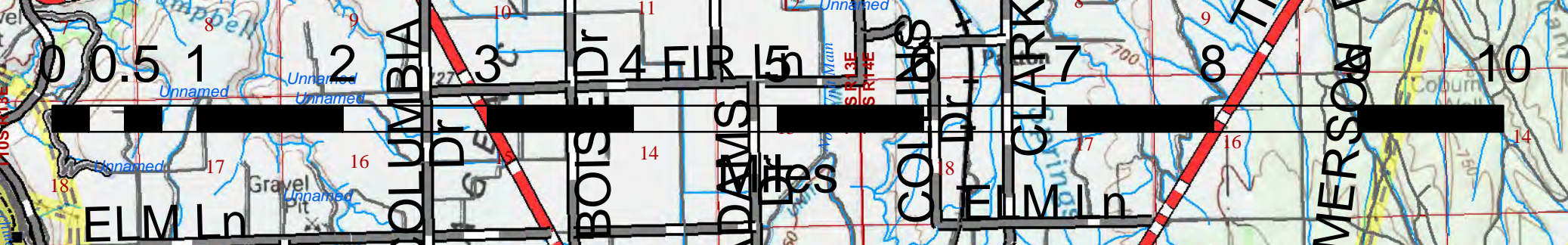
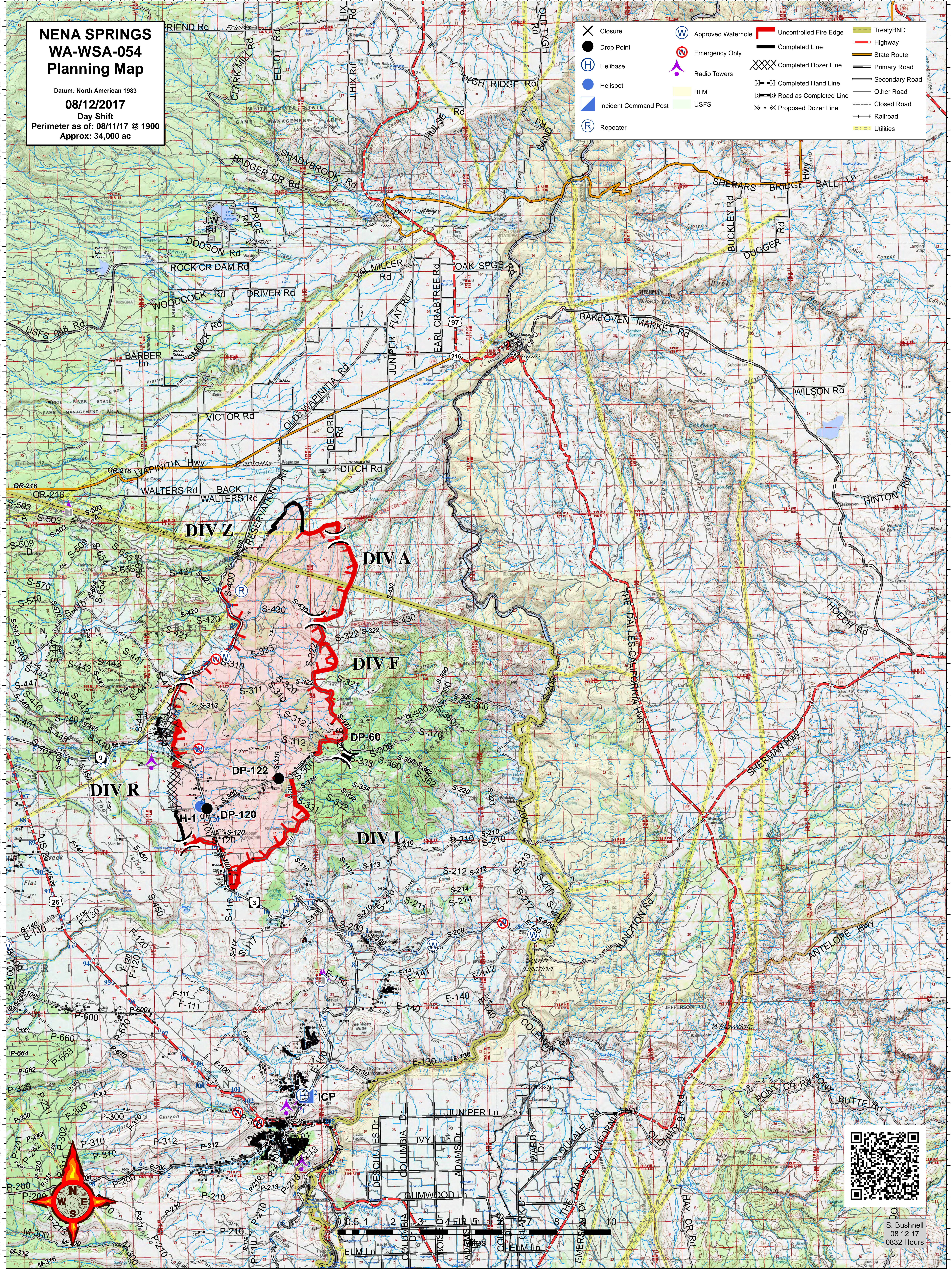
NENA SPRINGS WA-WSA-054 Planning Map

Datum: North American 1983

08/12/2017

Day Shift
Perimeter as of: 08/11/17 @ 1900
Approx: 34,000 ac

- X Closure
- Drop Point
- ⊕ Helibase
- ⊙ Helispot
- Ⓜ Incident Command Post
- Ⓜ Repeater
- Ⓜ Approved Waterhole
- Ⓜ Emergency Only
- Ⓜ Radio Towers
- Ⓜ BLM
- Ⓜ USFS
- Uncontrolled Fire Edge
- Completed Line
- Ⓜ Completed Dozer Line
- Ⓜ Completed Hand Line
- Ⓜ Road as Completed Line
- Ⓜ Proposed Dozer Line
- TreatyBND
- Highway
- State Route
- Primary Road
- Secondary Road
- Other Road
- Closed Road
- Railroad
- Utilities



S. Bushnell
08 12 17
0832 Hours