

Rebel Fire Operations Map

OR-WIF-170156

P6K807

8/11/2017, Day

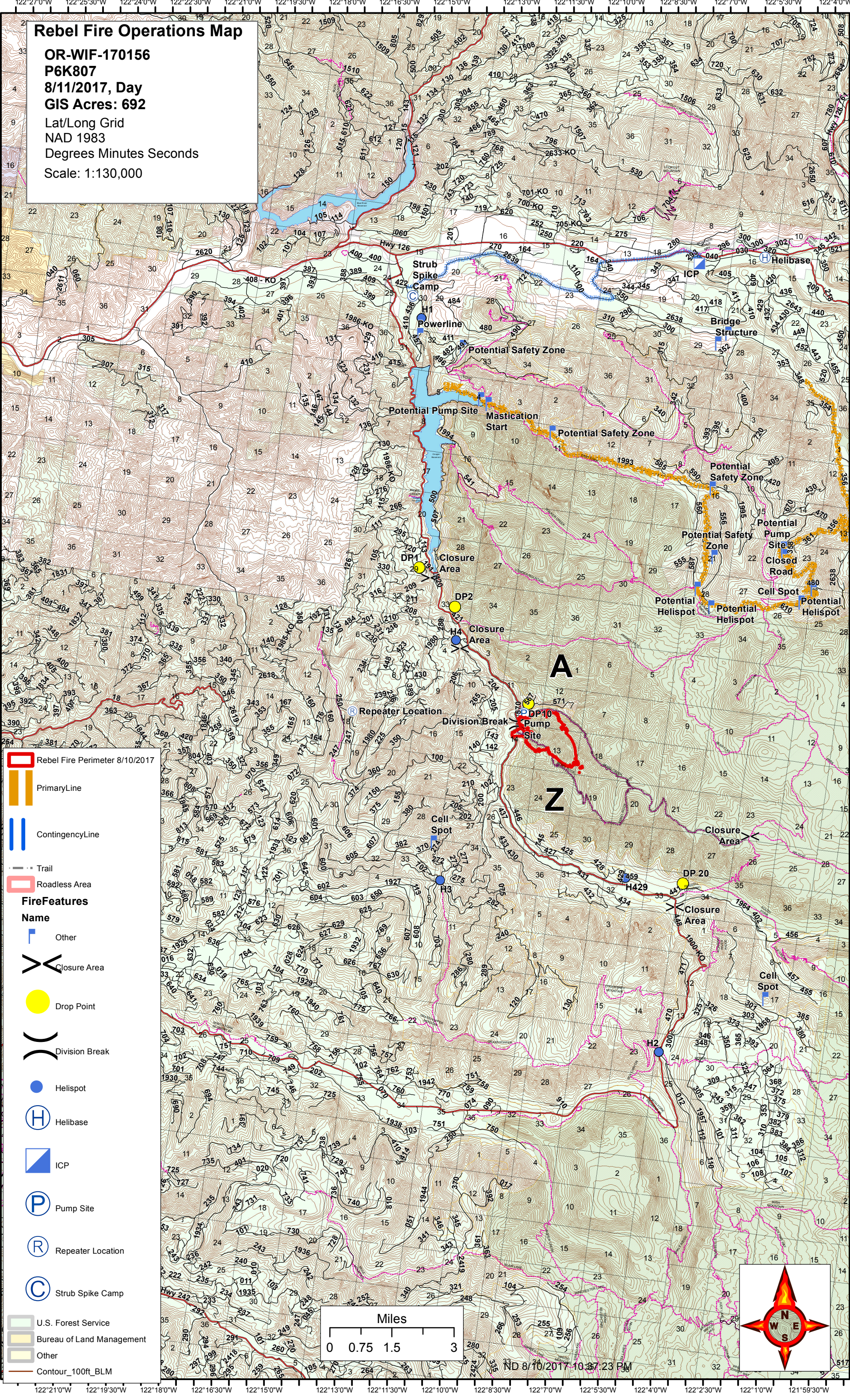
GIS Acres: 692

Lat/Long Grid

NAD 1983

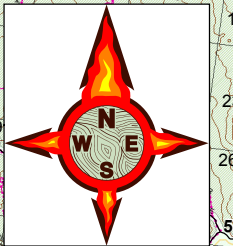
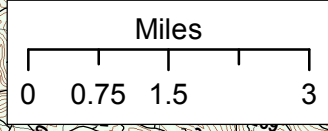
Degrees Minutes Seconds

Scale: 1:130,000



Legend

- Rebel Fire Perimeter 8/10/2017
- Primary Line
- Contingency Line
- Trail
- Roadless Area
- Fire Features**
- Name**
- Other
- Closure Area
- Drop Point
- Division Break
- Helispot
- Helibase
- ICP
- Pump Site
- Repeater Location
- Strub Spike Camp
- U.S. Forest Service
- Bureau of Land Management
- Other
- Contour_100ft_BLM



A

Z

ND 8/10/2017 10:37:23 PM