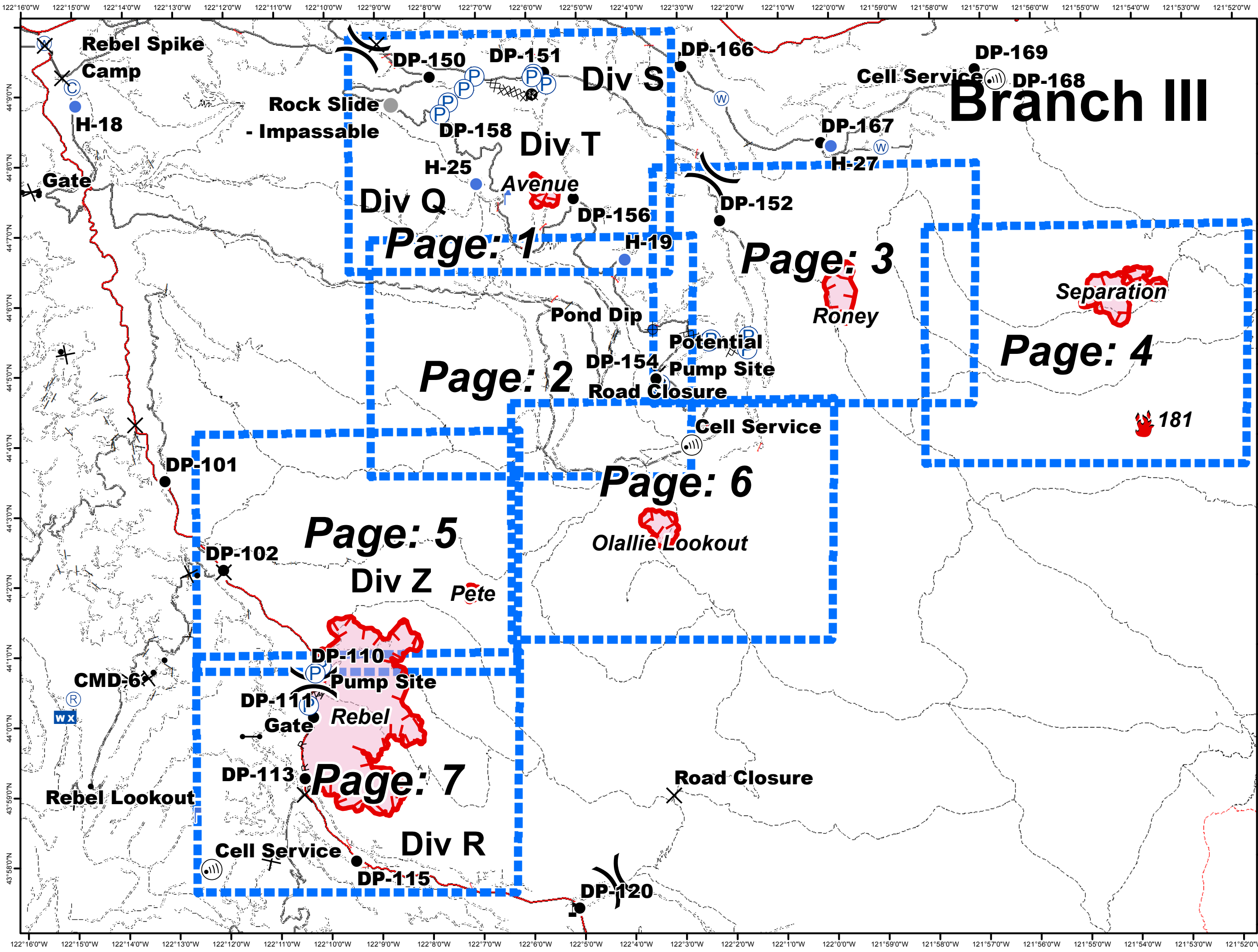


# Branch III



Page: 1

Page: 3

Page: 2

Page: 4

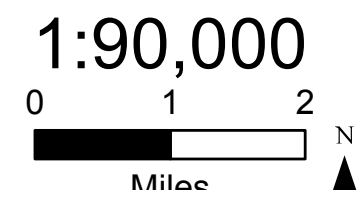
Page: 6

Page: 5

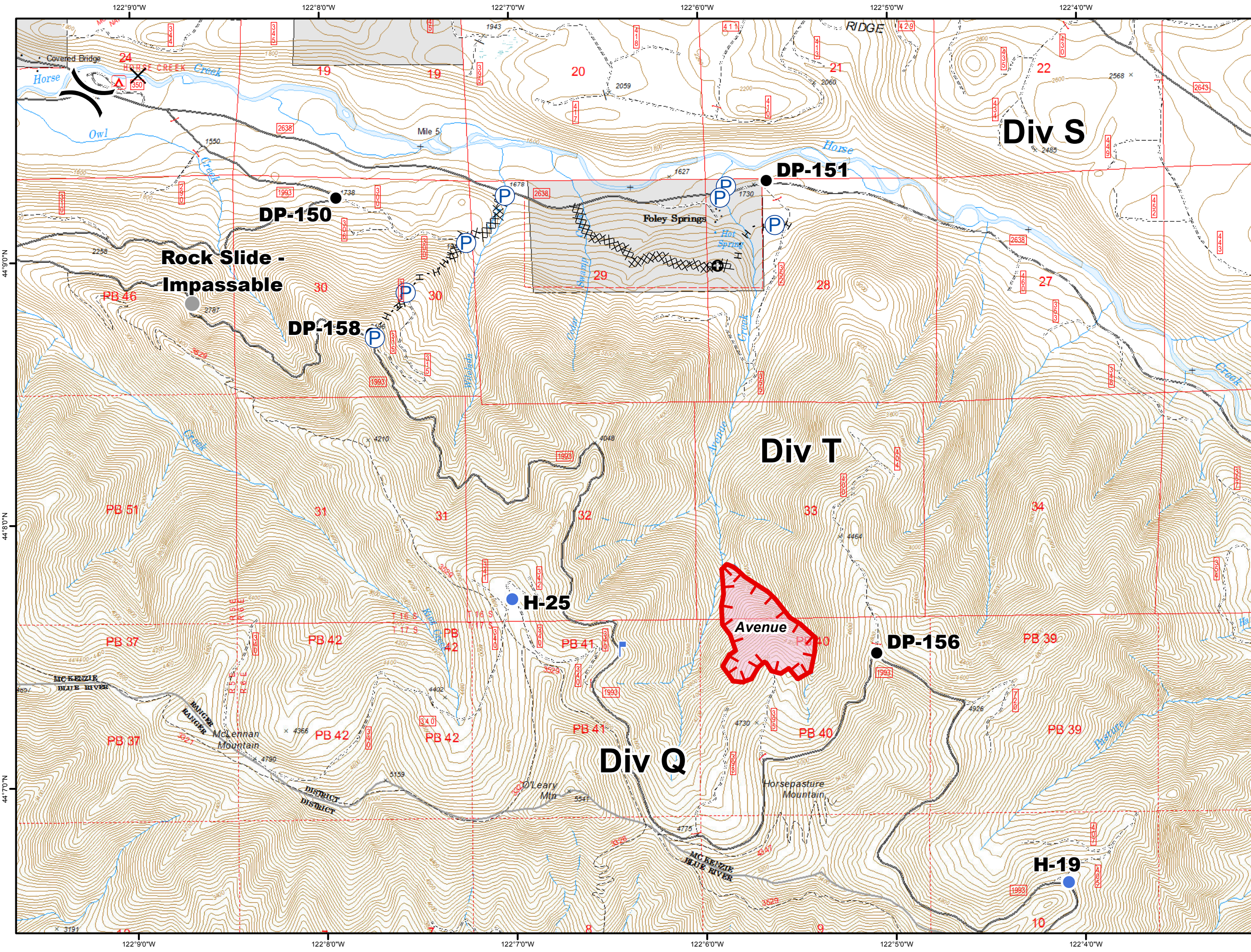
Page: 7

- Camp
- Closure
- Dip Site
- Drop Point
- Gate
- Helispot
- Internet Access
- Lookout
- Mobile Weather Unit
- Pump
- Repeater
- Water Source
- Value at Risk
- Other
- Division Break

- Uncontrolled Fire Edge
- Completed Dozer Line
- Completed Hand Line
- Road as Completed Line
- Proposed Dozer Line
- Other
- Fire Area



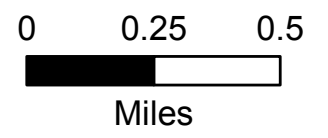
**Rebel Fire/Horse Creek  
Complex  
IAP  
Packet  
8/23/2017**



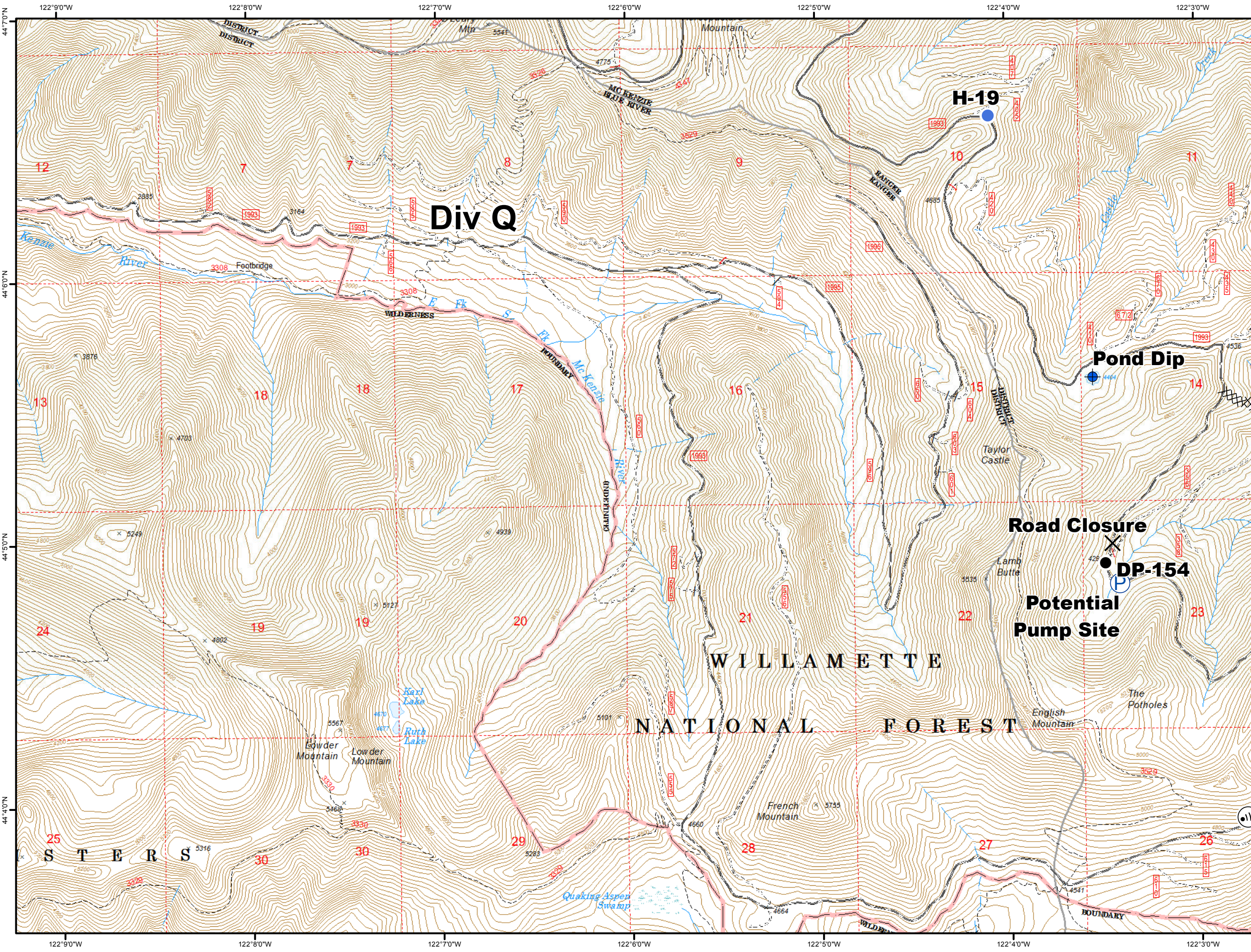
- X Closure
- Drop Point
- Helispot
- └ Lookout
- P Pump
- Other
- ) Division Break

- └ Uncontrolled Fire Edge
- XX Completed Dozer Line
- H Completed Hand Line
- ⊕ Other
- ▭ Fire Area

1:24,000



Rebel Fire/Horse Creek  
Complex  
IAP  
Packet  
8/23/2017



Div Q

H-19

Pond Dip

Road Closure

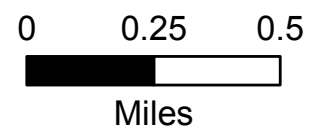
DP-154

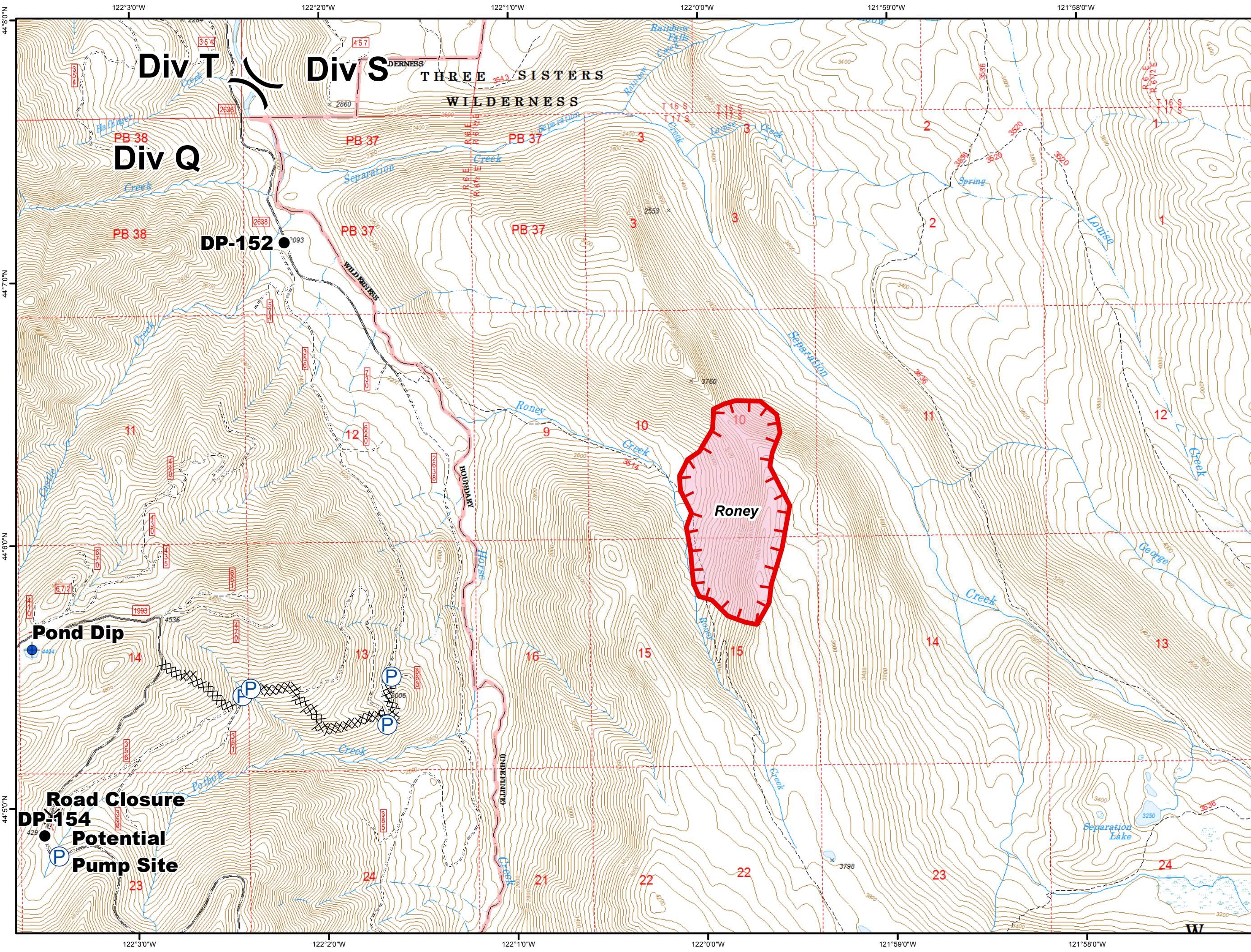
Potential  
Pump Site

WILLAMETTE  
NATIONAL FOREST

- X Closure
- Dip Site
- Drop Point
- Helispot
- Ⓜ Internet Access
- P Pump
- XX Completed Dozer Line

1:24,000



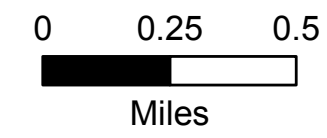


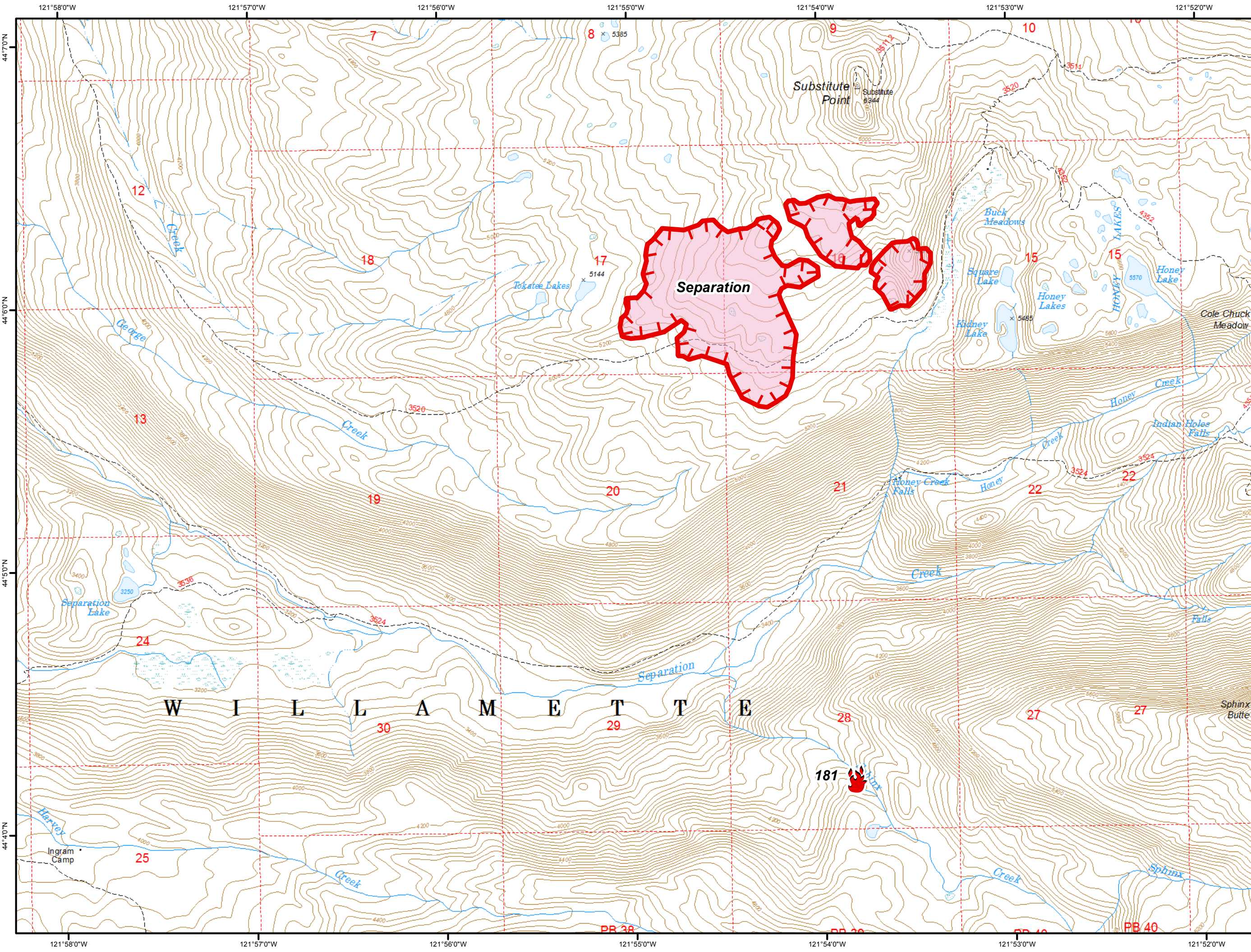
**Rebel Fire/Horse Creek  
Complex  
IAP  
Packet  
8/23/2017**

- Closure
- Dip Site
- Drop Point
- Pump
- Division Break

- Uncontrolled Fire Edge
- Completed Dozer Line
- Fire Area

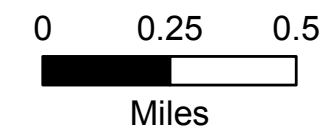
**1:24,000**

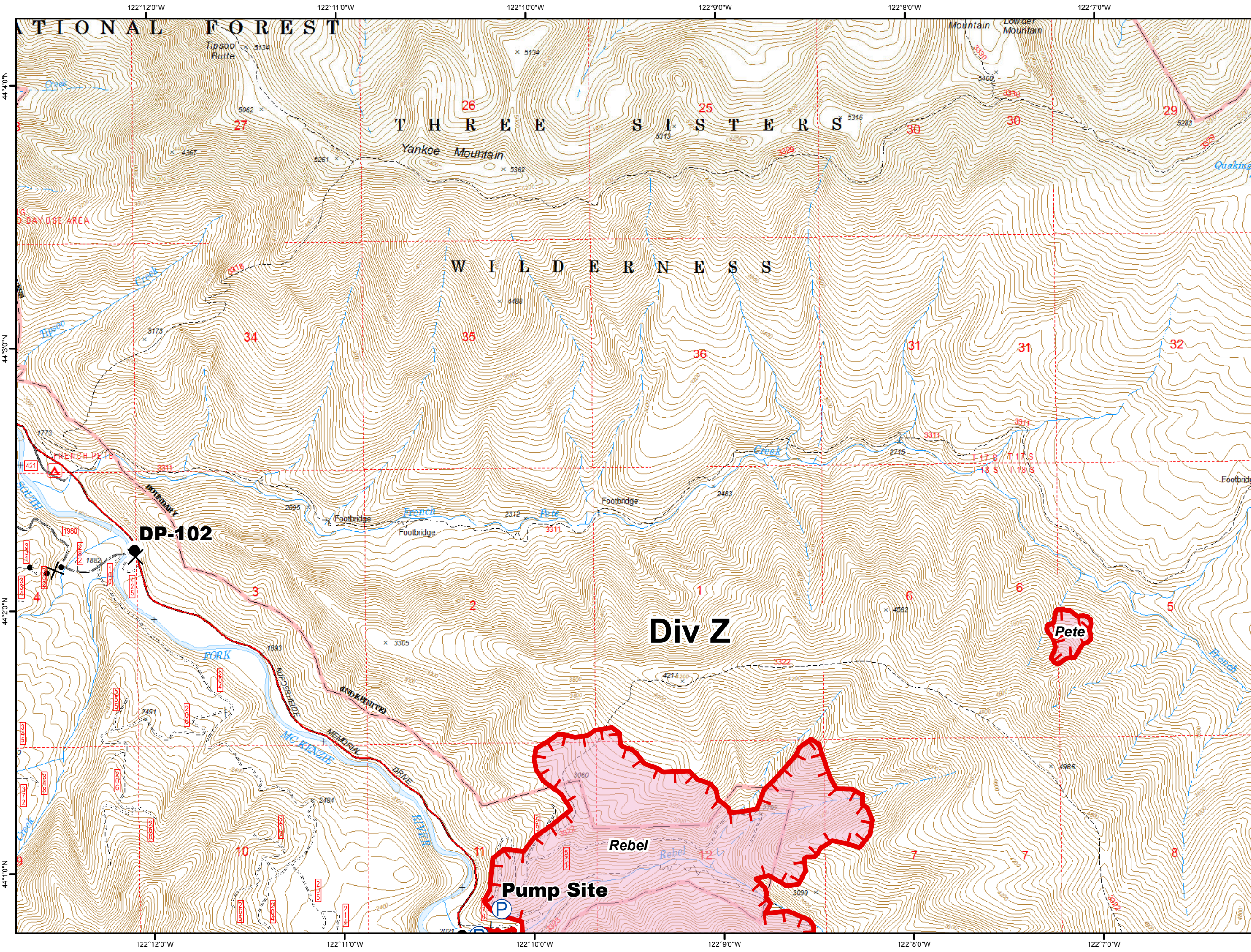




Uncontrolled Fire Edge  
Fire Area

1:24,000

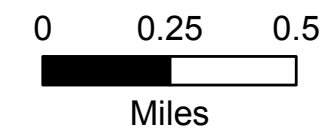


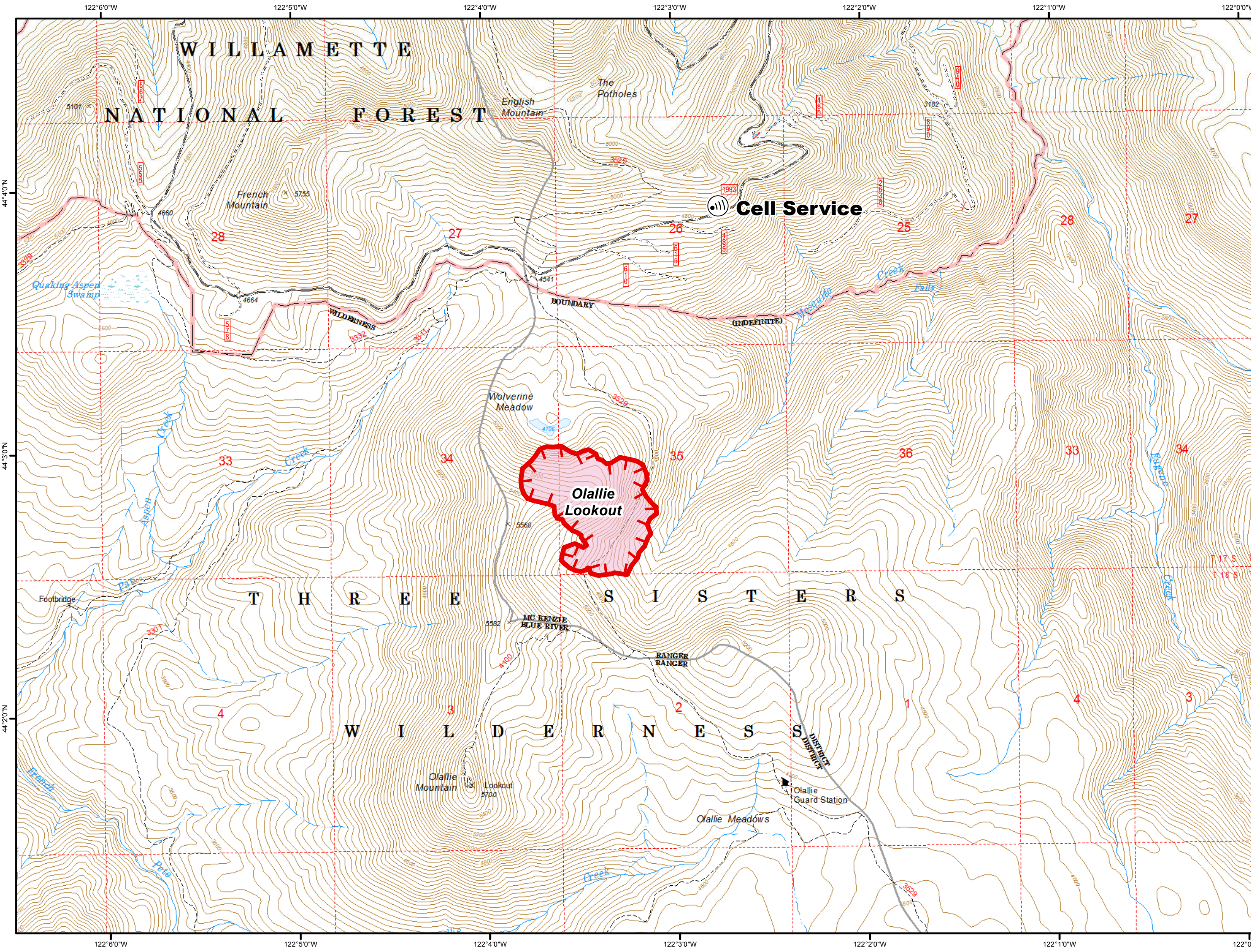


**Rebel Fire/Horse Creek  
Complex  
IAP  
Packet  
8/23/2017**

- Closure
- Drop Point
- Pump
- Water Source
- Uncontrolled Fire Edge
- Proposed Dozer Line
- Fire Area

**1:24,000**

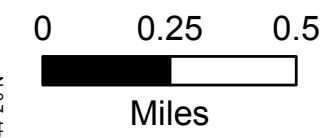




**Rebel Fire/Horse Creek  
Complex  
IAP  
Packet  
8/23/2017**

-  Internet Access
-  Uncontrolled Fire Edge
-  Fire Area

**1:24,000**



Rebel Fire/Horse Creek  
Complex  
IAP  
Packet  
8/23/2017

- X Closure
- Drop Point
- Gate
- Ⓜ Internet Access
- 🏠 Lookout
- Ⓟ Pump
- ) Division Break

- 🔴 Uncontrolled Fire Edge
- XX Completed Dozer Line
- H Completed Hand Line
- R Road as Completed Line
- X Proposed Dozer Line
- 🔴 Fire Area

1:24,000

