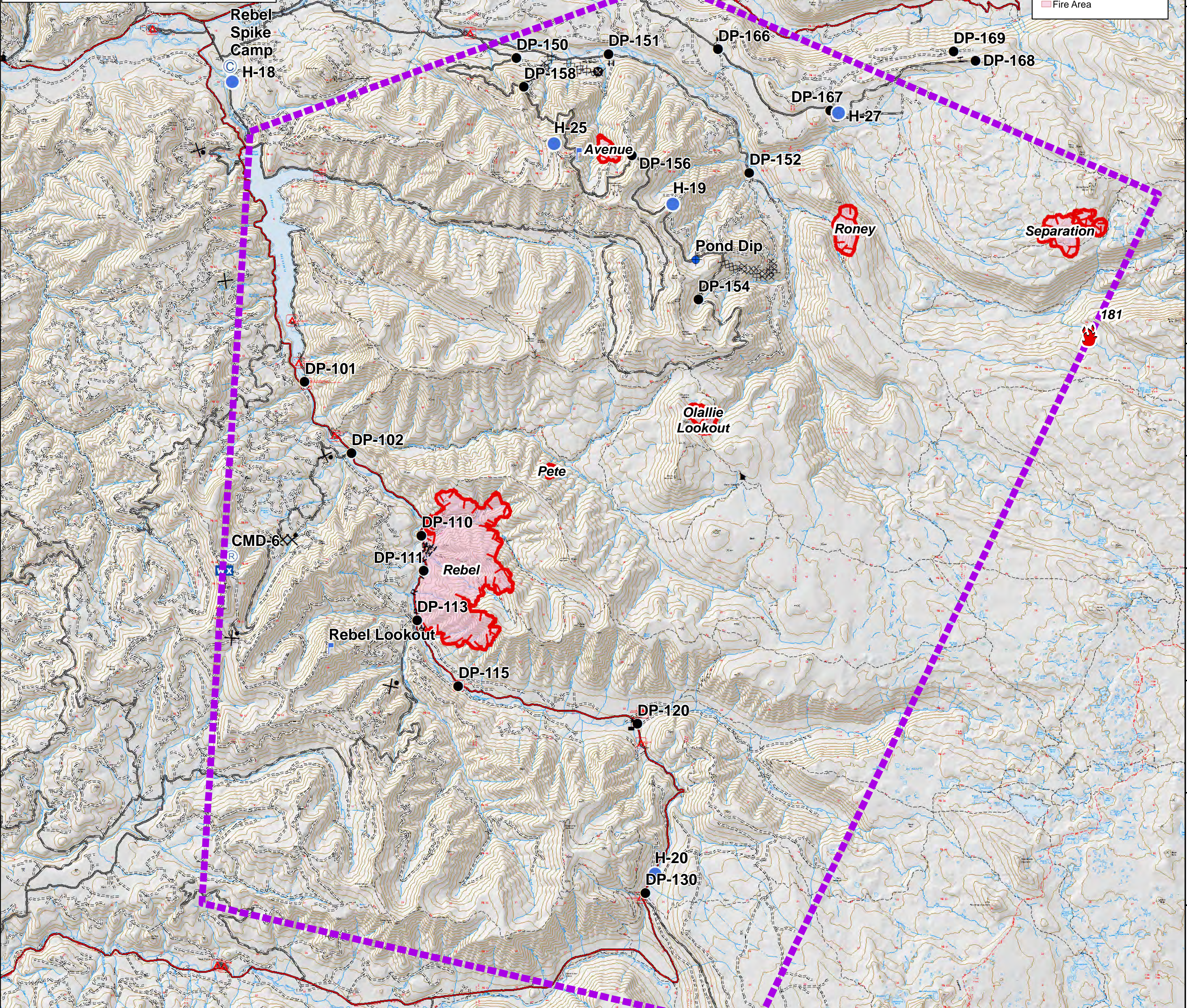


**Rebel Fire**  
**OR-WIF-170156**  
**Horse Creek Complex**  
**OR-WIF-170234**  
**Pilot's Map**  
**August 23, 2017**  
**Rebel: 2,605 Acres**  
**Avenue: 76 Acres**  
**Olallie Lookout: 129 Acres**  
**Separation: 322 Acres**  
**Roney: 204 Acres**  
**Pete: 16 Acres**



- TFR 7/6524
- Camp
- Dip Site
- Drop Point
- Helispot
- Lookout
- Mobile Weather Unit
- Repeater
- Value at Risk
- Uncontrolled Fire Edge
- Completed Dozer Line
- Completed Hand Line
- Road as Completed Line
- Proposed Dozer Line
- Other
- Fire Area



Label	LatWGS84	LongWGS84
Rebel Spike Camp	N44 9.139	W122 14.998
Pond Dip	N44 5.606	W122 3.550
DP-101	N44 3.503	W122 13.228
DP-102	N44 2.228	W122 12.087
DP-110	N44 0.750	W122 10.383
DP-111	N44 0.118	W122 10.335
DP-113	N43 59.244	W122 10.515
DP-115	N43 58.060	W122 9.512
DP-120	N43 57.357	W122 5.112
DP-130	N43 54.343	W122 4.964
DP-150	N44 9.236	W122 7.918
DP-151	N44 9.285	W122 5.645
DP-152	N44 7.143	W122 2.194
DP-154	N44 4.896	W122 3.492
DP-156	N44 7.483	W122 5.089

DP-158	N44 8.719	W122 7.738
DP-165	N44 10.306	W122 5.526
DP-166	N44 9.350	W122 2.930
DP-167	N44 8.235	W122 0.178
DP-168	N44 9.092	W121 56.575
DP-169	N44 9.261	W121 57.112
H-18	N44 8.865	W122 14.942
H-19	N44 6.603	W122 4.089
H-20	N43 54.680	W122 4.720
H-25	N44 7.702	W122 7.011
H-27	N44 8.190	W121 59.976
Rebel Lookout	N43 58.741	W122 12.699
Mobile Weather Unit	N44 0.150	W122 15.251
CMD-6	N44 0.411	W122 15.075
RBL CMD-7	N44 12.752	W122 6.111

