



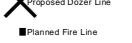







Rebel Fire/Horse Creek Complex IAP Index August 28, 2017


-  Camp
-  Closure
-  Dip Site
-  Drop Point
-  Fire Location
-  Gate
-  Helispot
-  IR Isolated Heat Source
-  Internet Access
-  Lookout
-  Mobile Weather Unit
-  Pump
-  Repeater
-  Safety Zone
-  Water Source
-  Value at Risk
-  Division Break

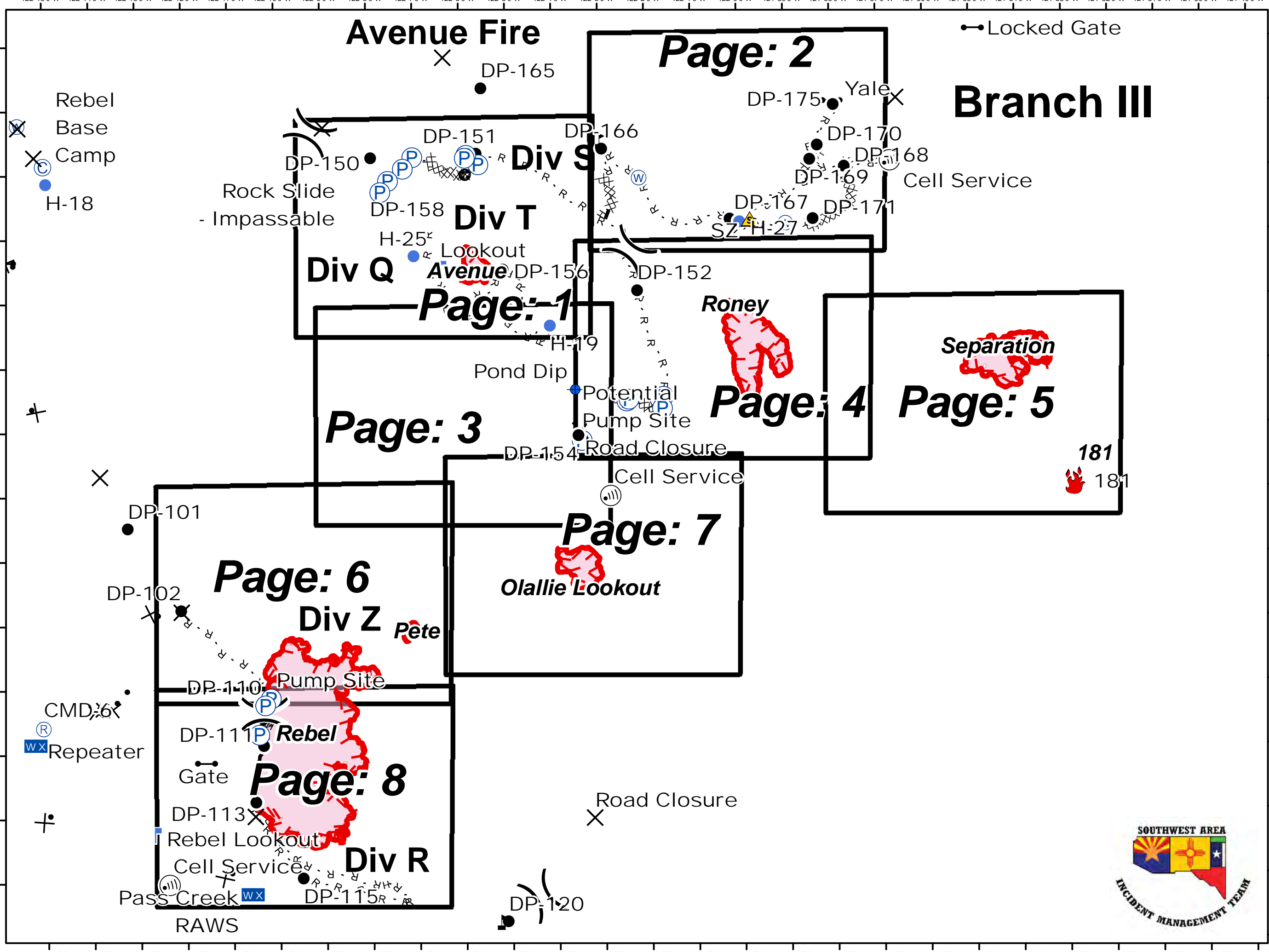
-  Uncontrolled Fire Edge
-  Completed Line
-  Completed Dozer Line
-  Completed Hand Line
-  Road as Completed Line
-  Proposed Dozer Line
-  Planned Fire Line
-  Dozer
-  Fire Area

1:100,000

0 1 2

Miles





122°15'0"W 122°14'0"W 122°13'0"W 122°12'0"W 122°11'0"W 122°10'0"W 122°9'0"W 122°8'0"W 122°7'0"W 122°6'0"W 122°5'0"W 122°4'0"W 122°3'0"W 122°2'0"W 122°1'0"W 122°0'0"W 121°59'0"W 121°58'0"W 121°57'0"W 121°56'0"W 121°55'0"W 121°54'0"W 121°53'0"W 121°52'0"W 121°51'0"W 121°50'0"W 121°49'0"W

44°11'0"N 44°10'0"N 44°9'0"N 44°8'0"N 44°7'0"N 44°6'0"N 44°5'0"N 44°4'0"N 44°3'0"N 44°2'0"N 44°1'0"N 44°0'0"N 43°59'0"N 43°58'0"N

Rebel Fire Horse Creek Complex

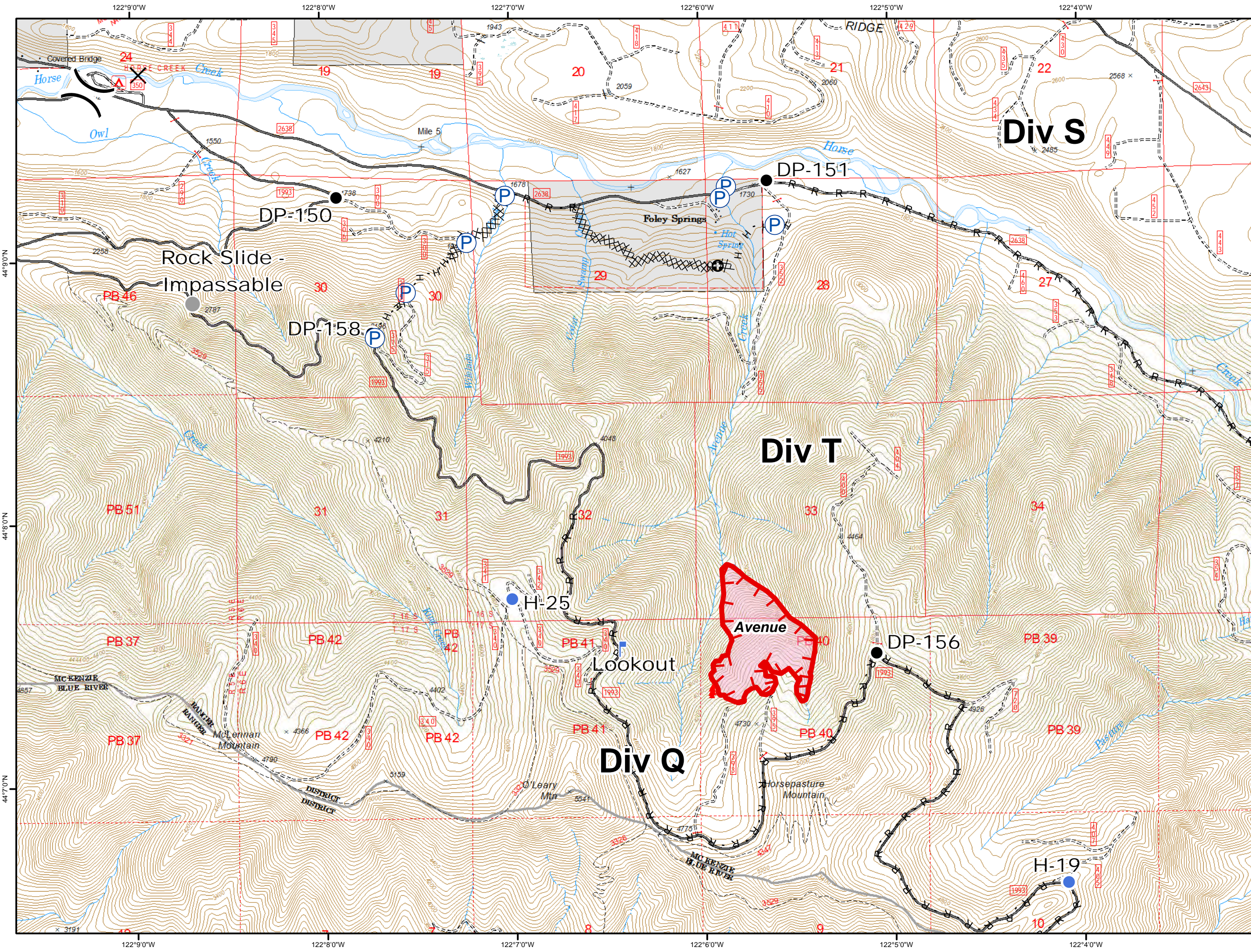
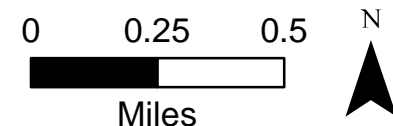
IAP Packet

August 28, 2017

- IR Isolated Heat Source
- Lookout
- Pump
- Other
- Division Break

- Uncontrolled Fire Edge
- Completed Dozer Line
- Completed Hand Line
- Road as Completed Line
- Other
- Fire Area

1:24,000

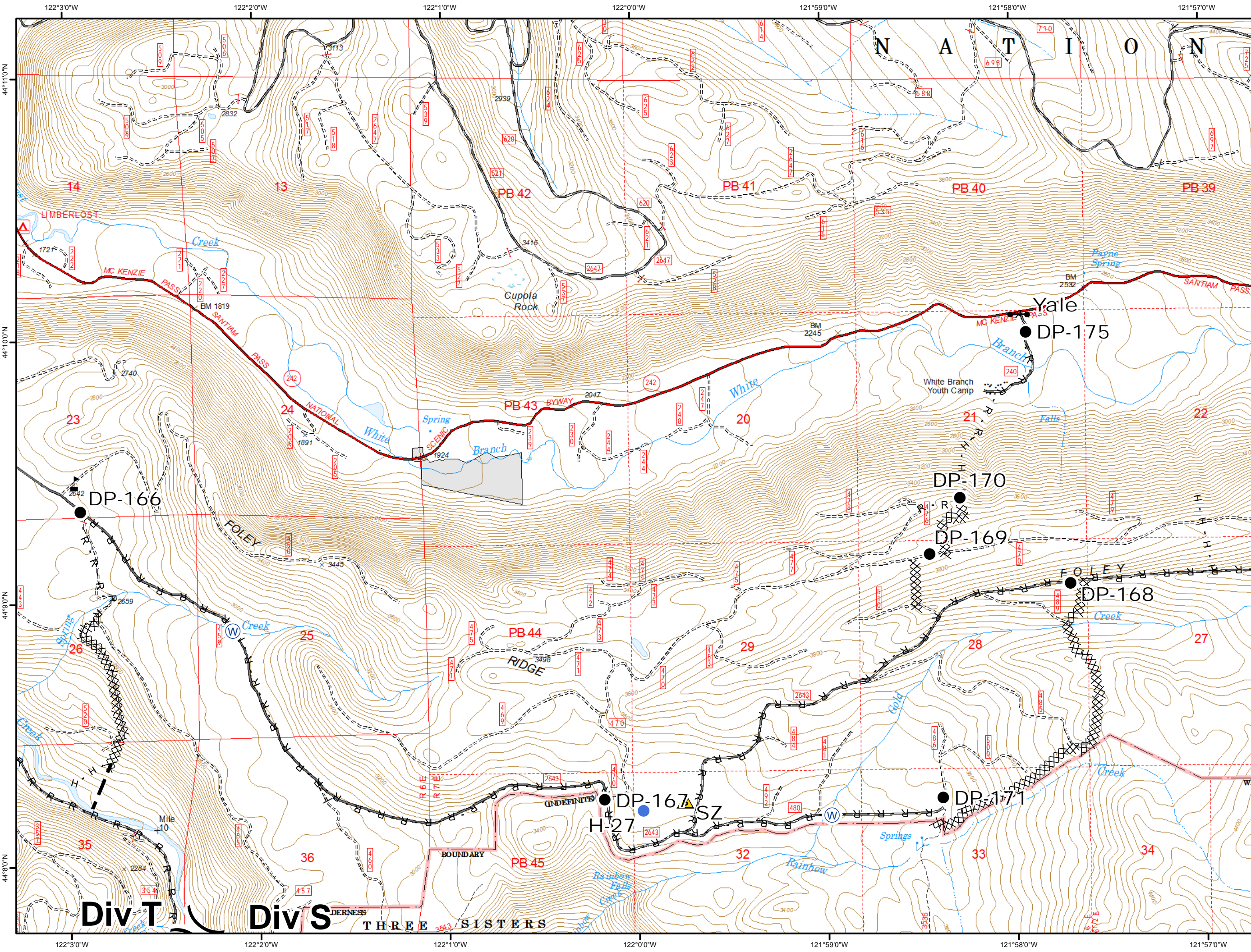
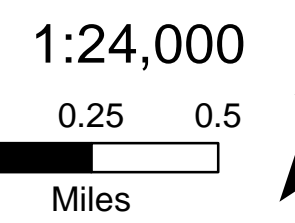


Rebel Fire Horse Creek Complex IAP Packet

August 28, 2017

- Drop Point
- Gate
- Helispot
- Safety Zone
- Water Source
- Value at Risk
- Division Break

- Completed Dozer Line
- Completed Hand Line
- Road as Completed Line
- Planned Fire Line

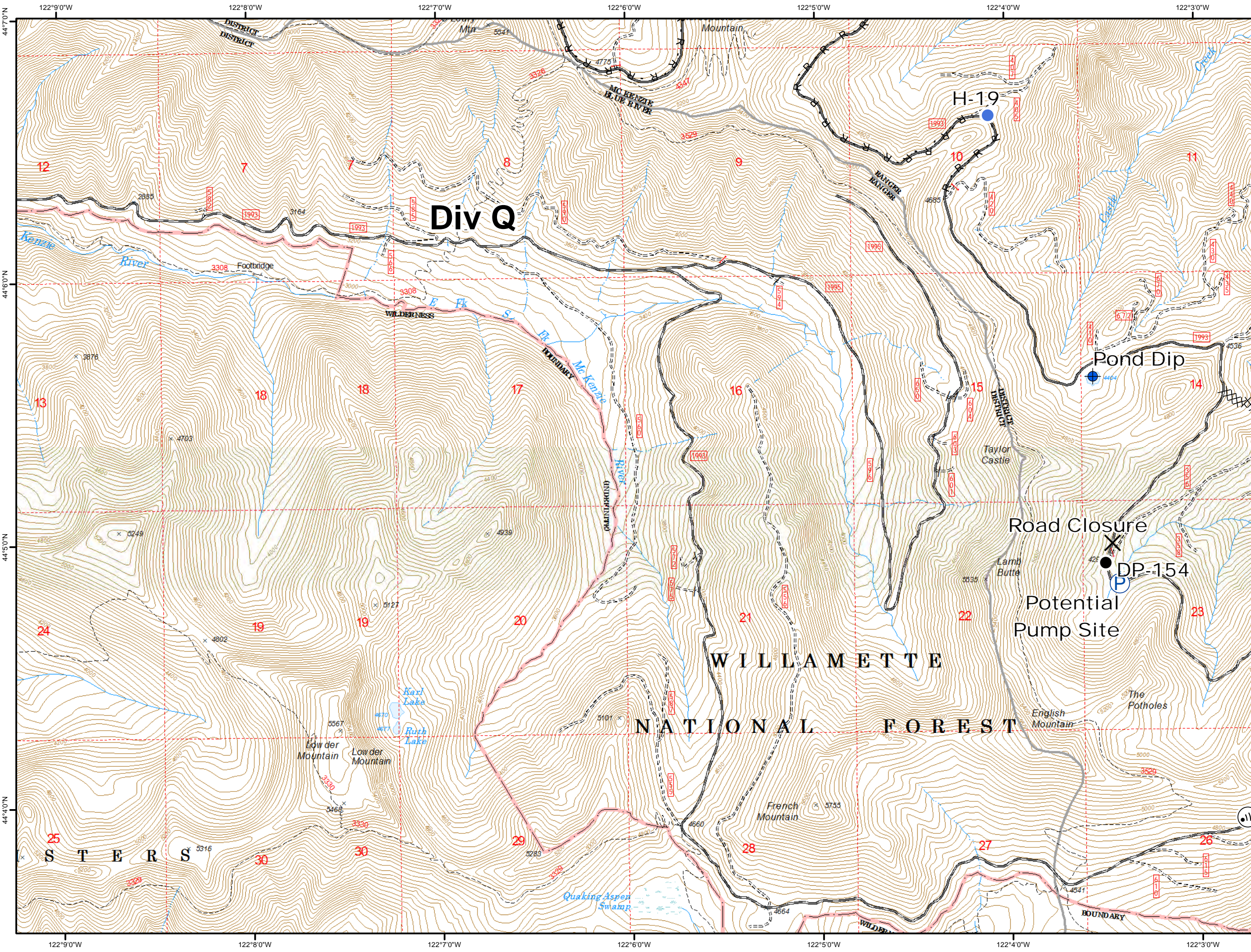
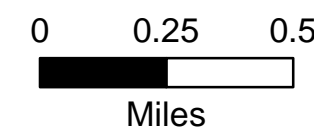


Div T Div S THREE SISTERS

Rebel Fire
Horse Creek Complex
IAP
Packet
August 28, 2017

- X Closure
- Dip Site
- Drop Point
- Helispot
- Ⓜ Internet Access
- P Pump
- XX Completed Dozer Line
- R Road as Completed Line

1:24,000



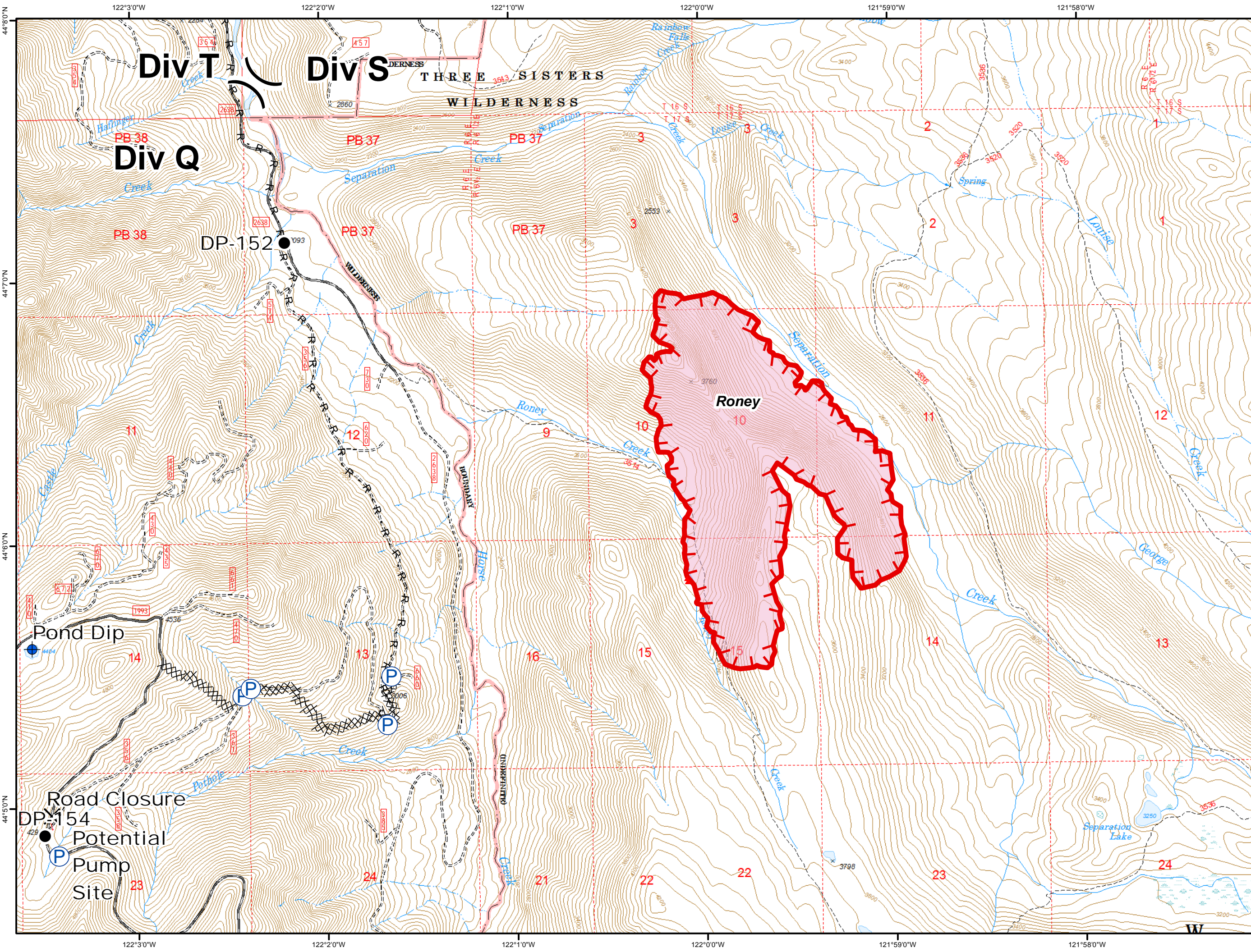
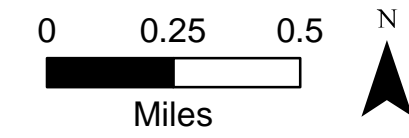
Rebel Fire Horse Creek Complex IAP Packet

August 28, 2017

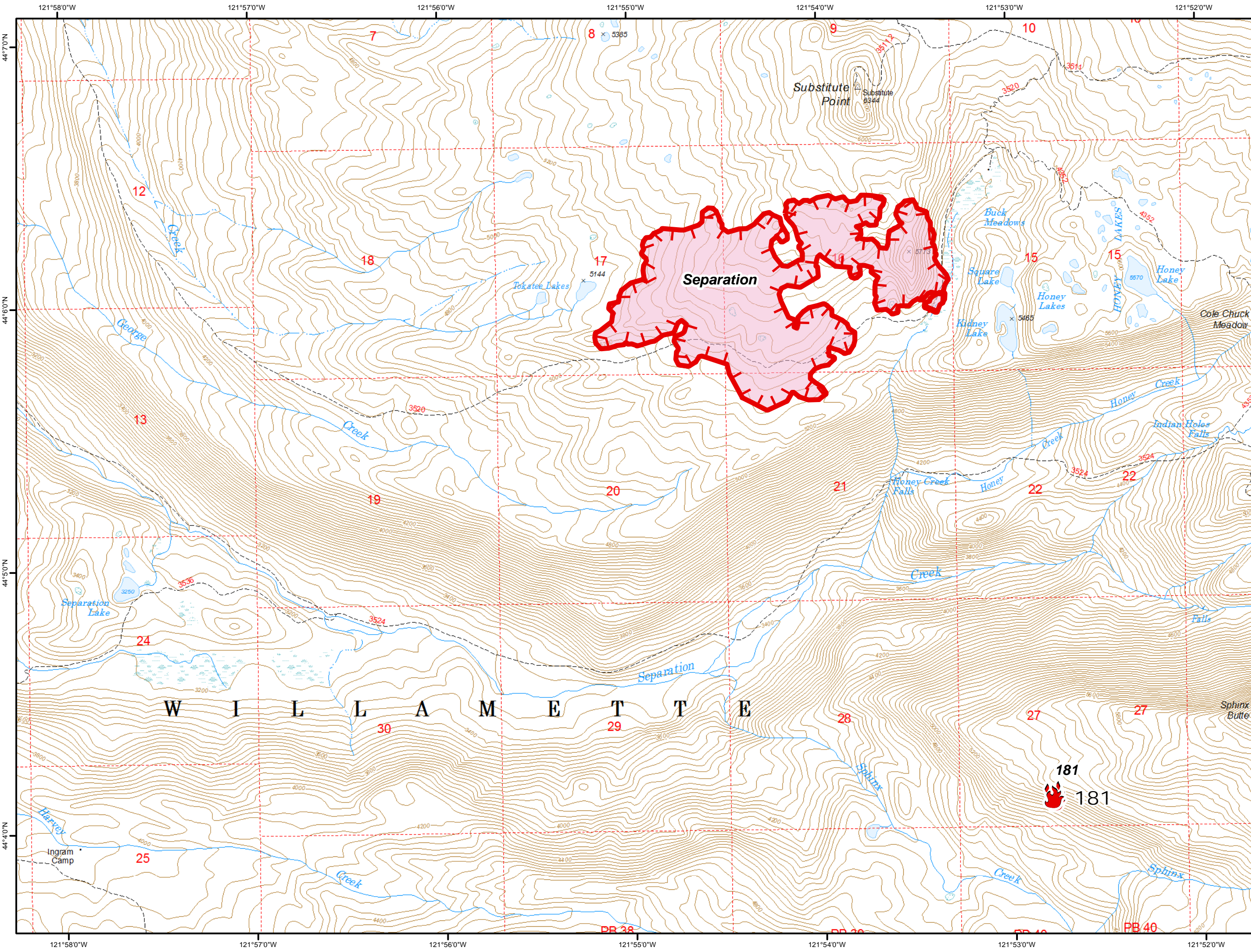
- Closure
- Dip Site
- Drop Point
- IR Isolated Heat Source
- Pump
- Division Break

- Uncontrolled Fire Edge
- Completed Dozer Line
- Road as Completed Line
- Fire Area

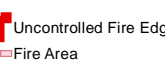
1:24,000



**Rebel Fire
Horse Creek Complex
IAP
Packet
August 28, 2017**

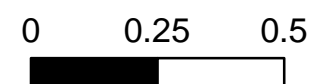


Fire Location



Uncontrolled Fire Edge
Fire Area

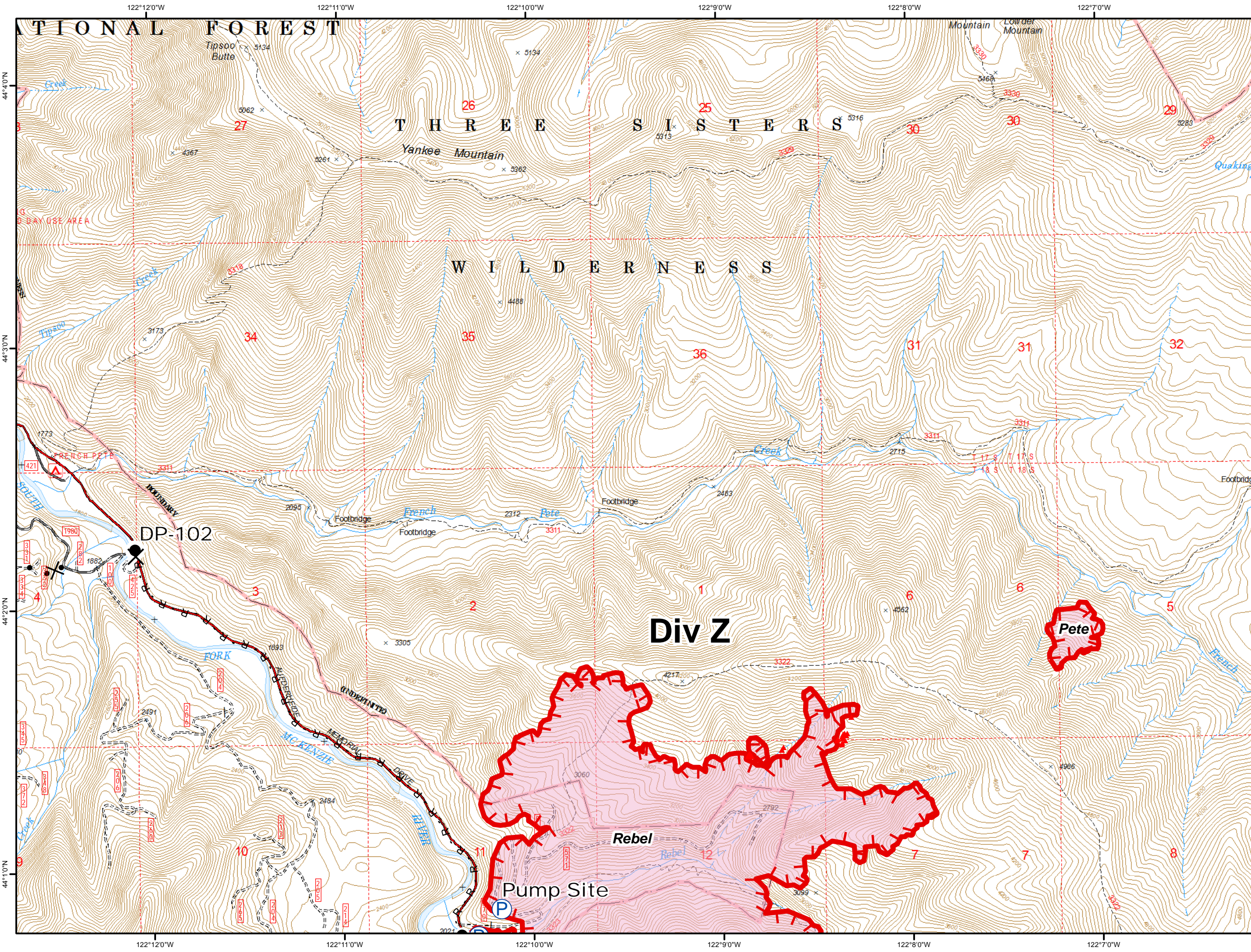
1:24,000



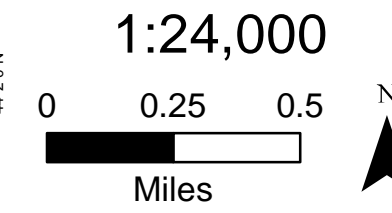
Miles



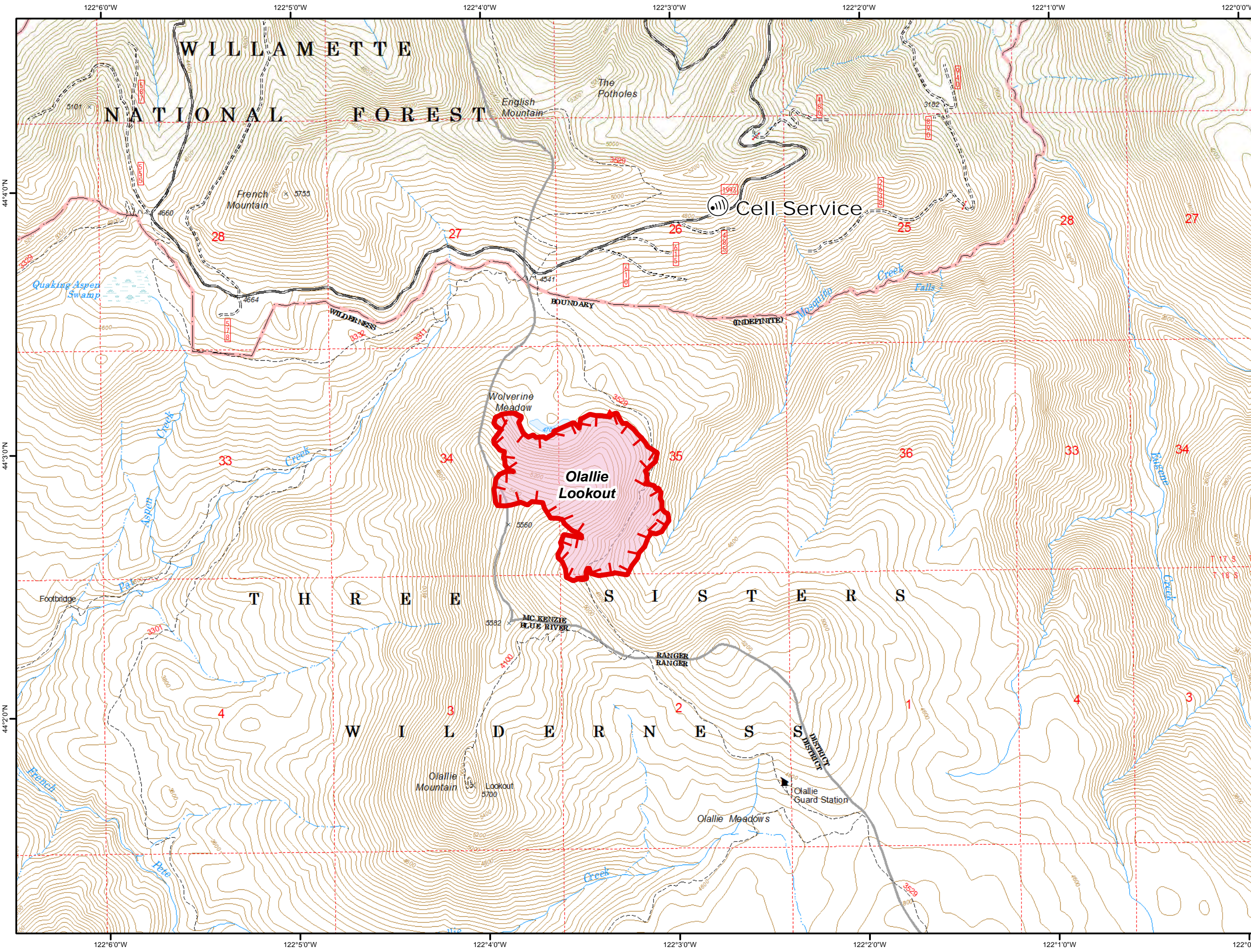
**Rebel Fire
Horse Creek Complex
IAP
Packet
August 28, 2017**



- Closure
- Drop Point
- IR Isolated Heat Source
- Pump
- Water Source
- Uncontrolled Fire Edge
- Road as Completed Line
- Proposed Dozer Line
- Fire Area



**Rebel Fire
Horse Creek Complex
IAP
Packet
August 28, 2017**

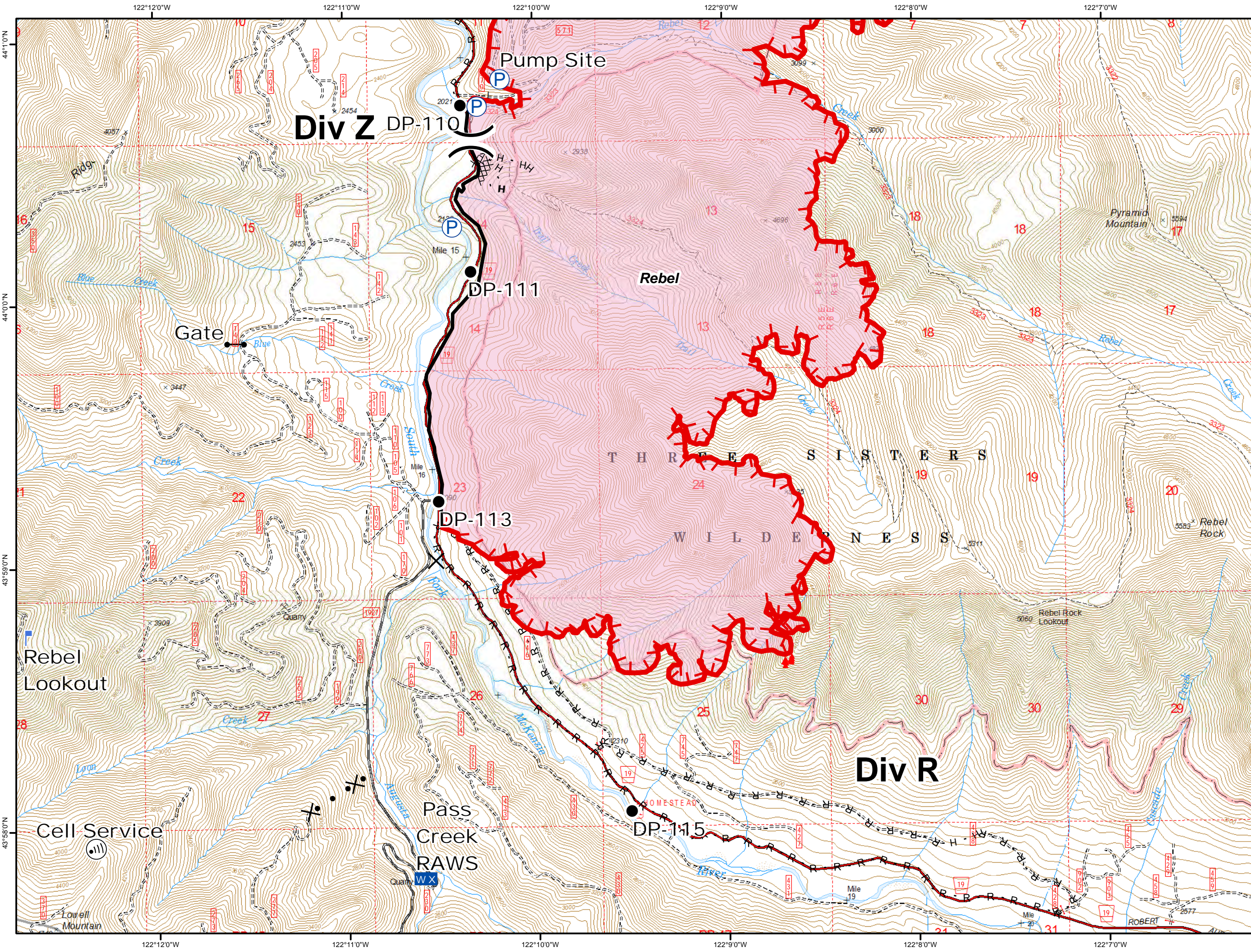


1:24,000

0 0.25 0.5

Miles





Rebel Fire Horse Creek Complex

AP Point
Gate
Packet
Heat Source
August 28, 2017

- Lookout
- Mobile Weather Unit
- Pump
- Division Break

- Uncontrolled Fire Edge
- Completed Line
- Completed Dozer Line
- Completed Hand Line
- Road as Completed Line
- Proposed Dozer Line
- Fire Area

