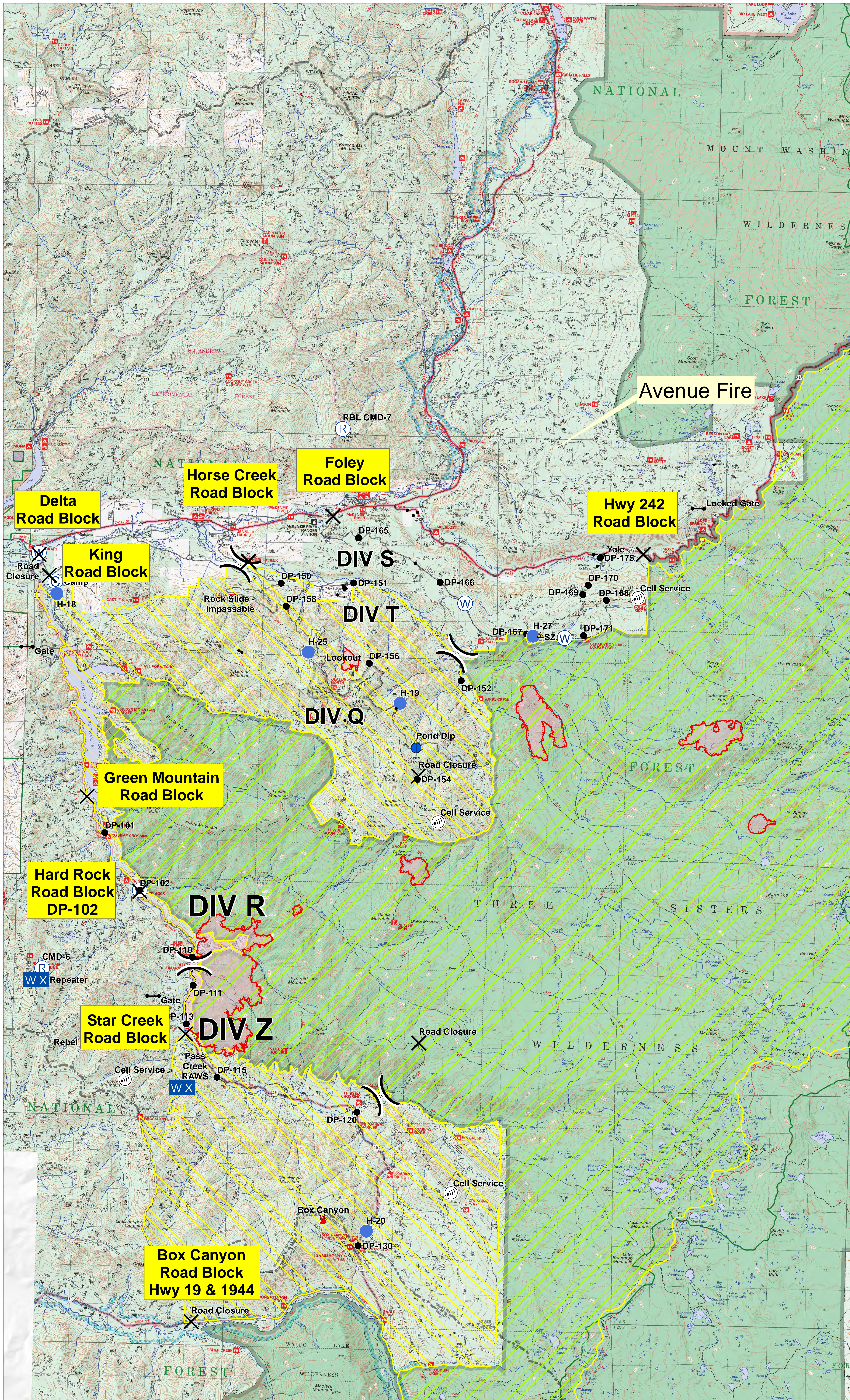


Horse Creek Complex, Rebel and Vicinity Fires Area and Road Closure Map

OR-WIF
August 27, 2017



- ◆ Structures
- ⊙ Camp
- ✕ Closure
- ⊕ Dip Site
- Drop Point
- 🔥 Fire Location
- Gate
- Helispot
- IR Isolated Heat Source
- ⊙ Internet Access
- ⊙ Mobile Weather Unit
- ⊙ Repeater
- ⚠ Safety Zone
- ⊙ Water Source
- ⋮ Value at Risk
- Other
-) Division Break
- ▬ Uncontrolled Fire Edge
- Completed Line
- ⊘ Completed Dozer Line
- Completed Hand Line
- Road as Completed Line
- ⊘-⊘ Proposed Dozer Line
- - - Planned Fire Line
- Other
- ▭ ThreeSistersWildernessClosureArea
- ▭ RebelFireClosureArea
- ▭ Fire Area

