

Whitewater, French, Little Devil Fires IAP

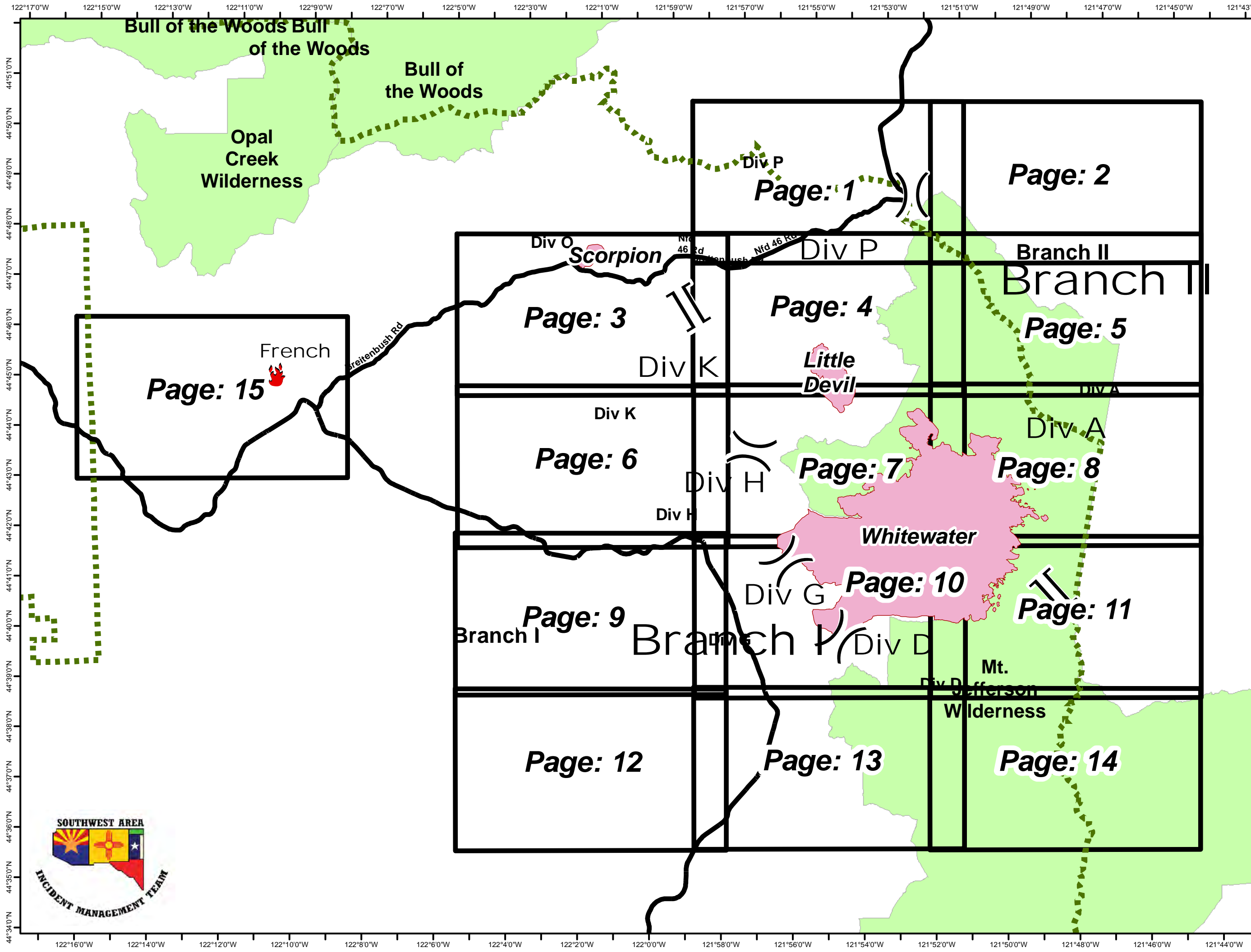
September 1, 2017

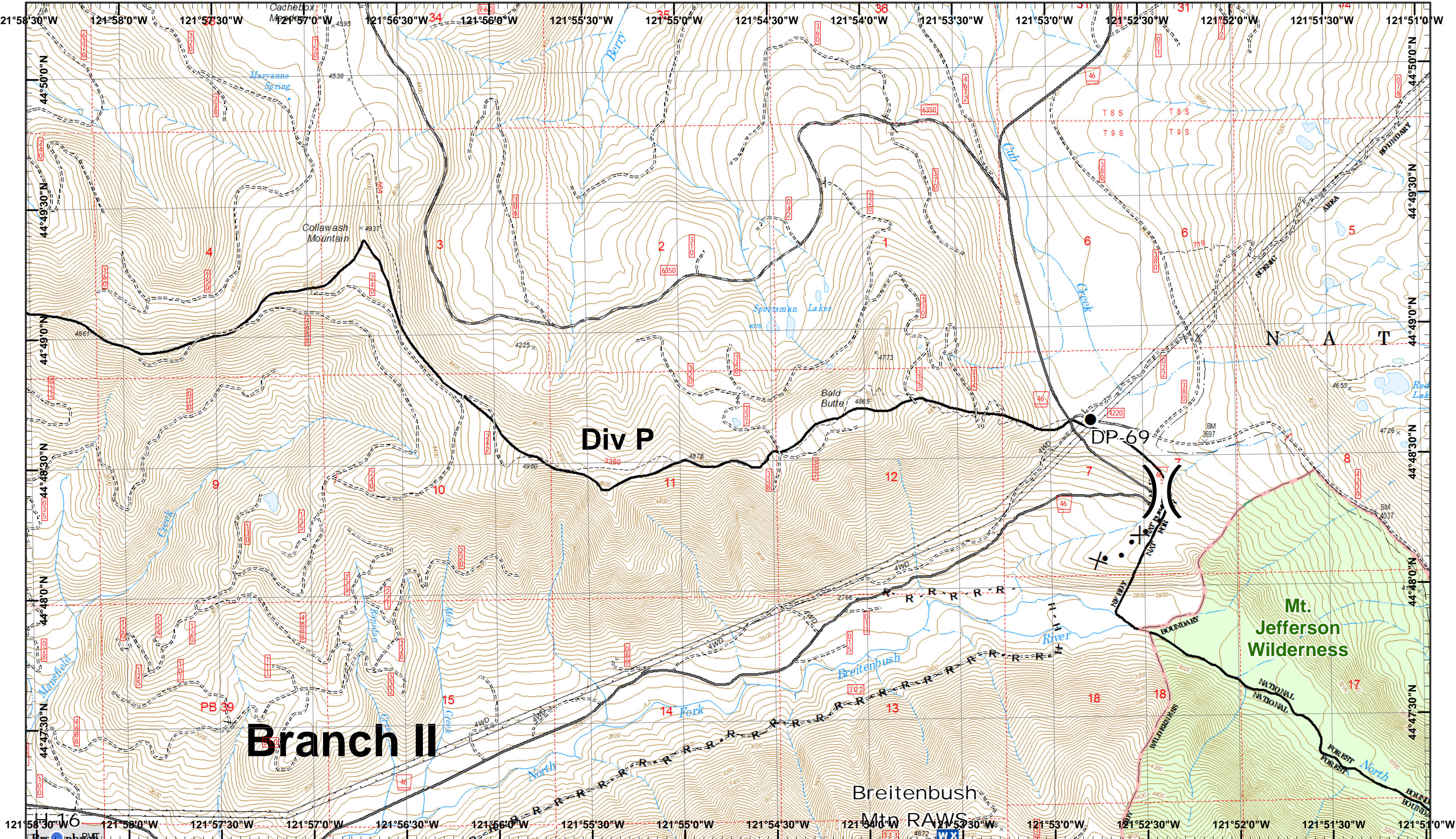
- Camp
- Closure
- Dip Site
- Drop Point
- Gate
- Helispot
- IR Isolated Heat Source
- Internet Access
- Lookout
- Mobile Weather Unit
- Pump
- Repeater
- Safety Zone
- Water Source
- Value at Risk

- Uncontrolled Fire Edge
- Completed Line
- Completed Dozer Line
- Completed Hand Line
- Road as Completed Line
- Proposed Dozer Line
- Planned Fire Line
- Other

1:125,553

Miles



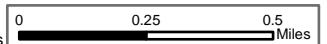


Whitewater Incident
 September 1, 2017

IR 8/31/2017 @ 0241
 Whitewater Fire - 10,407 Acres
 Little Devil Fire - 582 Acres
 French Fire - 2 Acres
 Scorpion Fire - 169 Acres
 Map Created 8/31/2017 8:15:23 PM RDC



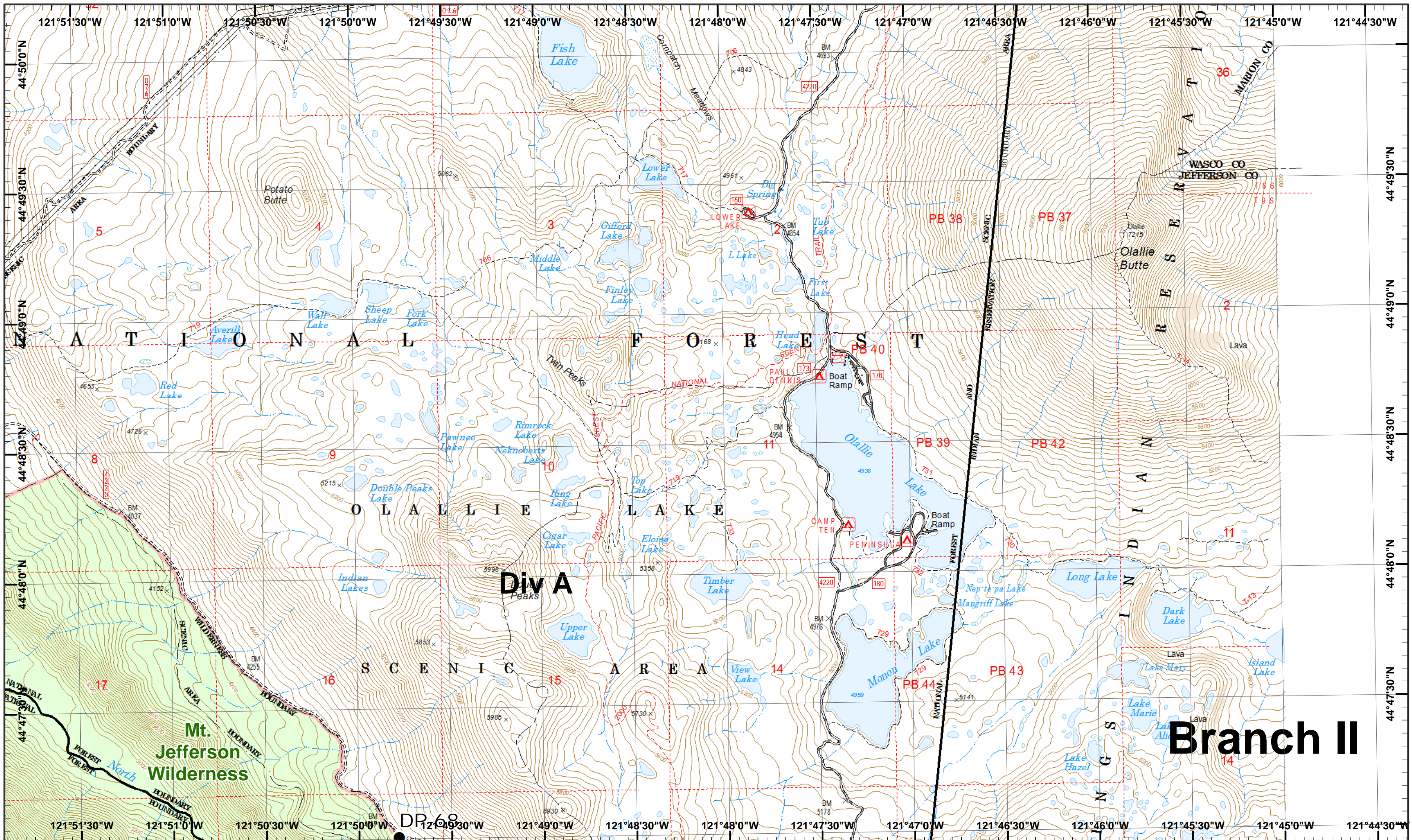
- Drop Point
- W X Mobile Weather
- R - Road as Line
- X • Proposed Dozer
- Helispot
- H - Completed Hand



1	2
3	4
5	6
7	8
9	10
11	12
13	14

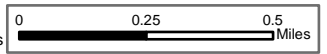
Page 1
)(Division
)(Branch





Whitewater Incident
 September 1, 2017

IR 8/31/2017 @ 0241
 Whitewater Fire - 10,407 Acres
 Little Devil Fire - 582 Acres
 French Fire - 2 Acres
 Scorpion Fire - 169 Acres



● Drop Point Ⓜ Water Source

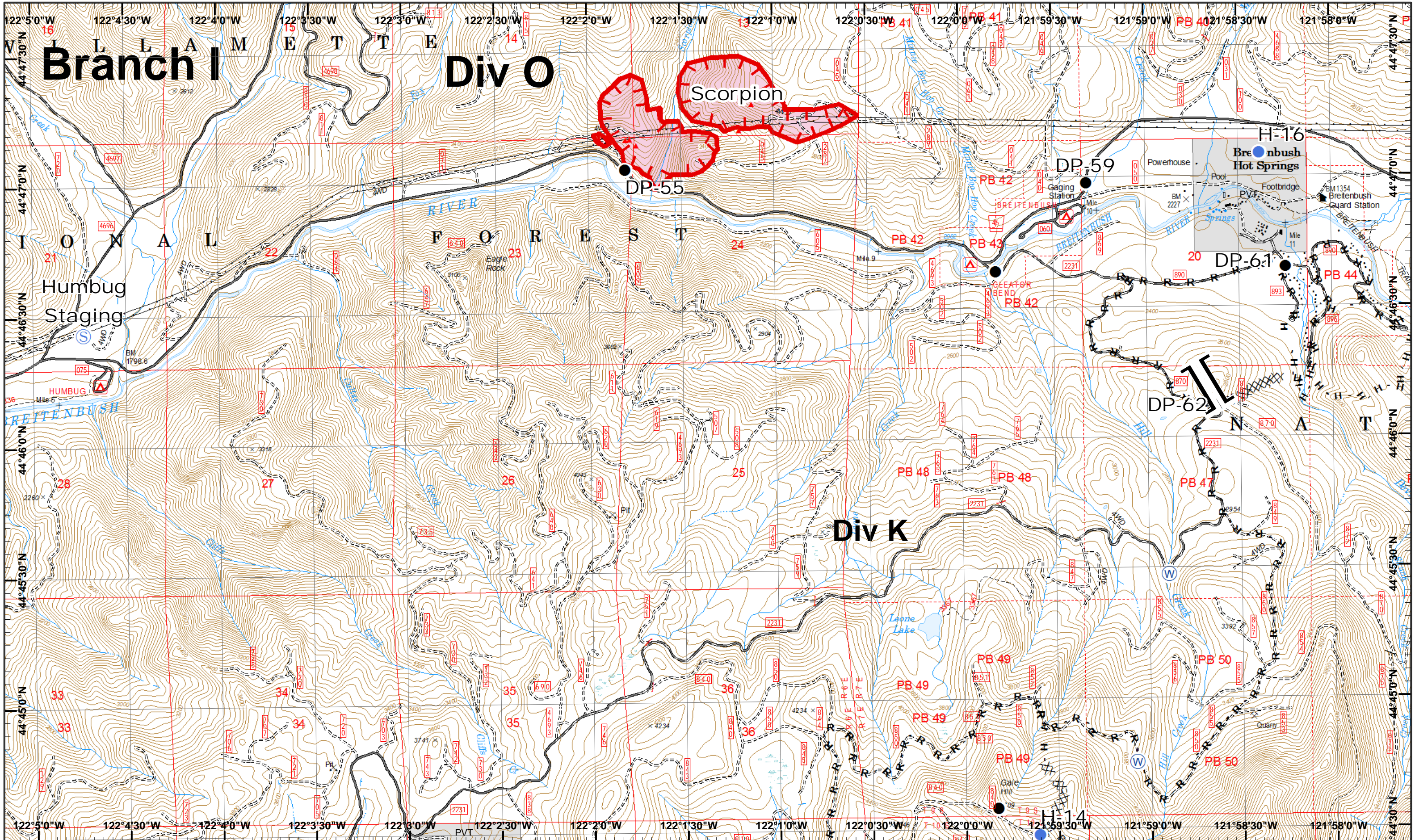
Map Created 8/31/2017 8:16:44 PM RDC



1	2
3	4
5	6
7	8
9	10
11	12
13	14

Page 2
)(Division
)(Branch





Whitewater Incident
 September 1, 2017

IR 8/31/2017 @ 0241
 Whitewater Fire - 10,407 Acres
 Little Devil Fire - 582 Acres
 French Fire - 2 Acres
 Scorpion Fire - 169 Acres
 Map Created 8/31/2017 8:16:54 PM RDC

- North
- Drop Point
- IR Heat Source
- Water Source
- Completed Dozer R - Road as Line
- Helispot
- Staging Area
- Uncontrolled Fire
- Completed Hand

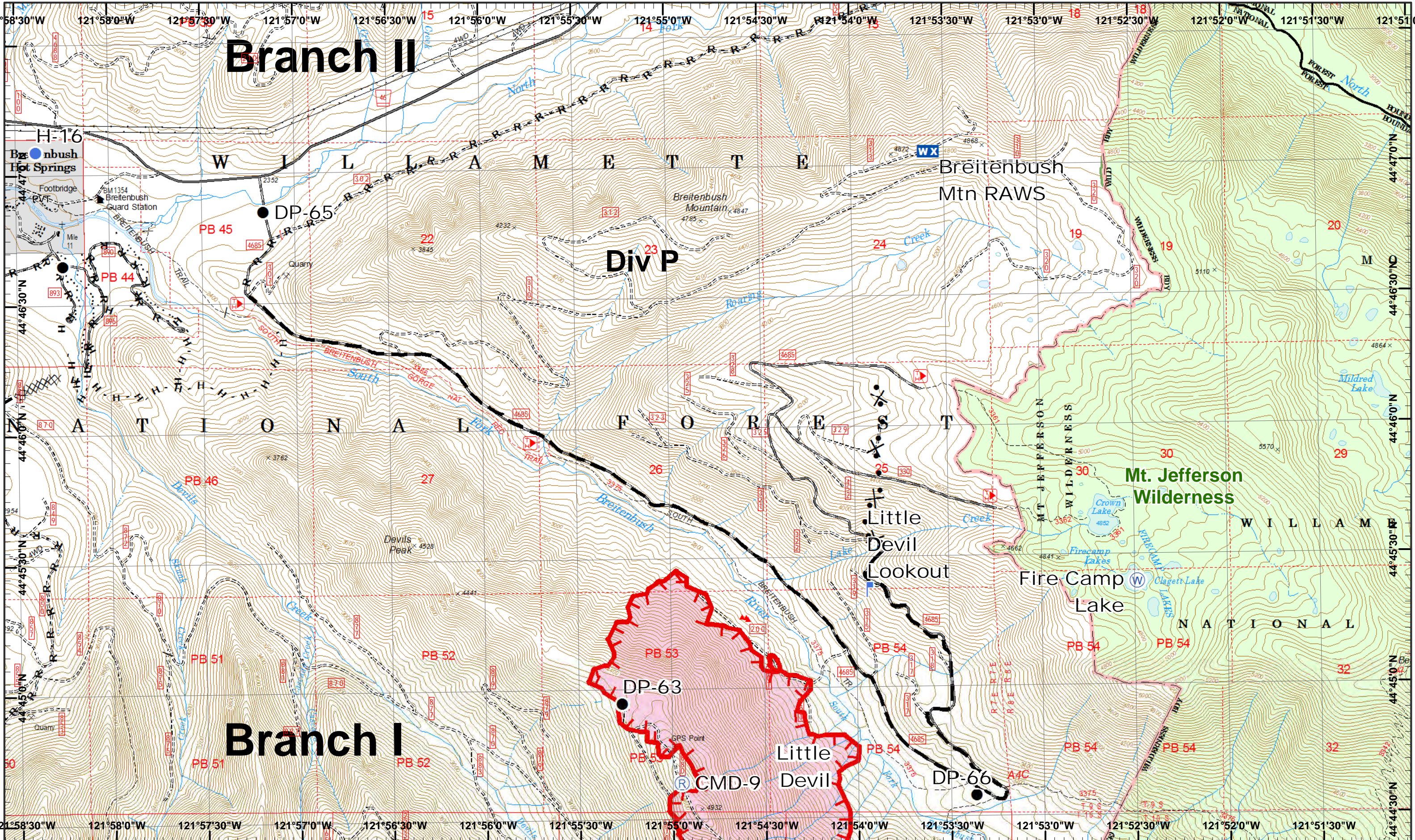


1	2
3	4
5	6
7	8
9	10
11	12
13	14

Branch II

Branch I

Div P

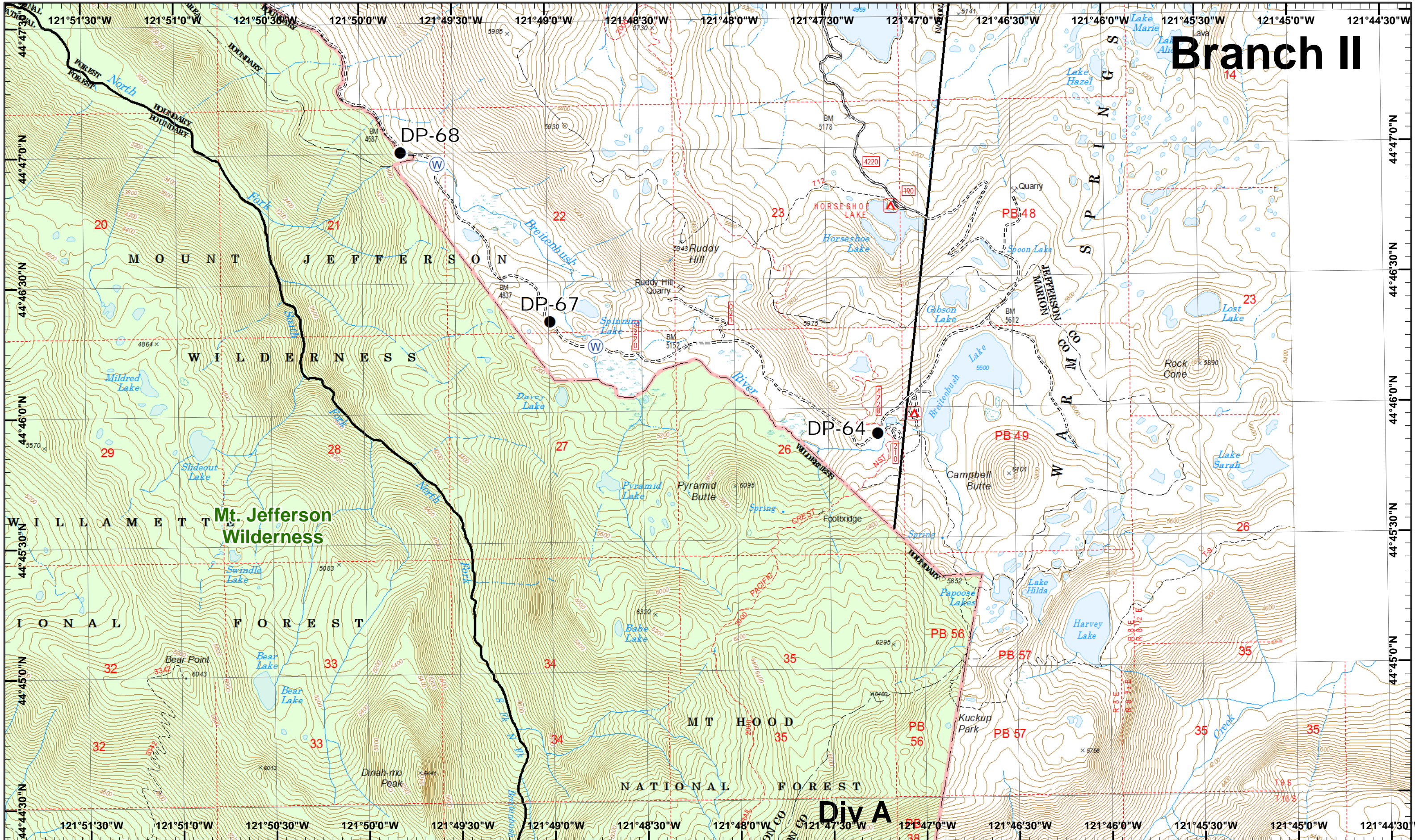


Whitewater Incident
 September 1, 2017

IR 8/31/2017 @ 0241
 Whitewater Fire - 10,407 Acres
 Little Devil Fire - 582 Acres
 French Fire - 2 Acres
 Scorpion Fire - 169 Acres
 Map Created 8/31/2017 8:17:04 PM RDC

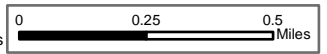
- Drop Point
- IR Heat Source
- Mobile Weather
- Water Source
- Completed Dozer
- Road as Line
- Proposed Dozer
- Helispot
- Lookout
- Repeater
- Uncontrolled Fire
- Completed Hand
- Planned Fire Line

Branch II



Whitewater Incident
September 1, 2017

IR 8/31/2017 @ 0241
Whitewater Fire - 10,407 Acres
Little Devil Fire - 582 Acres
French Fire - 2 Acres
Scorpion Fire - 169 Acres



● Drop Point (W) Water Source

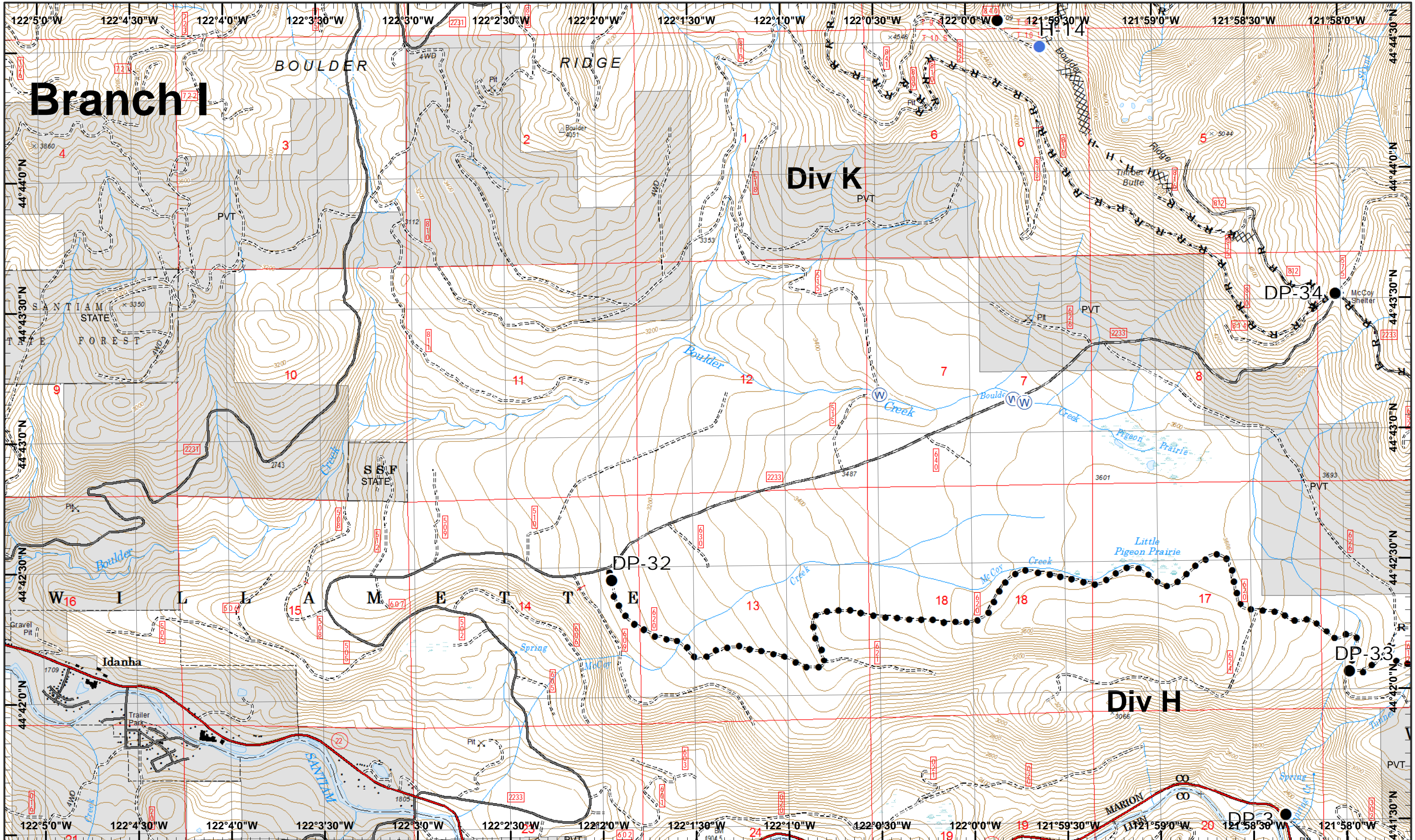
Map Created 8/31/2017 8:17:14 PM RDC



1	2
3	4
5	6
7	8
9	10
11	12
13	14

Page 5
() Division
[] Branch





Branch I

Div K

Div H



- Drop Point
- ⊕ Water Source
- XXXX Completed Dozer R - Road as Line
- H - Completed Hand
- Planned Secondary Line
- Helispot



1	2
3	4
5	6
7	8
9	10
11	12
13	14

Branch I

Div K

Little Devil

Mt. Jefferson Wilderness

Whitewater

Div H

Whitewater Incident
September 1, 2017

IR 8/31/2017 @ 0241
Whitewater Fire - 10,407 Acres
Little Devil Fire - 582 Acres
French Fire - 2 Acres
Scorpion Fire - 169 Acres
Map Created 8/31/2017 8:17:33 PM RDC

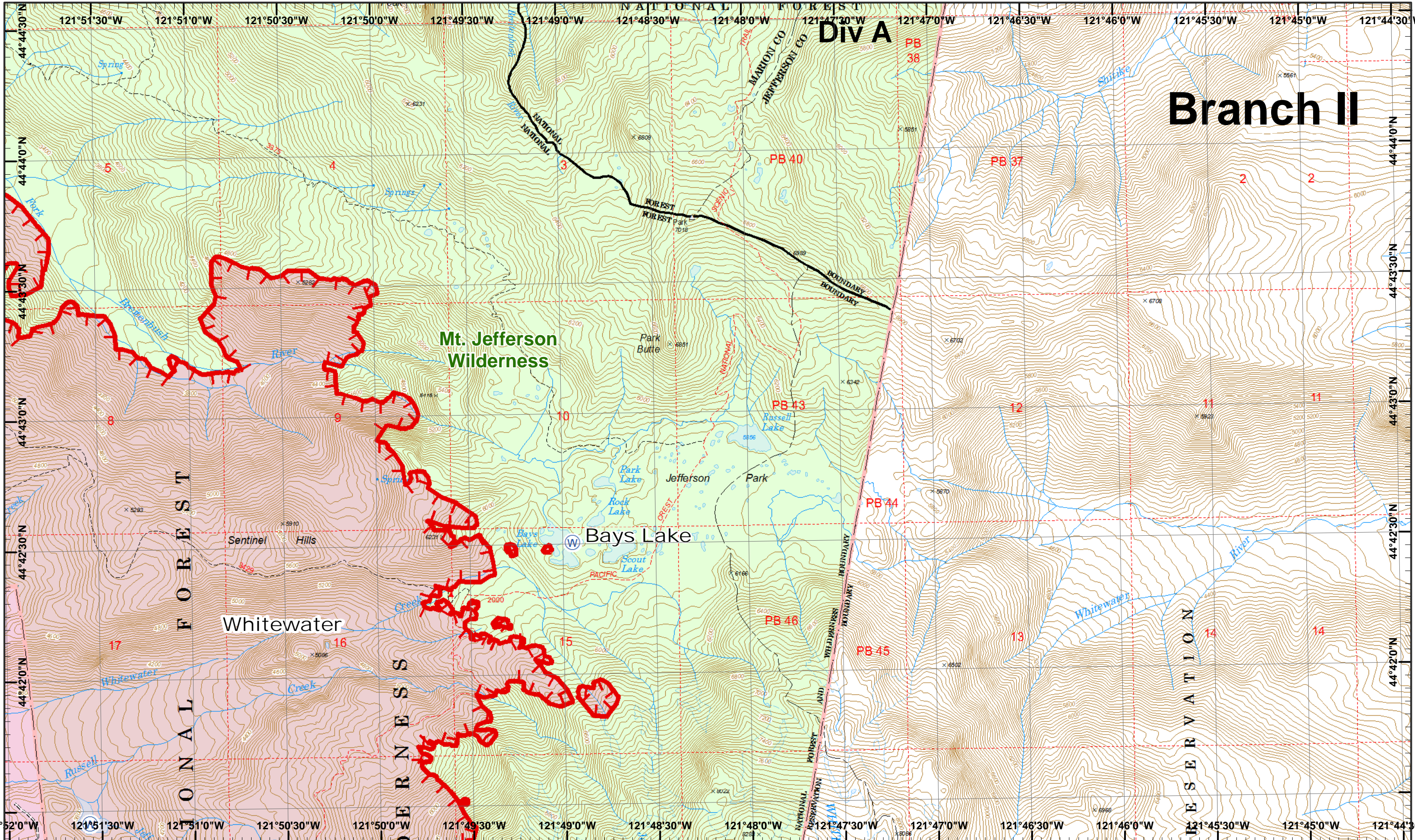
- Drop Point
- ▲ IR Heat Source
- Ⓜ Repeater
- Ⓜ Water Source
- Helispot
- WX Mobile Weather



1	2
3	4
5	6
7	8
9	10
11	12
13	14

Page 7
)(Division
][Branch





Branch II

Div A

Mt. Jefferson Wilderness

Bays Lake

Whitewater

Whitewater Incident
 September 1, 2017

IR 8/31/2017 @ 0241
 Whitewater Fire - 10,407 Acres
 Little Devil Fire - 582 Acres
 French Fire - 2 Acres
 Scorpion Fire - 169 Acres
 Map Created 8/31/2017 8:17:45 PM RDC



▲ IR Heat Source
 ◻ Uncontrolled Fire

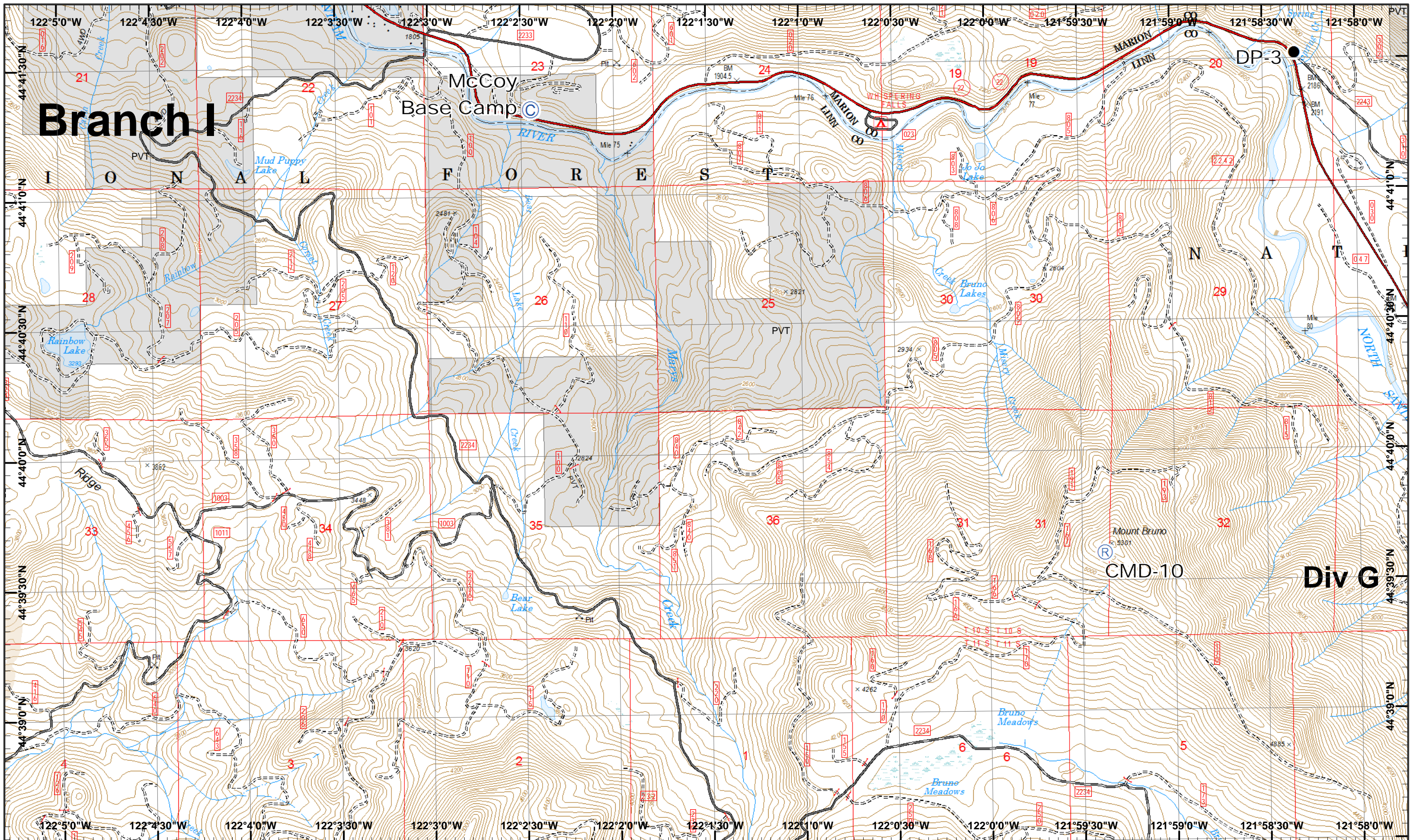
⊙ Water Source



	1	2
3	4	5
6	7	8
9	10	11
12	13	14

Page 8
)(Division
][Branch





Branch I

McCoy
Base Camp

DP-3

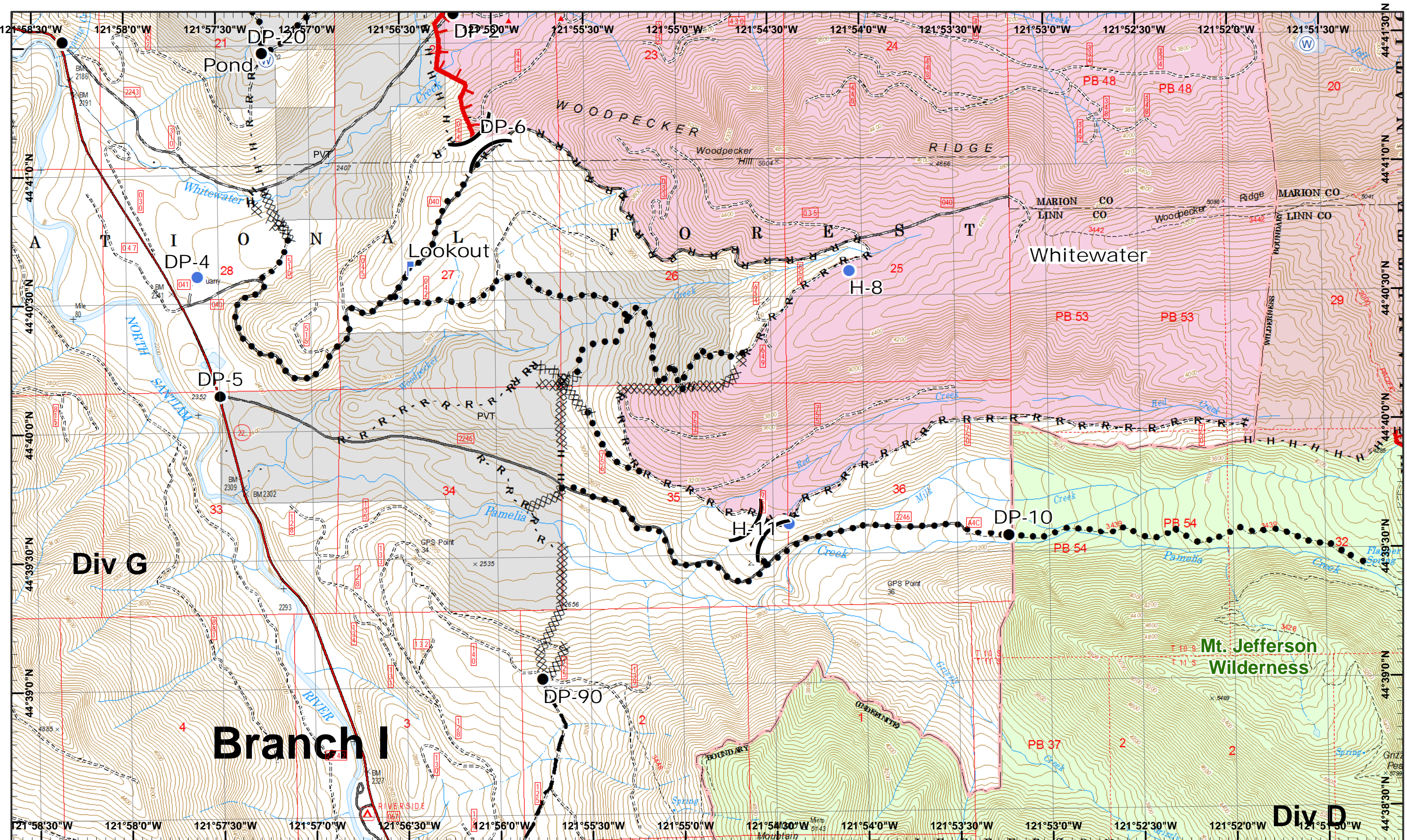
CMD-10

Div G



1	2
3	4
5	6
7	8
9	10
11	12
13	14





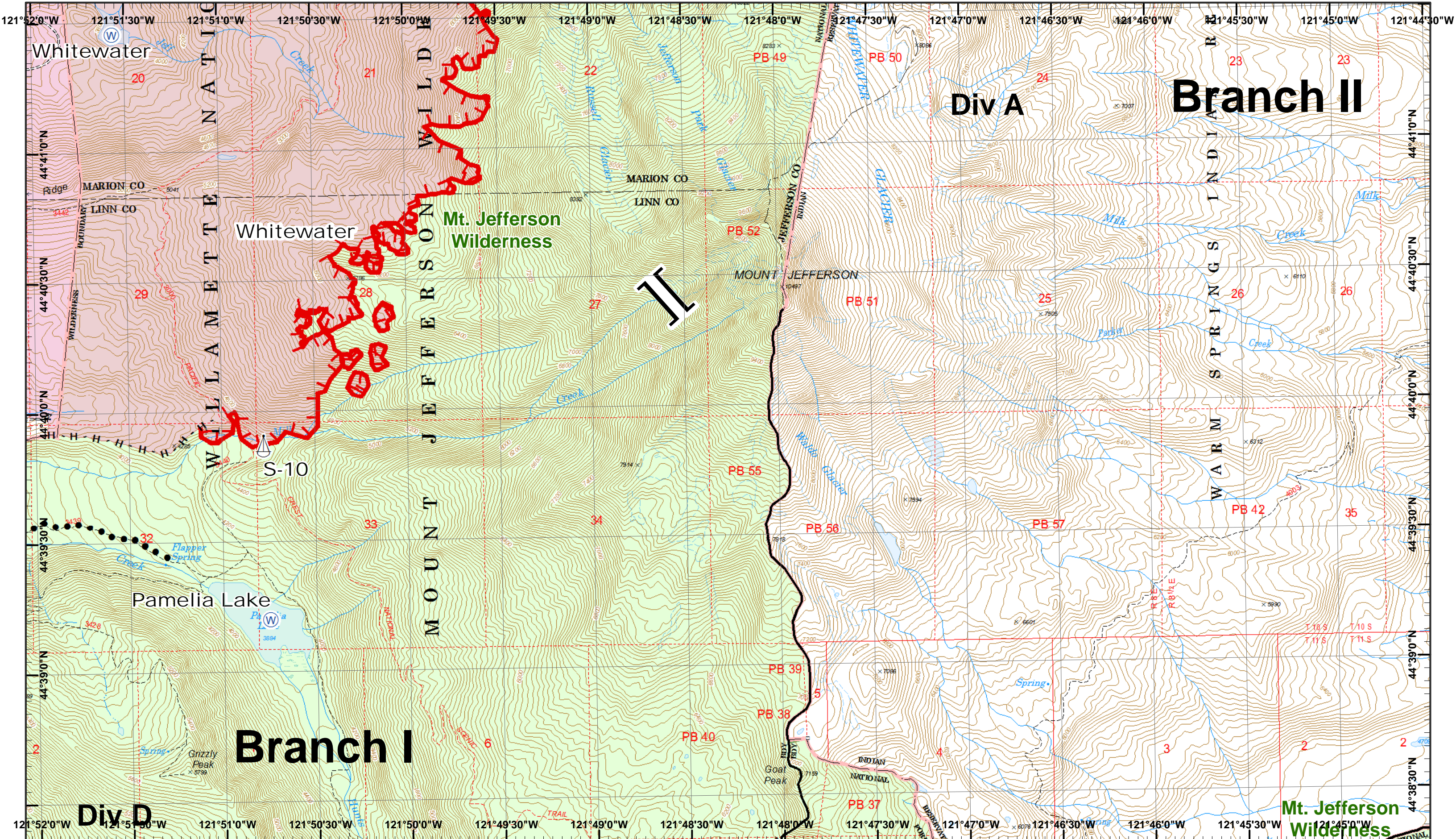
Whitewater Incident
 September 1, 2017

IR 8/31/2017 @ 0241
 Whitewater Fire - 10,407 Acres
 Little Devil Fire - 582 Acres
 French Fire - 2 Acres
 Scorpion Fire - 169 Acres
 Map Created 8/31/2017 8:15:38 PM RDC

- North
- Drop Point
- IR Heat Source
- Water Source
- Completed Dozer
- Road as Line
- Planned Secondary Line
- Helispot
- Lookout
- Uncontrolled Fire
- Completed Hand
- Planned Fire Line

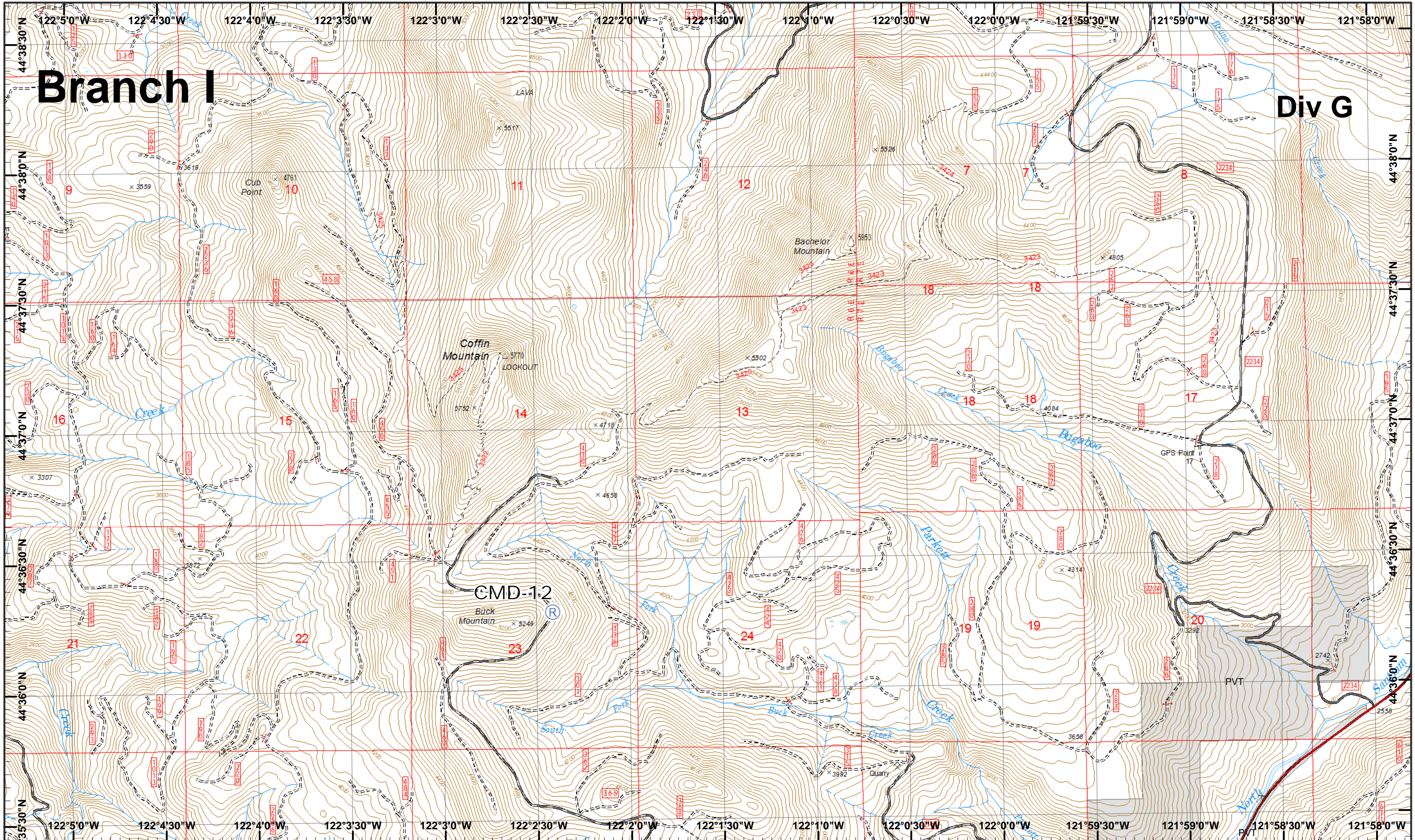


1	2
3	4
5	6
7	8
9	10
11	12
13	14



Branch I

Div G



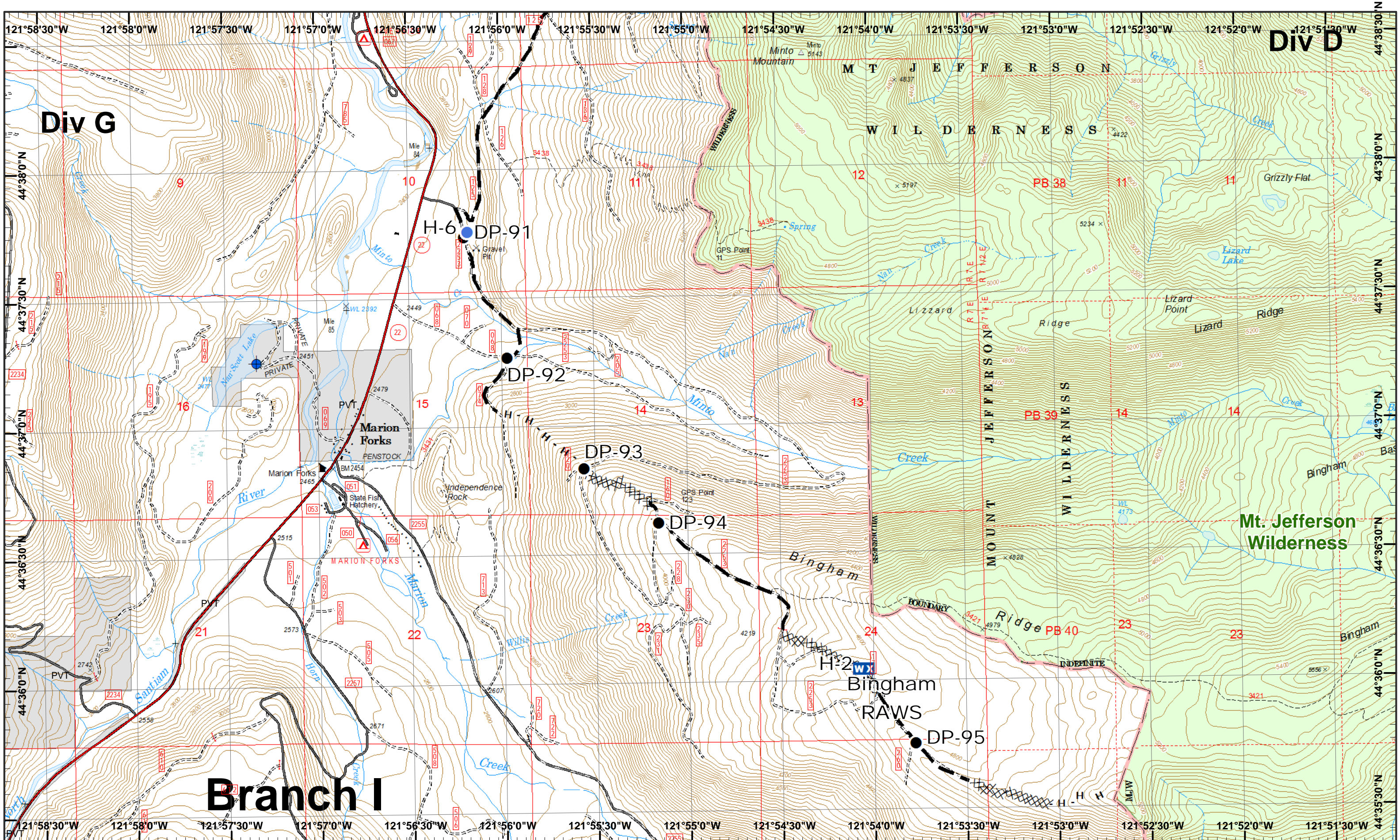
Whitewater Incident
September 1, 2017

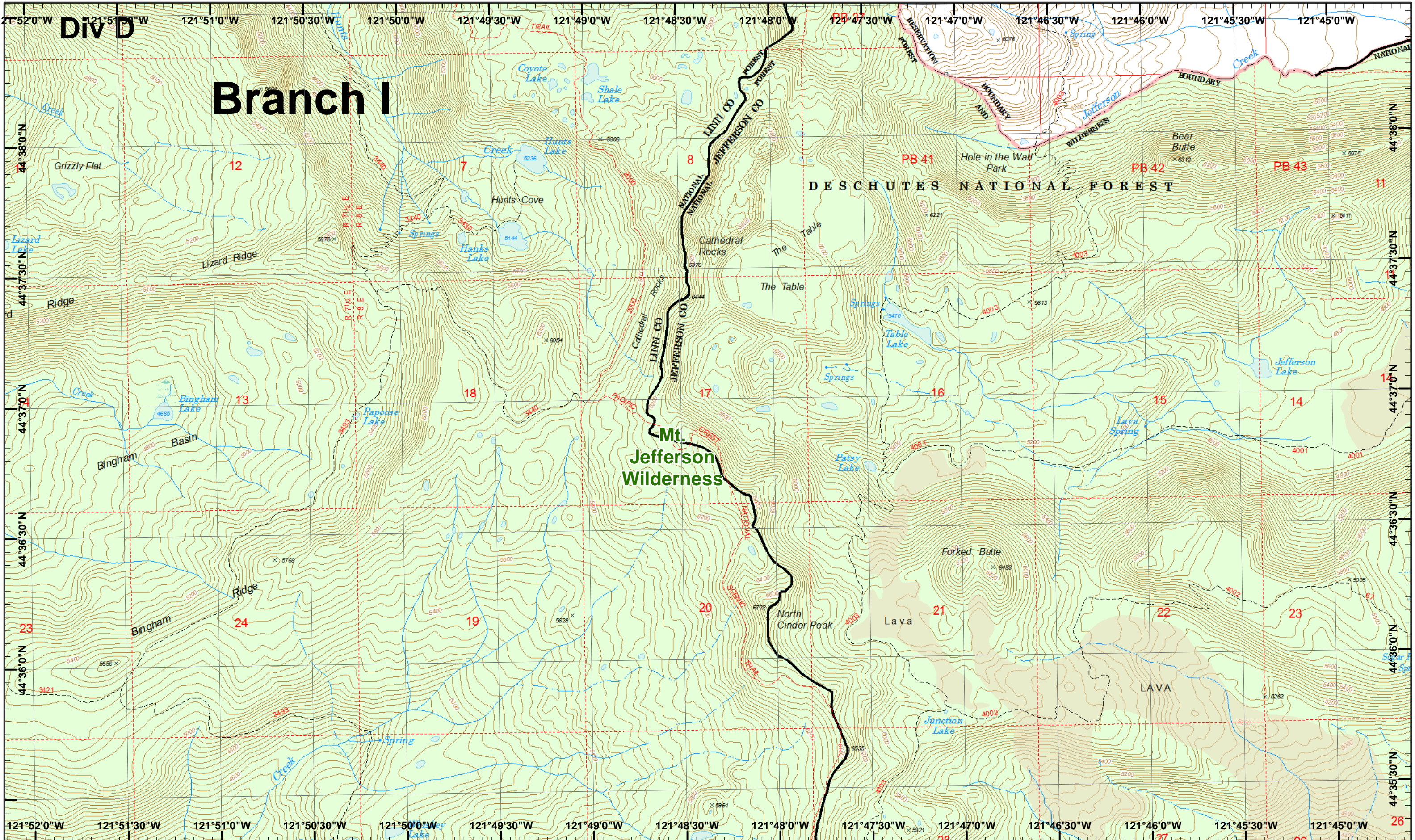
IR 8/31/2017 @ 0241
Whitewater Fire - 10,407 Acres
Little Devil Fire - 582 Acres
French Fire - 2 Acres
Scorpion Fire - 169 Acres
Map Created 8/31/2017 8:16:01 PM RDC



1	2
3	4
5	6
7	8
9	10
11	12
13	14







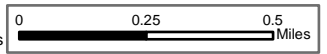
DIV D

Branch I

Whitewater Incident
 September 1, 2017

IR 8/31/2017 @ 0241
 Whitewater Fire - 10,407 Acres
 Little Devil Fire - 582 Acres
 French Fire - 2 Acres
 Scorpion Fire - 169 Acres

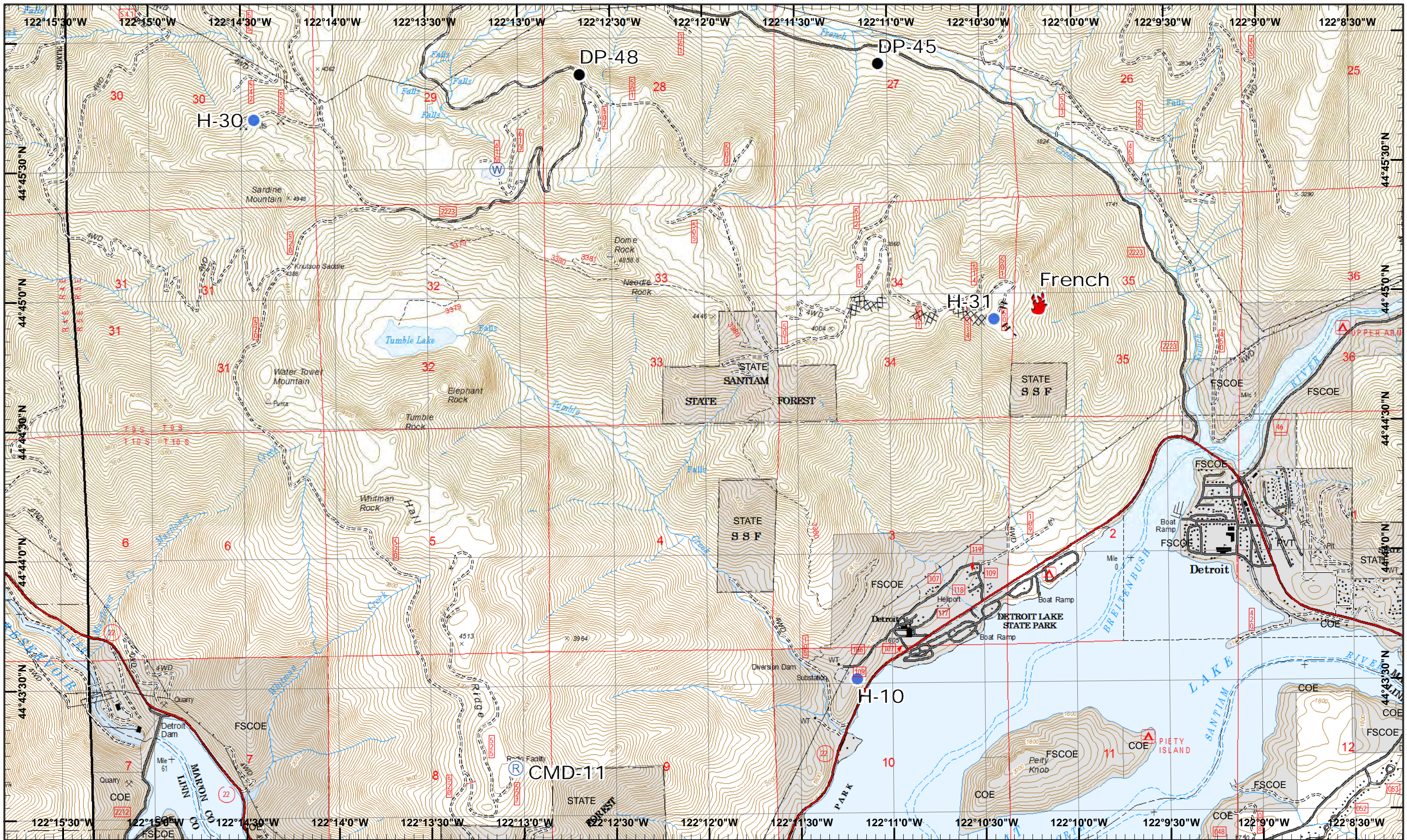
Map Created 8/31/2017 8:16:20 PM RDC



1	2
3	4
6	7
9	10
12	13

Page 14
)(Division
)(Branch





Whitewater Incident
 September 1, 2017

IR 8/31/2017 @ 0241
 Whitewater Fire - 10,407 Acres
 Little Devil Fire - 582 Acres
 French Fire - 2 Acres
 Scorpion Fire - 169 Acres
 Map Created 8/31/2017 8:16:34 PM RDC



- Drop Point
- 🔥 Fire Location
- Helispot
- Ⓡ Repeater
- Ⓜ Water Source
- XXXX Completed Dozer
- H - Completed Hand



1	2
3	4
5	6
7	8
9	10
11	12
13	14