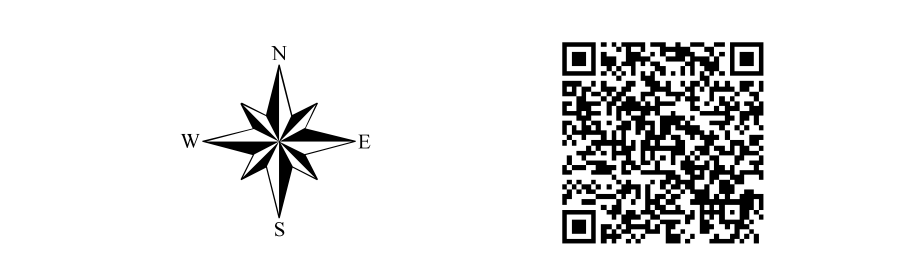


# Whitewater Fire Pilot's Map

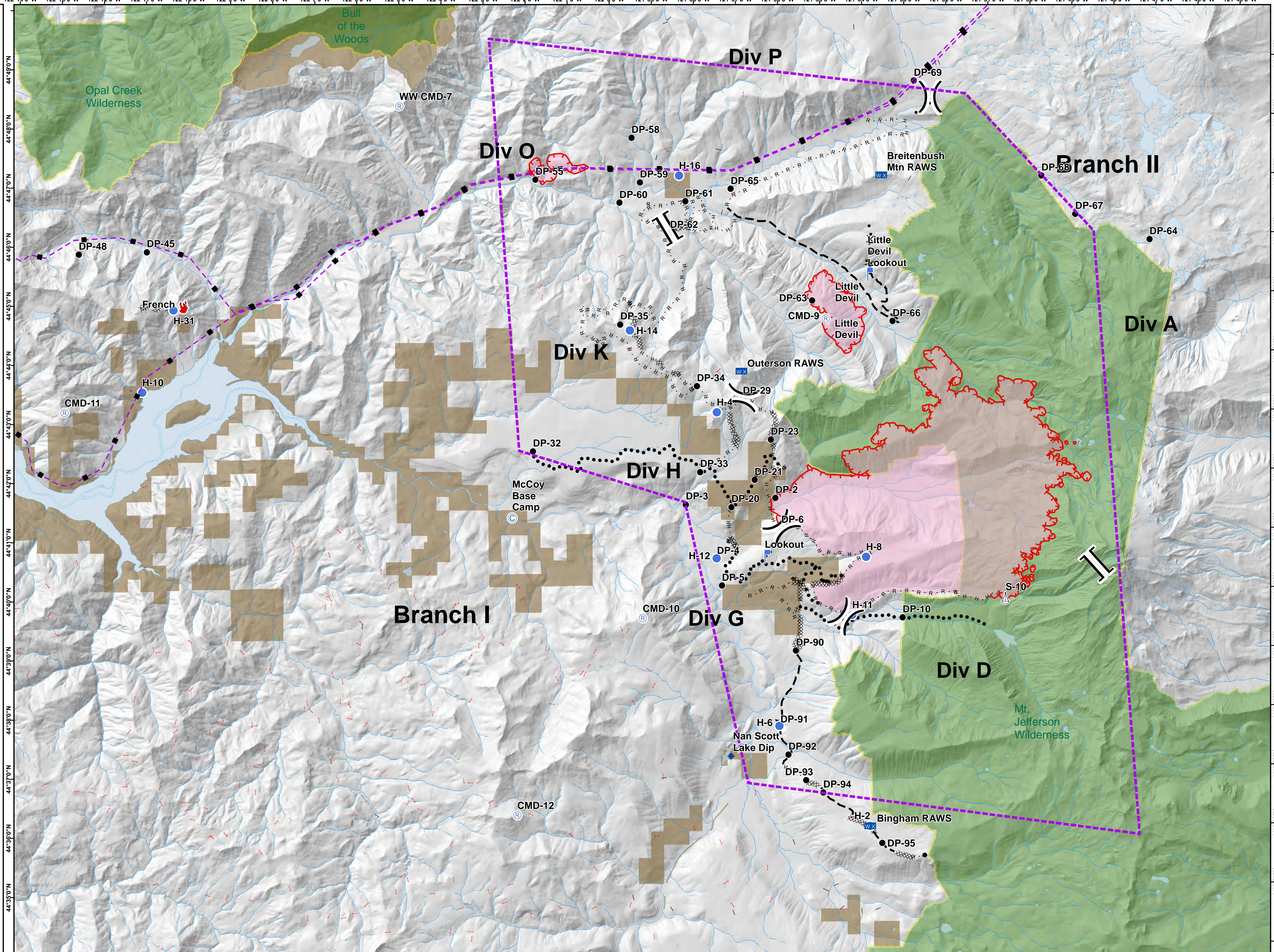
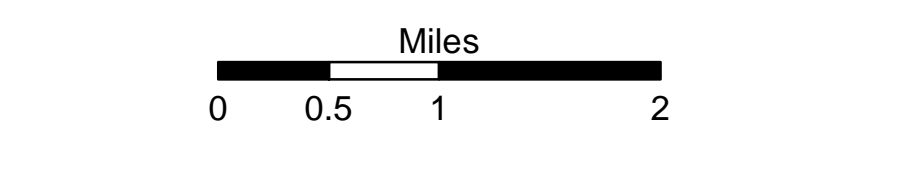
## OR-WIF-170123

September 1, 2017



- Camp
- Dip Site
- Drop Point
- Fire Location
- Helispot
- Lookout
- Mobile Weather Unit
- Repeater
- Sling Site
- Division Break
- Branch Break
- Uncontrolled Fire Edge
- Completed Dozer Line
- Completed Hand Line
- Road as Completed Line
- Proposed Dozer Line
- Planned Fire Line
- Planned Secondary Line
- TFR
- Fire Area

Label	Latitude	Longitude
Nan Scott Lake Dip	N44° 37.260'	W121° 57.333'
DP-2	N44° 41.616'	W121° 56.206'
DP-3	N44° 41.523'	W121° 58.333'
DP-32	N44° 42.452'	W122° 1.942'
DP-33	N44° 42.070'	W121° 57.980'
DP-34	N44° 43.522'	W121° 58.033'
DP-60	N44° 46.641'	W121° 59.815'
DP-61	N44° 46.652'	W121° 58.252'
DP-65	N44° 46.853'	W121° 57.170'
DP-66	N44° 44.581'	W121° 53.369'
DP-69	N44° 48.642'	W121° 52.784'
DP-4	N44° 40.599'	W121° 57.607'
DP-35	N44° 44.582'	W121° 59.832'
DP-62	N44° 46.121'	W121° 58.623'
DP-10	N44° 39.568'	W121° 53.226'
DP-20	N44° 41.470'	W121° 57.251'
DP-23	N44° 42.603'	W121° 56.295'
DP-29	N44° 43.302'	W121° 56.947'
DP-90	N44° 39.029'	W121° 55.765'
DP-91	N44° 37.740'	W121° 56.201'
DP-92	N44° 37.270'	W121° 55.974'
DP-93	N44° 36.835'	W121° 55.563'
DP-94	N44° 36.623'	W121° 55.162'
DP-95	N44° 35.758'	W121° 53.780'
DP-21	N44° 41.924'	W121° 56.691'
DP-5	N44° 40.143'	W121° 57.498'
DP-6	N44° 41.112'	W121° 56.073'
DP-63	N44° 44.947'	W121° 55.271'
DP-45	N44° 45.893'	W122° 11.051'
DP-48	N44° 45.863'	W122° 12.669'
DP-171	N44° 8.226'	W121° 58.391'
DP-68	N44° 47.007'	W121° 49.788'
DP-67	N44° 46.352'	W121° 48.994'
DP-64	N44° 45.903'	W121° 47.238'
DP-55	N44° 47.049'	W122° 1.803'
DP-59	N44° 46.980'	W121° 59.323'
DP-58	N44° 47.735'	W121° 59.510'
French	N44° 44.964'	W122° 10.188'
Helibase	N44° 26.023'	W121° 56.427'
H-2	N44° 36.047'	W121° 54.058'
H-10	N44° 43.520'	W122° 11.194'
H-11	N44° 39.621'	W121° 54.418'
H-15	N44° 25.170'	W121° 51.439'
H-4	N44° 43.078'	W121° 57.568'
H-8	N44° 40.600'	W121° 54.073'
H-12	N44° 40.607'	W121° 57.614'
H-14	N44° 44.480'	W121° 59.608'
H-6	N44° 37.760'	W121° 56.180'
H-16	N44° 47.089'	W121° 58.391'
H-30	N44° 45.698'	W122° 14.432'
H-31	N44° 44.904'	W122° 10.436'
Lookout	N44° 40.631'	W121° 56.472'
Little Devil Lookout	N44° 45.376'	W121° 53.947'
Bingham RAWs	N44° 36.047'	W121° 54.058'
Outerson RAWs	N44° 43.767'	W121° 56.968'
Breitenbush Mtn RAW	N44° 47.053'	W121° 53.588'
Hoodoo RAWs	N44° 24.073'	W121° 53.042'
CMD-8	N44° 24.121'	W121° 52.952'
CMD-9	N44° 44.641'	W121° 54.953'
CMD-11	N44° 43.190'	W122° 13.045'
CMD-10	N44° 39.609'	W121° 59.383'
WW CMD-7	N44° 48.318'	W122° 5.020'
CMD-12	N44° 36.303'	W122° 2.413'
SZ	N44° 8.225'	W121° 59.754'
S-10	N44° 39.867'	W121° 50.782'



44°35'0"N 44°36'0"N 44°37'0"N 44°38'0"N 44°39'0"N 44°40'0"N 44°41'0"N 44°42'0"N 44°43'0"N 44°44'0"N 44°45'0"N 44°46'0"N 44°47'0"N 44°48'0"N 44°49'0"N

122°14'0"W 122°13'0"W 122°12'0"W 122°11'0"W 122°10'0"W 122°9'0"W 122°8'0"W 122°7'0"W 122°6'0"W 122°5'0"W 122°4'0"W 122°3'0"W 122°2'0"W 122°1'0"W 122°0'0"W 121°59'0"W 121°58'0"W 121°57'0"W 121°56'0"W 121°55'0"W 121°54'0"W 121°53'0"W 121°52'0"W 121°51'0"W 121°50'0"W 121°49'0"W 121°48'0"W 121°47'0"W 121°46'0"W 121°45'0"W