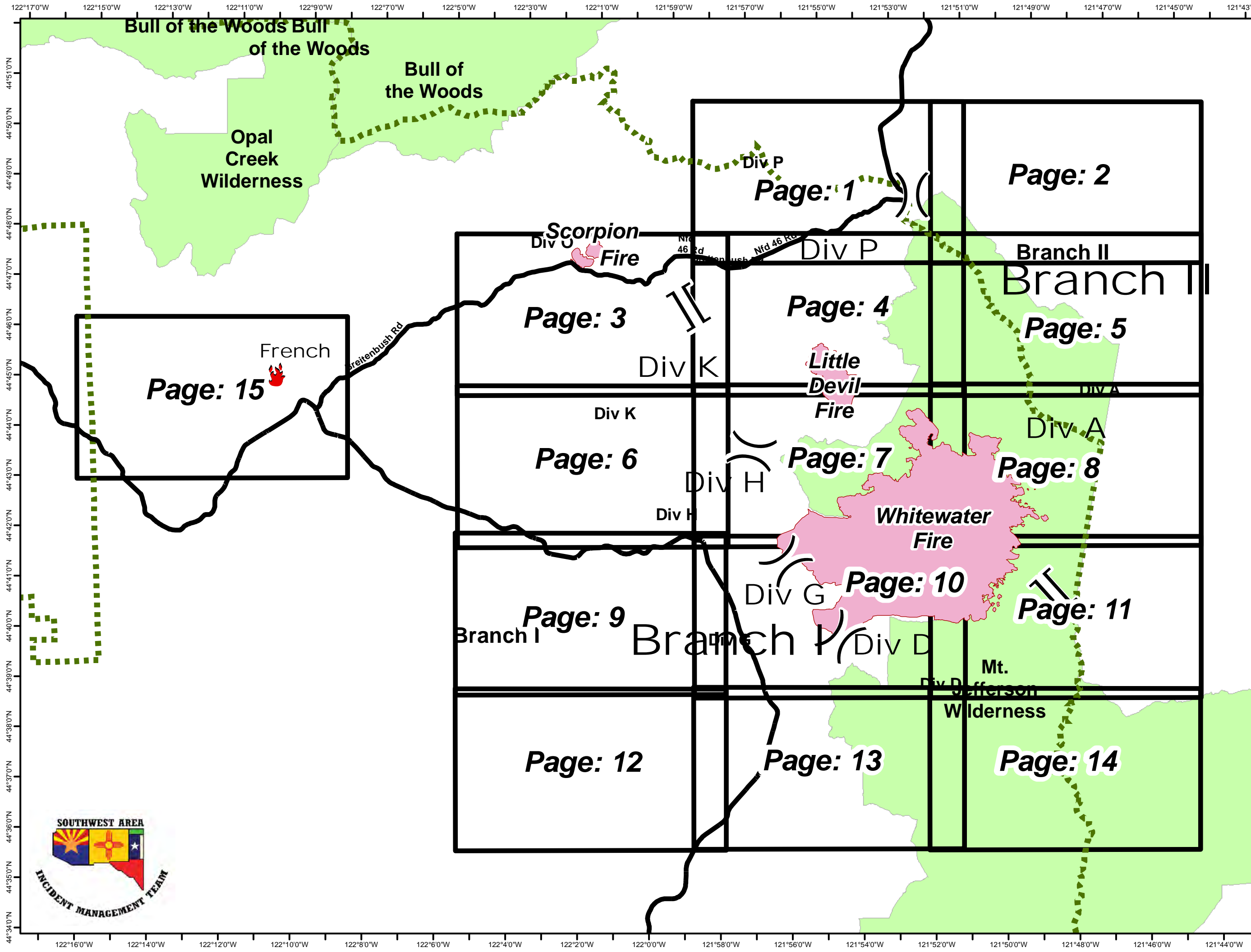
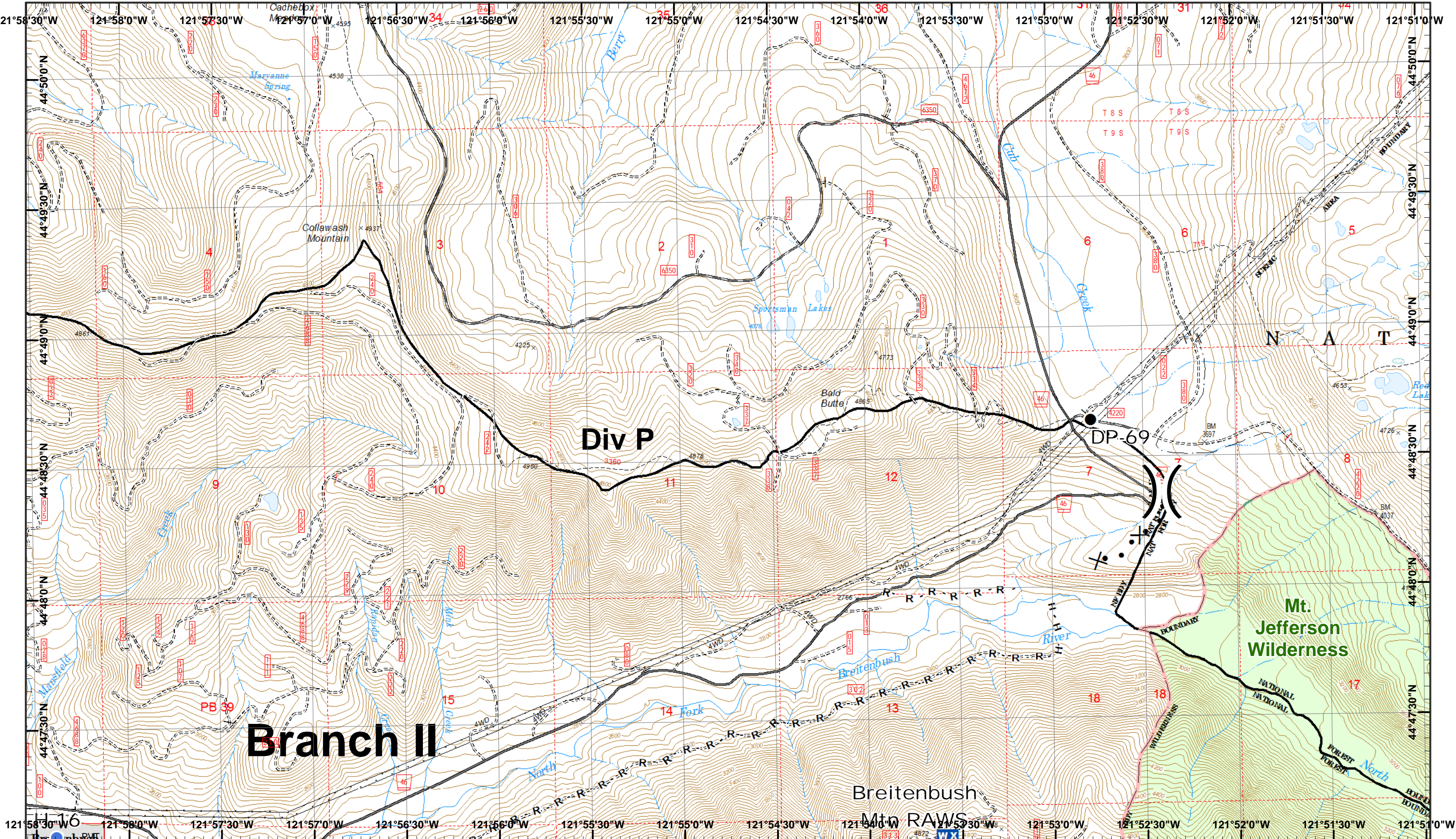


# Whitewater, French, Little Devil Fires IAP

September 2, 2017

- Camp
- Closure
- Dip Site
- Drop Point
- Gate
- Helispot
- IR Isolated Heat Source
- Internet Access
- Lookout
- Mobile Weather Unit
- Pump
- Repeater
- Safety Zone
- Water Source
- Value at Risk
- Uncontrolled Fire Edge
- Completed Line
- Completed Dozer Line
- Completed Hand Line
- Road as Completed Line
- Proposed Dozer Line
- Planned Fire Line
- Other





**Whitewater Incident**  
 September 2, 2017

IR 8/31/2017 @ 2043  
 Whitewater Fire - 10,445 Acres  
 Little Devil Fire - 599 Acres  
 French Fire - 2 Acres  
 Scorpion Fire - 183 Acres  
 Map Created 9/1/2017 8:11:04 PM RDC

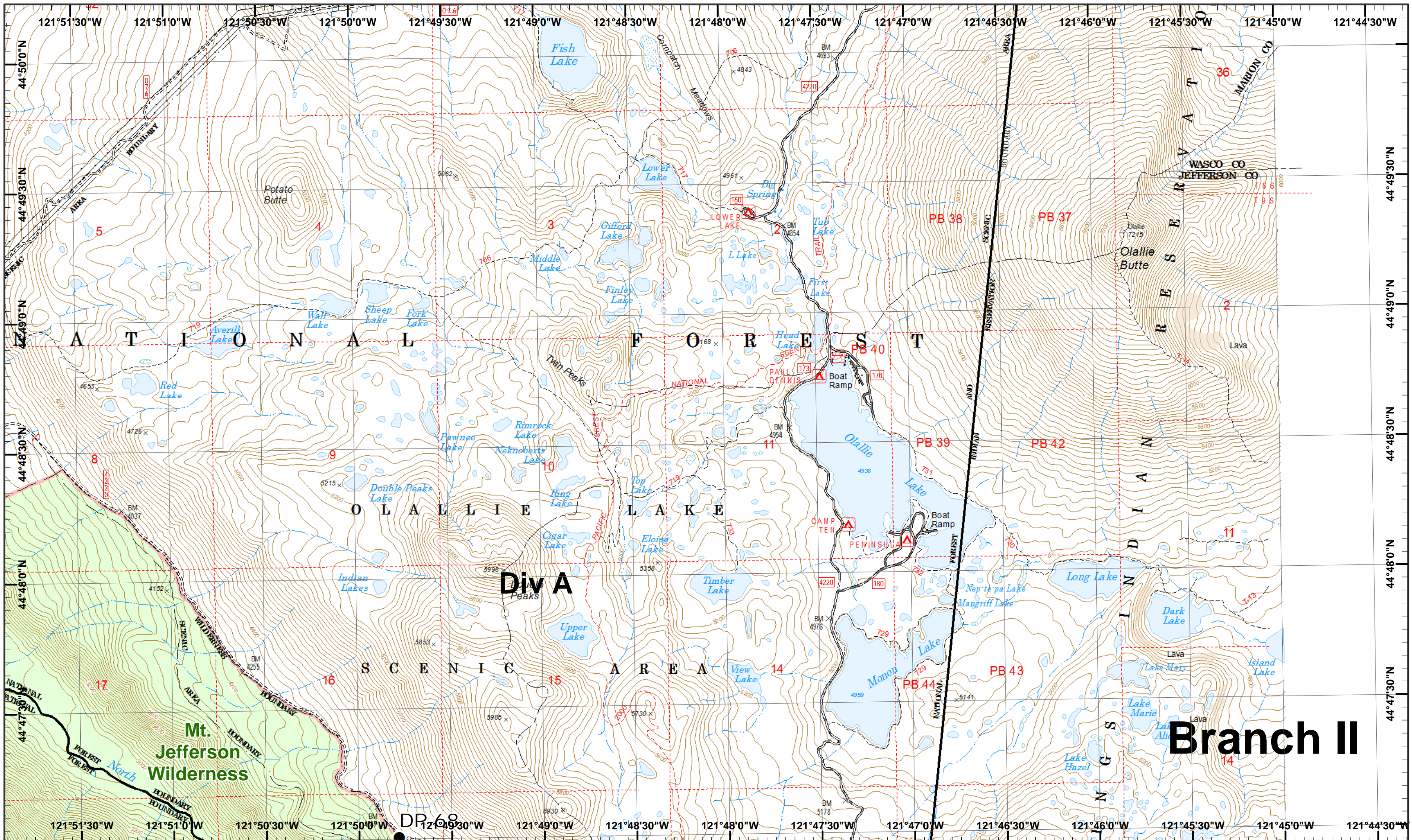
- Drop Point
- Mobile Weather
- Road as Line
- Proposed Dozer
- Helispot
- Completed Hand



|    |    |
|----|----|
| 1  | 2  |
| 3  | 4  |
| 5  | 6  |
| 7  | 8  |
| 9  | 10 |
| 11 | 12 |
| 13 | 14 |

Page 1  
 )( Division  
 ][ Branch

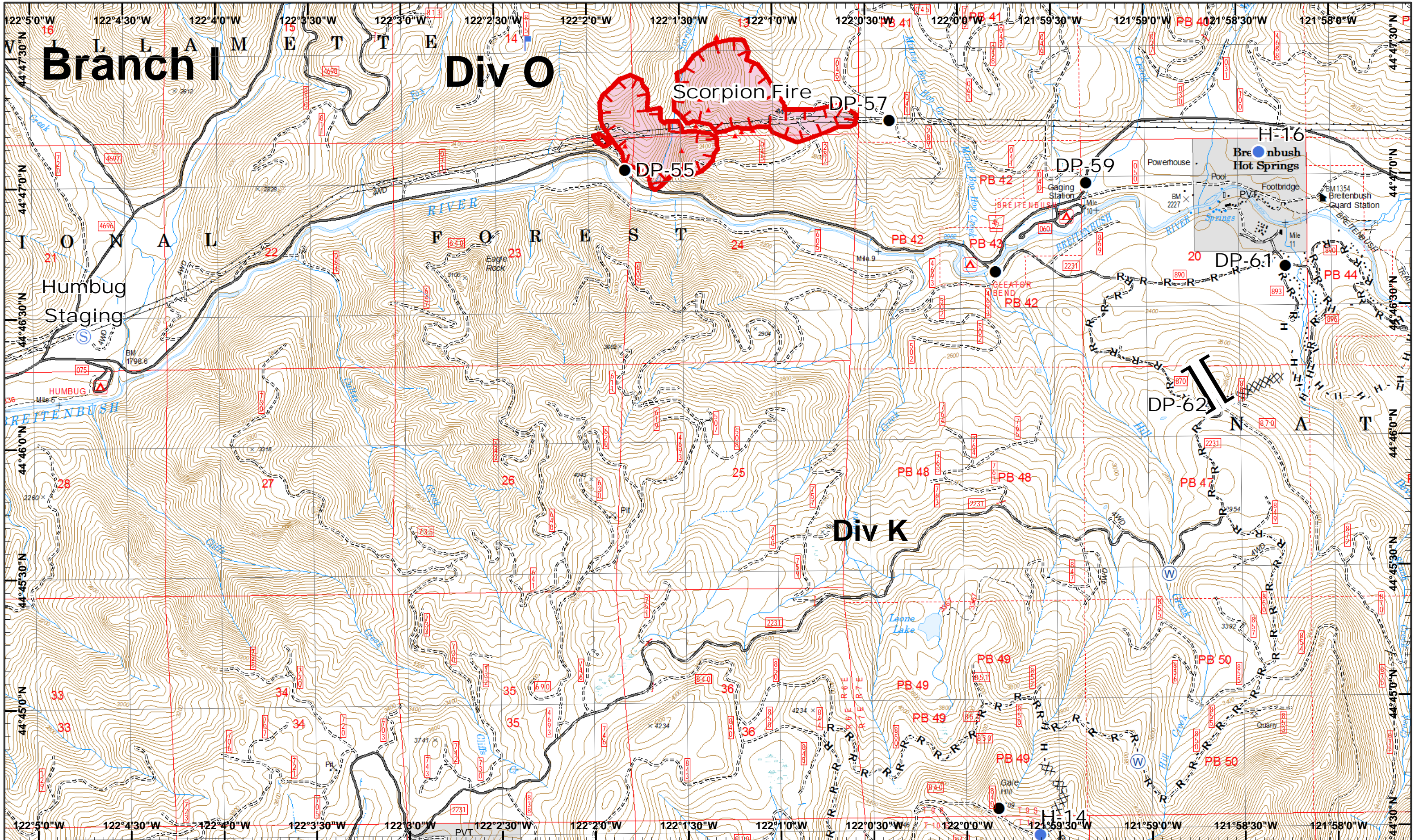




# Branch II



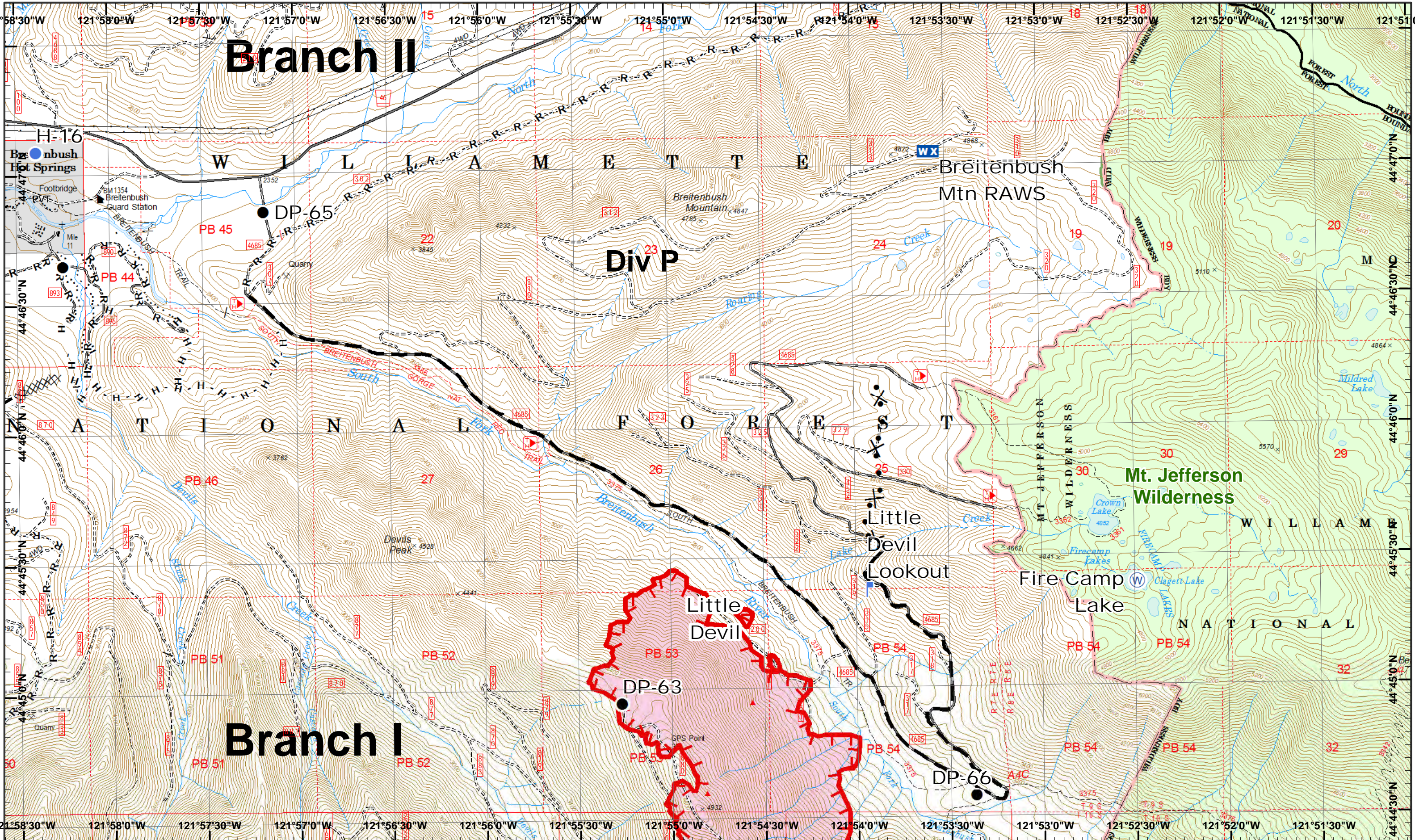
|    |    |
|----|----|
| 1  | 2  |
| 3  | 4  |
| 5  | 6  |
| 7  | 8  |
| 9  | 10 |
| 11 | 12 |
| 13 | 14 |



|    |    |
|----|----|
| 1  | 2  |
| 3  | 4  |
| 5  | 6  |
| 7  | 8  |
| 9  | 10 |
| 11 | 12 |
| 13 | 14 |

# Branch II

# Branch I



**Whitewater Incident**  
September 2, 2017

IR 8/31/2017 @ 2043  
Whitewater Fire - 10,445 Acres  
Little Devil Fire - 599 Acres  
French Fire - 2 Acres  
Scorpion Fire - 183 Acres  
Map Created 9/1/2017 8:12:50 PM RDC

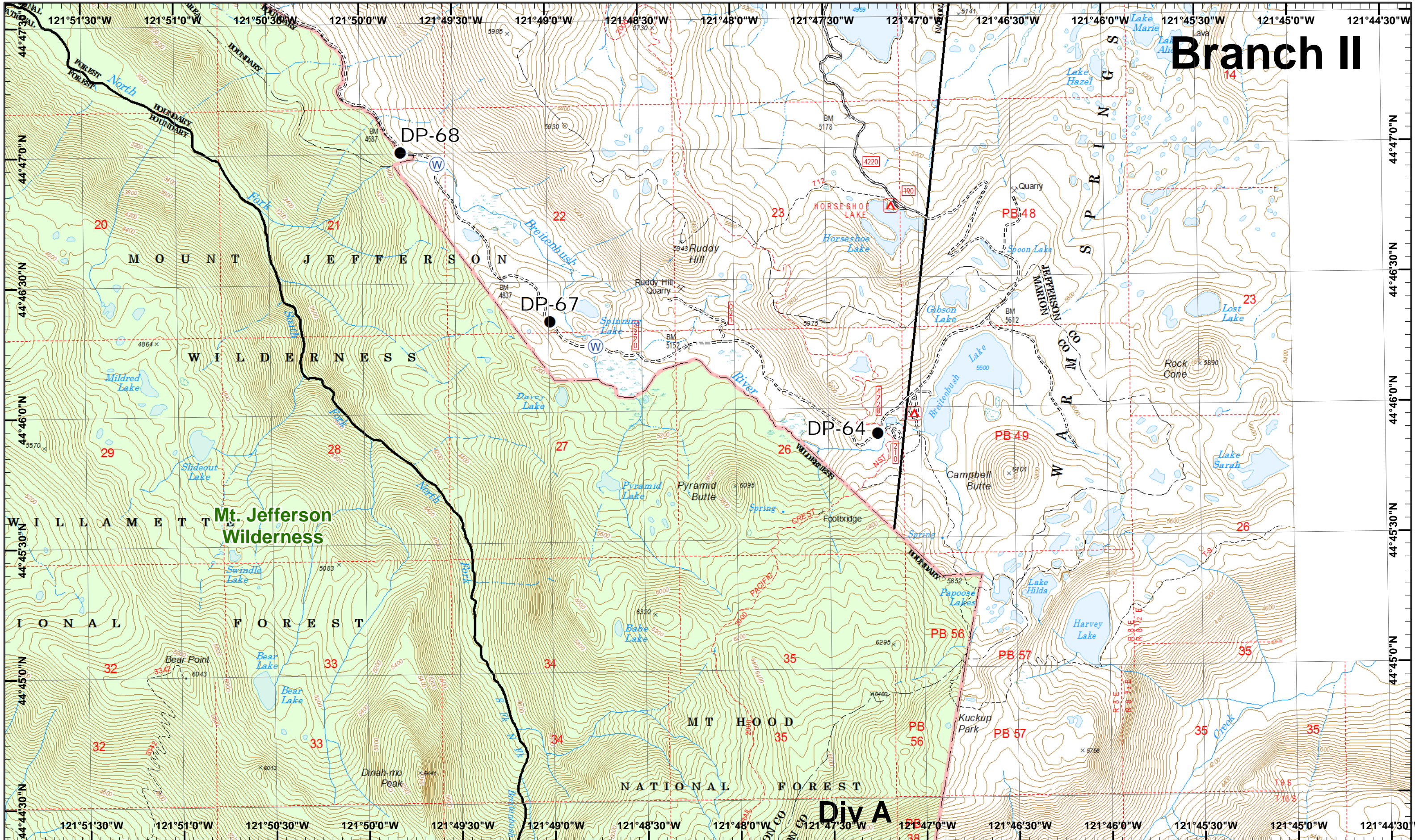
- Drop Point
- IR Heat Source
- Mobile Weather
- Uncontrolled Fire
- Completed Hand
- Proposed Dozer
- Helispot
- Lookout
- Water Source
- Completed Dozer
- Road as Line
- Planned Fire Line



|    |    |
|----|----|
| 1  | 2  |
| 3  | 4  |
| 5  | 6  |
| 7  | 8  |
| 9  | 10 |
| 11 | 12 |
| 13 | 14 |

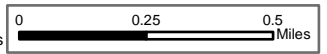


# Branch II



**Whitewater Incident**  
September 2, 2017

IR 8/31/2017 @ 2043  
Whitewater Fire - 10,445 Acres  
Little Devil Fire - 599 Acres  
French Fire - 2 Acres  
Scorpion Fire - 183 Acres



Map Created 9/1/2017 8:13:00 PM RDC

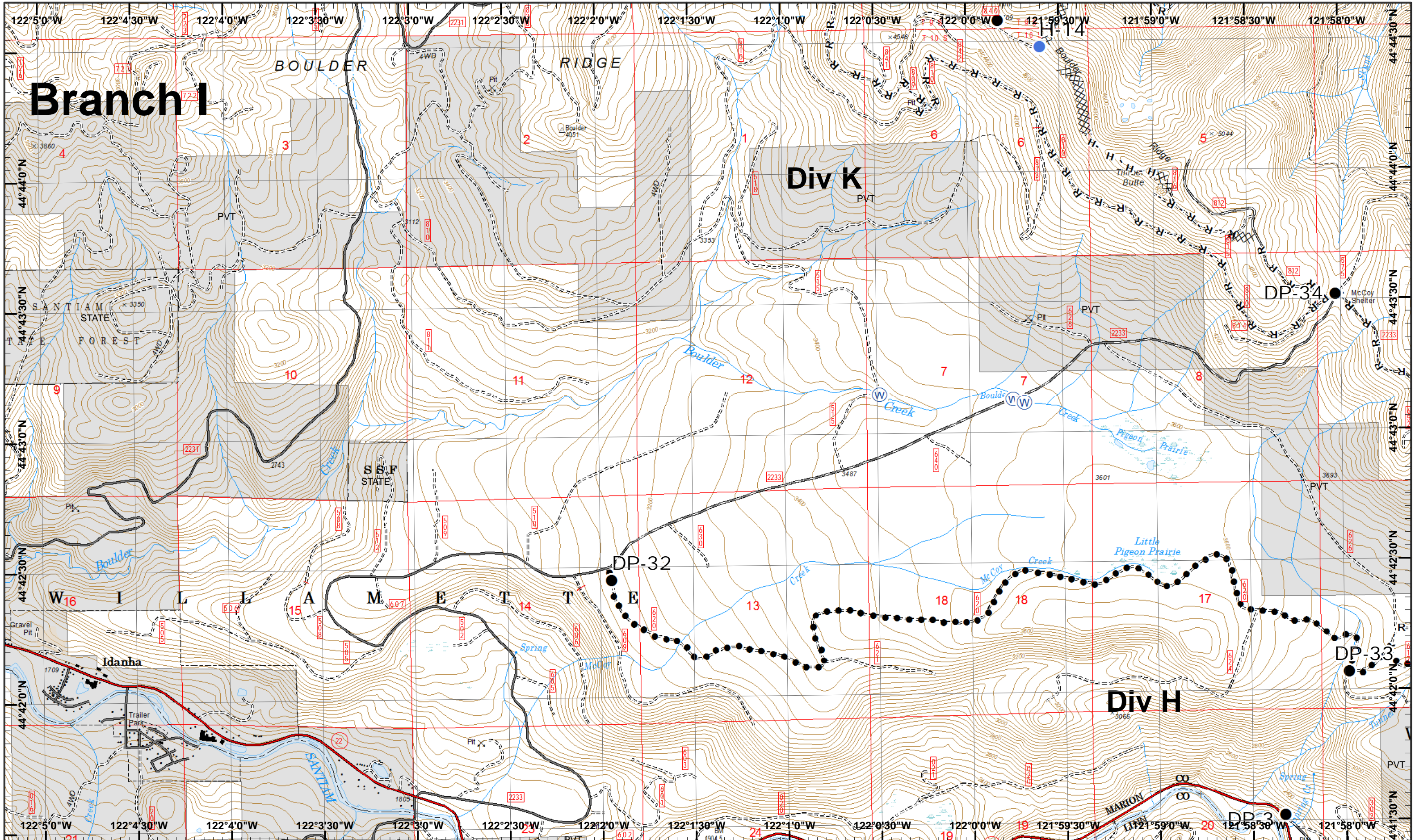
Drop Point Water Source



|    |    |
|----|----|
| 1  | 2  |
| 3  | 4  |
| 5  | 6  |
| 7  | 8  |
| 9  | 10 |
| 11 | 12 |
| 13 | 14 |

Page 5  
( ) Division  
[ ] Branch





# Branch I

# Div K

# Div H

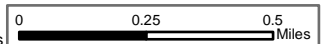
**Whitewater Incident**  
 September 2, 2017

IR 8/31/2017 @ 2043  
 Whitewater Fire - 10,445 Acres  
 Little Devil Fire - 599 Acres  
 French Fire - 2 Acres  
 Scorpion Fire - 183 Acres

Map Created 9/1/2017 8:13:10 PM RDC



- Drop Point
- ⊕ Water Source
- XXXX Completed Dozer
- R - Road as Line
- Planned Secondary Line
- H - Completed Hand
- Helispot



|    |    |
|----|----|
| 1  | 2  |
| 3  | 4  |
| 5  | 6  |
| 7  | 8  |
| 9  | 10 |
| 11 | 12 |
| 13 | 14 |

Page 6  
 )( Division  
 ][ Branch



# Branch I

## Div K

CMD-9  
Little  
Devil

Mt. Jefferson  
Wilderness

Whitewater  
Fire

Div H

**Whitewater Incident**  
September 2, 2017

IR 8/31/2017 @ 2043  
Whitewater Fire - 10,445 Acres  
Little Devil Fire - 599 Acres  
French Fire - 2 Acres  
Scorpion Fire - 183 Acres

Map Created 9/1/2017 8:13:20 PM RDC

- Drop Point
- ▲ IR Heat Source
- Ⓜ Repeater
- Ⓜ Water Source
- Helispot
- WX Mobile Weather
- ▬ Uncontrolled Fire

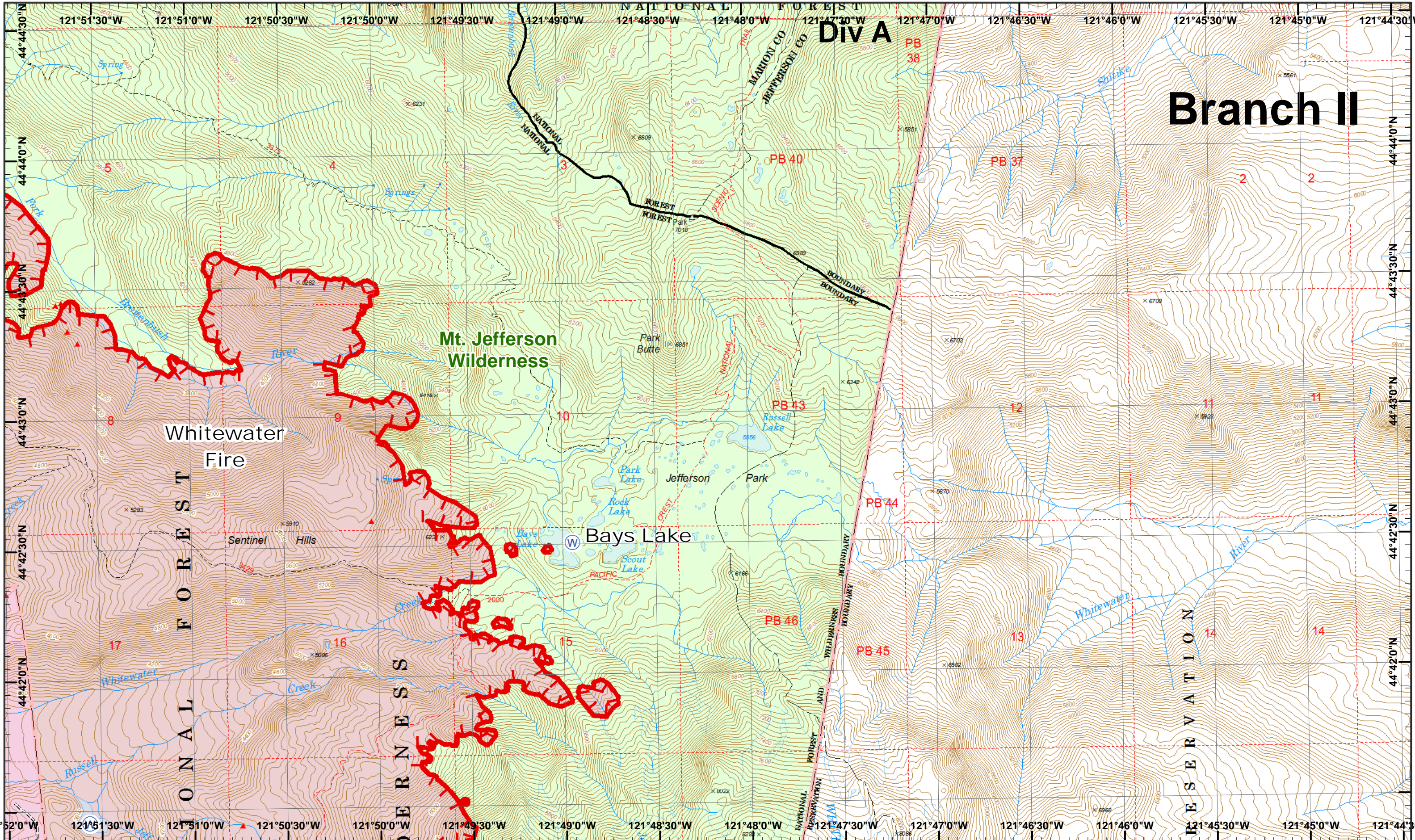


|    |    |
|----|----|
| 1  | 2  |
| 3  | 4  |
| 5  | 6  |
| 7  | 8  |
| 9  | 10 |
| 11 | 12 |
| 13 | 14 |

Page 7  
)( Division  
][ Branch

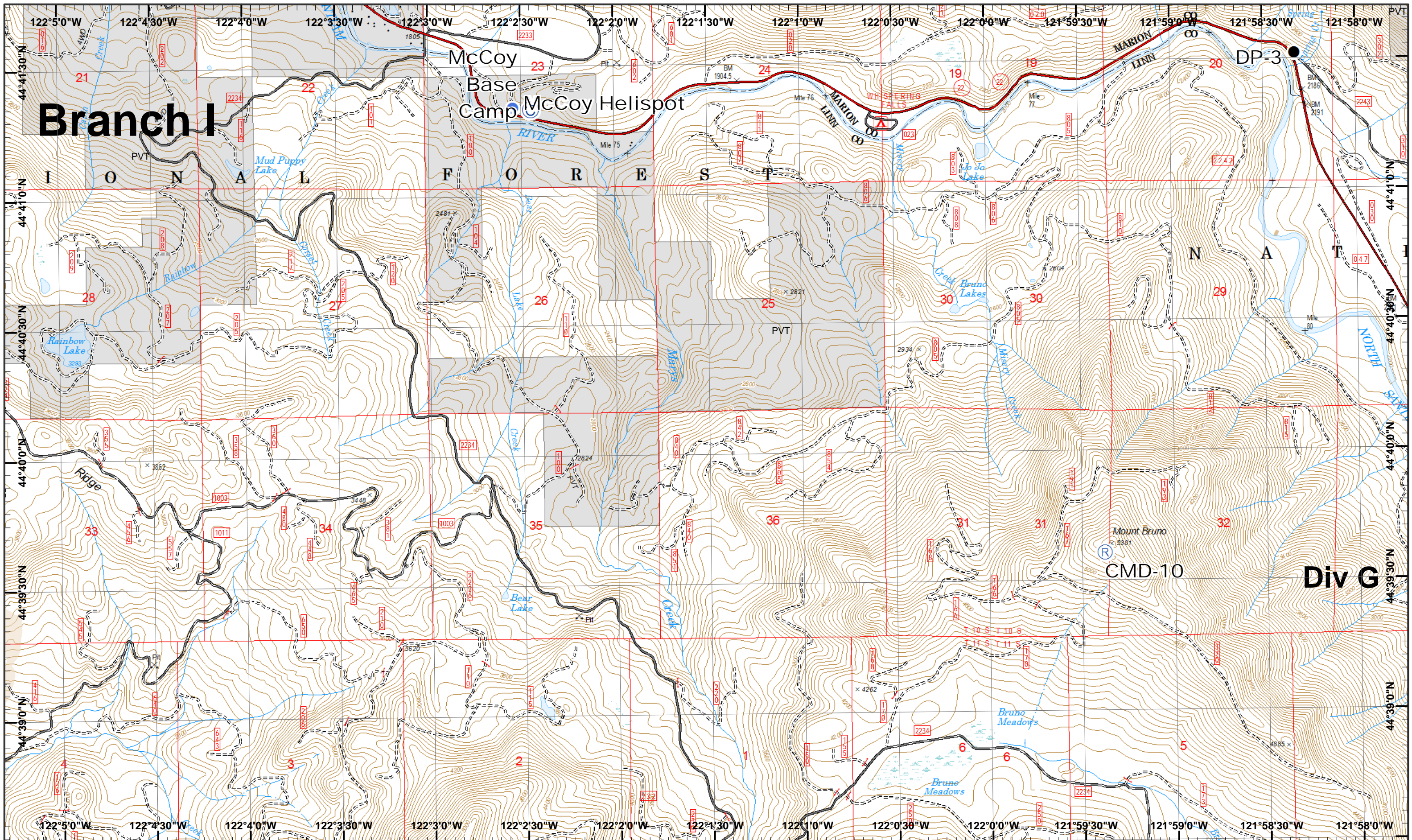






|    |    |
|----|----|
| 1  | 2  |
| 3  | 4  |
| 5  | 6  |
| 7  | 8  |
| 9  | 10 |
| 11 | 12 |
| 13 | 14 |





# Branch I

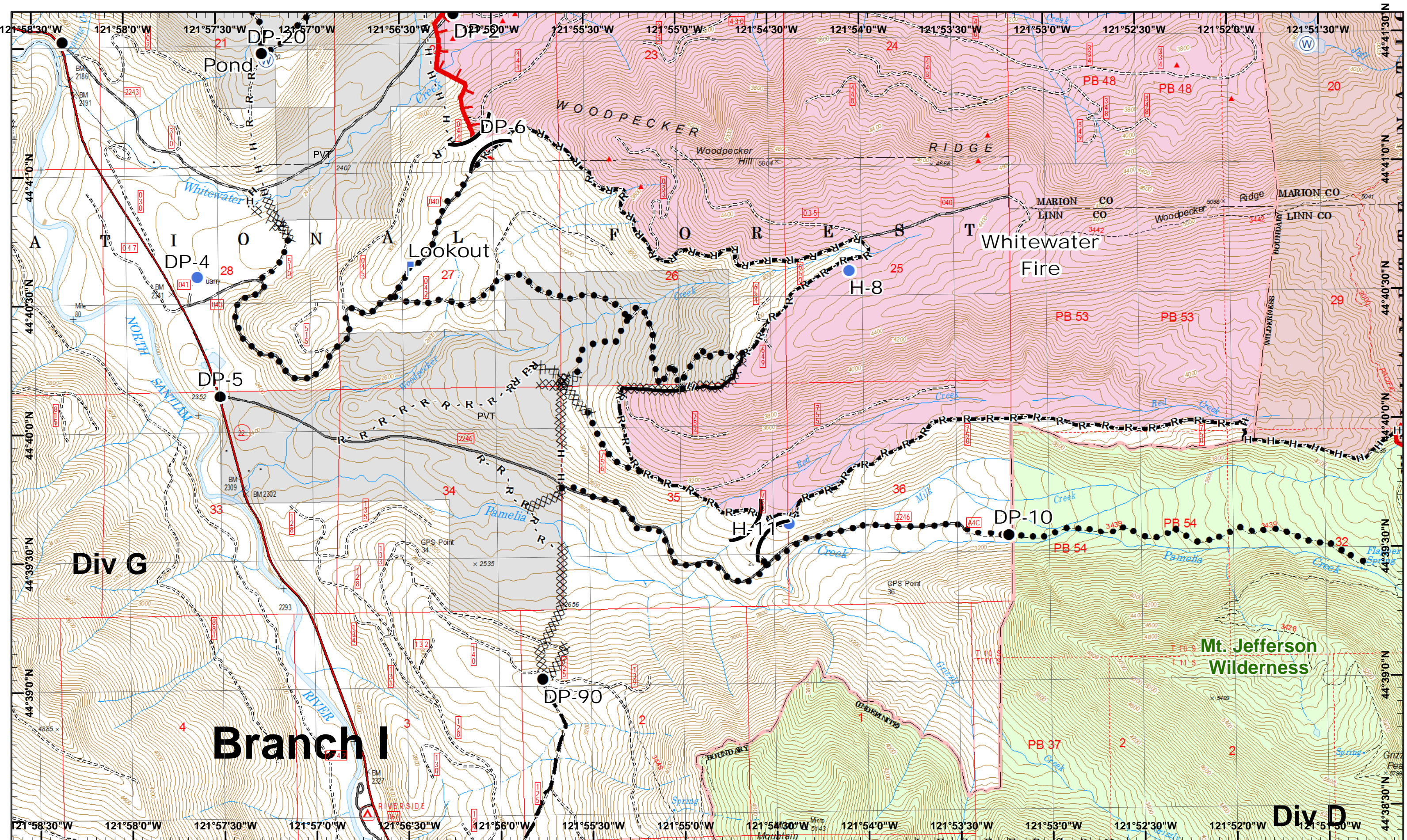
McCoy  
Base Camp  
McCoy Helispot

CMD-10

Div G



|    |    |
|----|----|
| 1  | 2  |
| 3  | 4  |
| 5  | 6  |
| 7  | 8  |
| 9  | 10 |
| 11 | 12 |
| 13 | 14 |



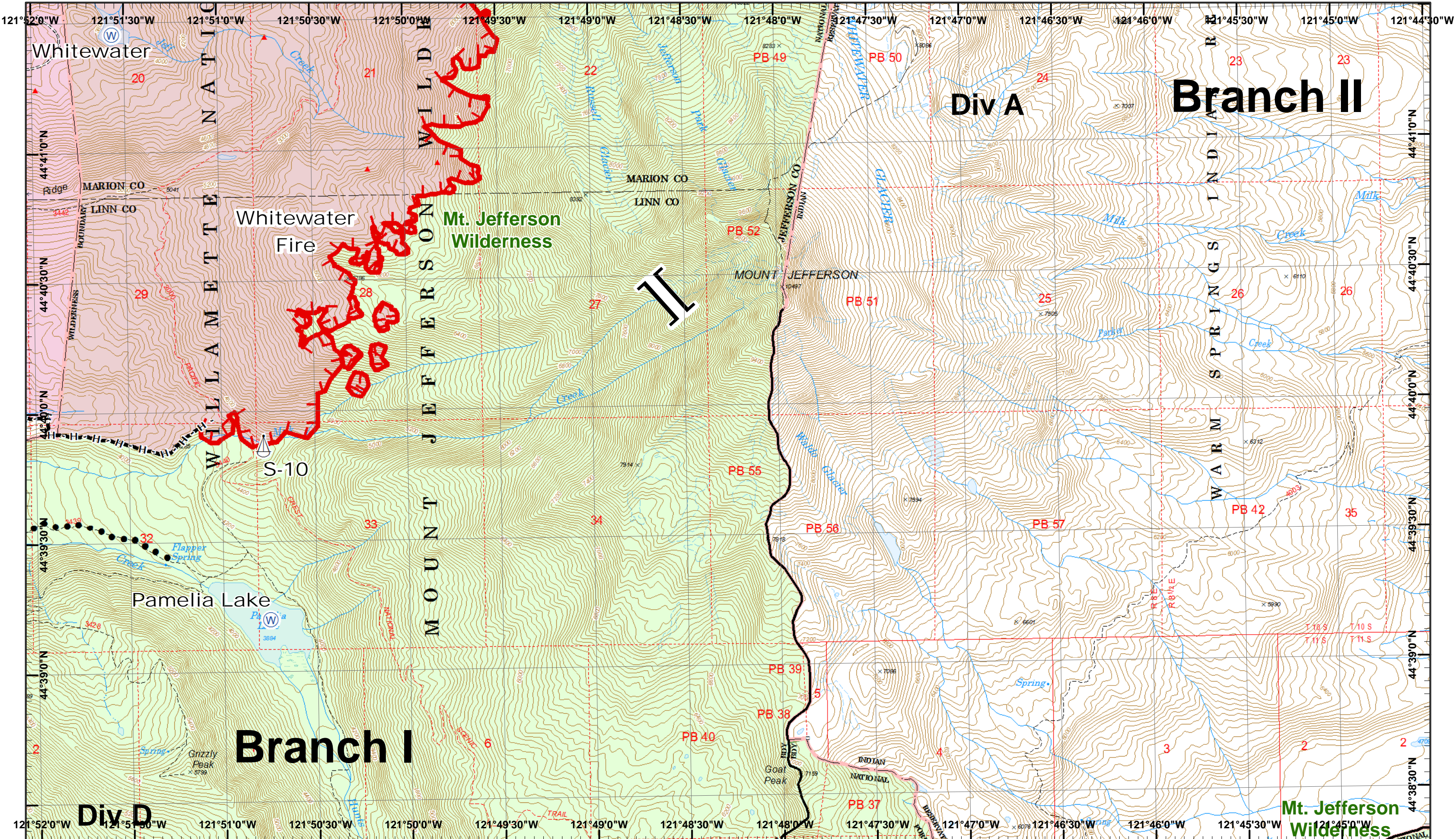
**Whitewater Incident**  
 September 2, 2017

IR 8/31/2017 @ 2043  
 Whitewater Fire - 10,445 Acres  
 Little Devil Fire - 599 Acres  
 French Fire - 2 Acres  
 Scorpion Fire - 183 Acres  
 Map Created 9/1/2017 8:11:14 PM RDC

- Drop Point
- IR Heat Source
- Water Source
- Completed
- Completed Hand
- Planned Fire Line
- Helispot
- Lookout
- Uncontrolled Fire
- Completed Dozer
- Road as Line
- Planned Secondary Line

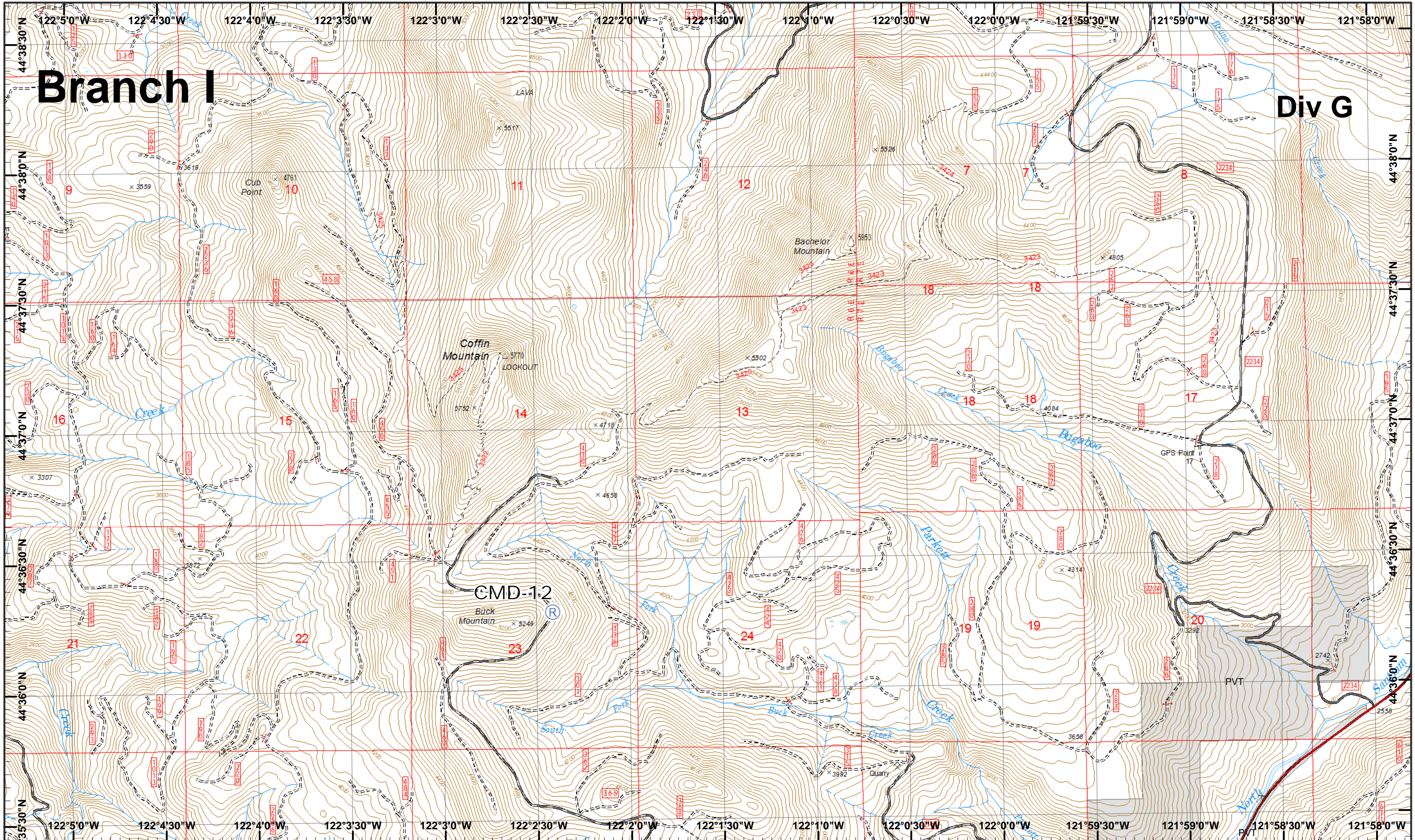


|    |    |
|----|----|
| 1  | 2  |
| 3  | 4  |
| 5  | 6  |
| 7  | 8  |
| 9  | 10 |
| 11 | 12 |
| 13 | 14 |



# Branch I

# Div G



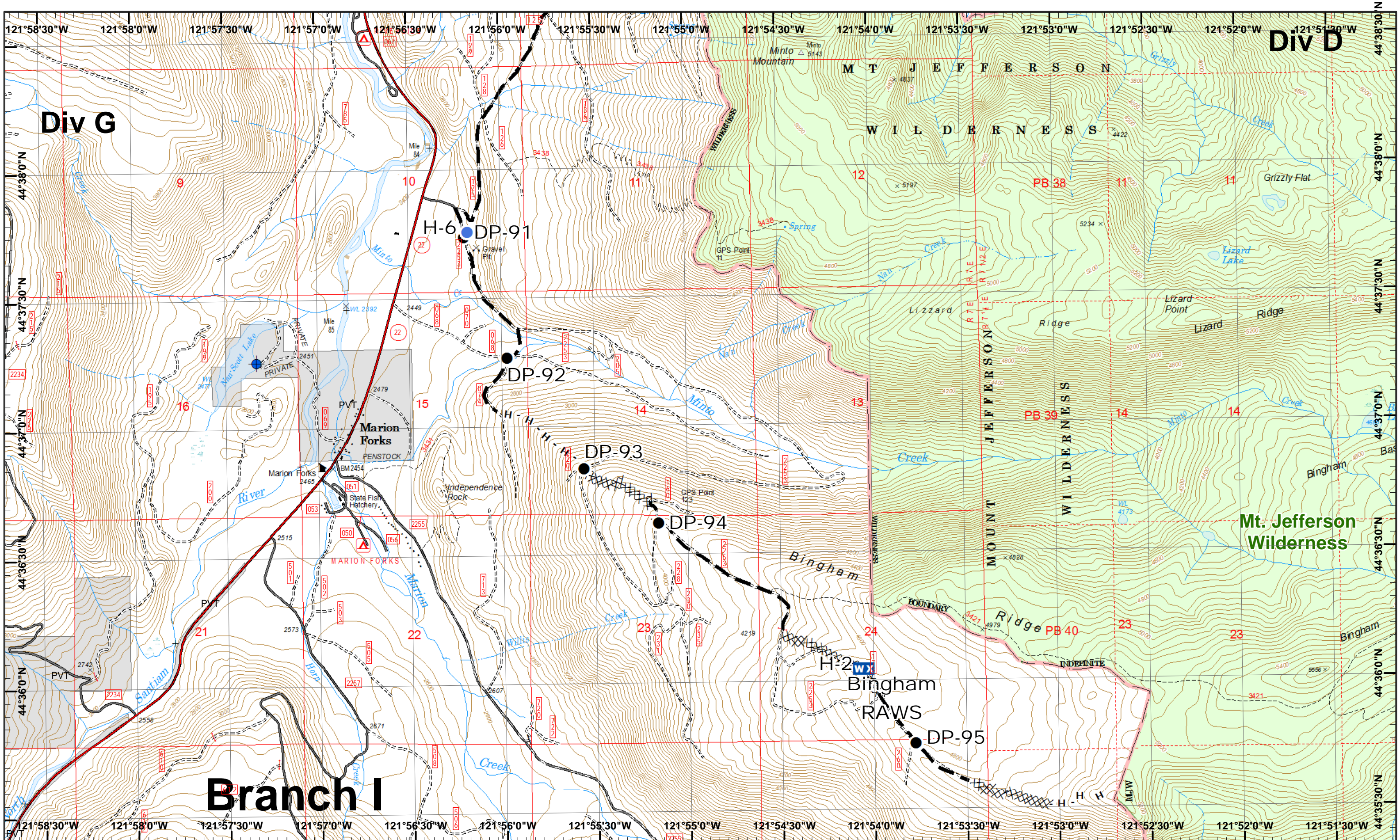
**Whitewater Incident**  
September 2, 2017

IR 8/31/2017 @ 2043  
Whitewater Fire - 10,445 Acres  
Little Devil Fire - 599 Acres  
French Fire - 2 Acres  
Scorpion Fire - 183 Acres  
Map Created 9/1/2017 8:11:34 PM RDC



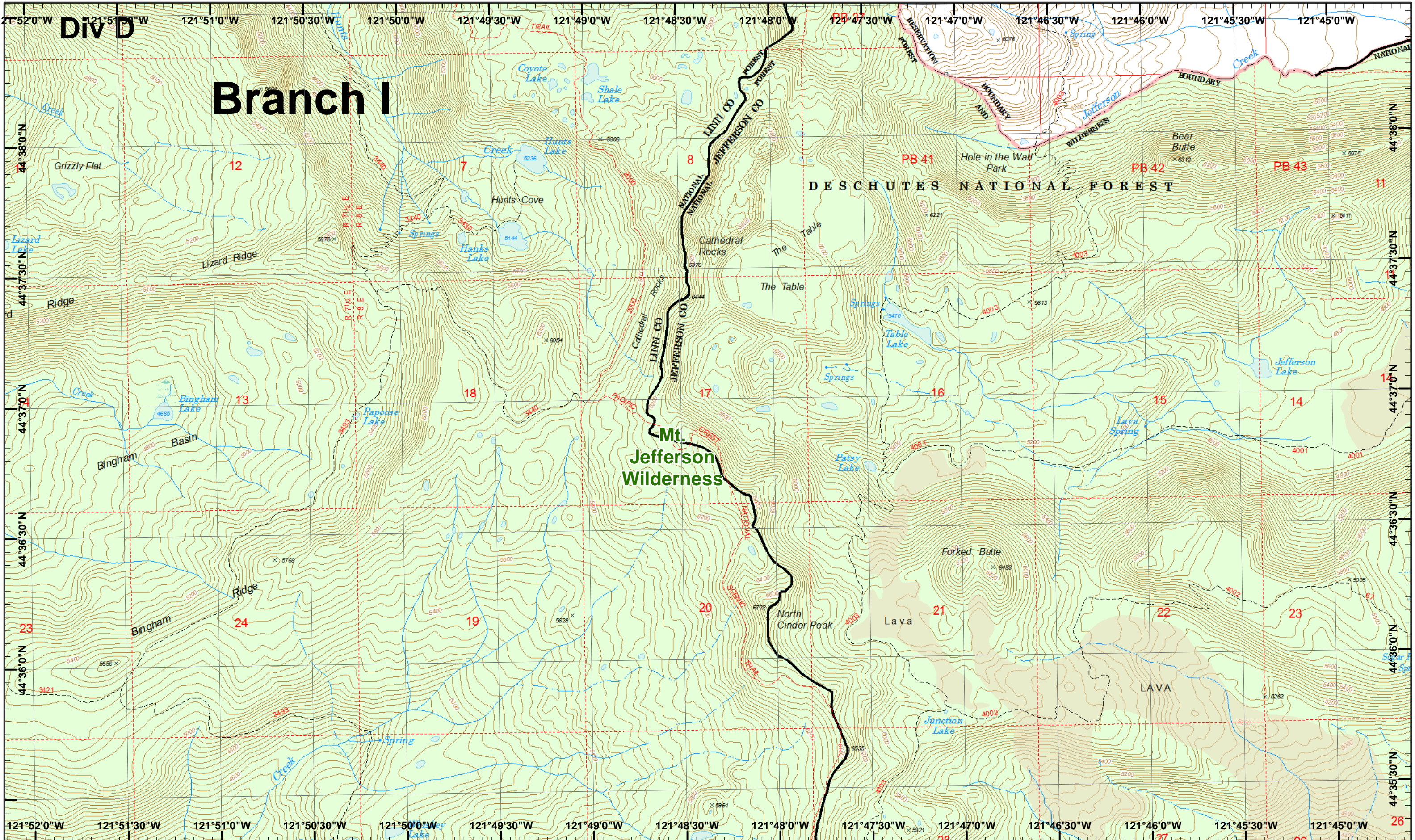
|    |    |
|----|----|
| 1  | 2  |
| 3  | 4  |
| 5  | 6  |
| 7  | 8  |
| 9  | 10 |
| 11 | 12 |
| 13 | 14 |





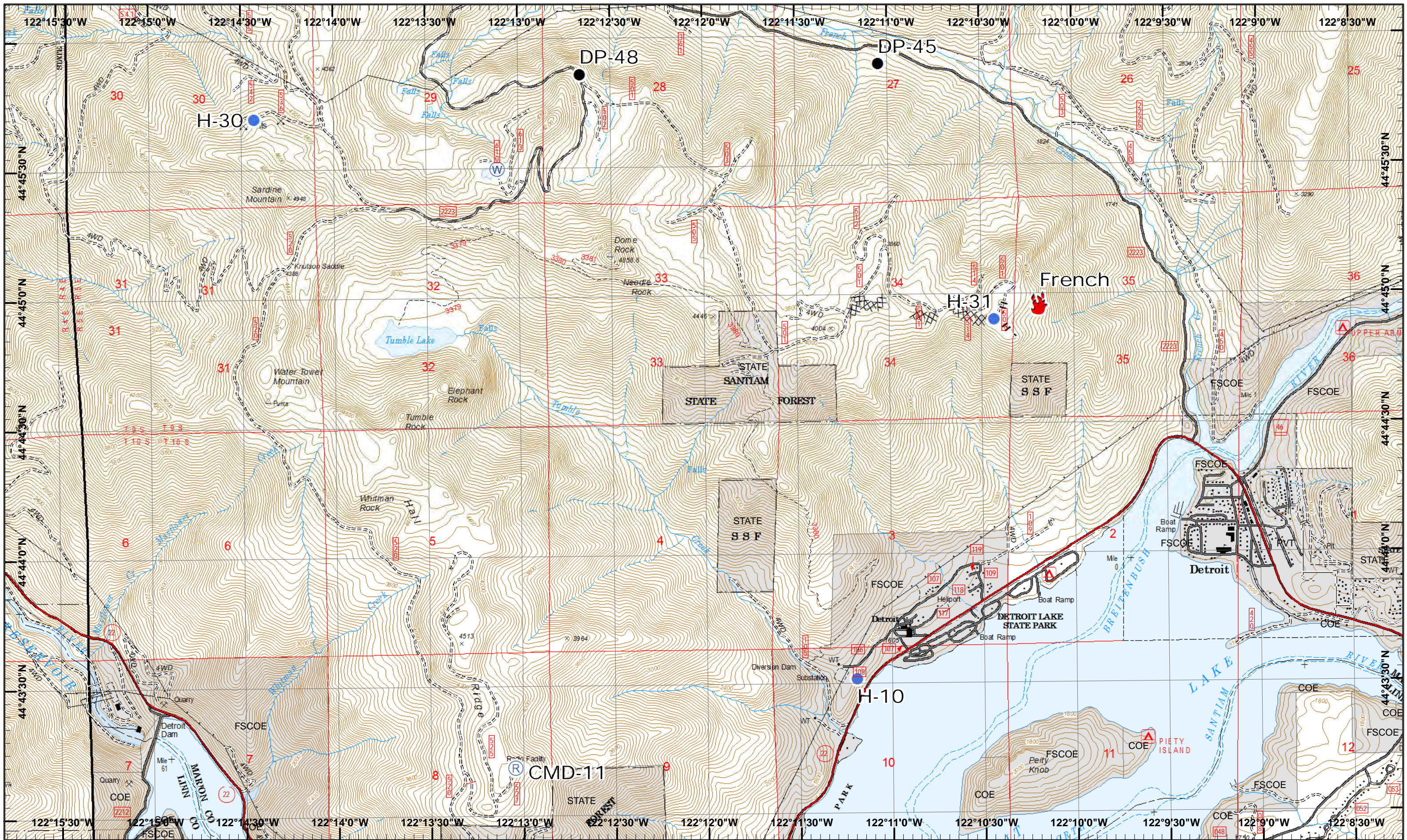
0 0.25 0.5 Miles

Dip Site   
 Helispot   
 Completed Dozer   
 Planned Fire Line  
 Drop Point   
 Mobile Weather   
 Completed Hand



|    |    |
|----|----|
| 1  | 2  |
| 3  | 4  |
| 6  | 7  |
| 9  | 10 |
| 12 | 13 |





**Whitewater Incident**  
 September 2, 2017

IR 8/31/2017 @ 2043  
 Whitewater Fire - 10,445 Acres  
 Little Devil Fire - 599 Acres  
 French Fire - 2 Acres  
 Scorpion Fire - 183 Acres  
 Map Created 9/1/2017 8:12:10 PM RDC



- Drop Point
- 🔥 Fire Location
- Helispot
- Ⓡ Repeater
- Ⓜ Water Source
- XXXX Completed Dozer
- H - Completed Hand



|    |    |
|----|----|
| 1  | 2  |
| 3  | 4  |
| 5  | 6  |
| 7  | 8  |
| 9  | 10 |
| 11 | 12 |
| 13 | 14 |