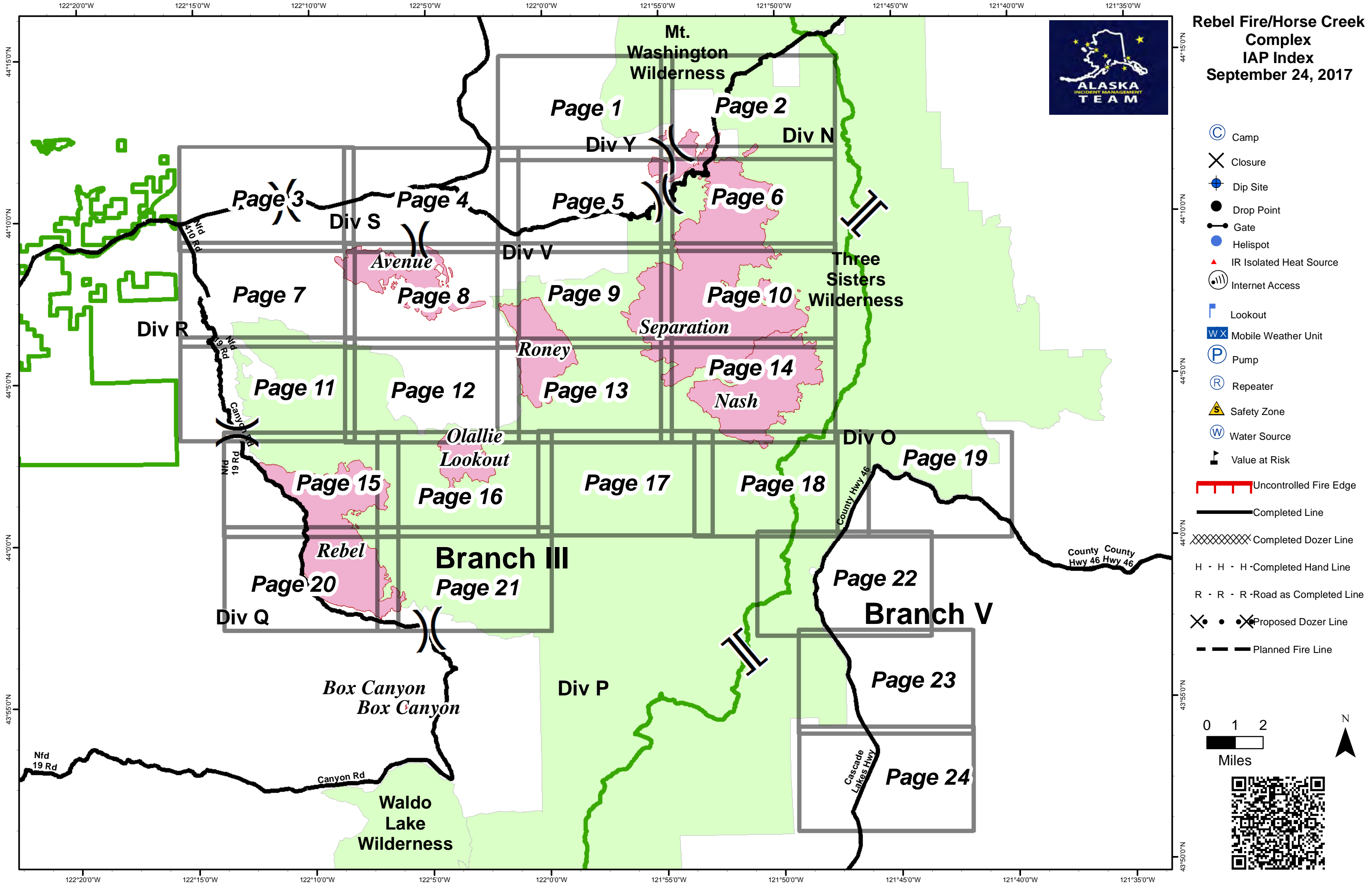
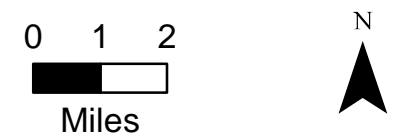
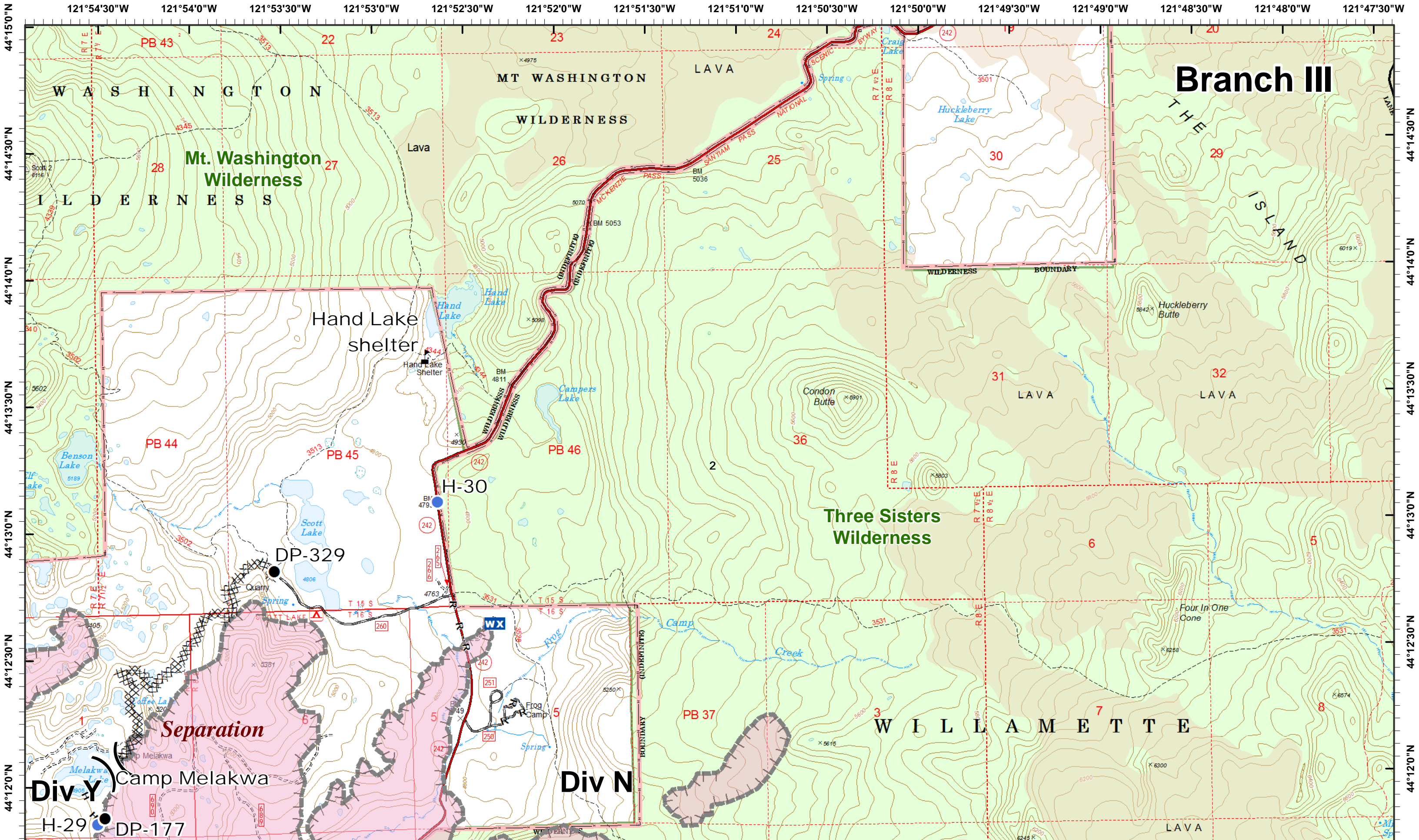


**Rebel Fire/Horse Creek Complex
IAP Index
September 24, 2017**



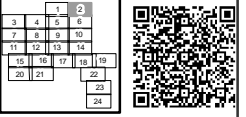
- Camp
- Closure
- Dip Site
- Drop Point
- Gate
- Helispot
- IR Isolated Heat Source
- Internet Access
- Lookout
- Mobile Weather Unit
- Pump
- Repeater
- Safety Zone
- Water Source
- Value at Risk
- Uncontrolled Fire Edge
- Completed Line
- Completed Dozer Line
- H - H - H - Completed Hand Line
- R - R - R - Road as Completed Line
- Proposed Dozer Line
- Planned Fire Line

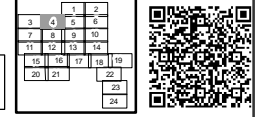
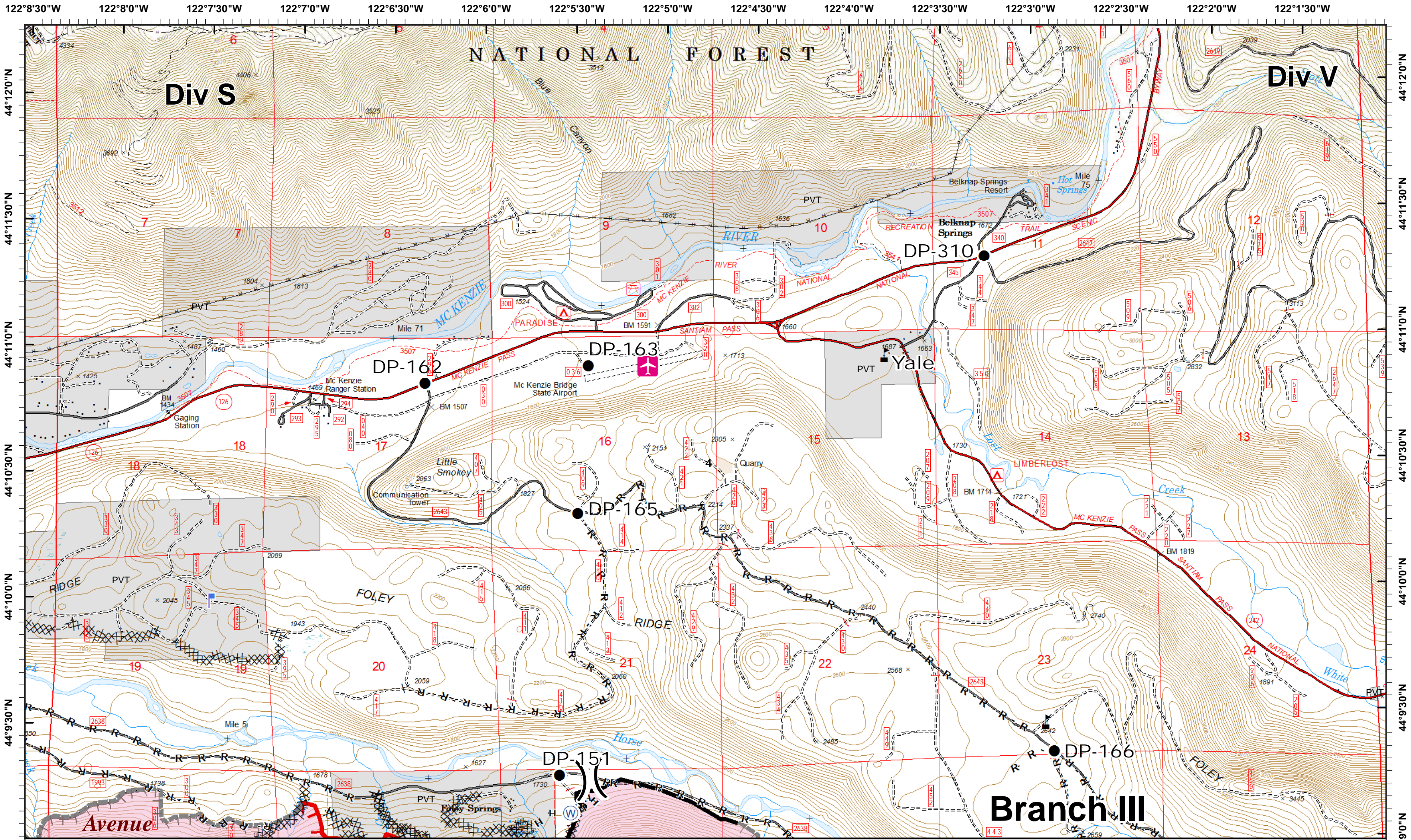


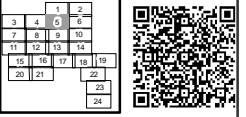
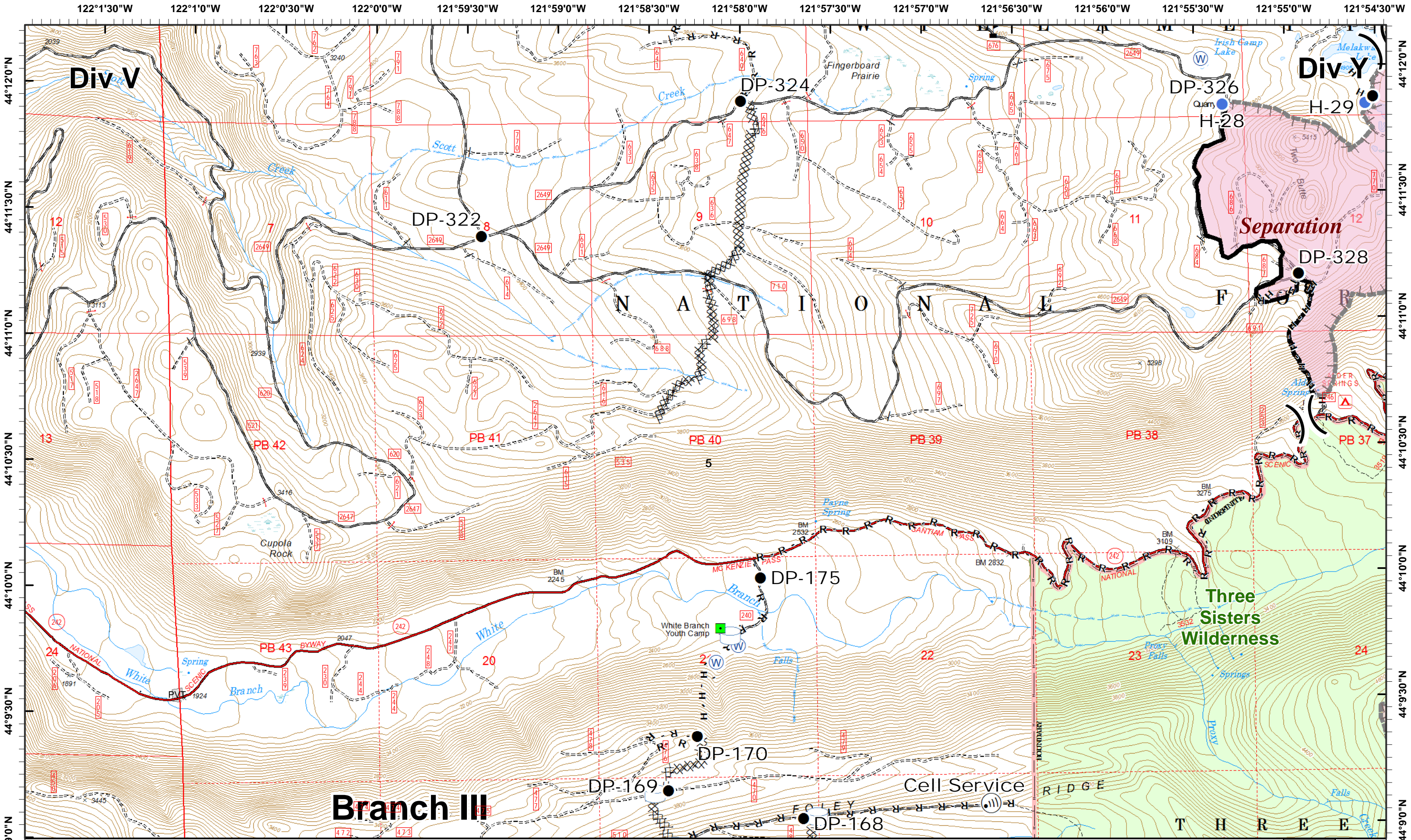


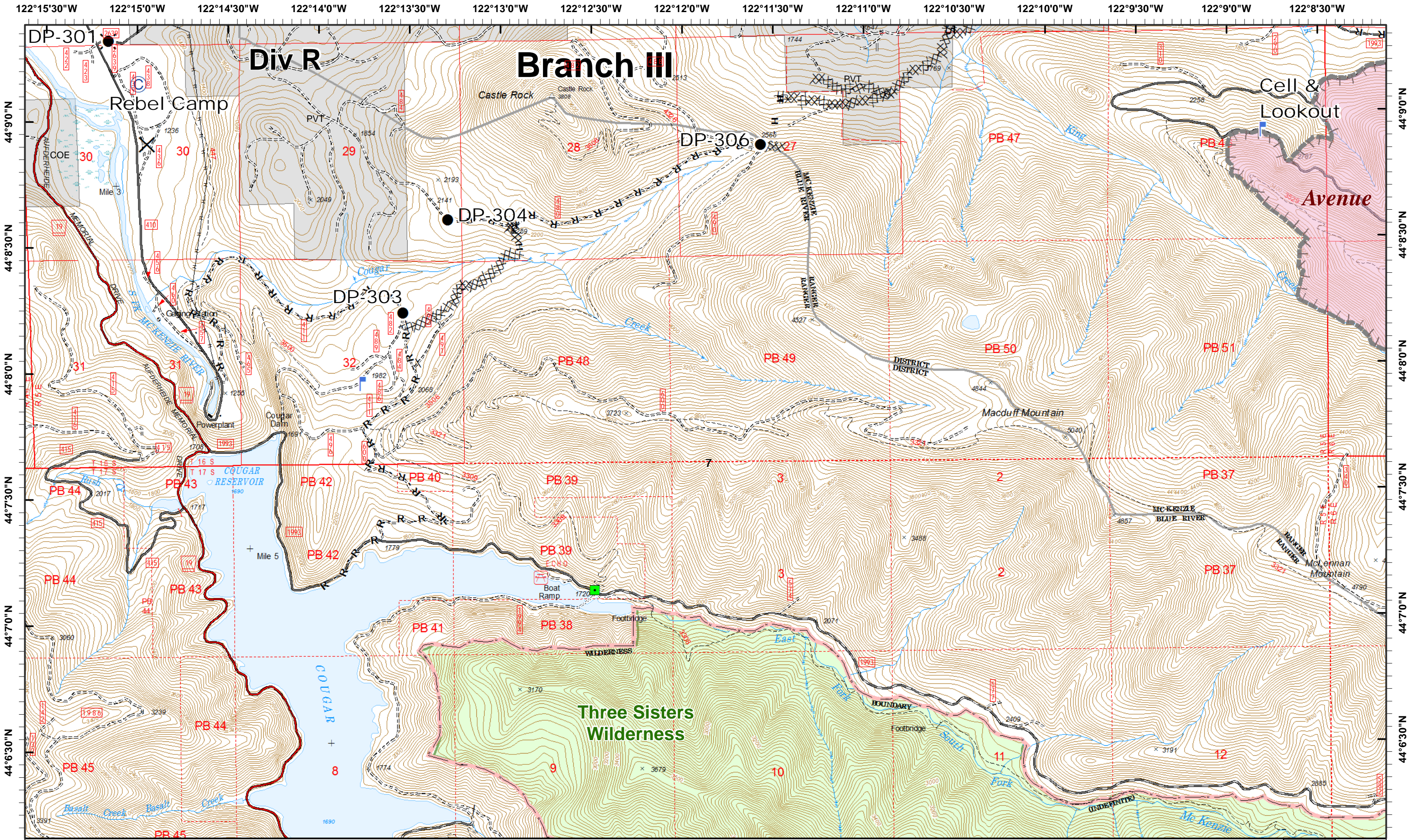
- Drop Point
- Helispot
- WX Mobile Weather
- Value at Risk
- Minimal Threat/Limited Action

- XXXX Completed Dozer Line
- H - Completed Hand Line
- R - Road as Completed Line

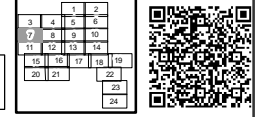


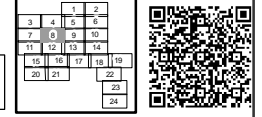
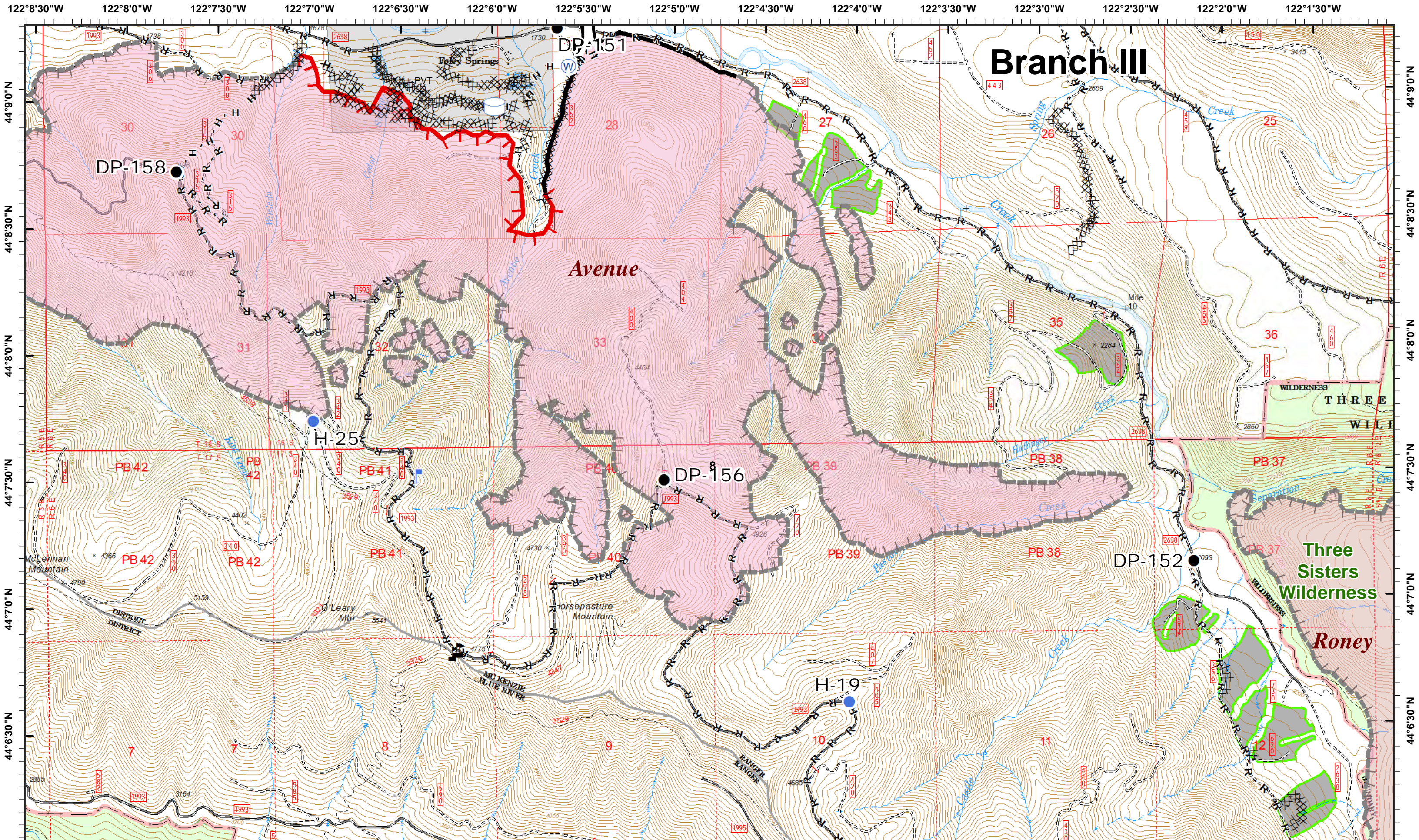


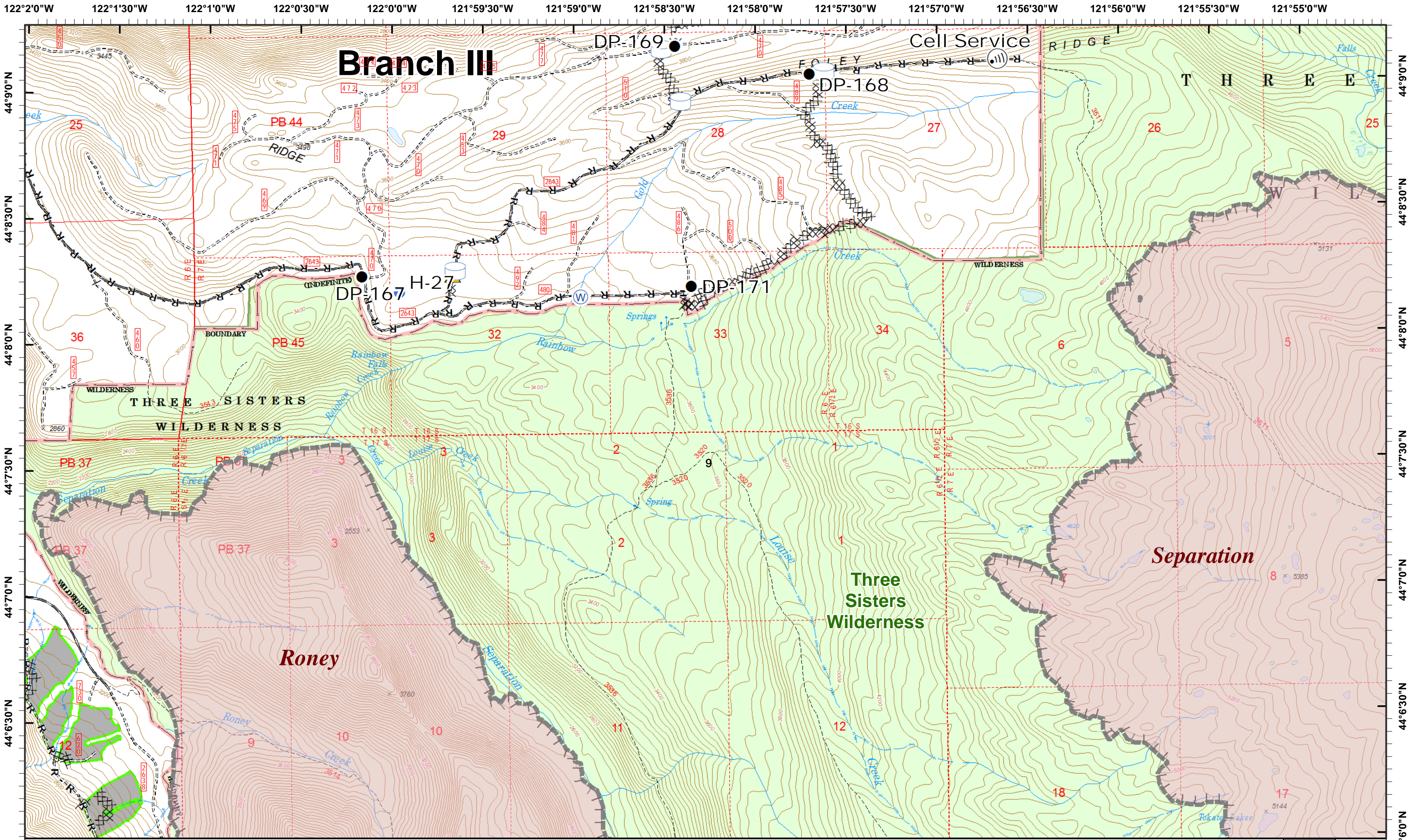




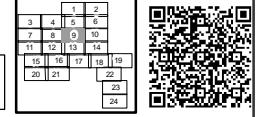
- C Camp
- Drop Point
- Lookout
- Completed Dozer Line
- Road as Completed Line
- Landmark
- Minimal Threat/Limited Action
- Completed Hand Line
- X Closure







- Drop Point
- Ⓜ Internet Access
- Ⓜ Water Source
- Ⓜ Minimal Threat/Limited Action H - Completed Hand Line
- Pre-Harvest Timber Sales
- Helispot
- ⚠ Safety Zone
- Ⓜ Water Tank
- Ⓜ Completed Dozer Line
- R - Road as Completed Line



Branch III

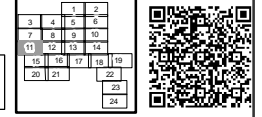
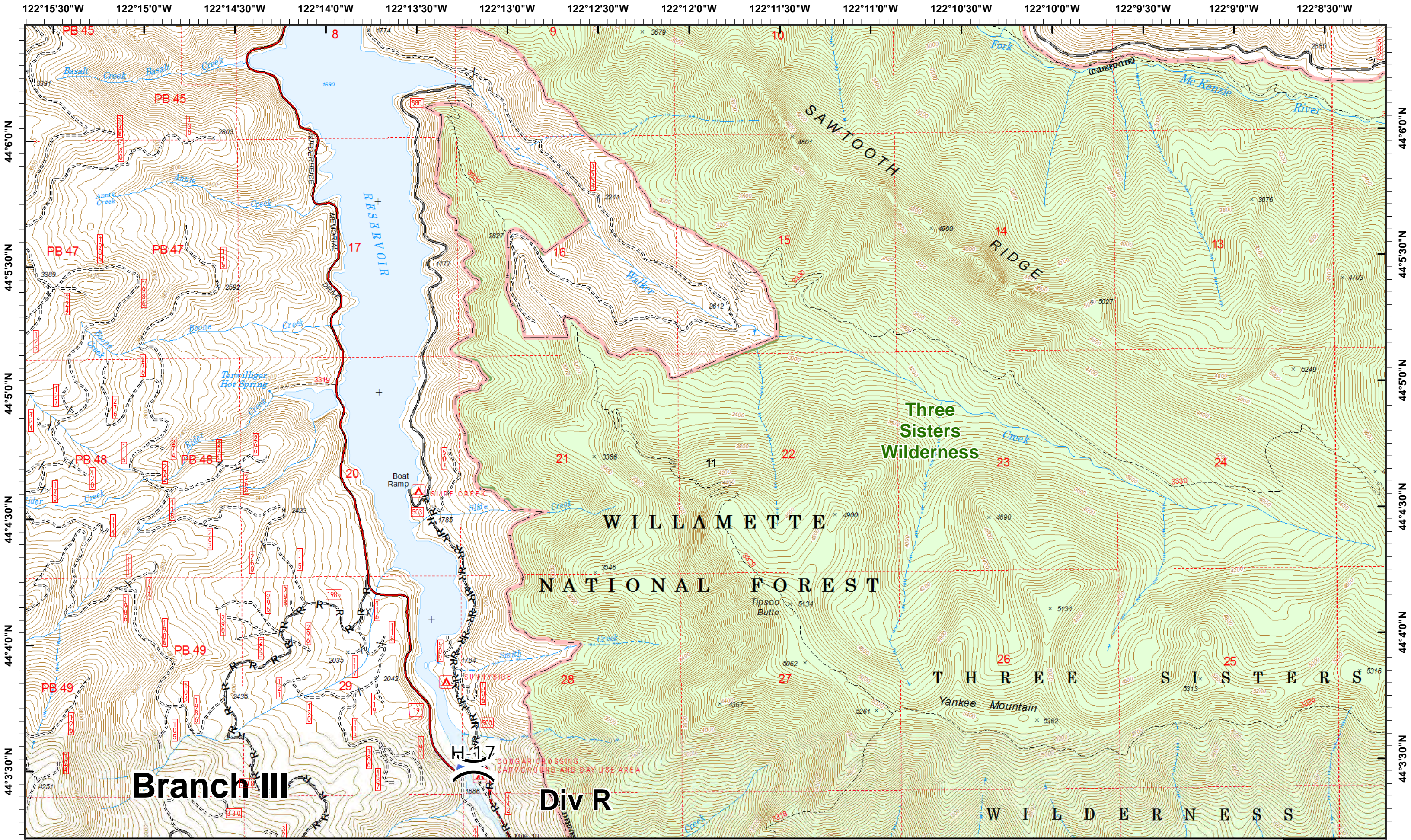
Three Sisters Wilderness

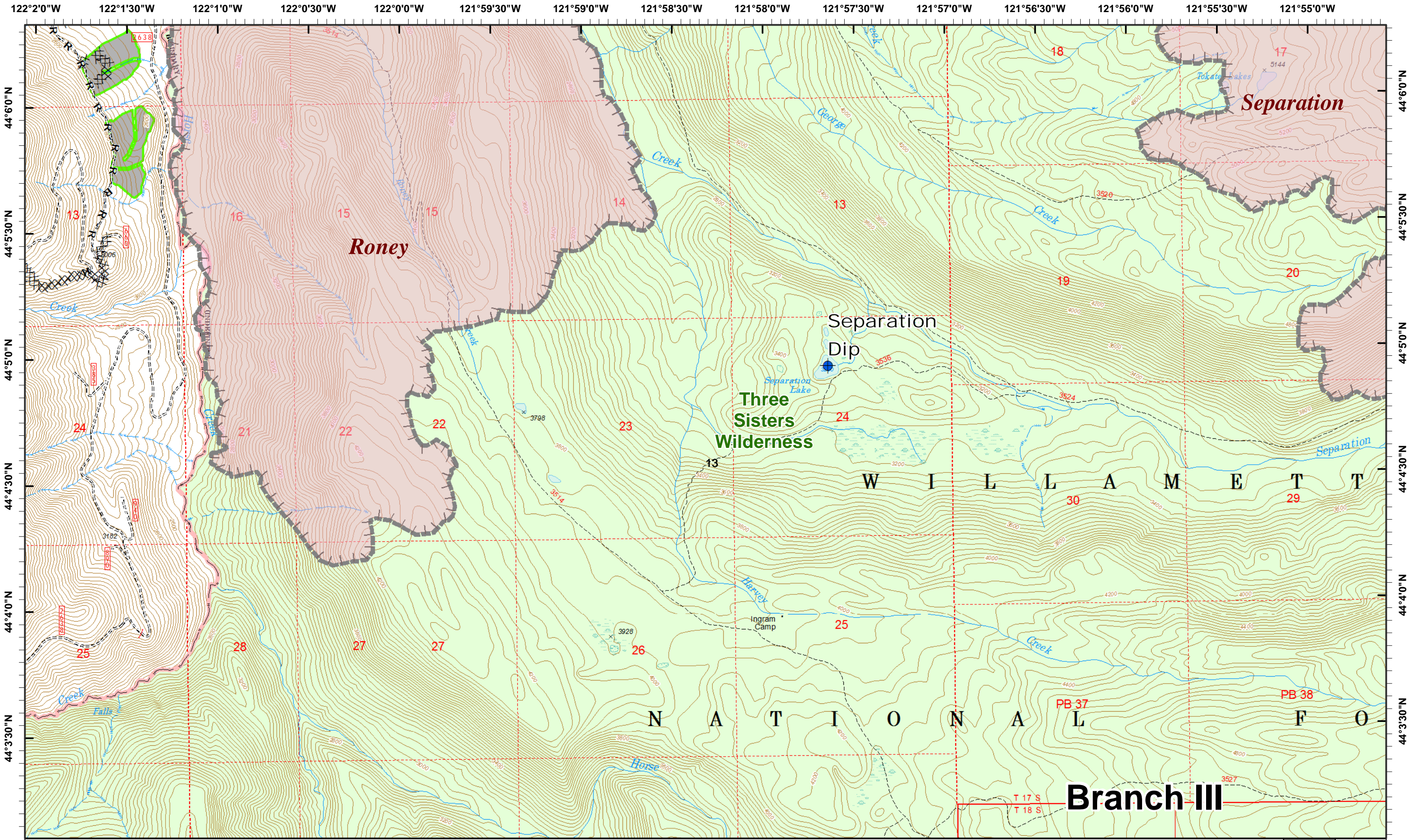
Separation

Nash

Div O



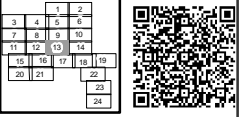


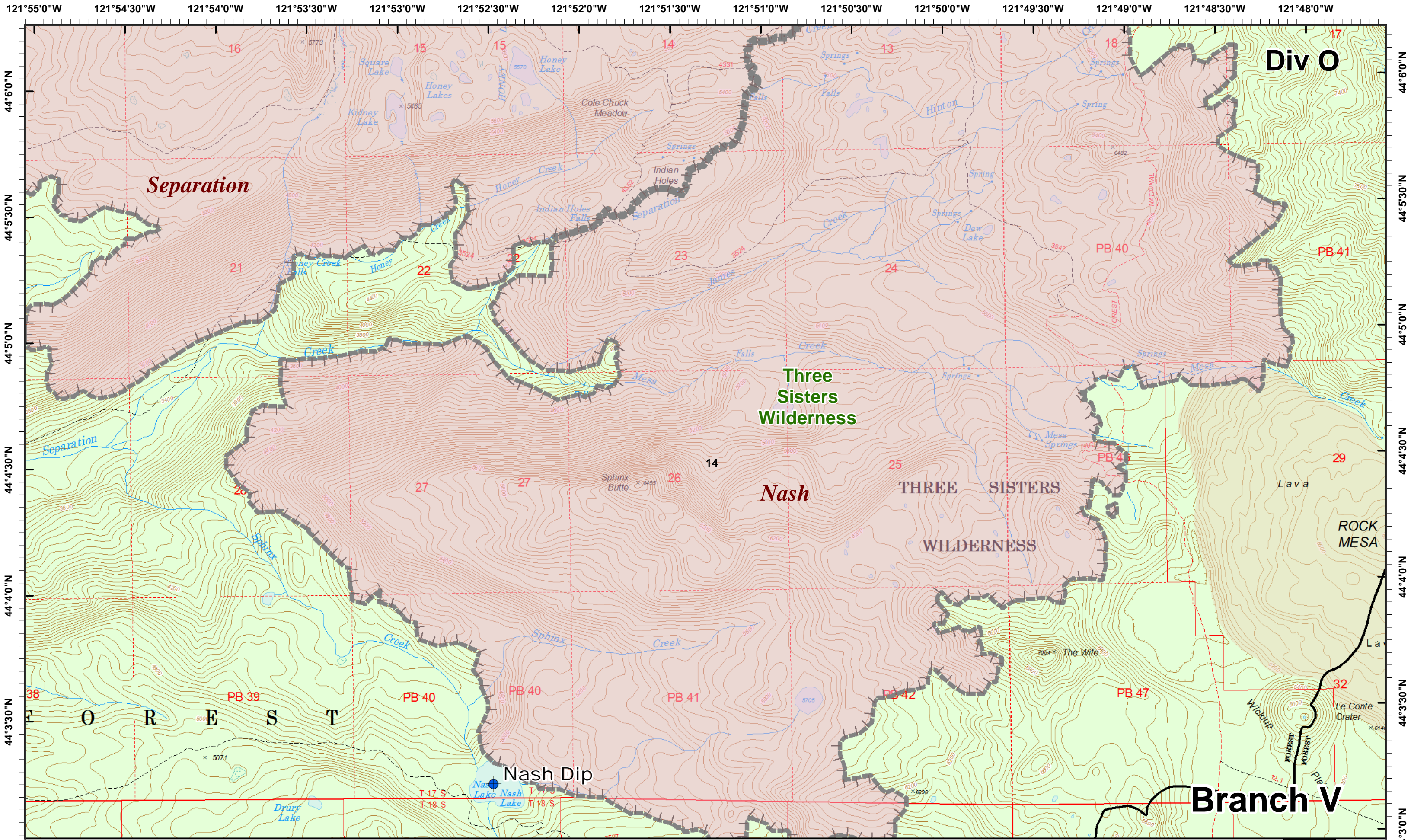


Dip Site

Completed Dozer Line R · Road as Completed Line

Minimal Threat/Limited Action H · Completed Hand Line Pre-Harvest Timber Sales





Separation

Three Sisters Wilderness

Nash
THREE SISTERS WILDERNESS

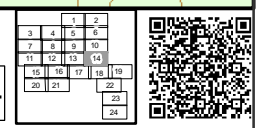
Div O

Branch V

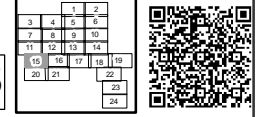
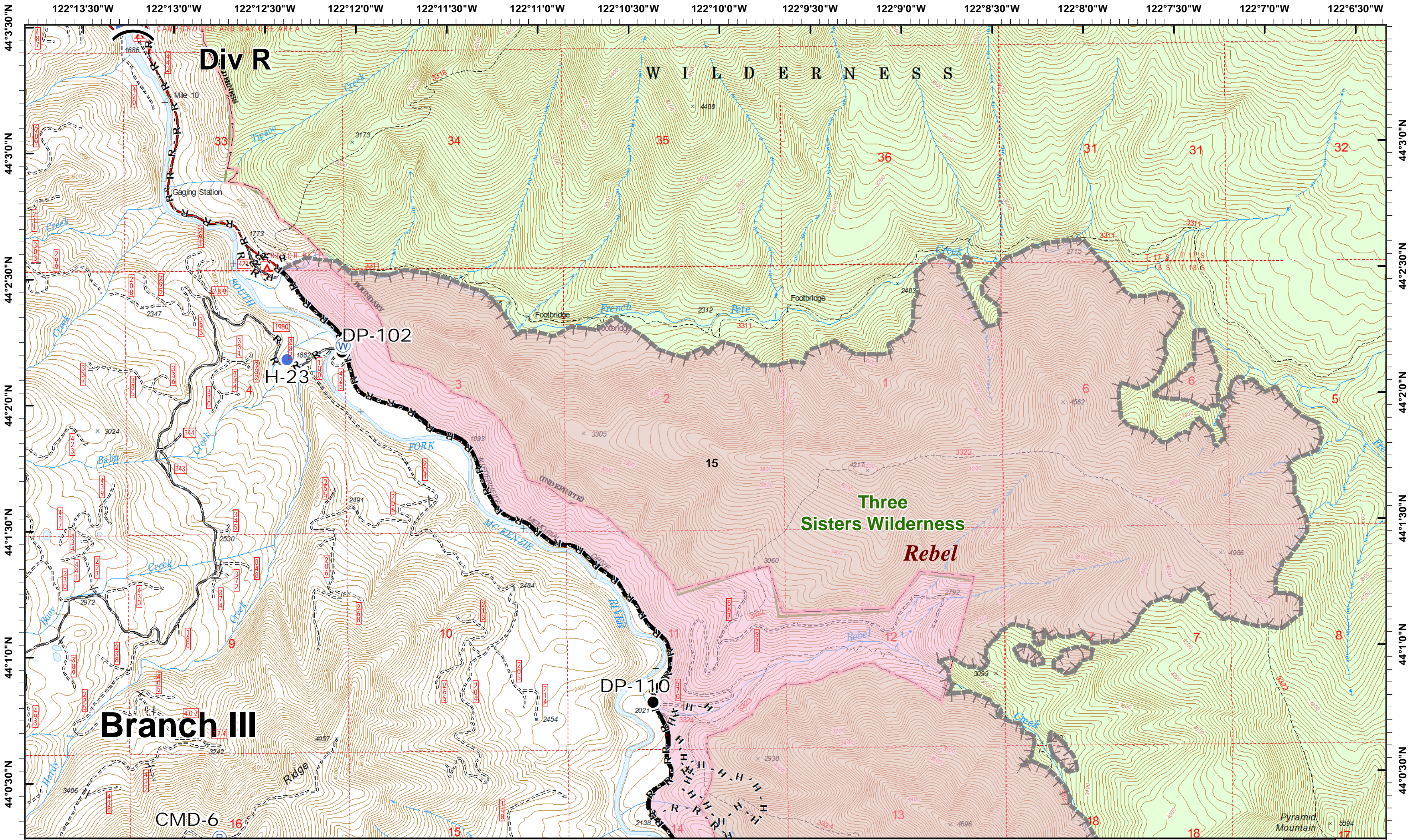


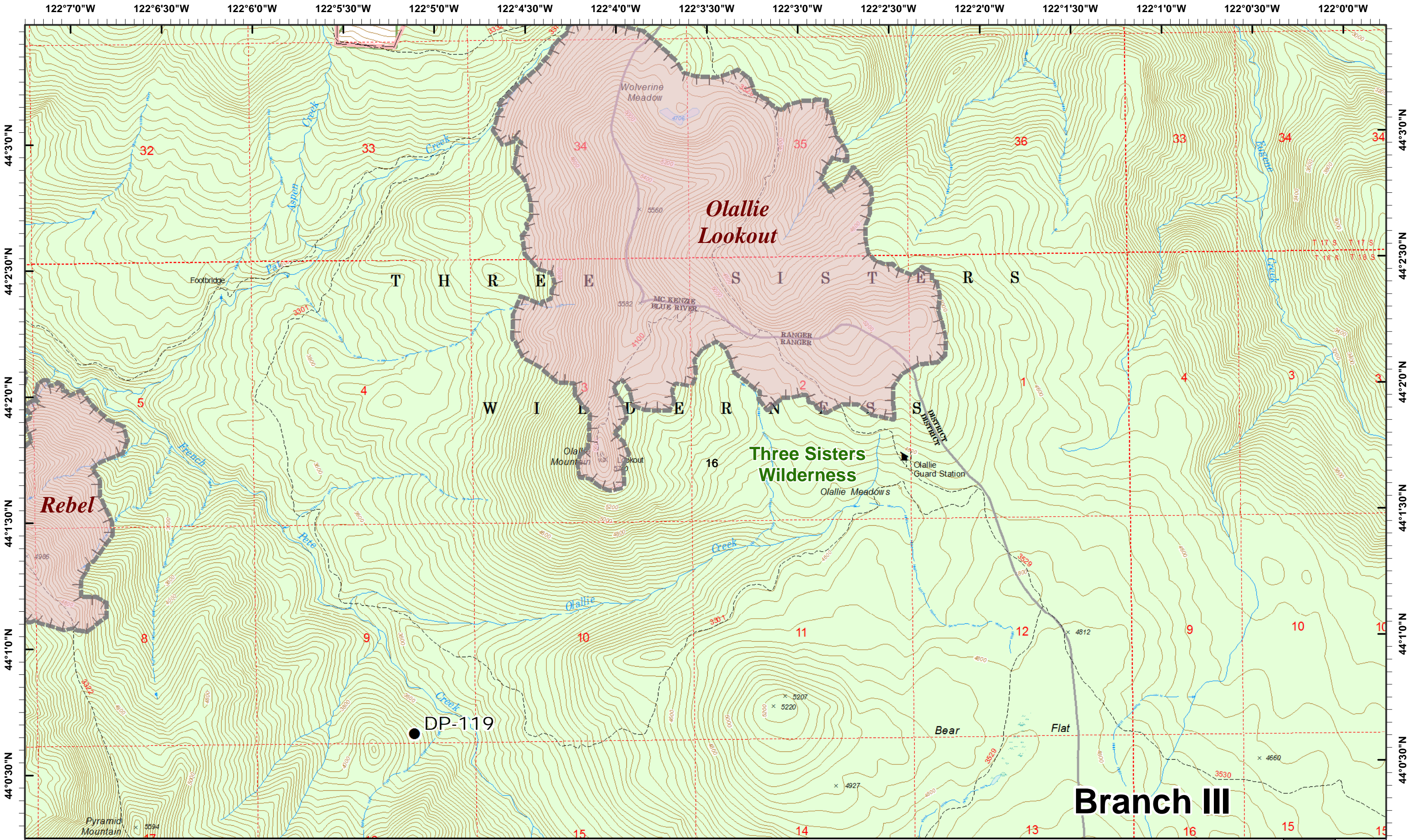
Dip Site

Minimal Threat/Limited Action



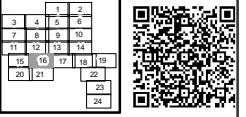
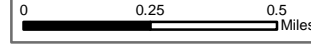
1	2	3	4	5
6	7	8	9	10
11	12	13	14	15
16	17	18	19	20
21	22	23	24	25

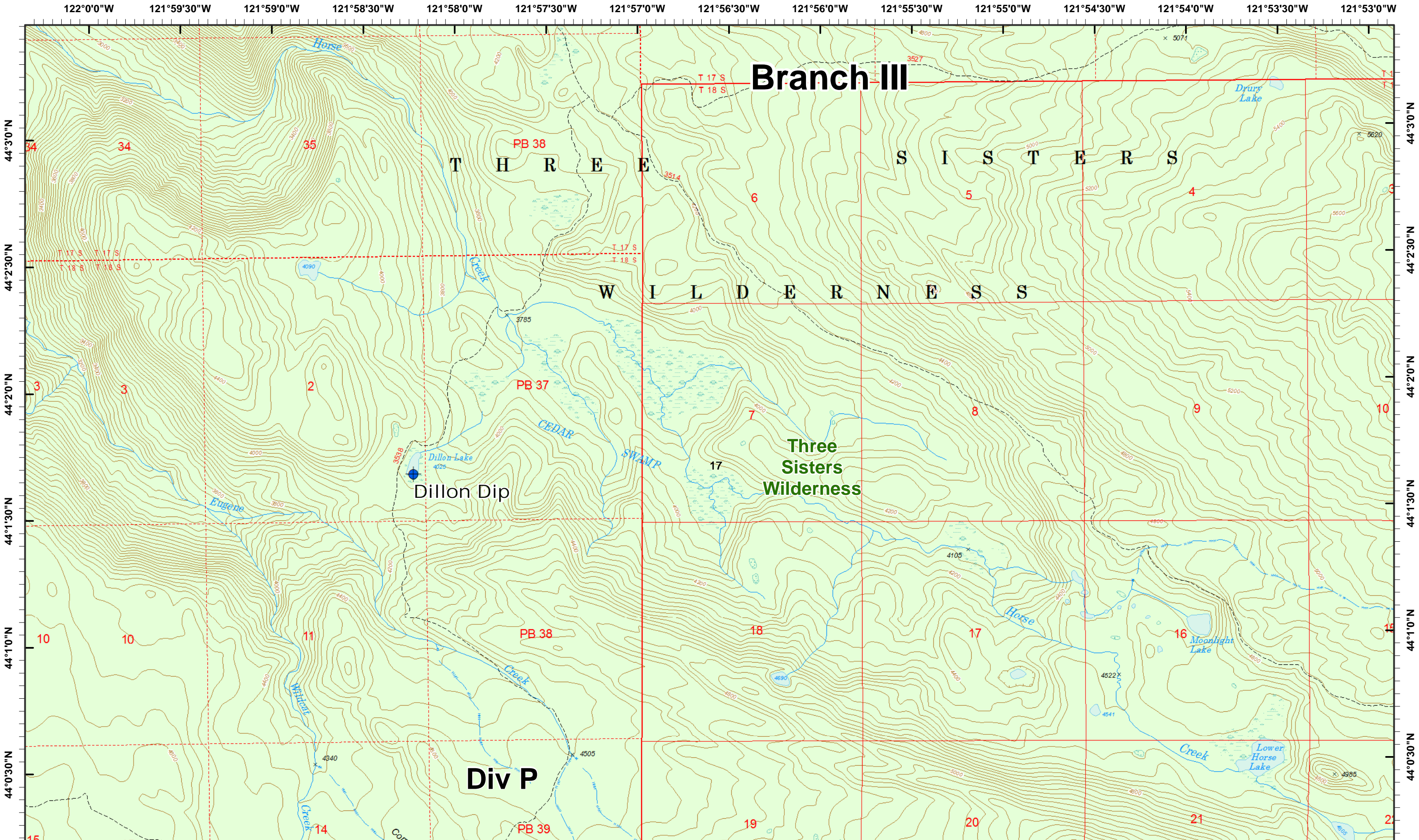




● Drop Point

▬ Minimal Threat/Limited Action





Branch III

T H R E E S I S T E R S

W I L D E R N E S S

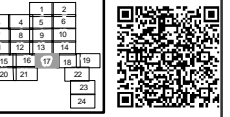
Three Sisters Wilderness

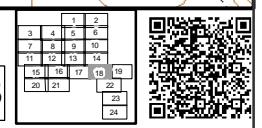
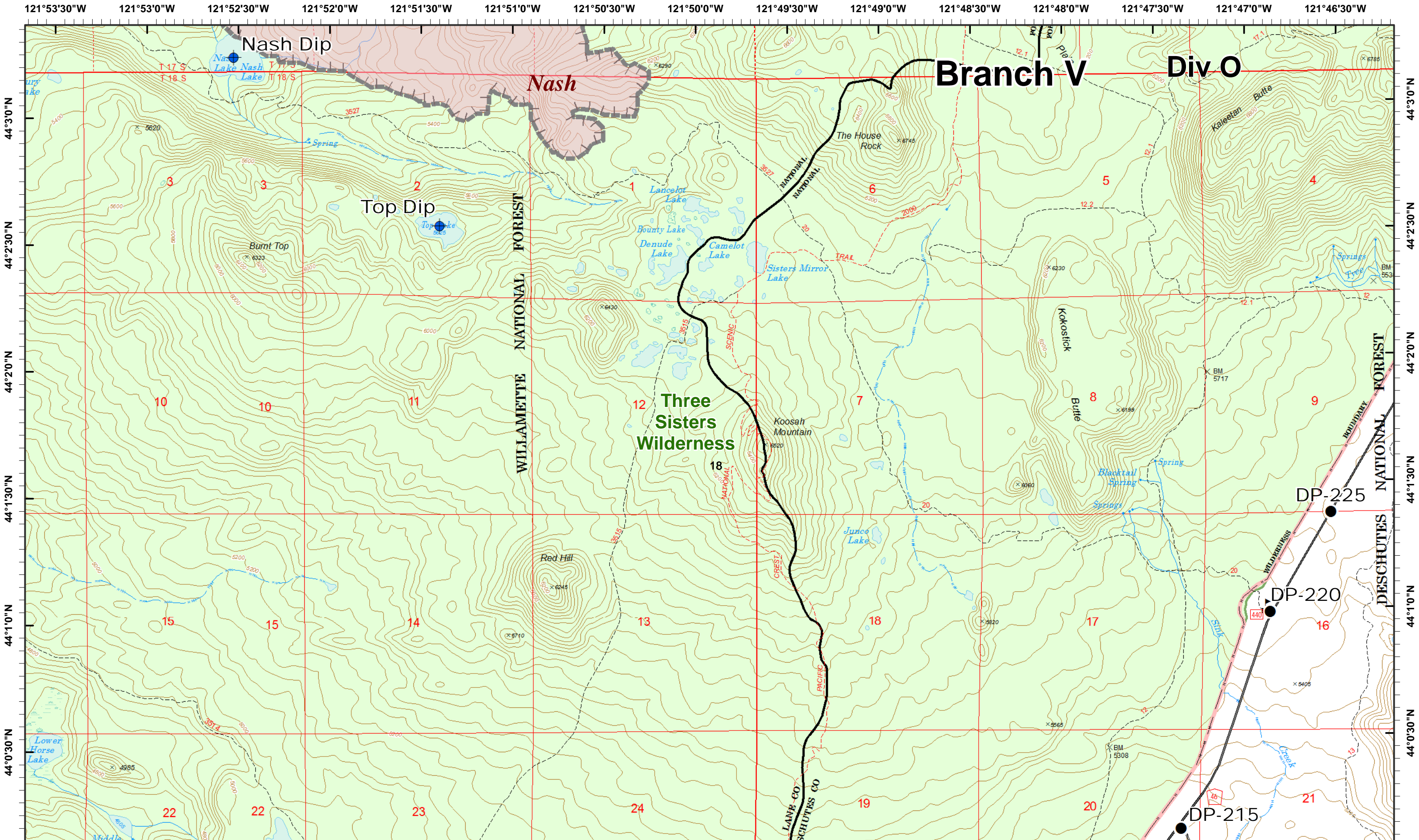
Dillon Dip

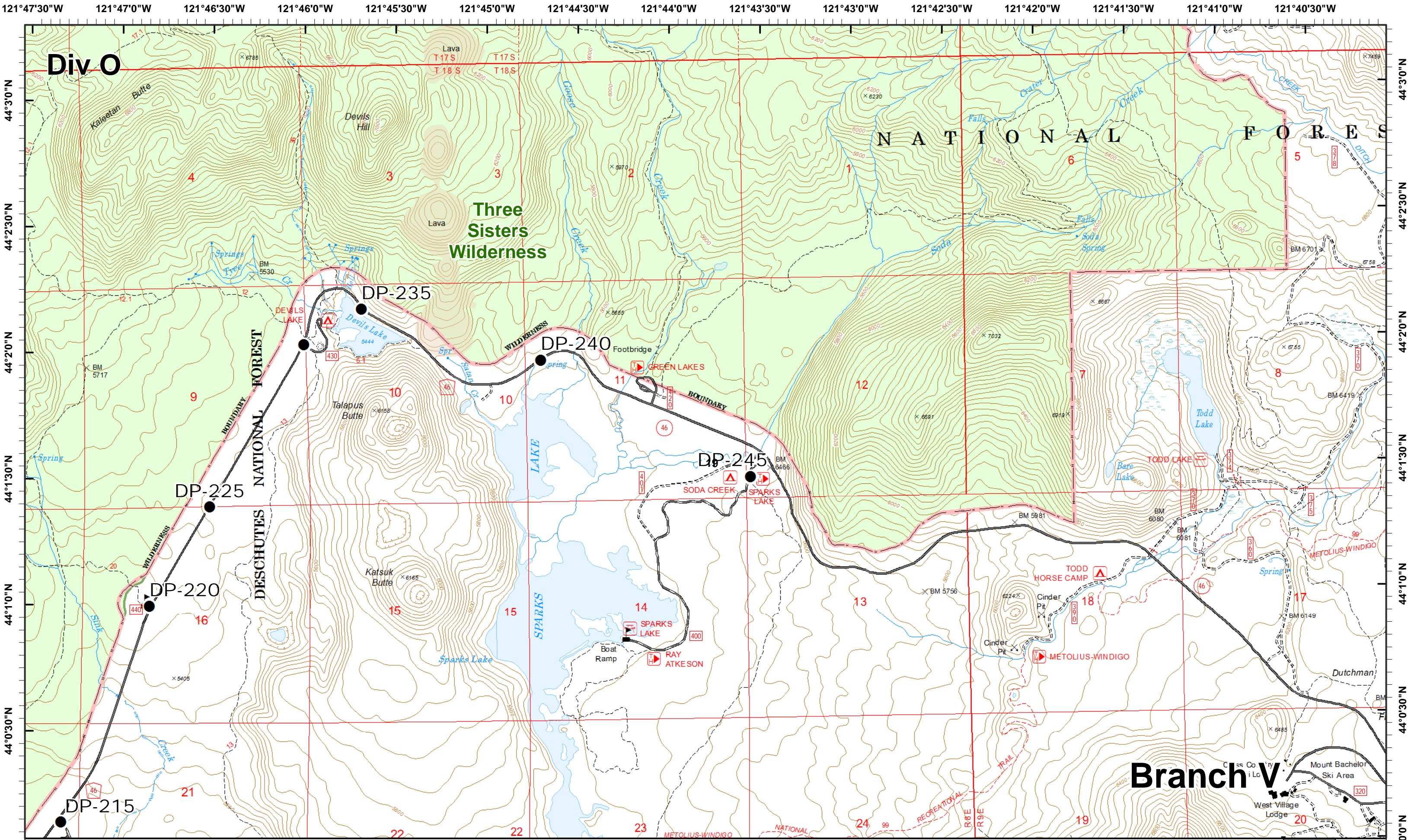
Div P



Dip Site







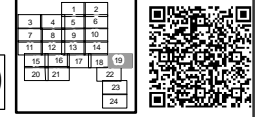
Div O

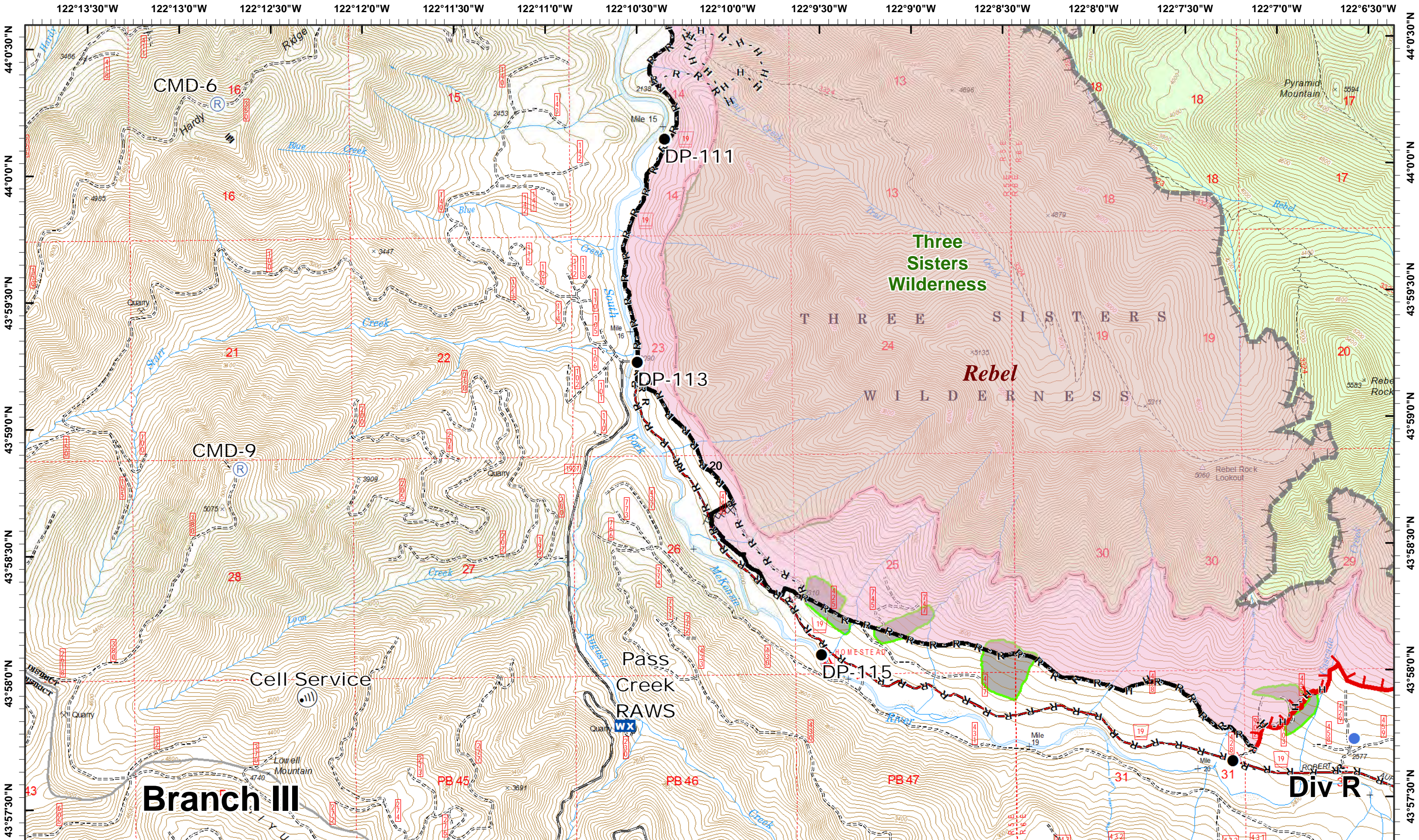
NATIONAL FOREST

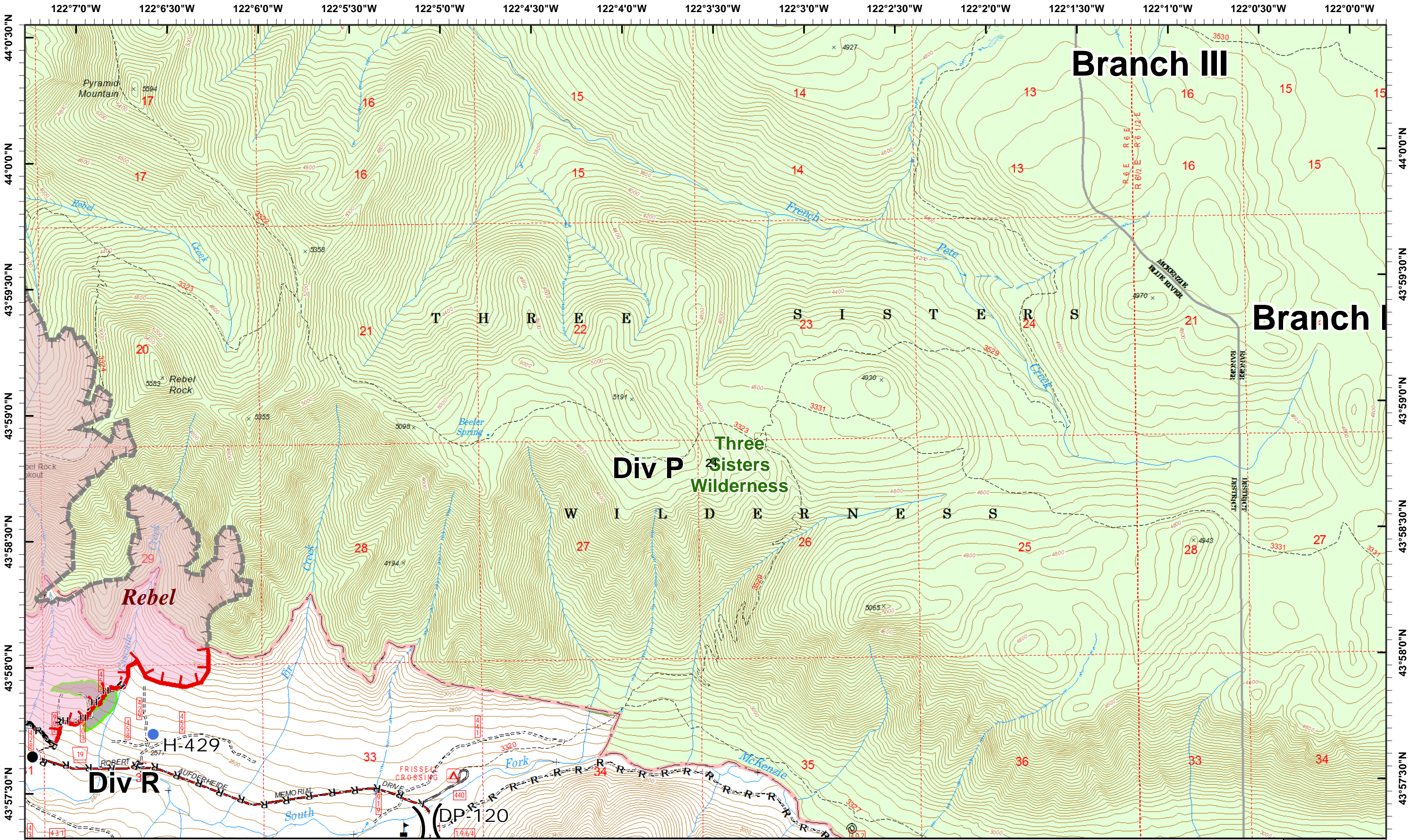
Three Sisters Wilderness

DESCHUTES NATIONAL FOREST

Branch V







Branch III

Branch I

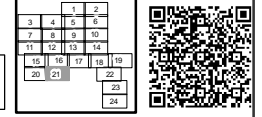
Div P
Three Sisters Wilderness

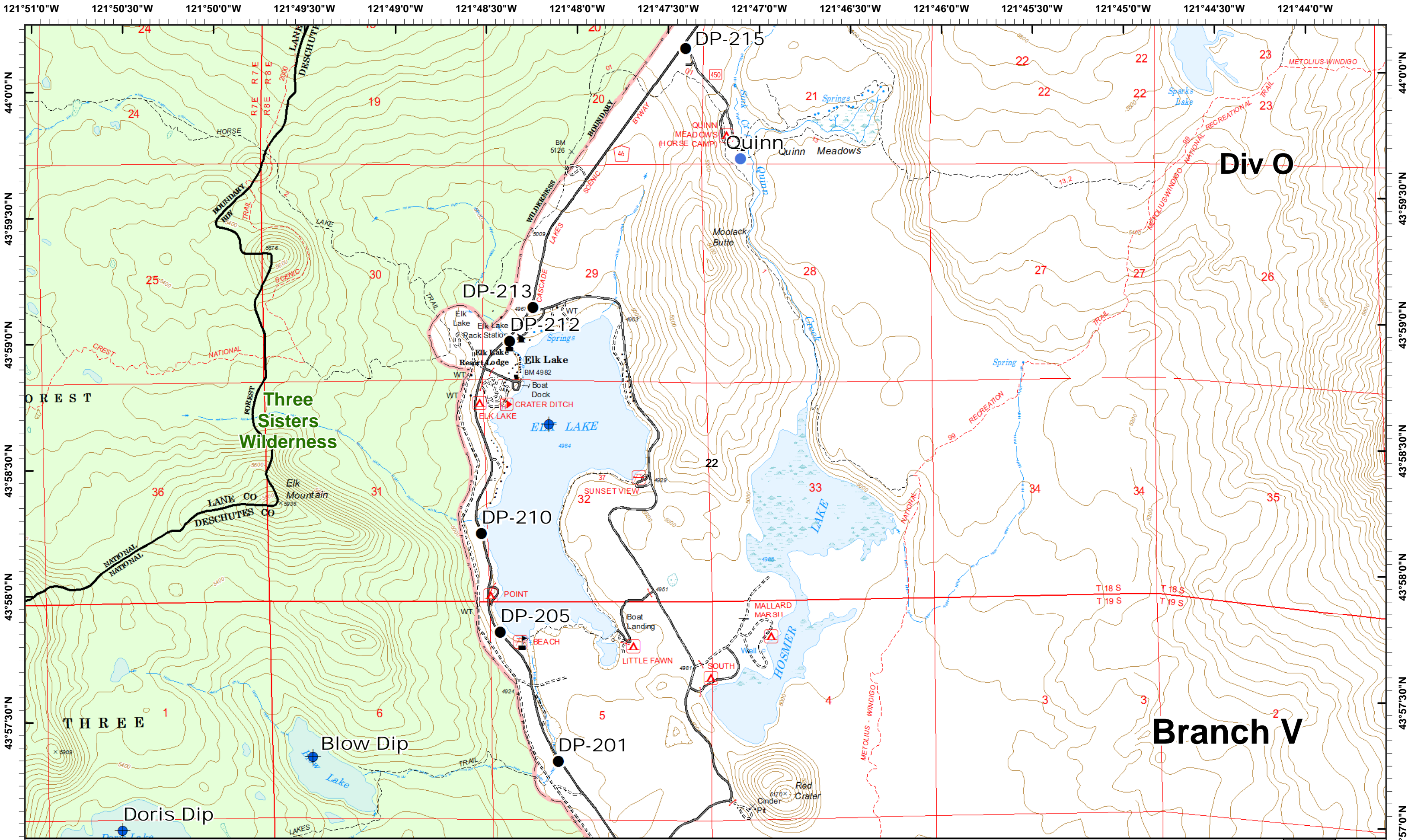
Div R

Rebel Horse Creek
September 24, 2017
Map Created 9/23/2017 9:02:43 PM



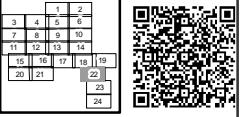
- Drop Point
- Helispot
- ▲ Value at Risk
- ▬ Uncontrolled Fire Edge
- ▬ Minimal Threat/Limited Action
- ▬ Completed Line
- H - Completed Hand Line
- ▬ Road as Completed Line
- ▬ Pre-Harvest Timber Sales

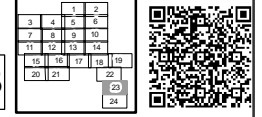
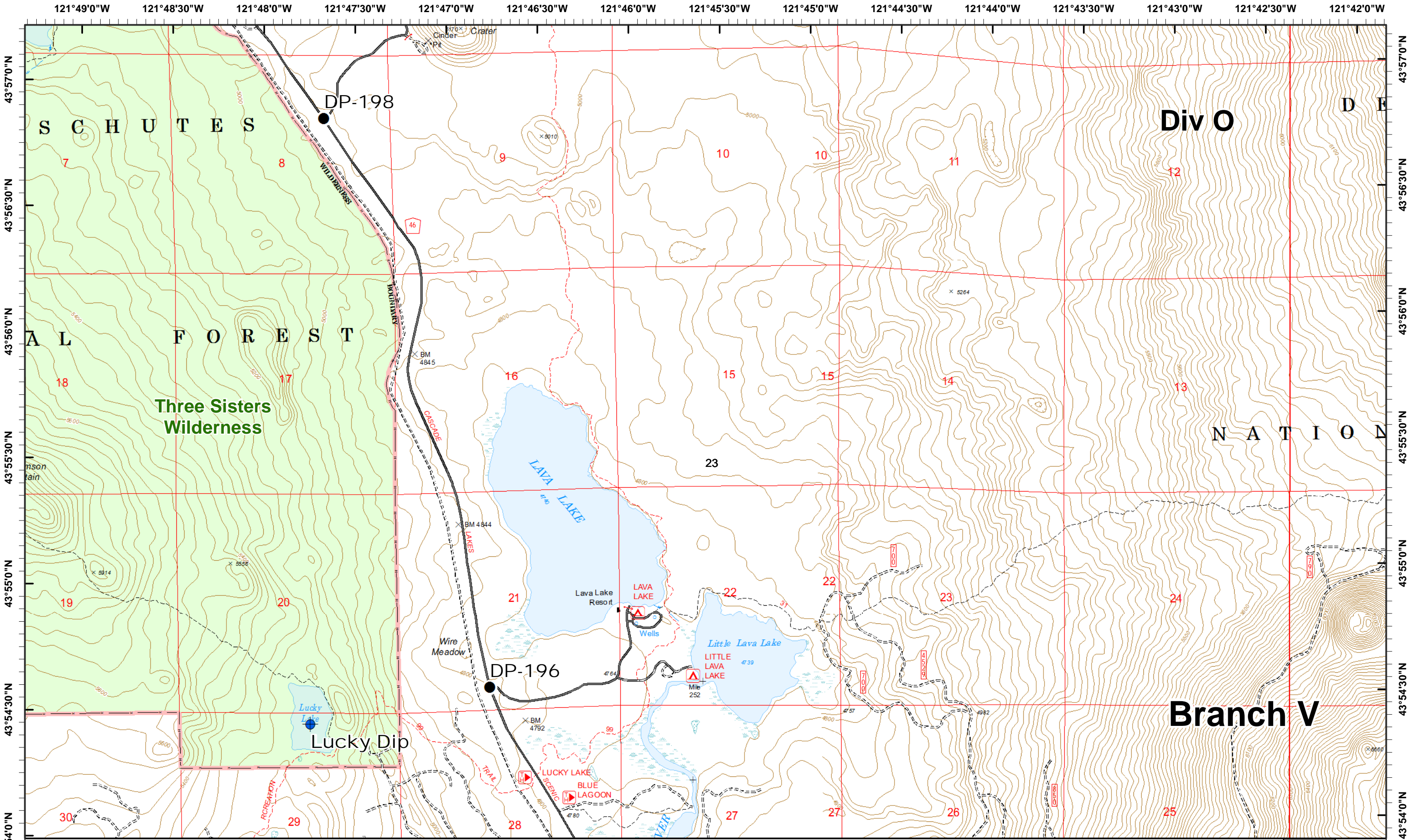


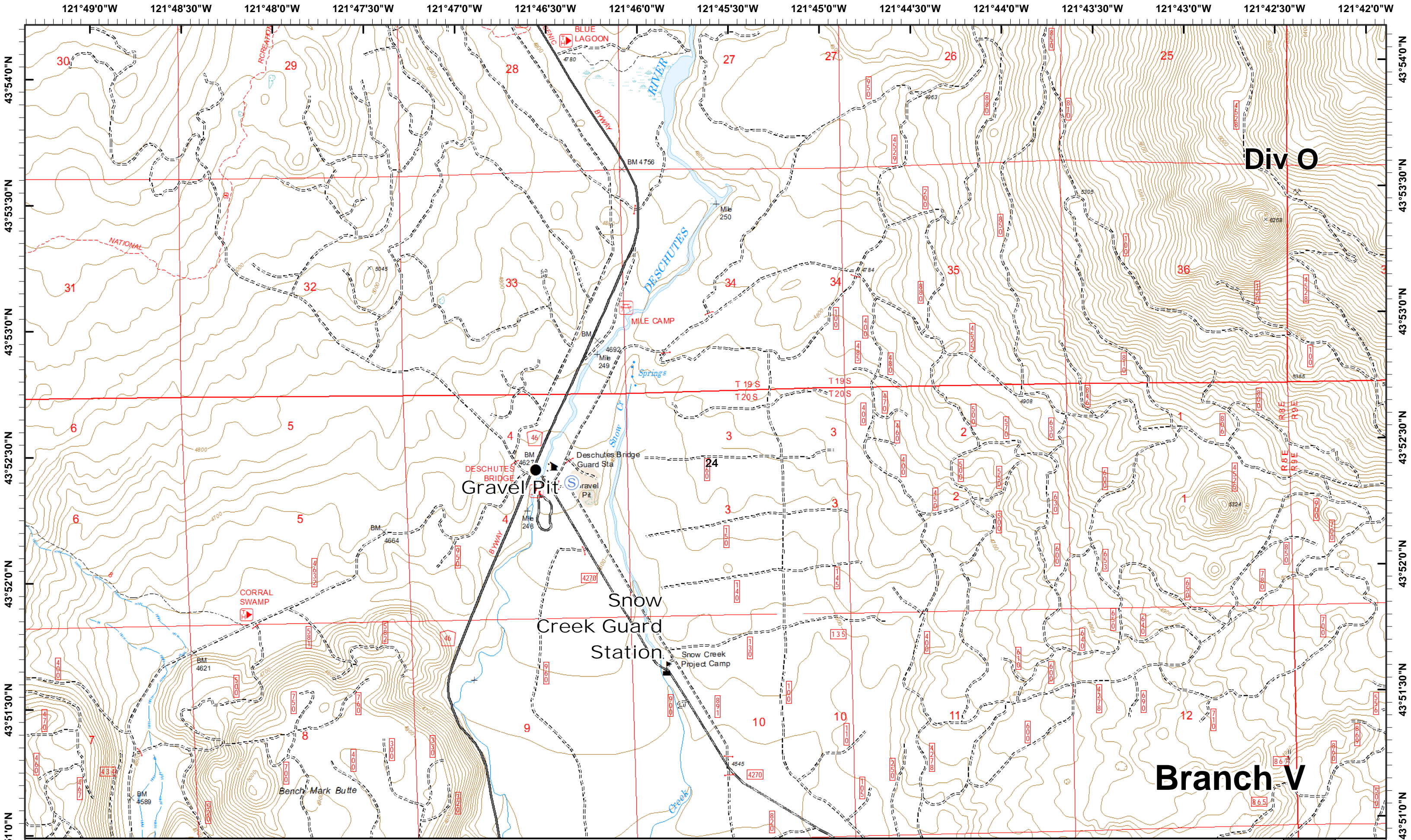


Div O

Branch V







Div O

Branch V

