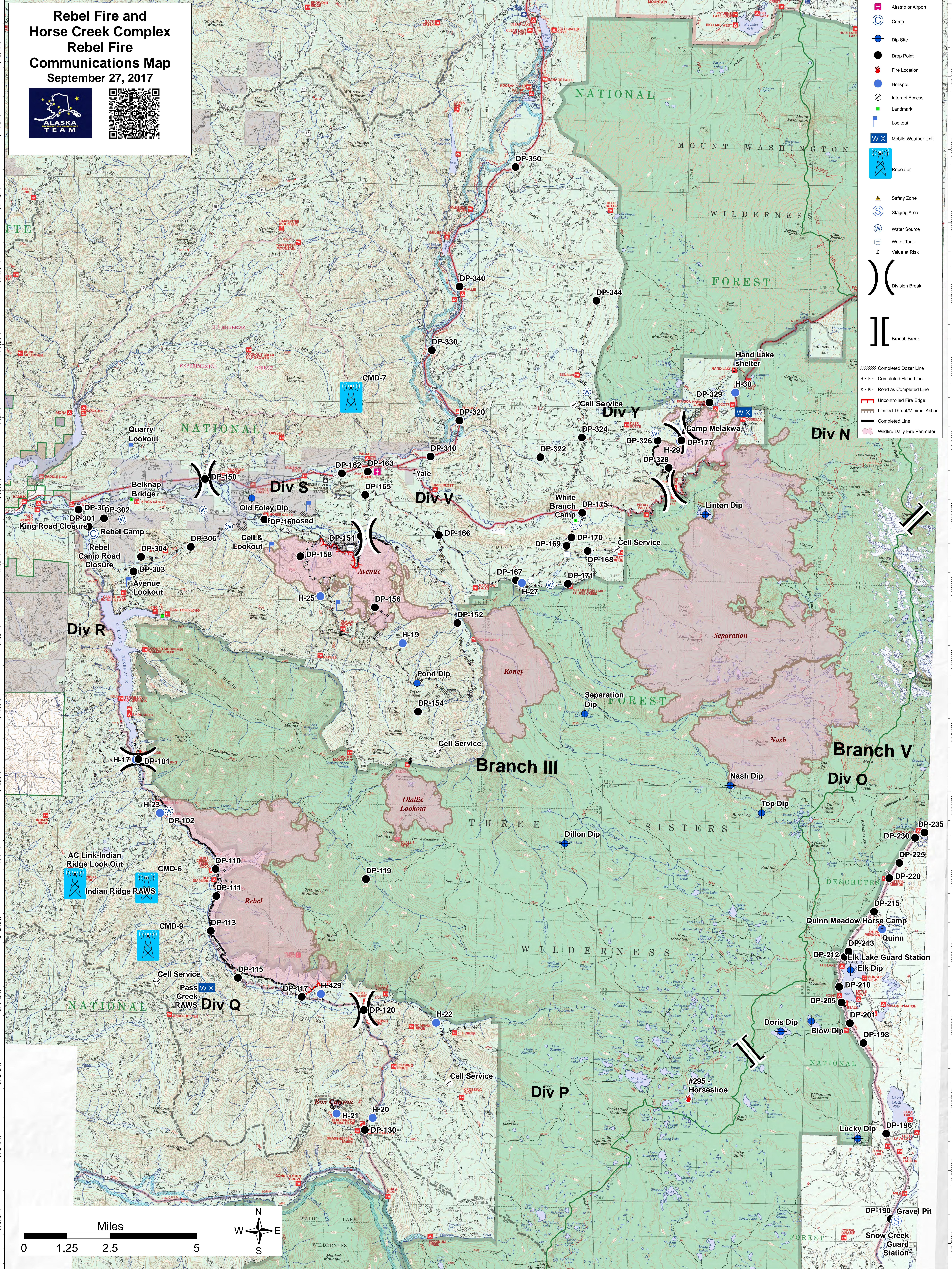


Rebel Fire and Horse Creek Complex Rebel Fire Communications Map

September 27, 2017



- Airstrip or Airport
- Camp
- Dip Site
- Drop Point
- Fire Location
- Helipad
- Internet Access
- Landmark
- Lookout
- Mobile Weather Unit
- Repeater
- Safety Zone
- Staging Area
- Water Source
- Water Tank
- Value at Risk
- Division Break
- Branch Break
- Completed Dozer Line
- Completed Hand Line
- Road as Completed Line
- Uncontrolled Fire Edge
- Limited Threat/Minimal Action
- Completed Line
- Wildfire Daily Fire Perimeter



44°21'00"N 122°16'50"W 122°15'00"W 122°13'10"W 122°11'20"W 122°9'30"W 122°7'40"W 122°5'50"W 122°4'00"W 122°2'10"W 122°0'20"W 121°58'30"W 121°56'40"W 121°54'50"W 121°53'00"W 121°51'10"W 121°49'20"W 121°47'30"W 121°45'40"W

44°19'20"N 44°17'30"N 44°15'40"N 44°13'50"N 44°12'00"N 44°10'10"N 44°8'20"N 44°6'30"N 44°4'40"N 44°2'50"N 44°1'00"N 43°59'10"N 43°57'20"N 43°55'30"N 43°53'40"N 43°51'50"N