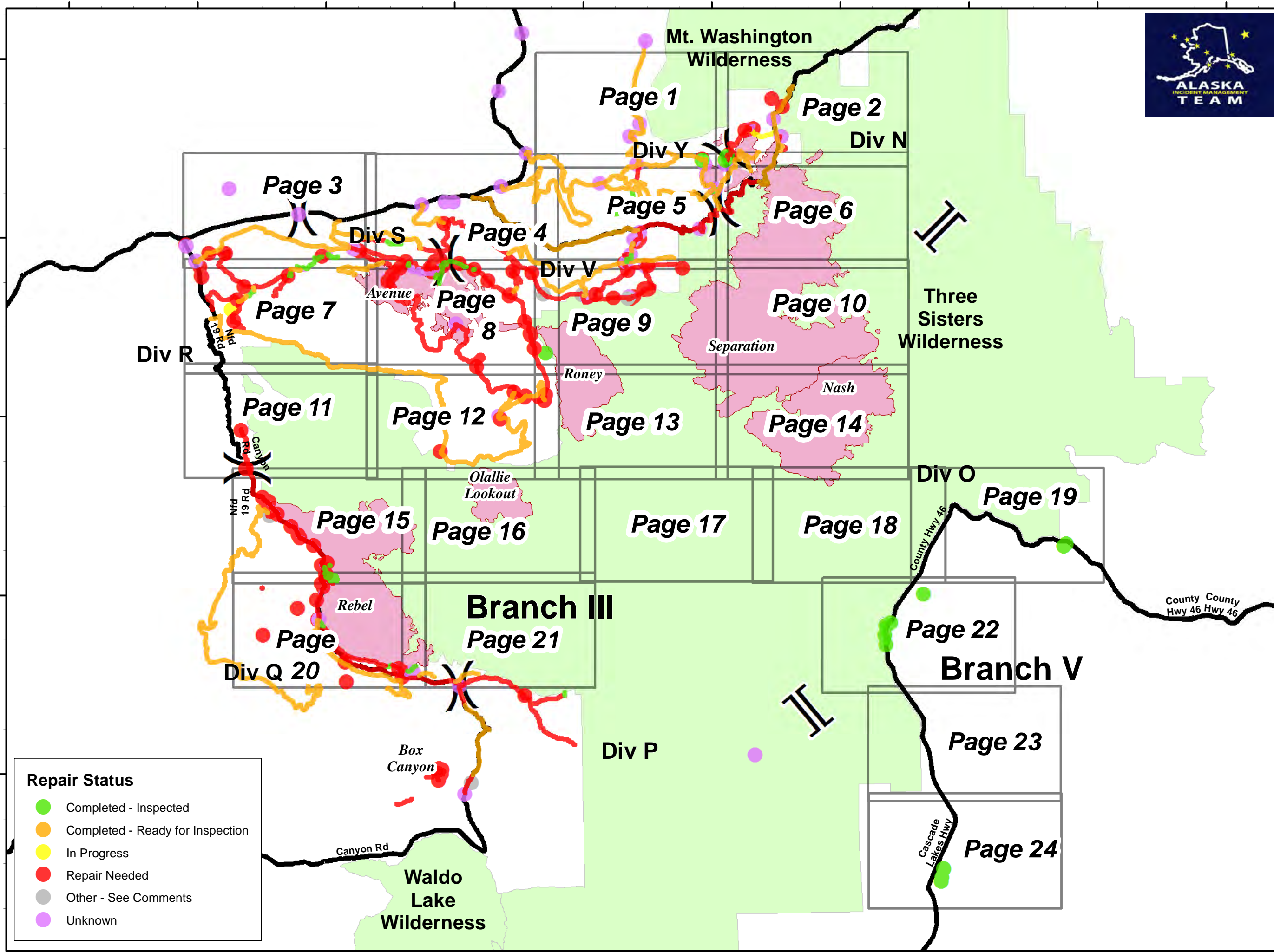


Horse Creek Complex and Rebel Fire IAP Index

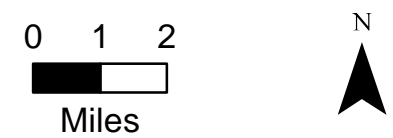
September 27, 2017



- Camp
- Closure
- Dip Site
- Drop Point
- Gate
- Helispot
- IR Isolated Heat Source
- Internet Access
- Lookout
- Mobile Weather Unit
- Pump
- Repeater
- Safety Zone
- Water Source
- Value at Risk
- Uncontrolled Fire Edge
- Completed Line
- Completed Dozer Line
- Completed Hand Line
- Road as Completed Line
- Proposed Dozer Line
- Planned Fire Line

Repair Status

- Completed - Inspected
- Completed - Ready for Inspection
- In Progress
- Repair Needed
- Other - See Comments
- Unknown



122°20'0"W 122°15'0"W 122°10'0"W 122°5'0"W 122°0'0"W 121°55'0"W 121°50'0"W 121°45'0"W 121°40'0"W 121°35'0"W

44°15'0"N 44°10'0"N 44°5'0"N 44°0'0"N 43°55'0"N