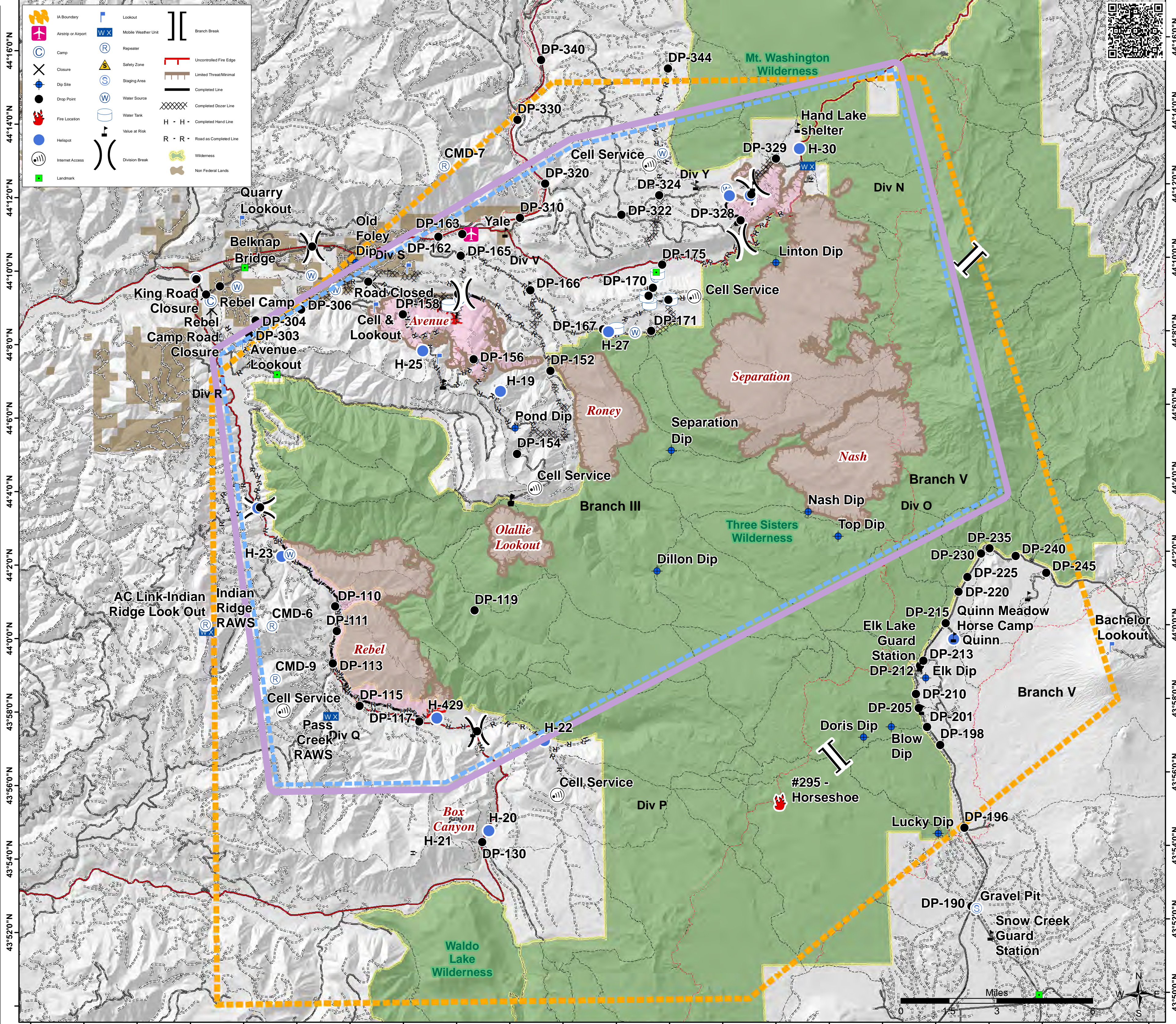


Pilot's Map
Rebel Fire and Horse Creek Complex
OR-WIF-170234
September 27, 2017



Name	Latitude	Longitude
Helibase	N44° 26.023'	W121° 56.427'
ICP (Hoodoo Ski Lodge)	N44° 24.529'	W121° 52.233'
McKenzie Bridge State Airport	N44° 10.890'	W122° 5.130'
H-17	N44° 3.495'	W122° 13.290'
H-19	N44° 6.600'	W122° 4.086'
H-20	N43° 54.649'	W122° 4.706'
H-21	N43° 54.736'	W122° 5.965'
H-22	N43° 57.083'	W122° 2.583'
H-23	N44° 2.172'	W122° 12.397'
H-25	N44° 7.729'	W122° 7.003'
H-27	N44° 8.190'	W121° 59.976'
H-28	N44° 11.850'	W121° 55.348'
H-29	N44° 11.850'	W121° 54.560'
H-30	N44° 13.105'	W121° 52.675'
H-429	N43° 57.731'	W122° 6.621'
Quinn Helispot	N43° 59.697'	W121° 47.117'
Unimproved Landing Area	N43° 58.932'	W121° 32.842'
Blow Dip	N43° 57.349'	W121° 49.513'
Dillon Dip	N44° 1.666'	W121° 58.258'
Doris Dip	N43° 57.068'	W121° 50.562'
Elk Dip	N43° 58.656'	W121° 48.191'
Linton Dip	N44° 10.019'	W121° 53.621'
Lucky Dip	N43° 54.425'	W121° 47.805'
Nash Dip	N44° 3.227'	W121° 52.530'
Old Foley Dip	N44° 10.149'	W122° 9.491'
Pond Dip	N44° 5.606'	W122° 3.550'
Separation Dip	N44° 4.939'	W121° 57.667'
Top Dip	N44° 2.554'	W121° 51.418'
DP-101	N44° 3.510'	W122° 13.201'
DP-102	N44° 2.201'	W122° 12.096'
DP-110	N44° 0.799'	W122° 10.405'
DP-111	N44° 0.122'	W122° 10.354'
DP-113	N43° 59.244'	W122° 10.515'
DP-115	N43° 58.082'	W122° 9.525'
DP-117	N43° 57.647'	W122° 7.285'
DP-119	N44° 0.648'	W122° 5.153'
DP-120	N43° 57.357'	W122° 5.112'
DP-130	N43° 54.343'	W122° 4.964'
DP-150	N44° 10.600'	W122° 11.142'
DP-151	N44° 9.270'	W122° 5.644'
DP-152	N44° 7.143'	W122° 2.190'
DP-154	N44° 4.893'	W122° 3.488'
DP-156	N44° 7.483'	W122° 5.089'
DP-158	N44° 8.719'	W122° 7.738'
DP-160	N44° 9.617'	W122° 9.033'
DP-163	N44° 10.892'	W122° 5.460'
DP-165	N44° 10.306'	W122° 5.527'
DP-166	N44° 9.343'	W122° 2.917'
DP-167	N44° 8.254'	W122° 0.184'
DP-168	N44° 9.037'	W121° 57.705'
DP-169	N44° 9.154'	W121° 58.447'
DP-170	N44° 9.368'	W121° 58.284'
DP-171	N44° 8.199'	W121° 58.369'
DP-175	N44° 9.994'	W121° 57.925'
DP-177	N44° 11.875'	W121° 54.518'
DP-190	N43° 52.423'	W121° 46.595'
DP-196	N43° 54.562'	W121° 46.817'
DP-198	N43° 56.828'	W121° 47.682'
DP-201	N43° 57.318'	W121° 48.167'
DP-205	N43° 57.833'	W121° 48.476'
DP-210	N43° 58.226'	W121° 48.570'
DP-212	N43° 58.987'	W121° 48.399'
DP-213	N43° 59.119'	W121° 48.271'
DP-215	N44° 0.137'	W121° 47.411'
DP-220	N44° 0.988'	W121° 46.907'
DP-225	N44° 1.377'	W121° 46.567'
DP-230	N44° 2.016'	W121° 46.038'
DP-235	N44° 2.152'	W121° 45.718'
DP-240	N44° 1.940'	W121° 44.735'
DP-245	N44° 1.467'	W121° 43.593'
DP-301	N44° 9.200'	W122° 15.097'
DP-302	N44° 9.528'	W122° 14.694'
DP-303	N44° 8.210'	W122° 13.530'
DP-304	N44° 8.597'	W122° 13.303'
DP-306	N44° 8.883'	W122° 11.576'
DP-310	N44° 11.312'	W122° 3.273'
DP-320	N44° 12.236'	W122° 2.305'
DP-322	N44° 11.363'	W121° 59.438'
DP-324	N44° 11.885'	W121° 58.003'
DP-326	N44° 11.850'	W121° 55.348'
DP-328	N44° 11.174'	W121° 54.940'
DP-329	N44° 12.840'	W121° 53.572'
DP-330	N44° 13.984'	W122° 3.331'
DP-340	N44° 15.601'	W122° 2.410'
DP-344	N44° 15.331'	W121° 57.609'
DP-350	N44° 18.641'	W122° 0.559'
Rebel Camp	N44° 9.147'	W122° 14.997'



44°16'0"N
44°14'0"N
44°12'0"N
44°10'0"N
44°8'0"N
44°6'0"N
44°4'0"N
44°2'0"N
44°0'0"N
43°58'0"N
43°56'0"N
43°54'0"N
43°52'0"N
43°50'0"N

122°22'0"W
122°20'0"W
122°18'0"W
122°16'0"W
122°14'0"W
122°12'0"W
122°10'0"W
122°8'0"W
122°6'0"W
122°4'0"W
122°2'0"W
122°0'0"W
121°58'0"W
121°56'0"W
121°54'0"W
121°52'0"W
121°50'0"W
121°48'0"W
121°46'0"W
121°44'0"W
121°42'0"W
121°40'0"W

