

I-301 Rhoades Canyon Fire
Total Acres - 15,175
BLM Acres - 6,148
Private Acres - 8,951
NPS Acres - 3
OR State Park Acres - 73
6-24-2017, 1600 Hours
Estimated start 6-20-17, 1200



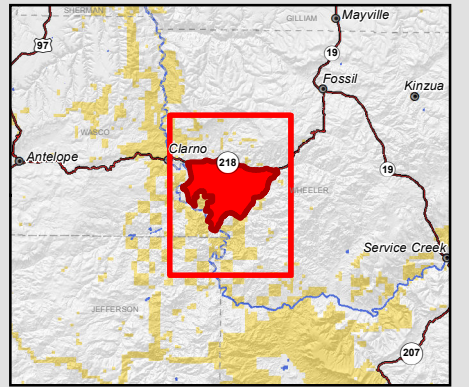
0 0.5 1 2 Miles

U.S. DEPARTMENT OF THE INTERIOR
 Bureau of Land Management
 PRINEVILLE DISTRICT



No warranty is made by the Bureau of Land Management as to the accuracy, reliability, or completeness of these data for individual or aggregate use with other data. Original data were compiled from various sources and may be updated without notification.

MXD: P:\pr\gis_projects\fire_fuels\Incident_Maps\2017\I_301_Rhoades_Canyon\MXD\I_301_20170624_1600.mxd
 Last Modified Date: 6/26/2017 1:45 PM



- | | | |
|-----------------|-------------------|---------------------------|
| I-301 Perimeter | Cities | Administered Lands |
| Power Lines | Highways | Bureau of Land Management |
| BLM Wilderness | Major road | National Park Service |
| WSR Corridor | Intermediate road | State |
| | Minor Roads | Private/Unknown |

