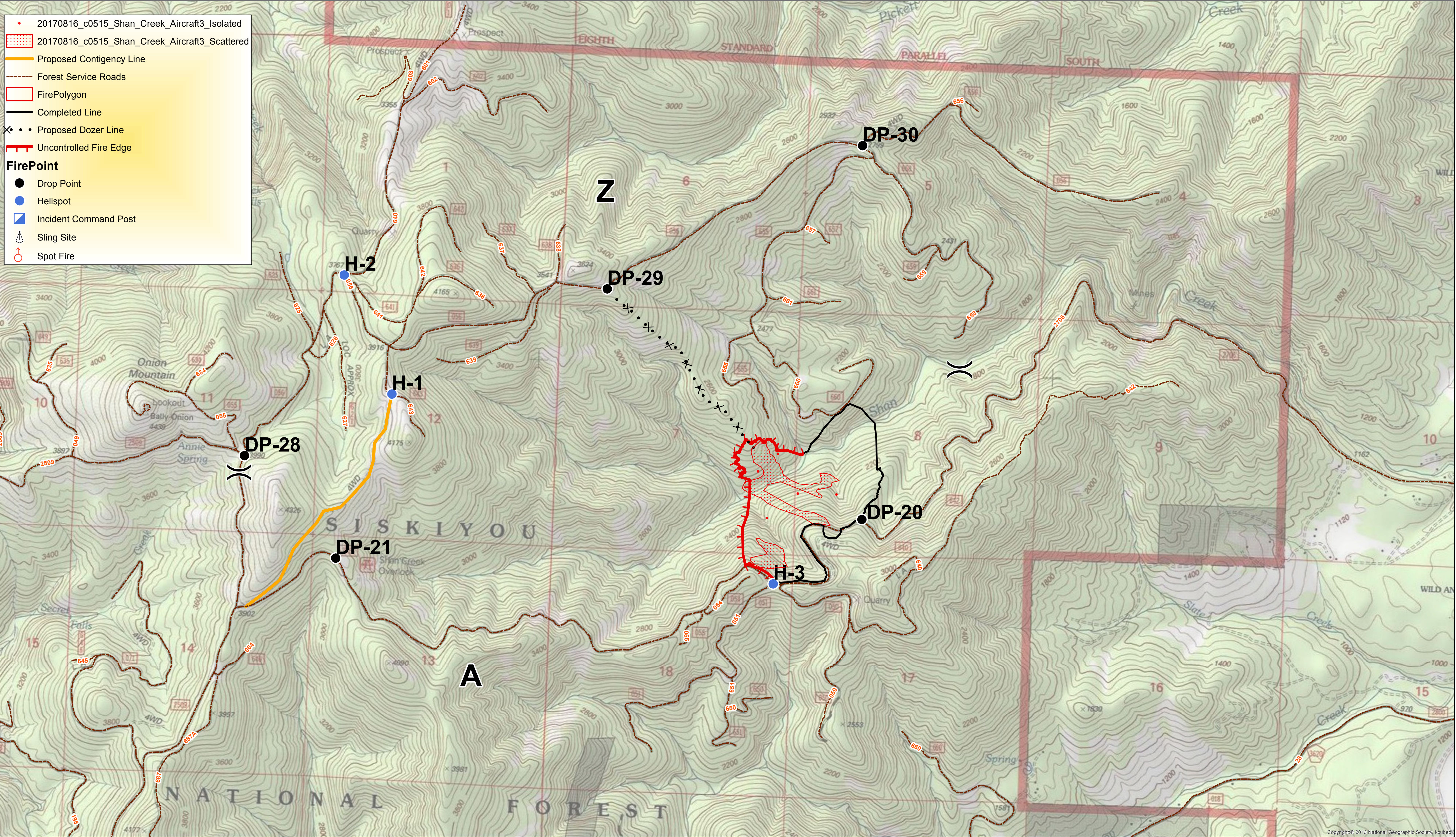


Operational Period: 8/16/17, 0700 - 1900

ABC Misc; Shan Creek Fire Operations Map

Approx acres: 400, 8/15/17 1730



- 20170816_c0515_Shan_Creek_Aircraft3_Isolated
- 20170816_c0515_Shan_Creek_Aircraft3_Scattered
- Proposed Contingency Line
- Forest Service Roads
- ▭ FirePolygon
- Completed Line
- ×•• Proposed Dozer Line
- ▬ Uncontrolled Fire Edge
- FirePoint**
- Drop Point
- Helispot
- ▭ Incident Command Post
- ⚙ Sling Site
- ⊕ Spot Fire

1 inch = 1,000 feet

