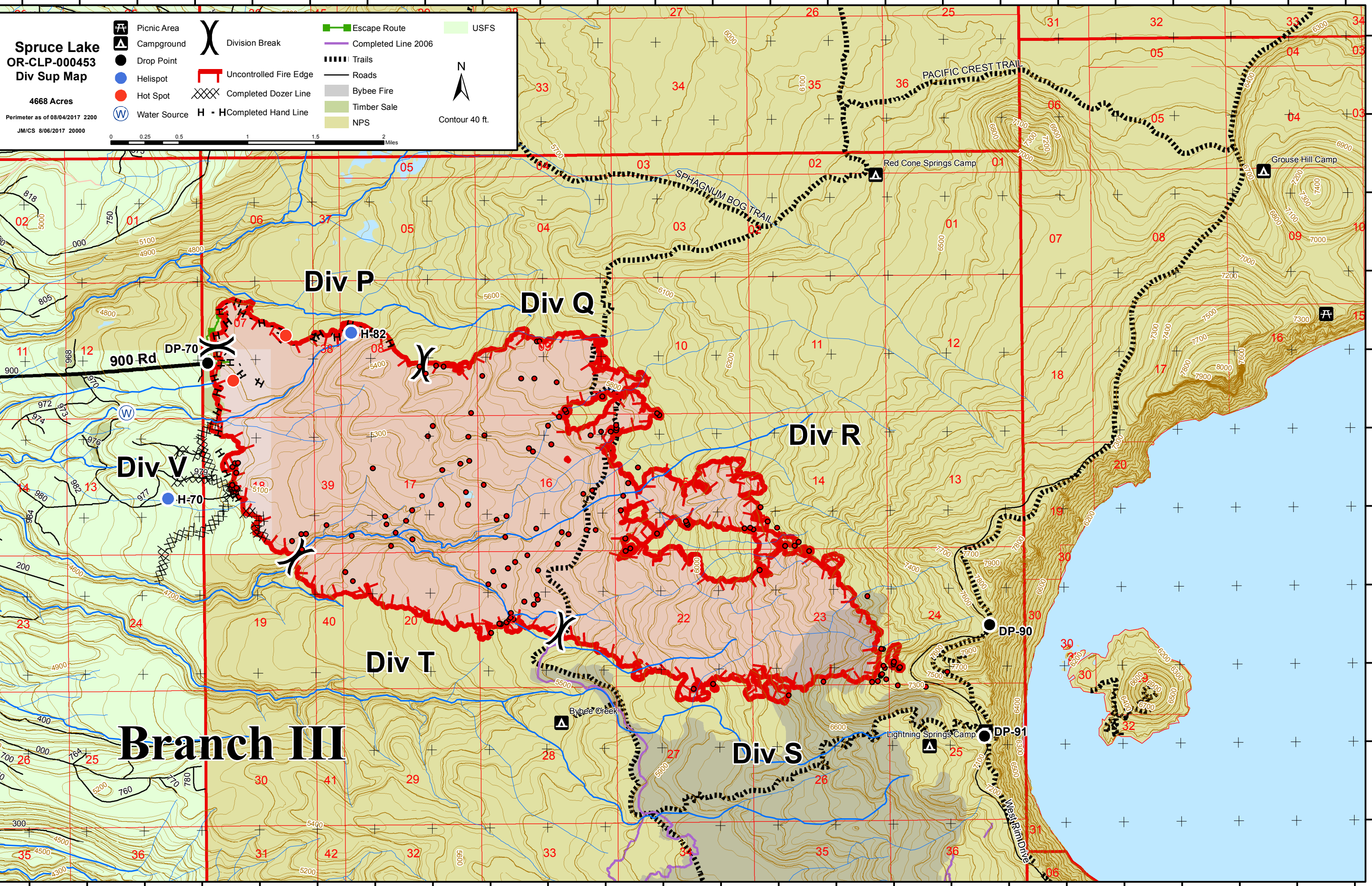


122°18'30"W 122°18'0"W 122°17'30"W 122°17'0"W 122°16'30"W 122°16'0"W 122°15'30"W 122°15'0"W 122°14'30"W 122°14'0"W 122°13'30"W 122°13'0"W 122°12'30"W 122°12'0"W 122°11'30"W 122°11'0"W 122°10'30"W 122°10'0"W 122°9'30"W 122°9'0"W 122°8'30"W 122°8'0"W 122°7'30"W 122°7'0"W



Spruce Lake OR-CLP-000453 Div Sup Map

4668 Acres
Perimeter as of 08/04/2017 2200
JM/CS 8/06/2017 20000

	Picnic Area		Division Break		Escape Route		USFS
	Campground		Uncontrolled Fire Edge		Completed Line 2006		Trails
	Drop Point		Completed Dozer Line		Roads		Bybee Fire
	Helispot		Completed Hand Line		Timber Sale		NPS
	Hot Spot						
	Water Source						

0 0.25 0.5 1 1.5 2 Miles

N
Contour 40 ft.

Branch III

122°18'30"W 122°18'0"W 122°17'30"W 122°17'0"W 122°16'30"W 122°16'0"W 122°15'30"W 122°15'0"W 122°14'30"W 122°14'0"W 122°13'30"W 122°13'0"W 122°12'30"W 122°12'0"W 122°11'30"W 122°11'0"W 122°10'30"W 122°10'0"W 122°9'30"W 122°9'0"W 122°8'30"W 122°8'0"W 122°7'30"W 122°7'0"W

43°0'30"N
43°0'0"N
42°59'30"N
42°59'0"N
42°58'30"N
42°58'0"N
42°57'30"N
42°57'0"N
42°56'30"N
42°56'0"N
42°55'30"N

43°0'30"N
43°0'0"N
42°59'30"N
42°59'0"N
42°58'30"N
42°58'0"N
42°57'30"N
42°57'0"N
42°56'30"N
42°56'0"N
42°55'30"N