

122°17'W

122°16'W

Spruce Lake Fire

Heat Acres: 194

OR-CLP-000453

Infrared Interpretation

Imagery Date:

2017/07/31 2105 Hrs



1:10,000

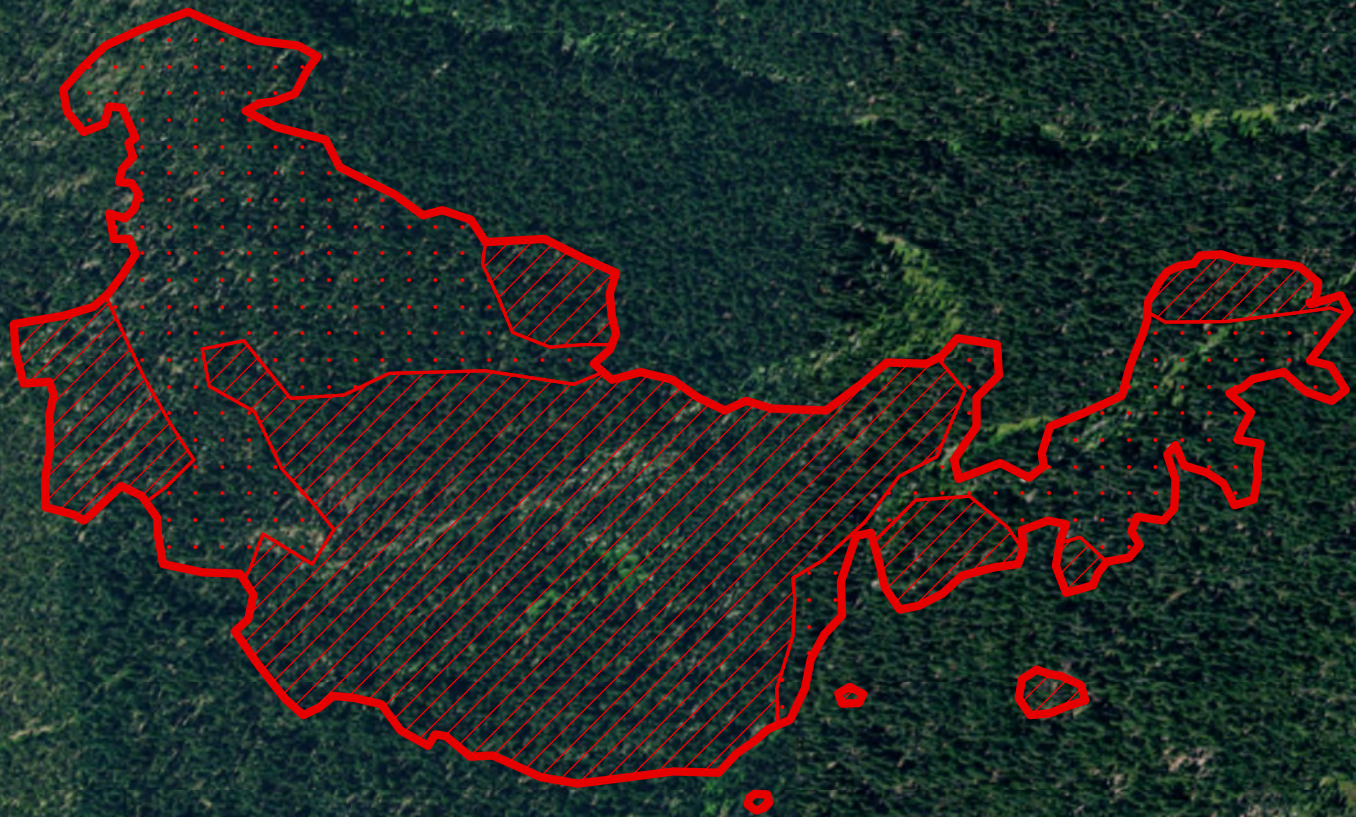






42°59'N

42°59'N

42°58'N

42°58'N



-  Heat Perimeter
-  Intense Heat Areas
-  Scattered Heat Areas
-  Isolated Heat Sources

NAD 1983 UTM Zone 10N

IRIN: K Felker
Map produced:
7/31/2017 2235 hrs

0 500 1,000 2,000



Getmapping, Aerogrid, IGN, IGP, swisstopo, and the GIS User Community

122°17'W

122°16'W