

Staley Fire Operations Map

OR-WIF-170174

K9NE

8/19/2017, Day

GIS Acres: 761

Lat/Long Grid

NAD 1983

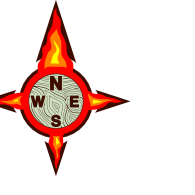
Degrees Minutes Seconds

ND 8/18/2017 7:37:03 PM

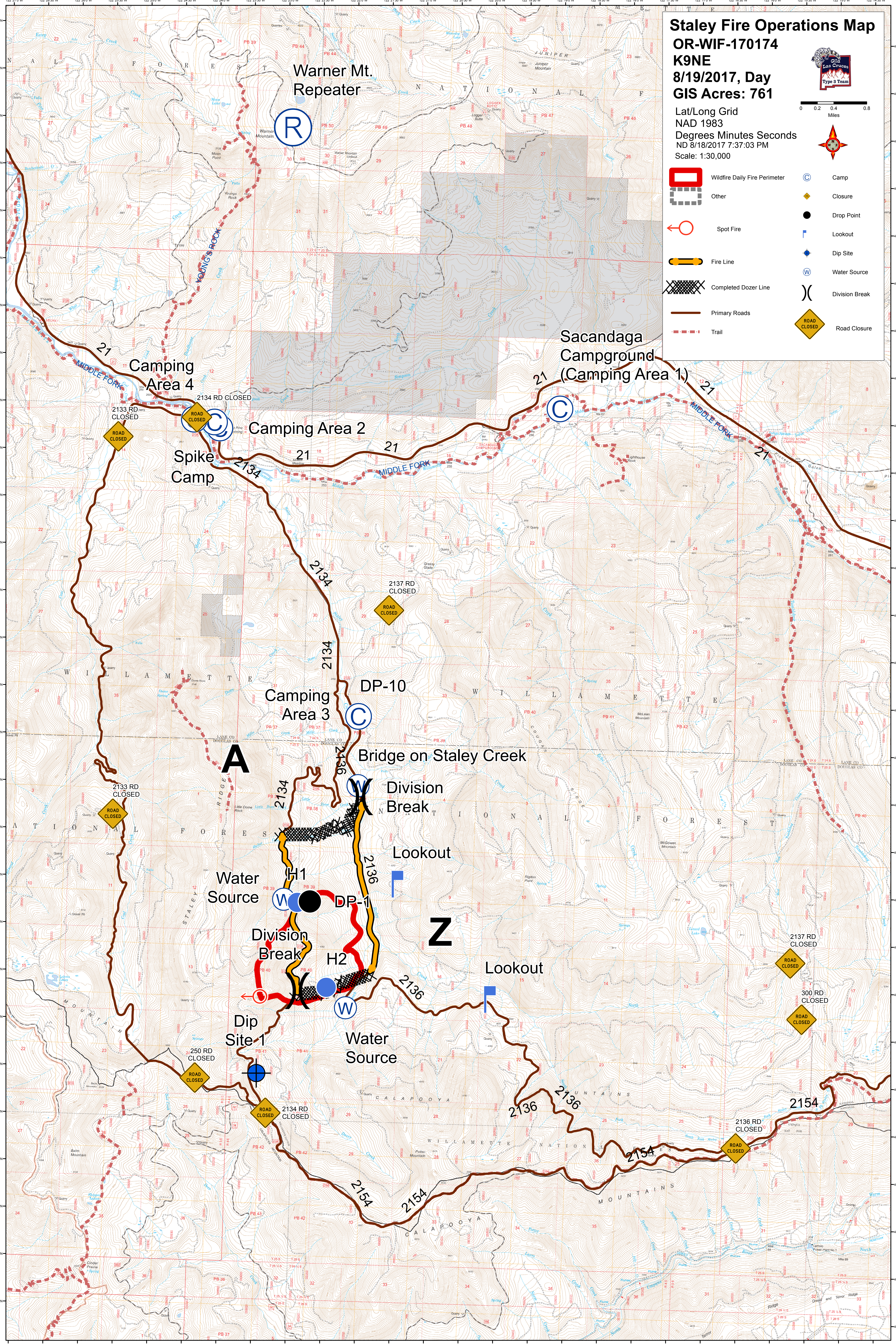
Scale: 1:30,000



0 0.2 0.4 0.8 Miles



- Wildfire Daily Fire Perimeter
- Other
- Spot Fire
- Fire Line
- Completed Dozer Line
- Primary Roads
- Trail
- Camp
- Closure
- Drop Point
- Lookout
- Dip Site
- Water Source
- Division Break
- Road Closure



Warner Mt. Repeater

Sacandaga Campground (Camping Area 1)

Camping Area 4

Camping Area 2

Spike Camp

Camping Area 3

DP-10

Bridge on Staley Creek

Division Break

Lookout

Water Source

DP-1

Division Break

H2

Lookout

Dip Site 1

Water Source

250 RD CLOSED

2134 RD CLOSED

2137 RD CLOSED

300 RD CLOSED

2136 RD CLOSED

