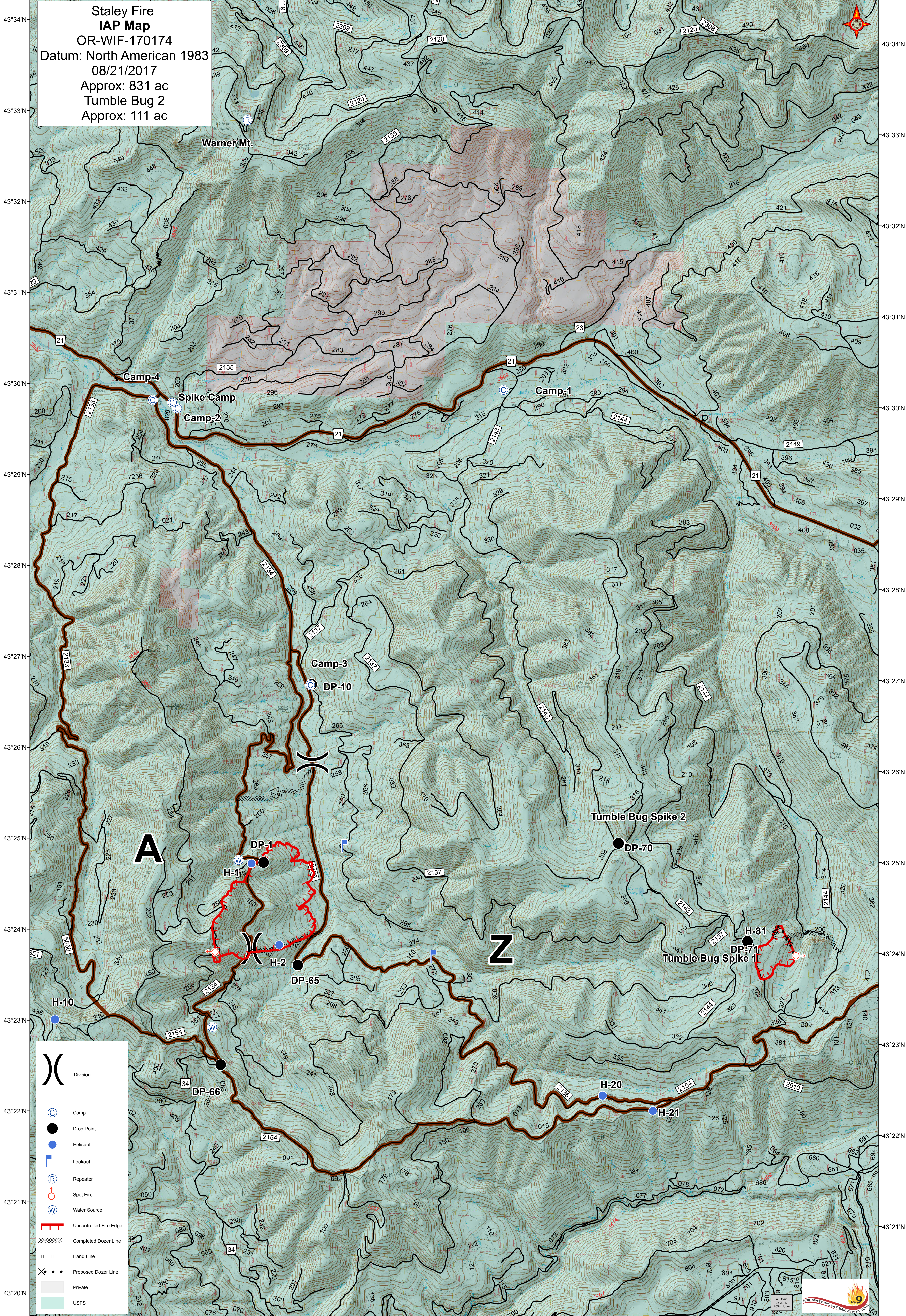
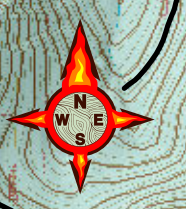


122°26'W 122°25'W 122°24'W 122°23'W 122°22'W 122°21'W 122°20'W 122°19'W 122°18'W 122°17'W 122°16'W 122°15'W 122°14'W

**Staley Fire
IAP Map**
OR-WIF-170174
Datum: North American 1983
08/21/2017
Approx: 831 ac
Tumble Bug 2
Approx: 111 ac



A

Z

- Division
- Camp
- Drop Point
- Helispot
- Lookout
- Repeater
- Spot Fire
- Water Source
- Uncontrolled Fire Edge
- Completed Dozer Line
- Hand Line
- Proposed Dozer Line
- Private
- USFS



122°25'W 122°24'W 122°23'W 122°22'W 122°21'W 122°20'W 122°19'W 122°18'W 122°17'W 122°16'W 122°15'W 122°14'W