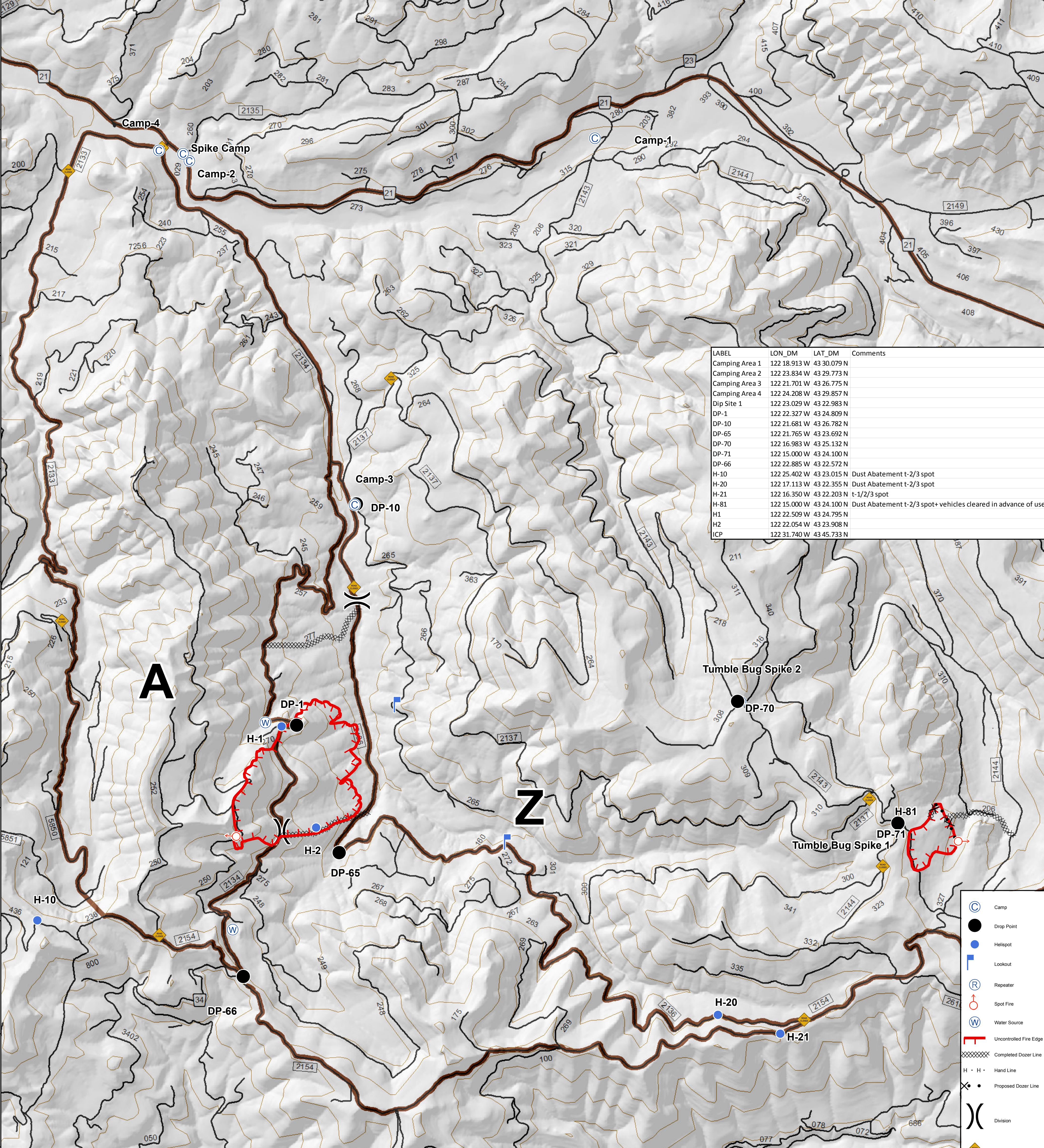
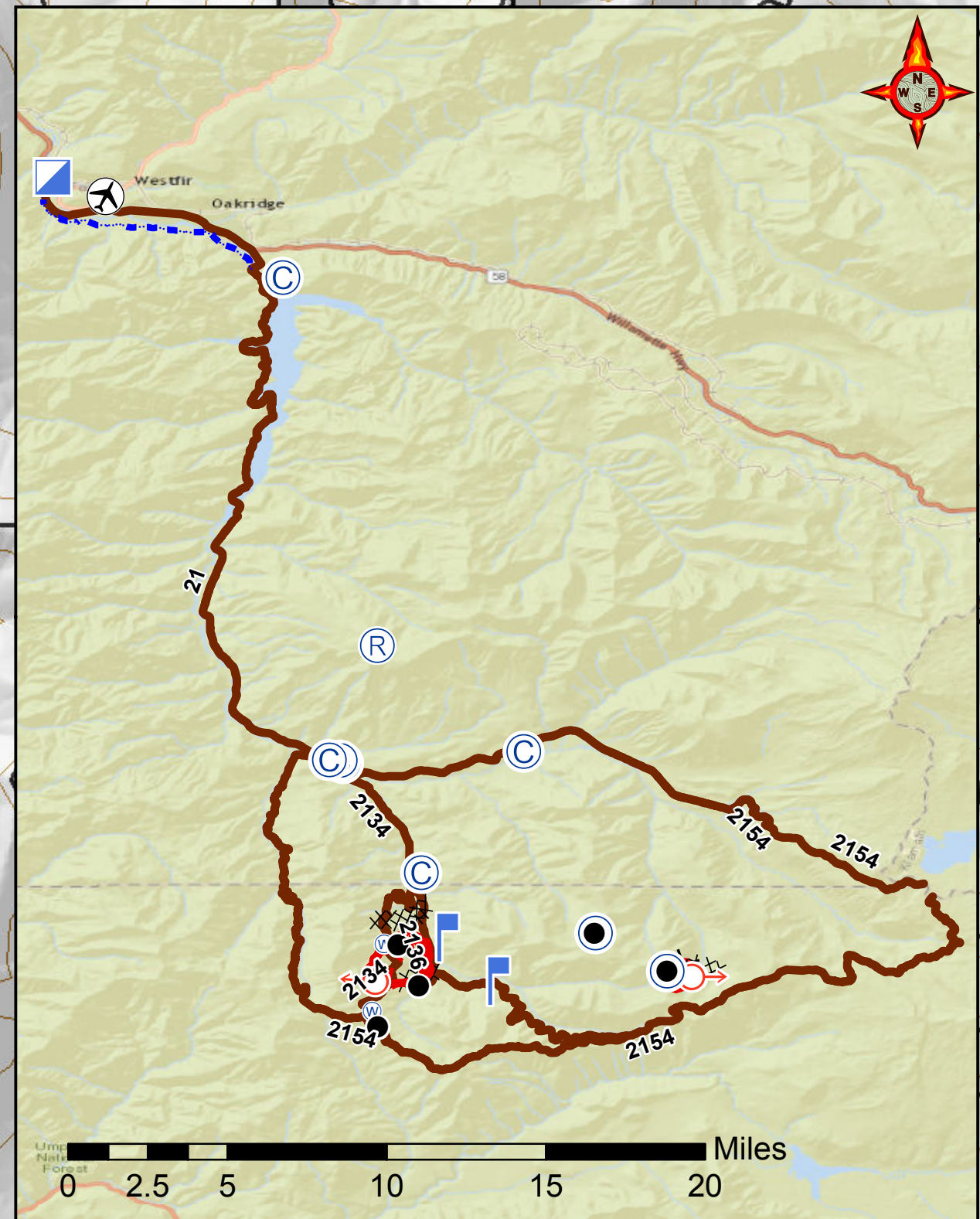
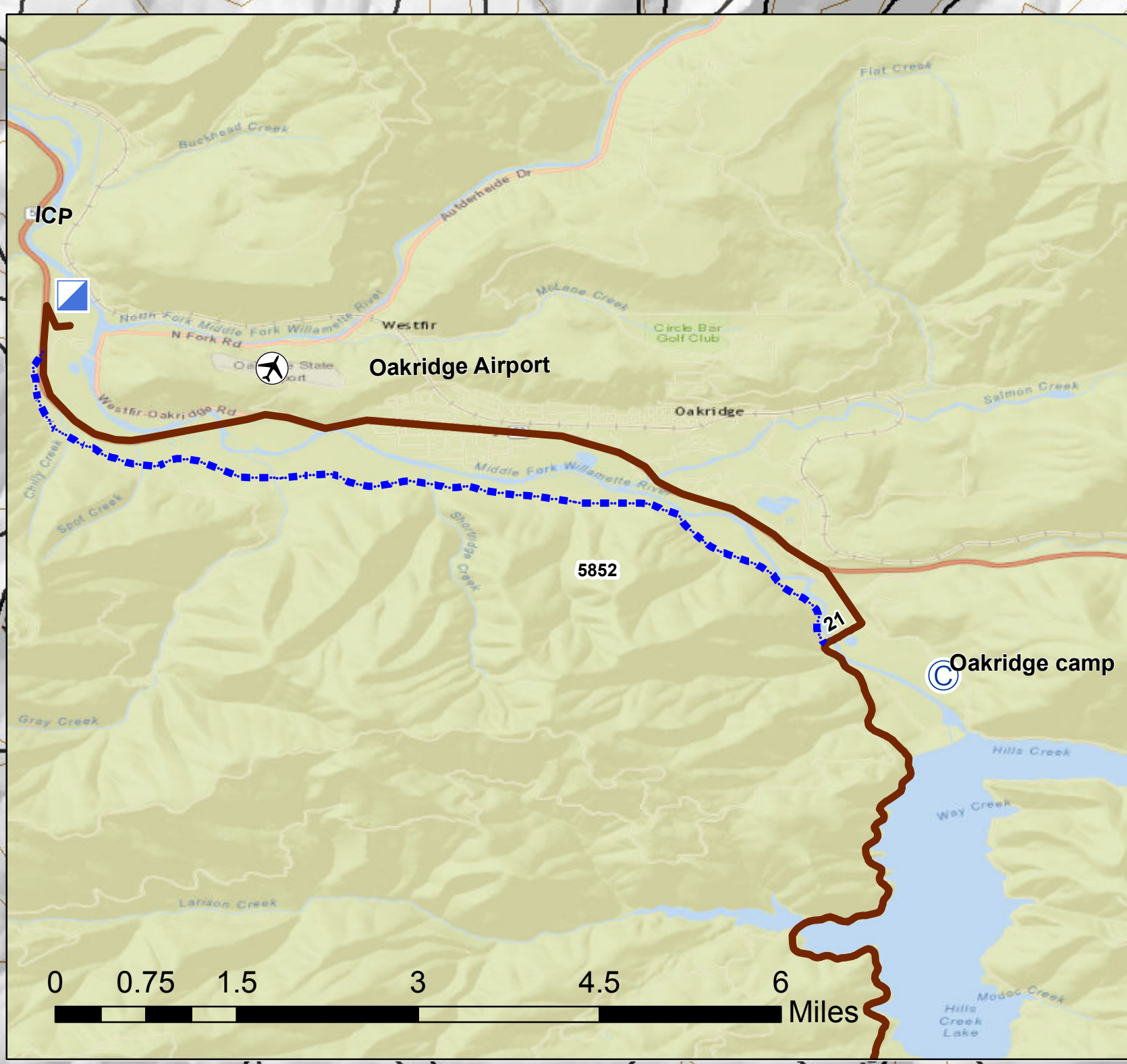
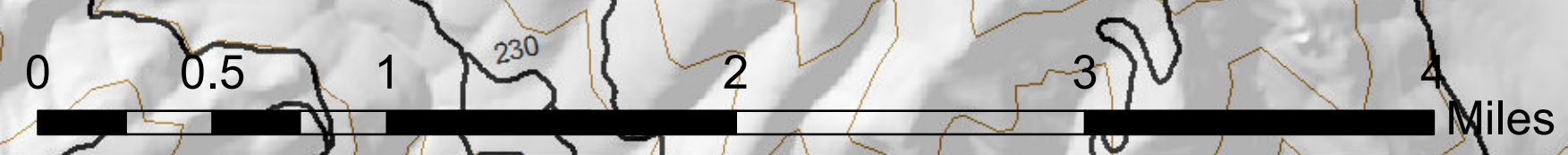


122°26'W 122°25'W 122°24'W 122°23'W 122°22'W 122°21'W 122°20'W 122°19'W 122°18'W 122°17'W 122°16'W 122°15'W 122°14'W

**Staley Fire  
Commo Map**  
OR-WIF-170174  
Datum: North American 1983  
08/21/2017  
Approx: 795 ac  
Tumble Bug 2  
Approx: 111 ac



LABEL	LON_DM	LAT_DM	Comments
Camping Area 1	122 18.913 W	43 30.079 N	
Camping Area 2	122 23.834 W	43 29.773 N	
Camping Area 3	122 21.701 W	43 26.775 N	
Camping Area 4	122 24.208 W	43 29.857 N	
Dip Site 1	122 23.029 W	43 22.983 N	
DP-1	122 22.327 W	43 24.809 N	
DP-10	122 21.681 W	43 26.782 N	
DP-65	122 21.765 W	43 23.692 N	
DP-70	122 16.983 W	43 25.132 N	
DP-71	122 15.000 W	43 24.100 N	
DP-66	122 22.885 W	43 22.572 N	
H-10	122 25.402 W	43 23.015 N	Dust Abatement t-2/3 spot
H-20	122 17.113 W	43 22.355 N	Dust Abatement t-2/3 spot
H-21	122 16.350 W	43 22.203 N	t-1/2/3 spot
H-81	122 15.000 W	43 24.100 N	Dust Abatement t-2/3 spot+ vehicles cleared in advance of use
H1	122 22.509 W	43 24.795 N	
H2	122 22.054 W	43 23.908 N	
ICP	122 31.740 W	43 45.733 N	



A. Date: 08/20/17 2:07 Hours

- Camp
- Drop Point
- Helispot
- Lookout
- Repeater
- Spot Fire
- Water Source
- Uncontrolled Fire Edge
- Completed Dozer Line
- Hand Line
- Proposed Dozer Line
- Division
- Road closure
- Primary Roads
- Alternate route\_5852

122°25'W 122°24'W 122°23'W 122°22'W 122°21'W 122°20'W 122°19'W 122°18'W 122°17'W 122°16'W 122°15'W 122°14'W