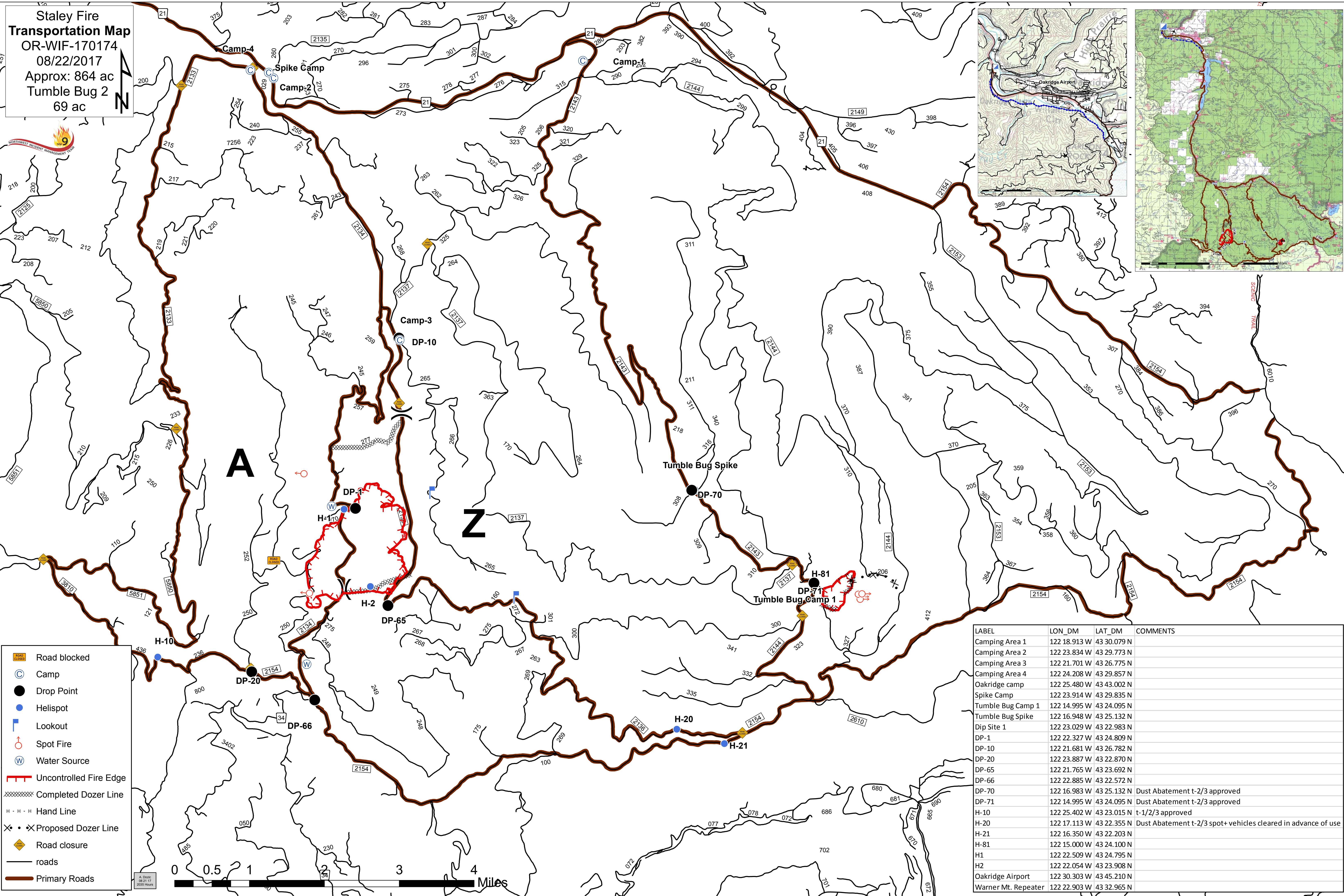
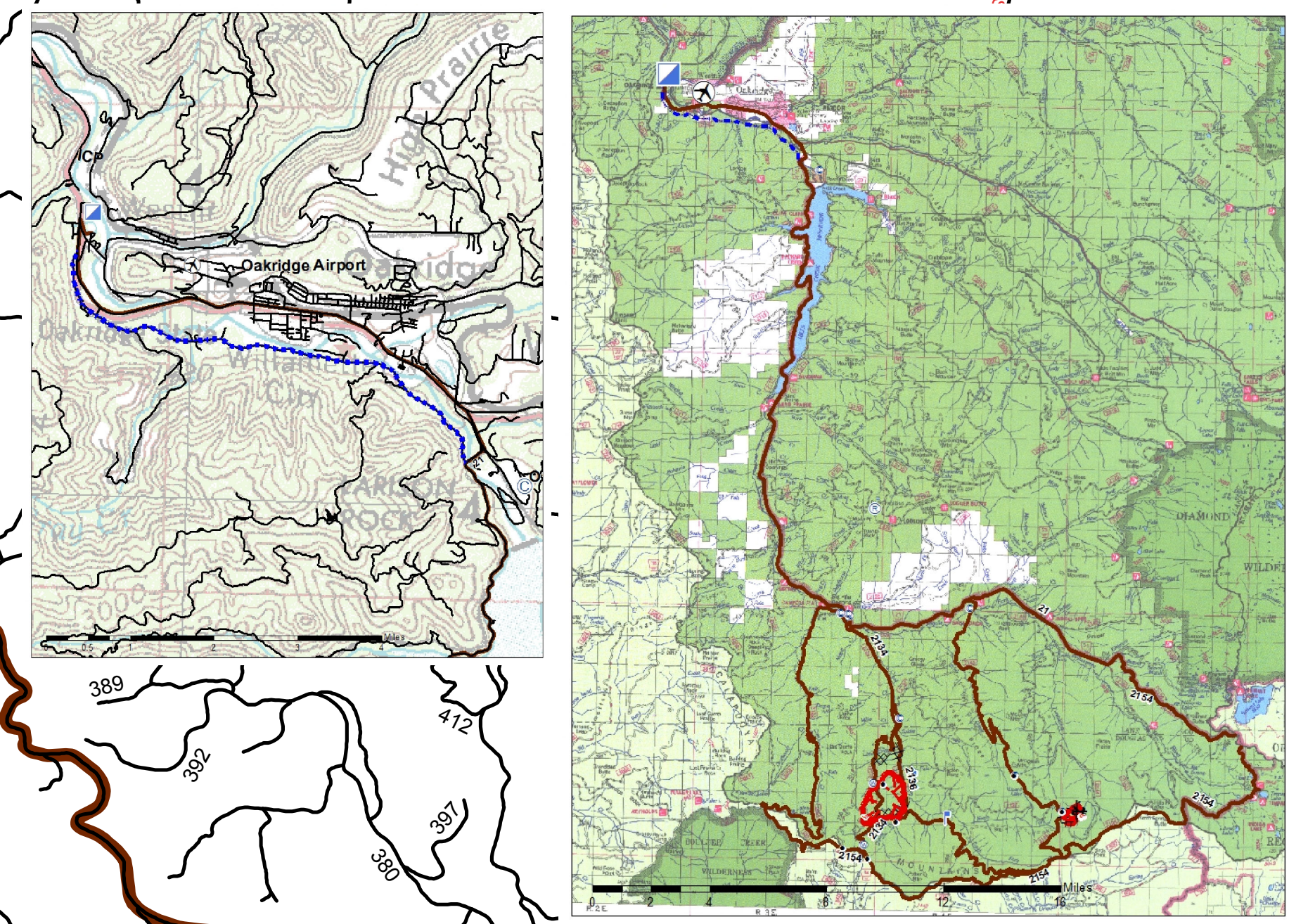


**Staley Fire
Transportation Map**
OR-WIF-170174
08/22/2017
Approx: 864 ac
Tumble Bug 2
69 ac



- Road blocked
- Camp
- Drop Point
- Helispot
- Lookout
- Spot Fire
- Water Source
- Uncontrolled Fire Edge
- Completed Dozer Line
- Hand Line
- Proposed Dozer Line
- Road closure
- roads
- Primary Roads



| LABEL | LON_DM | LAT_DM | COMMENTS |
|---------------------|--------------|-------------|---|
| Camping Area 1 | 122 18.913 W | 43 30.079 N | |
| Camping Area 2 | 122 23.834 W | 43 29.773 N | |
| Camping Area 3 | 122 21.701 W | 43 26.775 N | |
| Camping Area 4 | 122 24.208 W | 43 29.857 N | |
| Oakridge camp | 122 25.480 W | 43 43.002 N | |
| Spike Camp | 122 23.914 W | 43 29.835 N | |
| Tumble Bug Camp 1 | 122 14.995 W | 43 24.095 N | |
| Tumble Bug Spike | 122 16.948 W | 43 25.132 N | |
| Dip Site 1 | 122 23.029 W | 43 22.983 N | |
| DP-1 | 122 22.327 W | 43 24.809 N | |
| DP-10 | 122 21.681 W | 43 26.782 N | |
| DP-20 | 122 23.887 W | 43 22.870 N | |
| DP-65 | 122 21.765 W | 43 23.692 N | |
| DP-66 | 122 22.885 W | 43 22.572 N | |
| DP-70 | 122 16.983 W | 43 25.132 N | Dust Abatement t-2/3 approved |
| DP-71 | 122 14.995 W | 43 24.095 N | Dust Abatement t-2/3 approved |
| H-10 | 122 25.402 W | 43 23.015 N | t-1/2/3 approved |
| H-20 | 122 17.113 W | 43 22.355 N | Dust Abatement t-2/3 spot+ vehicles cleared in advance of use |
| H-21 | 122 16.350 W | 43 22.203 N | |
| H-81 | 122 15.000 W | 43 24.100 N | |
| H1 | 122 22.509 W | 43 24.795 N | |
| H2 | 122 22.054 W | 43 23.908 N | |
| Oakridge Airport | 122 30.303 W | 43 45.210 N | |
| Warner Mt. Repeater | 122 22.903 W | 43 32.965 N | |