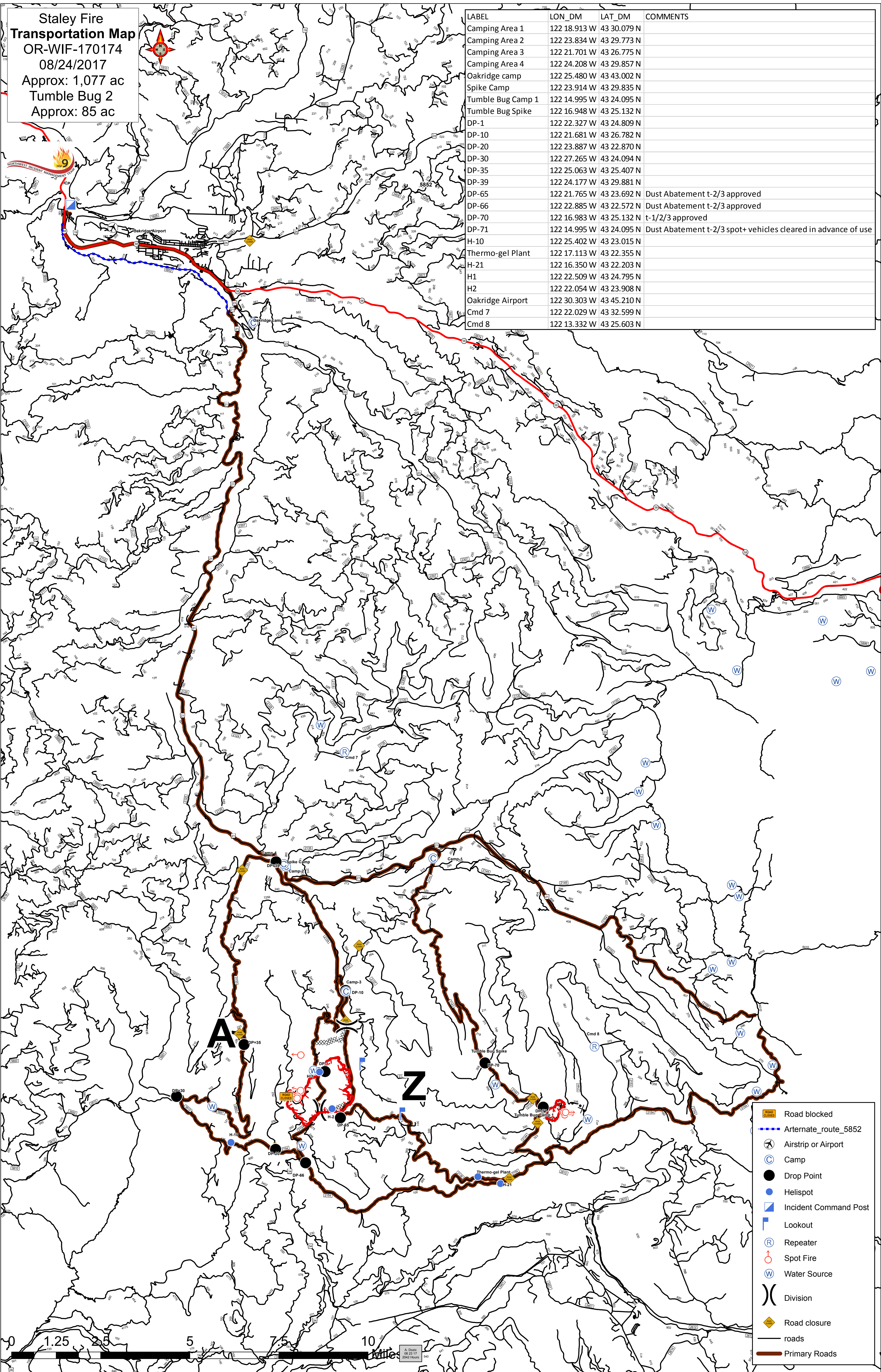


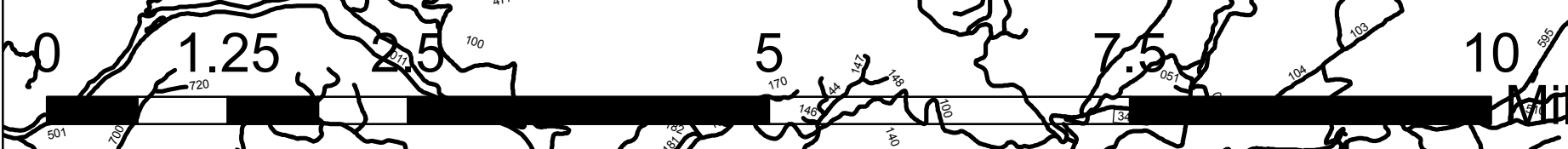
**Staley Fire**  
**Transportation Map**  
 OR-WIF-170174  
 08/24/2017  
 Approx: 1,077 ac  
 Tumble Bug 2  
 Approx: 85 ac



LABEL	LON_DM	LAT_DM	COMMENTS
Camping Area 1	122 18.913 W	43 30.079 N	
Camping Area 2	122 23.834 W	43 29.773 N	
Camping Area 3	122 21.701 W	43 26.775 N	
Camping Area 4	122 24.208 W	43 29.857 N	
Oakridge camp	122 25.480 W	43 43.002 N	
Spike Camp	122 23.914 W	43 29.835 N	
Tumble Bug Camp 1	122 14.995 W	43 24.095 N	
Tumble Bug Spike	122 16.948 W	43 25.132 N	
DP-1	122 22.327 W	43 24.809 N	
DP-10	122 21.681 W	43 26.782 N	
DP-20	122 23.887 W	43 22.870 N	
DP-30	122 27.265 W	43 24.094 N	
DP-35	122 25.063 W	43 25.407 N	
DP-39	122 24.177 W	43 29.881 N	
DP-65	122 21.765 W	43 23.692 N	Dust Abatement t-2/3 approved
DP-66	122 22.885 W	43 22.572 N	Dust Abatement t-2/3 approved
DP-70	122 16.983 W	43 25.132 N	t-1/2/3 approved
DP-71	122 14.995 W	43 24.095 N	Dust Abatement t-2/3 spot+ vehicles cleared in advance of use
H-10	122 25.402 W	43 23.015 N	
Thermo-gel Plant	122 17.113 W	43 22.355 N	
H-21	122 16.350 W	43 22.203 N	
H1	122 22.509 W	43 24.795 N	
H2	122 22.054 W	43 23.908 N	
Oakridge Airport	122 30.303 W	43 45.210 N	
Cmd 7	122 22.029 W	43 32.599 N	
Cmd 8	122 13.332 W	43 25.603 N	



- Road blocked
- Alternate\_route\_5852
- Airstrip or Airport
- Camp
- Drop Point
- Helispot
- Incident Command Post
- Lookout
- Repeater
- Spot Fire
- Water Source
- Division
- Road closure
- roads
- Primary Roads



A Date: 08/23/17  
 2042 Hours