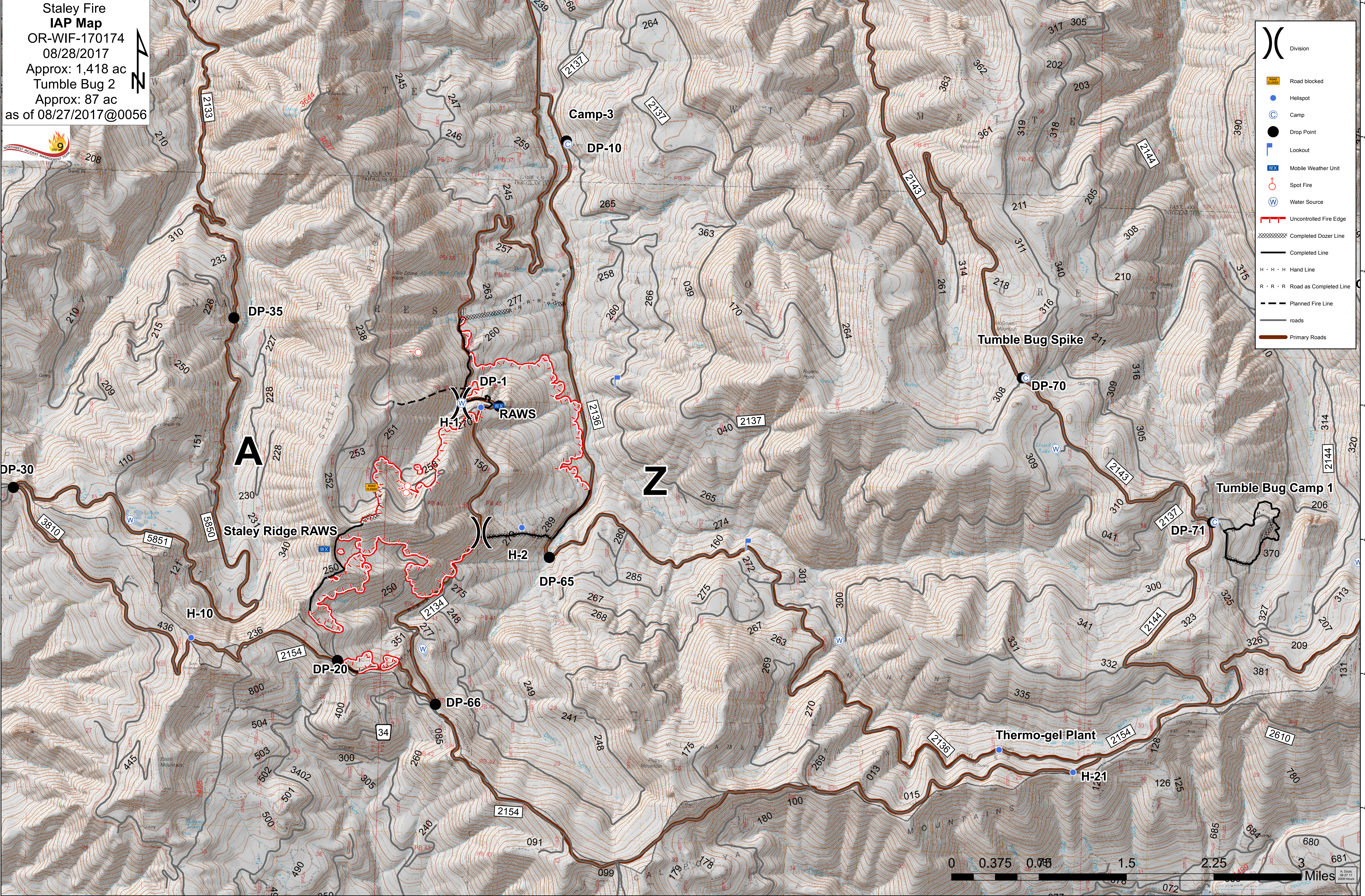


122°27'W 122°26'W 122°25'W 122°24'W 122°23'W 122°22'W 122°21'W 122°20'W 122°19'W 122°18'W 122°17'W 122°16'W 122°15'W 122°14'W

**Staley Fire
IAP Map**
OR-WIF-170174
08/28/2017
Approx: 1,418 ac
Tumble Bug 2
Approx: 87 ac
as of 08/27/2017@0056



- Division
- Road blocked
- Helispot
- Camp
- Drop Point
- Lookout
- Mobile Weather Unit
- Spot Fire
- Water Source
- Uncontrolled Fire Edge
- Completed Dozer Line
- Completed Line
- H · H · H Hand Line
- R · R · R Road as Completed Line
- Planned Fire Line
- roads
- Primary Roads



122°27'W 122°26'W 122°25'W 122°24'W 122°23'W 122°22'W 122°21'W 122°20'W 122°19'W 122°18'W 122°17'W 122°16'W 122°15'W 122°14'W