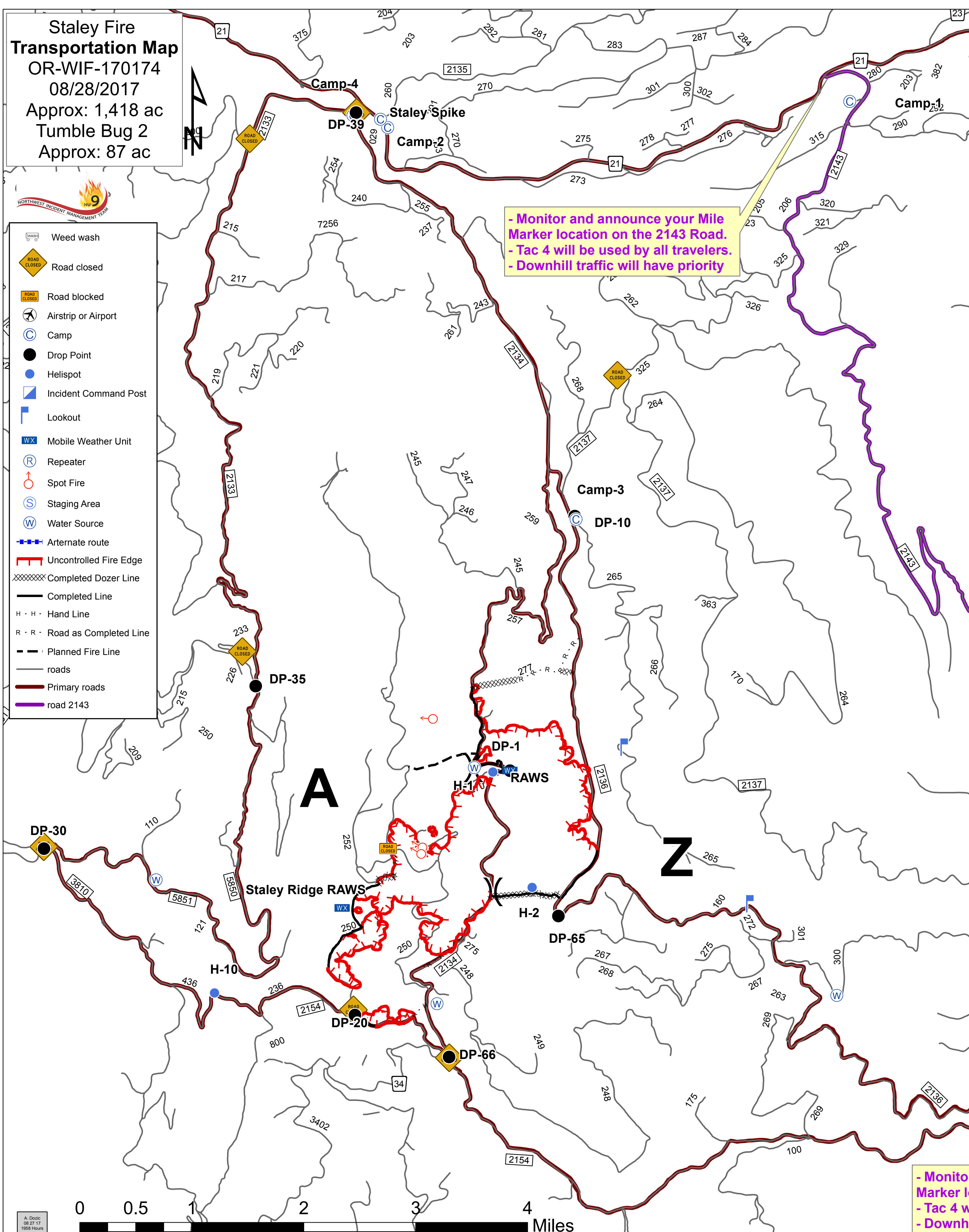


**Staley Fire
Transportation Map**
OR-WIF-170174
08/28/2017
Approx: 1,418 ac
Tumble Bug 2
Approx: 87 ac



- Weed wash
- Road closed
- Road blocked
- Airstrip or Airport
- Camp
- Drop Point
- Helispot
- Incident Command Post
- Lookout
- Mobile Weather Unit
- Repeater
- Spot Fire
- Staging Area
- Water Source
- Alternate route
- Uncontrolled Fire Edge
- Completed Dozer Line
- Completed Line
- Hand Line
- Road as Completed Line
- Planned Fire Line
- roads
- Primary roads
- road 2143



- Monitor and announce your Mile Marker location on the 2143 Road.
 - Tac 4 will be used by all travelers.
 - Downhill traffic will have priority

- Monitor and announce your Mile Marker location on the 2143 Road.
 - Tac 4 will be used by all travelers.
 - Downhill traffic will have priority

