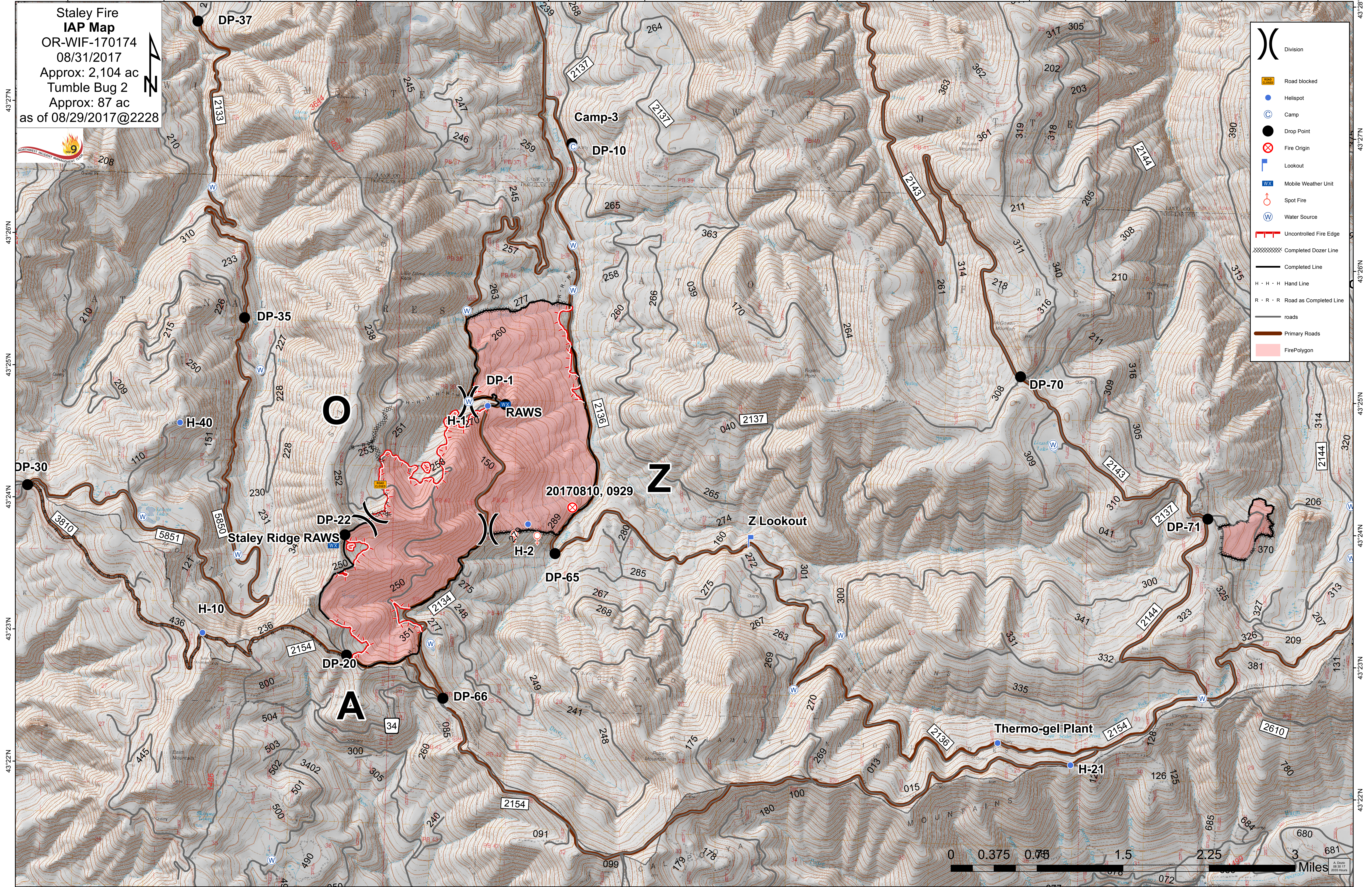
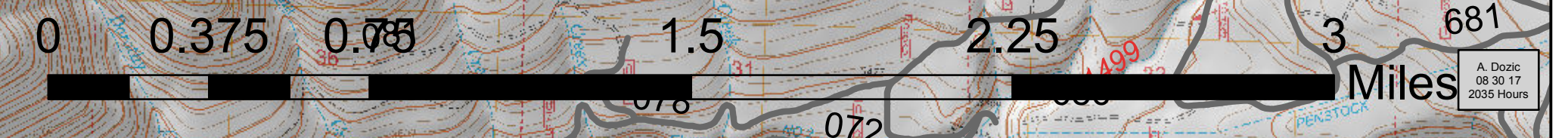


122°27'W 122°26'W 122°25'W 122°24'W 122°23'W 122°22'W 122°21'W 122°20'W 122°19'W 122°18'W 122°17'W 122°16'W 122°15'W 122°14'W

**Staley Fire  
IAP Map**  
OR-WIF-170174  
08/31/2017  
Approx: 2,104 ac  
Tumble Bug 2  
Approx: 87 ac  
as of 08/29/2017@2228



- ( ) Division
- Road blocked
- Helispot
- Camp
- Drop Point
- Fire Origin
- Lookout
- Mobile Weather Unit
- Spot Fire
- Water Source
- Uncontrolled Fire Edge
- Completed Dozer Line
- Completed Line
- H · H · H Hand Line
- R · R · R Road as Completed Line
- roads
- Primary Roads
- FirePolygon



122°27'W 122°26'W 122°25'W 122°24'W 122°23'W 122°22'W 122°21'W 122°20'W 122°19'W 122°18'W 122°17'W 122°16'W 122°15'W 122°14'W