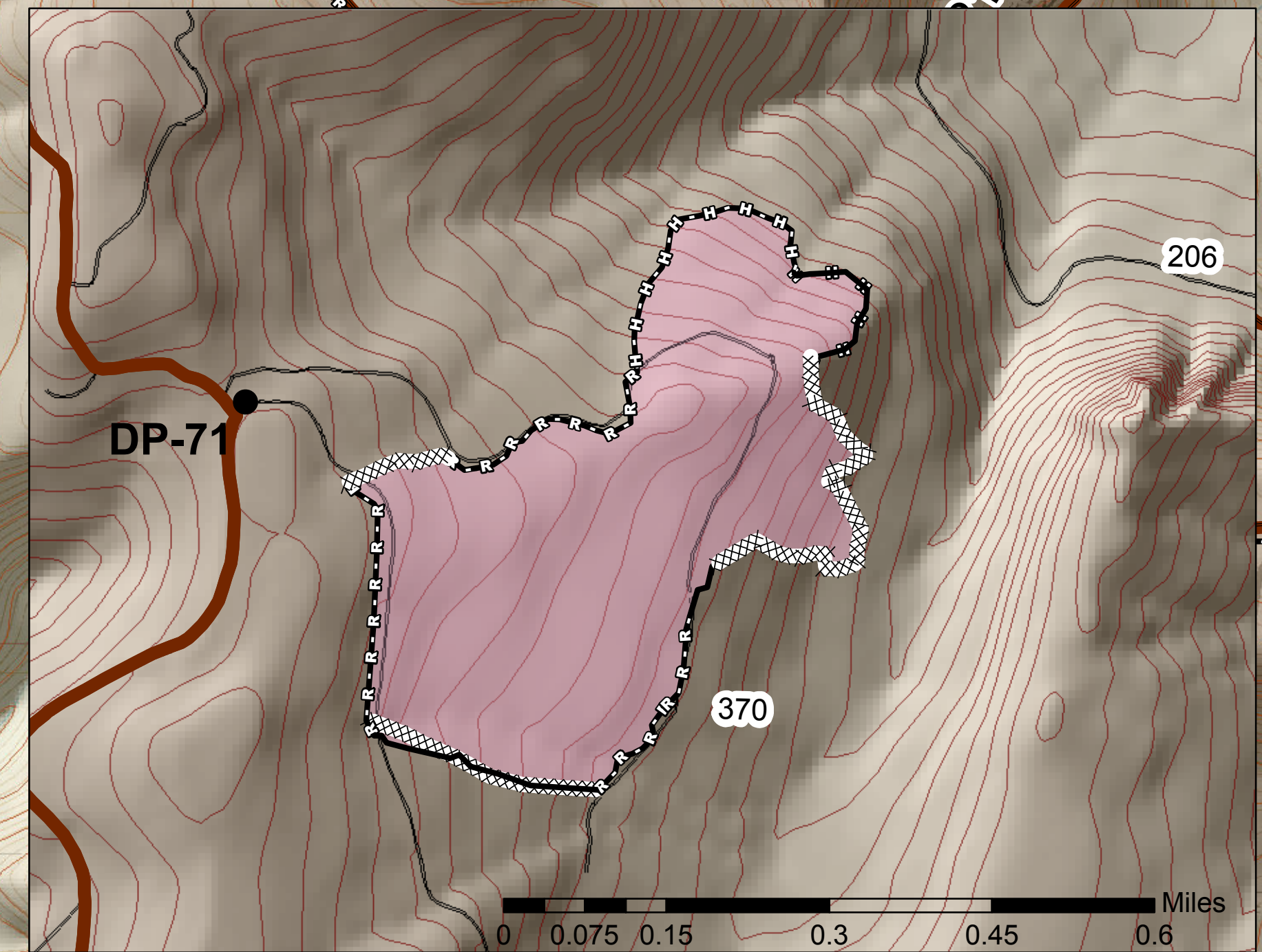
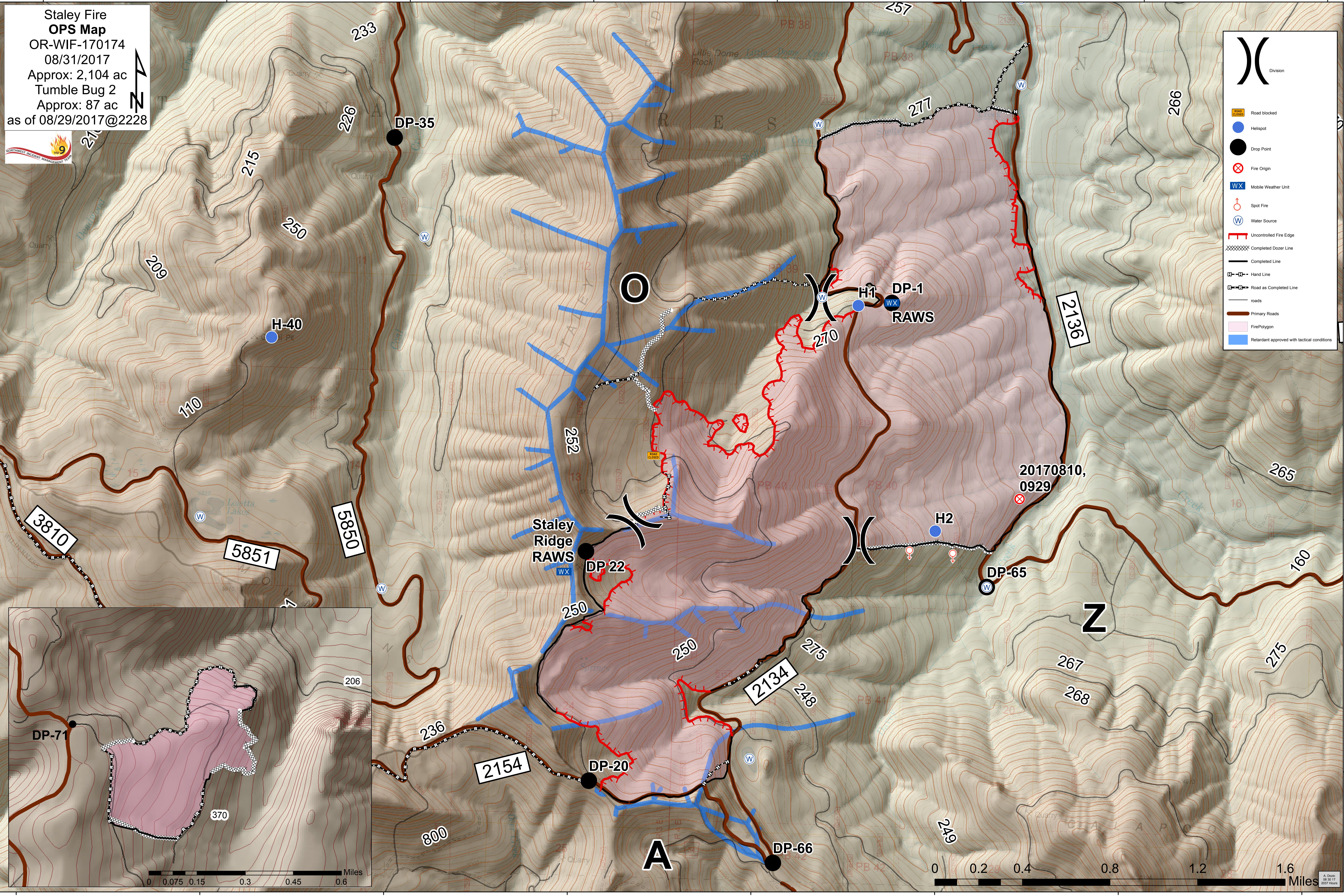


Staley Fire
OPS Map
 OR-WIF-170174
 08/31/2017
 Approx: 2,104 ac
 Tumble Bug 2
 Approx: 87 ac
 as of 08/29/2017@2228



- Division
- Road blocked
- Helispot
- Drop Point
- Fire Origin
- Mobile Weather Unit
- Spot Fire
- Water Source
- Uncontrolled Fire Edge
- Completed Dozer Line
- Completed Line
- Hand Line
- Road as Completed Line
- roads
- Primary Roads
- Fire Polygon
- Retardant approved with tactical conditions



122°27'W 122°26'W 122°25'W 122°24'W 122°23'W 122°22'W 122°21'W 122°20'W

43°23'N 43°24'N 43°25'N 43°26'N