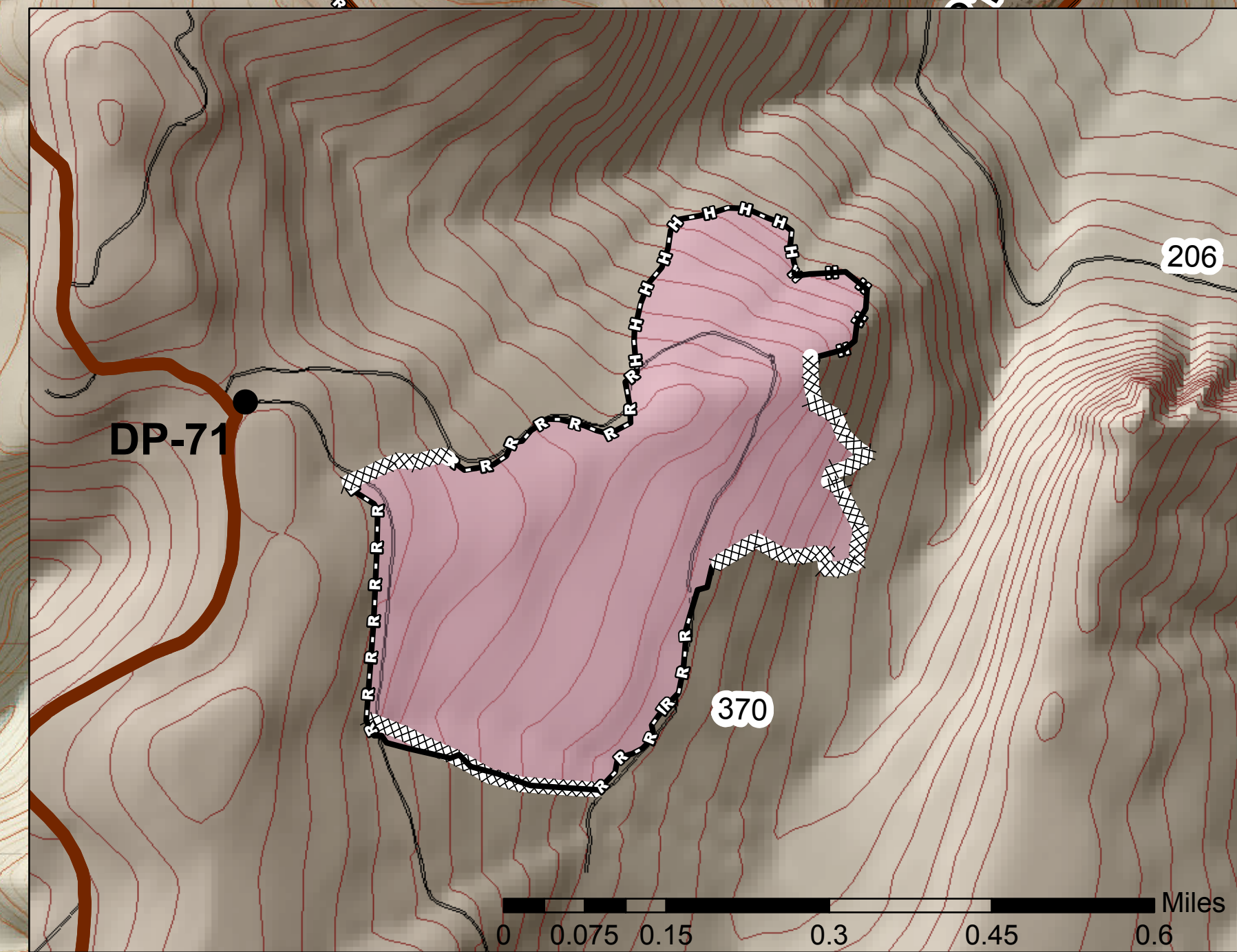


Staley Fire
OPS Map
 OR-WIF-170174
 09/01/2017
 Approx: 2,153 ac
 Tumble Bug 2
 Approx: 87 ac
 as of 08/30/2017@2353



| | |
|--|---|
| | Division |
| | Road blocked |
| | Helispot |
| | Drop Point |
| | Fire Origin |
| | Mobile Weather Unit |
| | Water Source |
| | Uncontrolled Fire Edge |
| | Completed Dozer Line |
| | Completed Line |
| | Hand Line |
| | Road as Completed Line |
| | roads |
| | Primary Roads |
| | Fire Polygon |
| | Retardant approved with tactical conditions |



0 0.075 0.15 0.3 0.45 0.6 Miles

0 0.2 0.4 0.8 1.2 1.6 Miles

